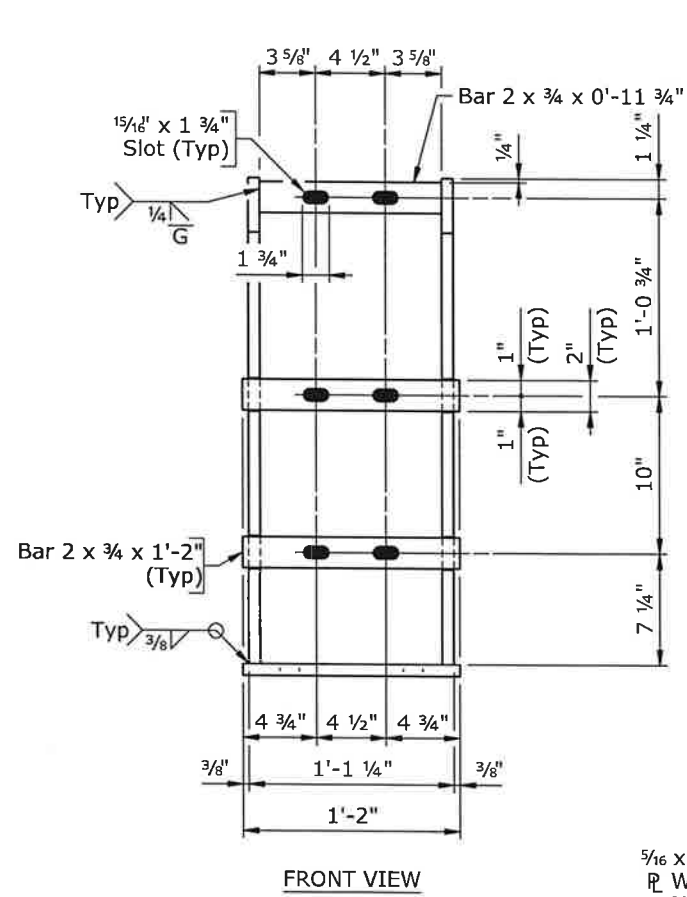
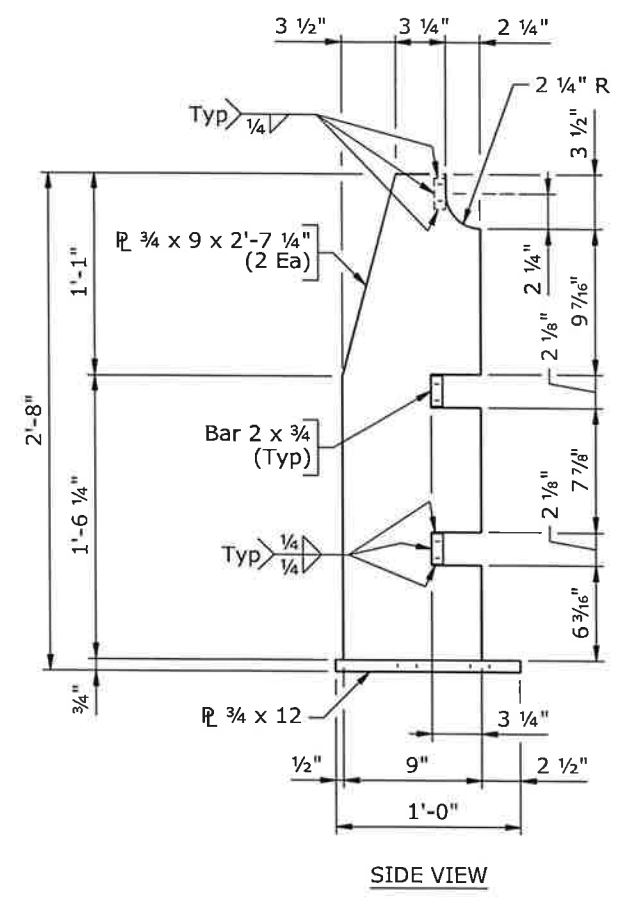
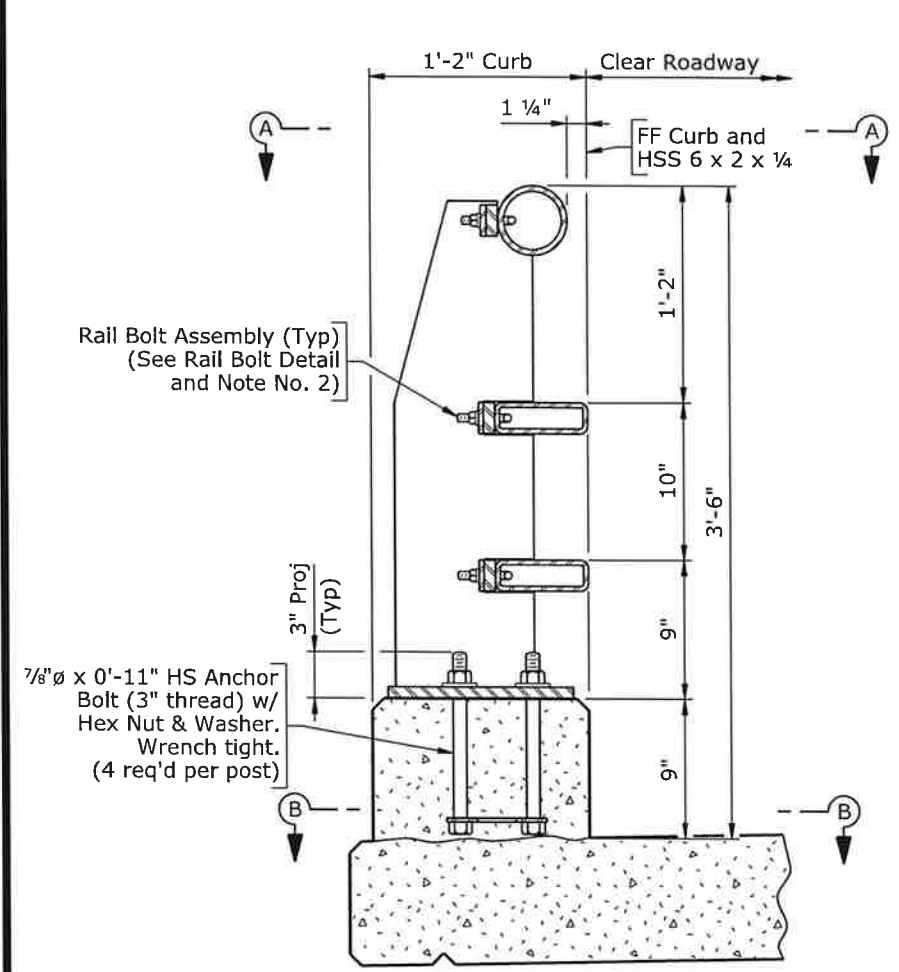


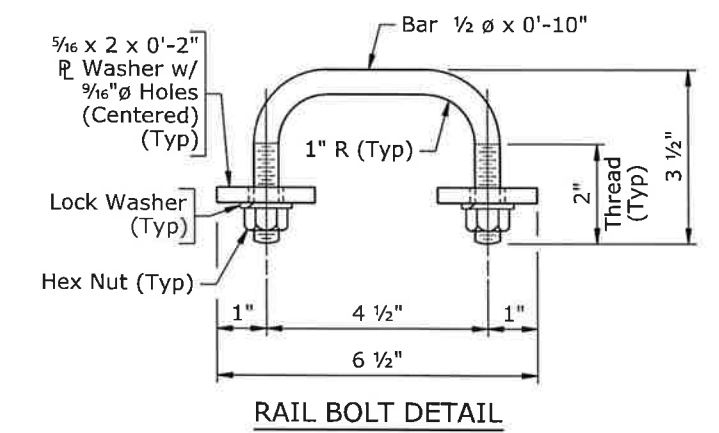
PLAN
 (X posts req'd on bridge)
 (X posts req'd on approach slabs)

Note: Ensure a splice is located in the railing panel which passes over rear face abutment as indicated on the plan.

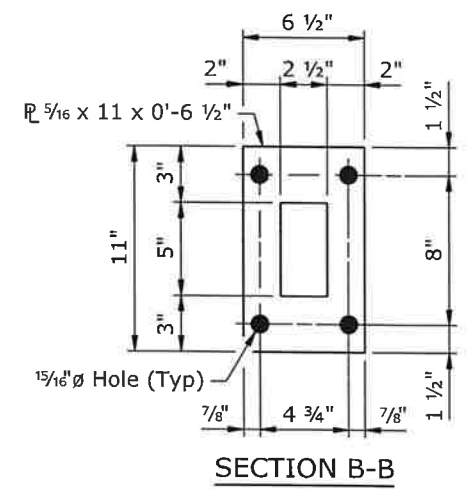
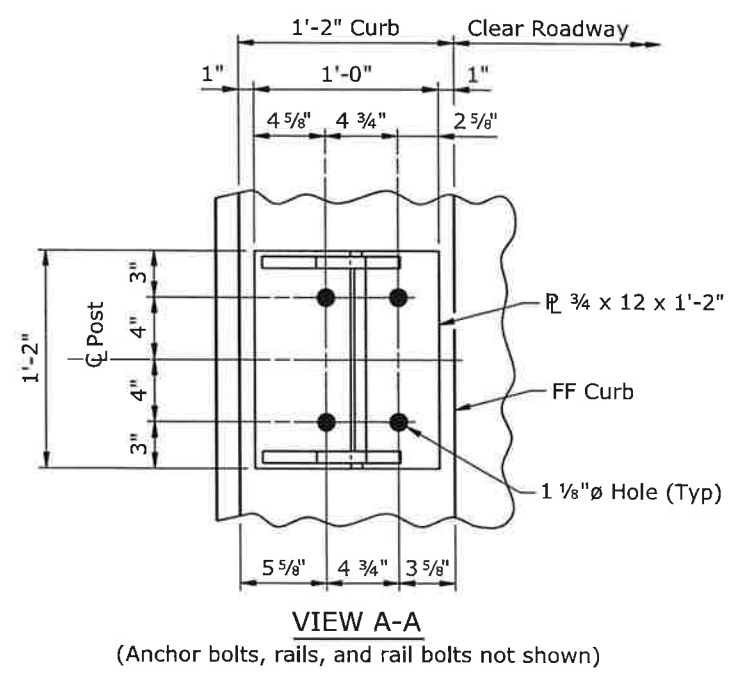
WYOMING DEPARTMENT OF TRANSPORTATION BRIDGE PROGRAM			
REVISIONS	BRIDGE RAILING DETAILS		
	TL4BRGRAIL_MASH_br1.dgn		
REVIEW _____	DESIGN _____	Design Section	X
APPROVAL _____	DETAIL X ✓ X	Drwg No. X	Sheet X of X
	QTY'S X ✓ X		



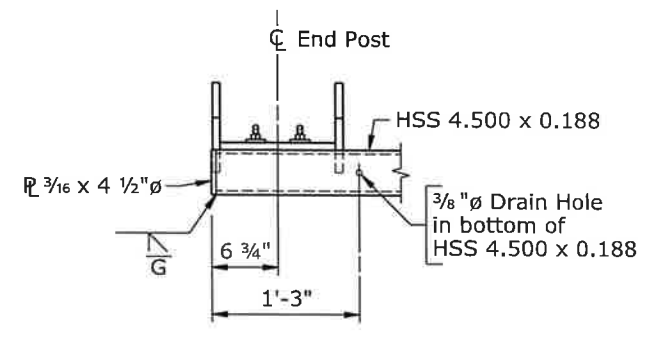
POST DETAILS
 (See View A-A for anchor bolt hole spacing)



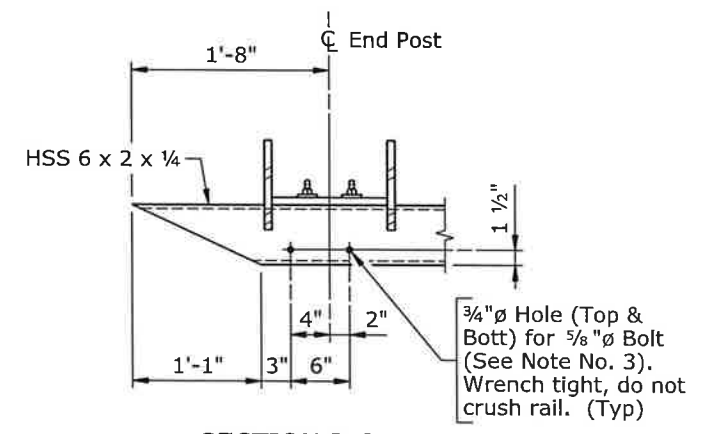
- Note:
- 1) Anchor bolts may be tack welded to lower anchorage (Shop or field).
 - 2) At post locations, drill two 1 1/16" ø holes in each rail to receive rail bolts (Shop or field). See Post Details for hole spacing.
 - 3) Paint surfaces of the railing components that have been cut, drilled, or otherwise damaged with two coats of zinc-rich paint conforming to ASTM A 780.
 - 4) After installing rails, paint all exposed bolt threads with two coats of zinc-rich paint conforming to ASTM A 780.



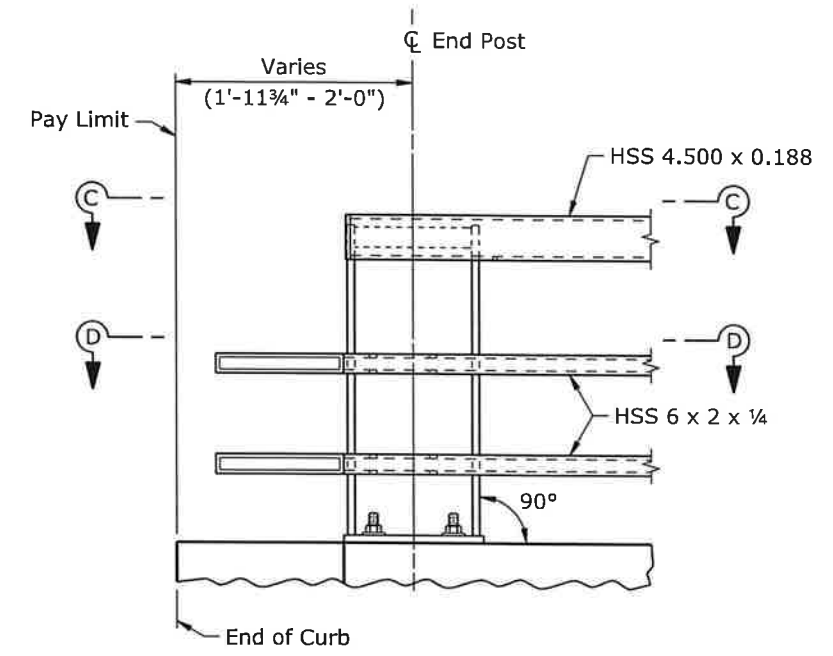
WYOMING DEPARTMENT OF TRANSPORTATION BRIDGE PROGRAM			
BRIDGE RAILING DETAILS			
TL4BRGRAIL_MASH_br2.dgn			
REVISIONS		DESIGN	Design Section X
		DETAIL	X ✓ X
		QTY'S	X ✓ X
REVIEW		APPROVAL	Drwg No. X Sheet X of X



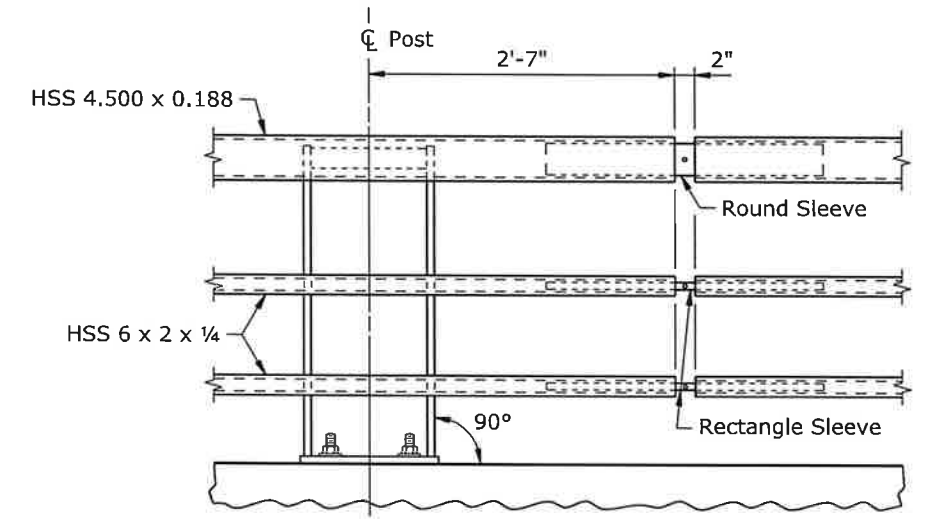
VIEW C-C
 (Curb and post base plate not shown)



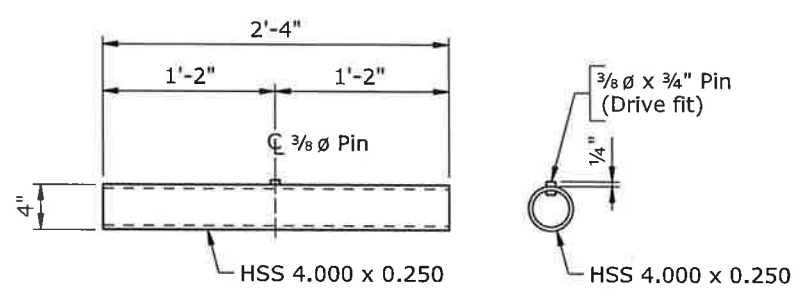
SECTION D-D
 (Typical at each HSS 6 x 2 x 1/4)
 (Curb and post base plate not shown)



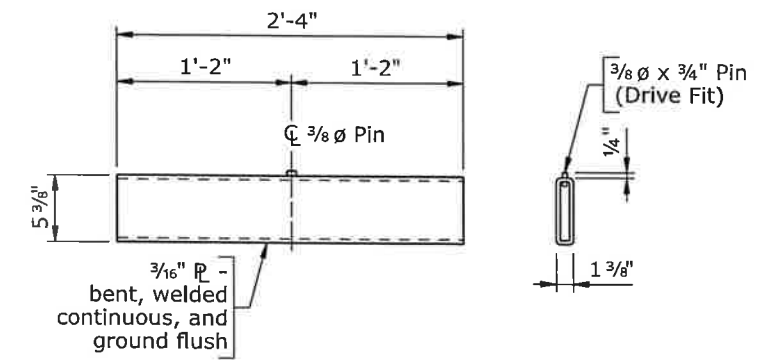
ELEVATION AT TERMINAL



SPLICE DETAIL



ROUND SLEEVE DETAILS



RECTANGLE SLEEVE DETAILS

- Note:**
- 1) Ensure each rail length is continuous over a minimum of two posts, but no more than four posts.
 - 2) Splices may be located on either side of post.
 - 3) Installation of box beam guardrail will require other fabricated assemblies to be connected to the end post. See road plans for details and pay item.

WYOMING DEPARTMENT OF TRANSPORTATION BRIDGE PROGRAM			
BRIDGE RAILING DETAILS			
TL4BRGRAIL_MASH_br3.dgn			
REVISIONS		DESIGN	Design Section X
		DETAIL	Drwg No. X Sheet X of X
		QTY'S	
REVIEW			
APPROVAL			