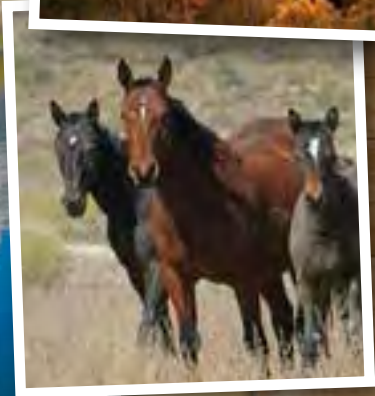


# Wyoming Road Trip

WESTERN HERITAGE ALONG OUR SCENIC BYWAYS



*Wyoming*

*forever west.*

WYOMINGTOURISM.ORG ~ 800-225-5996





Wyoming's scenic byways offer the visitor a spectacular choice of routes. Views range from snow-capped peaks and alpine plateaus to wide grassland vistas. Many Wyoming roads wind through beautiful National Forests and each scenic byway passes through an area with its own unique beauty and history so don't forget to stop the car, get out and explore a little further. Wyoming's fresh air, wildflowers, and mountain pines are best experienced up close and personal.

### NORTHWEST

1. Beartooth Scenic Byway (B,1) . . . . . 2-3
2. Chief Joseph Scenic Byway (C,1) . . . . . 4-5
3. Buffalo Bill Cody Scenic Byway (C,2) . . . . . 6-7
4. Wind River Canyon Scenic Byway (D,4) . . . . . 8-10
5. Wyoming Centennial Scenic Byway (B,4) . . . . . 11-13
6. Red Gulch/Alkali Scenic Backway (D,4) . . . . . 14-15
7. Big Horn Scenic Byway (F,2) . . . . . 16-17
8. Medicine Wheel Passage (E,1) . . . . . 18-19

### SOUTHWEST

9. Big Spring Scenic Backway (A,7) . . . . . 20-21
10. Mirror Lake Scenic Byway (A,9) . . . . . 22-23
11. Muddy Creek Historic Backway  
Bridger Valley Historic Byway (B,9) . . . . . 24-25
12. Flaming Gorge/Green River Scenic Byway (D,9) . . . . . 26-27

### SOUTHEAST

13. Seminoe-Alcova Backway (F,7) . . . . . 28-29
14. Battle Pass Scenic Byway (F,9) . . . . . 30-31
15. Snowy Range Scenic Byway (G,9) . . . . . 32-33
16. Oregon Trail Historic Byway (J,7) . . . . . 34-35

### NORTHEAST

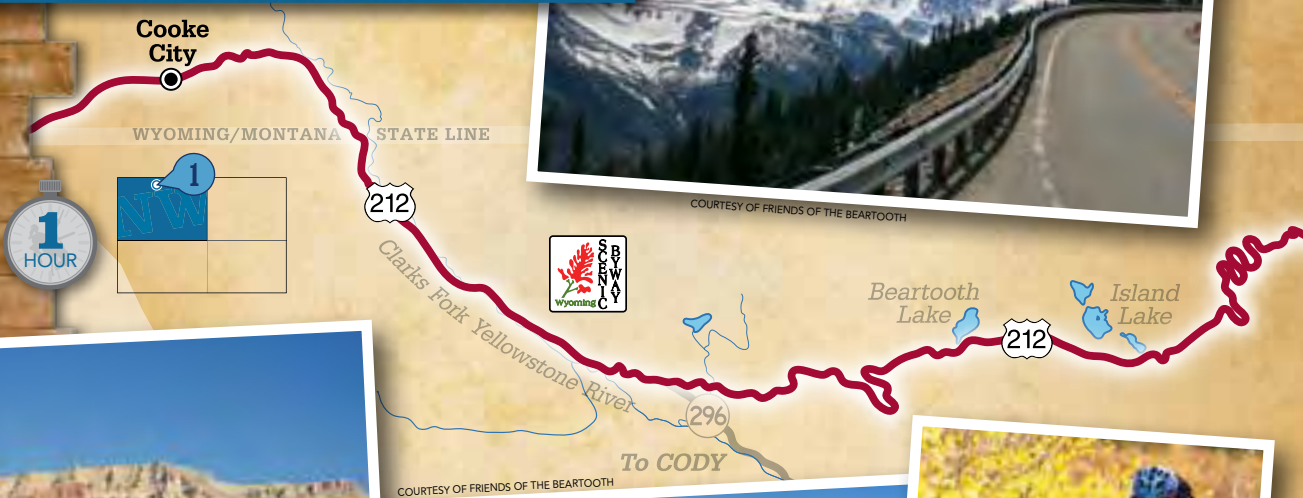
17. South Big Horn/Red Wall Scenic Backway (F,5) . . . . . 36-37
18. Cloud Peak Skyway Scenic Byway (F,2) . . . . . 38-39
19. Wyoming Black Hills Scenic Byway (J,3) . . . . . 40-41

### HISTORIC MINE TRAILS & BYWAYS

20. Black Gold Byway (G,4) . . . . . 42-43
21. Gold Flakes to Yellowcave Historic Mine Trail (D,6) . . . . . 42-43
22. Black Diamond Trail (F,1) . . . . . 42-43
- A Biker's Guide to Wyoming . . . . . 44-45

# Beartooth Scenic Byway

ALL - A M E R I C A N R O A D



COURTESY OF FRIENDS OF THE BEARTOOTH



COURTESY OF RICHARD CUMMINS

YELLOWSTONE  
NATIONAL PARK



COURTESY OF FRIENDS OF THE BEARTOOTH



COURTESY OF TOM MORAN

## BYWAY BASICS

Cresting at 10,947 feet in Beartooth Pass, Beartooth Scenic Byway is Wyoming's highest paved primary road. Winding through **Custer**, **Shoshone**, and **Gallatin National Forests**, drivers will find vast mountain landscapes, massive glaciers, and alpine meadows full of wildflowers, all leading up to the Northeast Entrance of **Yellowstone National Park**.

The Beartooth Scenic Byway is accessible from the south via the Chief Joseph Scenic Byway (State Hwy. 120). The Wyoming section is 47 miles in length and requires a minimum drive time of 1 hour. The Beartooth is closed to automobiles in the winter.



## HISTORY

Opened in 1936, **Beartooth Scenic Byway** roughly follows the old Sheridan Trail, laid out in 1882 by Yellowstone protectionist Gen. Phil Sheridan. The traveling CBS journalist Charles Kuralt once called this stretch of road “the most beautiful drive in America,” and once you’ve driven it you’ll understand why. The only **All American Road** in Wyoming, this two-lane route was the first and only road to be constructed under the Park Approaches Act of 1931, and is currently in the nomination stage for inclusion in the National Register of Historic Places. The Beartooth marked its 75th anniversary in June 14, 2011, and the scenery is as gorgeous as ever.

To Red  
Lodge



COURTESY OF FRED PFLUGHOF

## ALONG THE WAY

Coming up from the south, you’ll hit the route almost dead center. And while you may be tempted to turn west and head immediately for Yellowstone, don’t cheat yourself out of some of the most spectacular panoramas in the US. Just a few miles east and you’ll come to **Clay Butte Lookout**. A four-mile side trip over a dirt road (not recommended for RVs or towed vehicles) and a mile hike upwards, and you’ll find a 360 degree view of dozens of mountain peaks. In the summer months you can step inside the lookout tower for a talk with Forest Service volunteers and exhibits of the 1988 Yellowstone wildfires.

From there a winding drive east will bring you to the literal high point of the drive – **Beartooth Pass**. The scenery is spectacular, but take any light-headedness seriously. Nearly 11,000 feet of elevation makes altitude sickness a real concern.

At this point you can double back to the National Parks or you can head east, winding down a series of switchbacks to the historic mining town of Red Lodge, Montana. Drop by Beartooth Bike Tours for an unforgettable experience. The company will shuttle you up to the top of the Beartooth and let you glide back down the 4,000 foot descent – no pedaling required!

## WHEN YOU GO

### National Forests

[www.fs.fed.us](http://www.fs.fed.us)

Custer (406) 657-6200

Shoshone (307) 527-6241

Gallatin (406) 587-6701

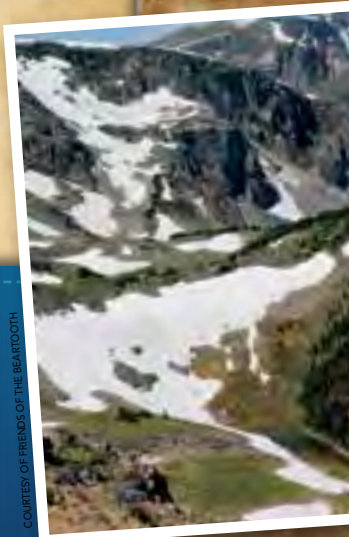
### Yellowstone National Park

(307) 344-7381 | [www.nps.gov/yell](http://www.nps.gov/yell)

### Beartooth Bike Tours

(406) 426-0787 | [www.beartoothbiketours.com](http://www.beartoothbiketours.com)

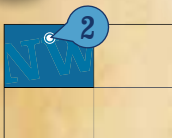
COURTESY OF FRIENDS OF THE BEARTOOTH



FOREST SERVICE



# Chief Joseph Scenic Byway



WYOMING OFFICE OF TOURISM



WYOMING OFFICE OF TOURISM



COURTESY OF THE WAGNER PERSPECTIVE

## BYWAY BASICS

The Chief Joseph Scenic Byway, Wyoming 296, links the town of Cody with the Beartooth Highway and the Northeast Gate of **Yellowstone National Park**. The route crosses the **Shoshone National Forest** through the Absaroka Mountains to the Clarks Fork Valley. The 47 paved miles of the Scenic Byway run from the junction with U.S. 120, 17 miles north of Cody, northwest to their connection with U.S. 212, the Beartooth Highway. The Beartooth Mountains and the Clarks Fork of the Yellowstone River lie to the north of the road, and the Absaroka Mountains and North Absaroka Wilderness are to the south.

The most predictable times to drive this highway are during the fall and summer. During the winter months snow plows keep the roadway open to just east of the entrance to Yellowstone National Park. Allow one hour minimum driving time over this stretch of Byway.



COURTESY OF EGRET COMMUNICATIONS



To CODY  
14 miles





WYOMING OFFICE OF TOURISM

## HISTORY

The Chief Joseph Scenic Byway is named after the Native American chief of the **Nez Perce Tribe**. Following the Battle of the Big Hole in Idaho in 1877, Chief Joseph and 1,000 members of his tribe fled east through Yellowstone. The Nez Perce were trying to escape into Canada (a 1,800 mile trek), but surrendered after the six-day Battle of the Bear Paw in northeastern Montana. They were only 30 miles from the Canadian border.

In his speech of surrender, Chief Joseph expressed dignity and defeat with his famous words, 'Hear me, my chiefs, I am tired; my heart is sick and sad. From where the sun now stands, I will fight no more forever.' The Nez Perce tribe was forced onto reservations in Oklahoma and Washington despite promises to allow them back on their lands. Yellowstone's Nez Perce Creek is named for this valiant attempt at freedom.

COURTESY OF JIM STEELE@HEARTMOUNTAINVINTAGE.NET



WYOMING OFFICE OF TOURISM

## HEART MOUNTAIN

About 45 minutes east of the byway you'll find northwest Wyoming's newest cultural attraction. Heart Mountain Relocation Center is dedicated to the often-overlooked WWII history of Japanese internment camps in the area. The Interpretive Learning Center at Heart Mountain educates visitors about the history leading up to the massive relocation, life at the camp and how those events are still relevant in today's world. The brand new 11,000-square-foot facility opened in August of 2011, and is designed to mimic the original WWII-era barracks buildings that made up the camp.

120



COURTESY OF THE WAGNER PERSPECTIVE

## WHEN YOU GO

**Yellowstone National Park**  
(307) 344-7381 | [www.nps.gov/yell](http://www.nps.gov/yell)

**Shoshone National Forests**  
(307) 527-6241 | [www.fs.fed.us](http://www.fs.fed.us)

**Nez Perce Tribe**  
[www.nezperce.org](http://www.nezperce.org)

**Heart Mountain Relocation Center**  
(307) 754-2689 | [www.heartmountain.org](http://www.heartmountain.org)

# Buffalo Bill Cody Scenic Byway

COURTESY OF EGRET COMMUNICATIONS



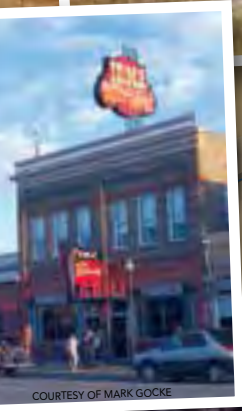
COURTESY OF MARK GOCKE

## BYWAY BASICS

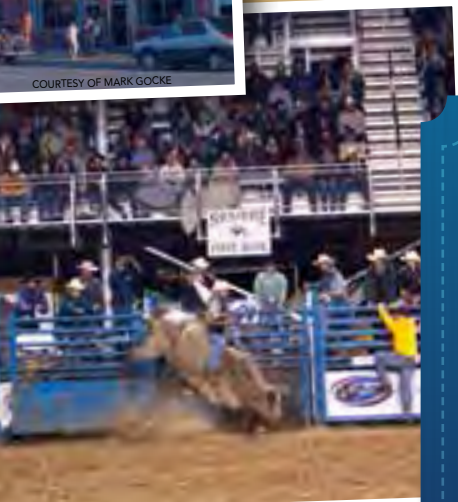
The Buffalo Bill Cody Scenic Byway, U.S. 14/16/20, follows the North Fork of the Shoshone River through scenic Wapiti Valley to the East Entrance of Yellowstone National Park. The 27 miles of paved Scenic Byway starts about 25 miles west of Cody at the Shoshone National Forest border. Normal driving time from the forest boundary to the Park is approximately 45 minutes. The byway is open to traffic year round, but the East Entrance into Yellowstone closes the first Monday of November, opening again (weather permitting) in early May.

YELLOWSTONE  
NATIONAL PARK

North Fork Shoshone River



COURTESY OF MARK GOCKE



COURTESY OF MARK GOCKE

## IN TOWN

A gateway community to Yellowstone National Park, Buffalo Bill's namesake town of Cody Wyoming has plenty to offer. Visit the **Cody Nite Rodeo** and see why they call this town the "Rodeo Capital of the World." Or if you prefer your beef on a plate rather than in a stadium, dine at the Historic **Irma Hotel**. Have a drink at their famous cherry wood bar—a gift from Queen Victoria to Irma owner Buffalo Bill—or watch the **Cody Gunfighters** perform live outside. Stop over at **Old Trail Town** for some life-sized history. The site is home to authentic western objects and architecture, including a Hole in The Wall Gang cabin, countless pioneer and Indian artifacts, and final resting place to the real life Jeremiah Johnson. The **Buffalo Bill Historical Center** is a must-see. With five world-class museums under one roof, it's no wonder they call it the "Smithsonian of the West."





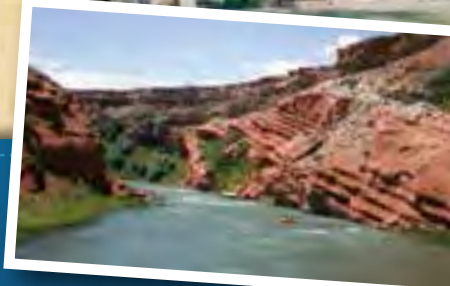
## ALONG THE WAY

Heading west from Cody, your first stop is **Buffalo Bill Dam**. Prototype for the world-famous Hoover Dam, this massive concrete wall boasts a structural height of 350 ft., its own visitor center, and a breathtaking walk along the top. From there it's a gorgeous drive through **Buffalo Bill State Park** into the Wapiti Valley and the byway proper, a geologist's dream and the country that Teddy Roosevelt once called "the most scenic 50 miles in the world." Take a break and refuel at **Pahaska Teepee**, Buffalo Bill's original hunting lodge. You can overnight at one of the cabins, grab a bite in the Lodgepole Room, or simply watch the local wildlife. If you're a hiker, find the Pahaska-Sunlight Trail and head to "Camp Monaco" where Buffalo Bill hosted Prince Albert of Monaco during a hunting trip in 1913. The trail is approximately 18 miles long and is moderately difficult. From Pahaska the byway ends in spectacular fashion at Sylvan Pass (el. 8530 ft./2600 m.) with a sweeping mountain view and the East Entrance to the world's first national park, **Yellowstone**.

WYOMING OFFICE OF TOURISM



WYOMING OFFICE OF TOURISM



WYOMING OFFICE OF TOURISM



COURTESY OF FEDERAL HIGHWAY ADMINISTRATION - WESTERN FEDERAL LANDS HIGHWAY DIVISION

## WHEN YOU GO

**Cody Nite Rodeo**  
(800) 207-0744

**Irma Hotel**  
(307) 587-4221 | [www.irmahotel.com](http://www.irmahotel.com)

**The Cody Gunfighters**  
(307) 587-4221 | [www.codygunfighters.com](http://www.codygunfighters.com)

**Old Trail Town**  
(307) 868-2111 | [www.museumoftheoldwest.org](http://www.museumoftheoldwest.org)

**Buffalo Bill Historical Center**  
(307) 587-4771 | [www.bbhc.org](http://www.bbhc.org)

**Buffalo Bill Dam**  
(307) 527-6076 | [www.bbdvc.org](http://www.bbdvc.org)

**Buffalo Bill State Park**  
(307) 587-9227 | [wyoparks.state.wy.us](http://wyoparks.state.wy.us)

**Yellowstone National Park**  
(307) 344-7381 | [www.nps.gov/yell](http://www.nps.gov/yell)

**Pahaska Teepee**  
(307) 527-7701 | [www.pahaska.com](http://www.pahaska.com)

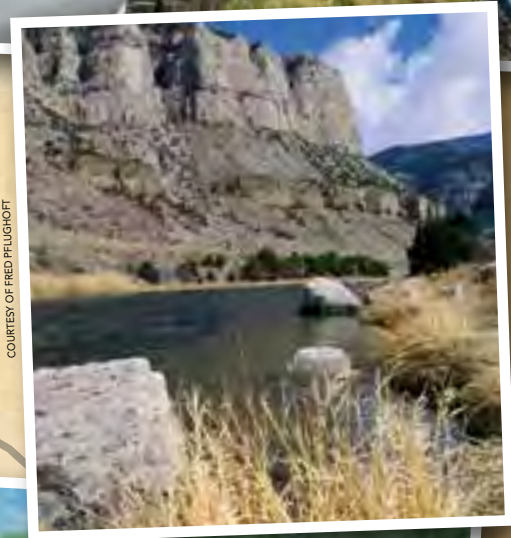


COURTESY OF FRED PELLIUCCI

# Wind River Canyon Scenic Byway



COURTESY OF WIND RIVER CANYON WHITEWATER



COURTESY OF FRED PELGHOTT

Thermopolis

Shoshoni

## BYWAY BASICS

The Wind River Canyon Scenic Byway begins in the town of Shoshoni at milepost 100. Following U.S. 20 north through Wind River Canyon and the Wind River Indian Reservation, the route ends just north of the City of Thermopolis at milepost 134. Without stopping, the total drive time is about 40 minutes.



COURTESY OF JIM GONES



## ALONG THE WAY

As you travel north from Shoshoni into **Boysen State Park**, you come face to face with the windswept west. You can see the bare yellow and red rock of the Owl Creek Mountains stretching off to forever, and the deep blue of Boysen Reservoir rippling in contrast. You might even think, with the water skiing and swimming and the walleye and trout fisheries, that you've come to the high point of the Byway. But then you drive into Wind River Canyon. Spectacular rock walls rise 2,500 vertical feet on either side to the ridge tops. You can crane your neck and see some of the oldest rock formations in the world, dating back to the Precambrian period, (more than 2.9 billion years ago) visible right from the highway, their black and pink cliffs protruding to the sky. The geology of every layer is marked by interpretive signage, making the drive a geology lesson and a trip through time.

The Wind River itself flows north through the canyon. **Wind River Canyon Whitewater & Fly Fishing Outfitter**, a Native American-owned business, is the only outfitter permitted to raft/fish in the Indian Reservation portion of the canyon. With fallen rocks and boulders jutting from the riverbed, the unique water hydraulics make for some spectacular white water indeed.

Right as it leaves the canyon, the river changes names. At the "Wedding of the Waters," the Wind River becomes the Bighorn River, named for the mountain sheep indigenous to the area. Keep an eye out for these woolly cliff dwellers as you drive. In 1995, 43 bighorns were "transplanted" along the canyon rim. After making the trip from Dubois, WY in horse trailers, the sheep were then loaded onto flatcars by Burlington-Northern Railroad before traveling the final 7 miles by railroad. They were then released in the canyon, bolstering today's population to an estimated 100 sheep in Wind River Canyon.

WYOMING OFFICE OF TOURISM



WYOMING OFFICE OF TOURISM



COURTESY OF PETE SALOJITOS



## WIND RIVER INDIAN RESERVATION

Home to two Indian nations, the Eastern Shoshone and Northern Arapaho, the Wind River Indian Reservation reaches 70 miles east to west and 55 miles north to south. It spreads over 2.2 million acres from Thermopolis on the northeast, to Shoshoni on the east, Lander on the south, and Dubois on the west. The population of the reservation includes 4,500 Arapaho and 2,500 Shoshone.

The reservation was established by the Fort Bridger Treaty of July 2, 1863. The original treaty included sections of Colorado, Utah, Idaho, Montana and Wyoming. On July 3, 1868, a second treaty was signed which established the reservation on the present location.

There are a dozen powwows and all-Indian rodeos held throughout the summer months in the towns of Arapahoe, Crowheart, Ethete and Fort Washakie. Cultural program schedules can be obtained from the area Chambers of Commerce and the local tribal cultural centers. Visitors are welcome to attend most non-religious events on the reservation.

# Wind River Canyon Scenic Byway

## THERMOPOLIS

The Byway ends just north of **Thermopolis**, home of the world's largest mineral hot springs in Hot Springs State Park. Needless to say, this town is worth a stop. Here you can enjoy hot springs facilities, cooling ponds, a swinging foot bridge across the Big Horn River, hiking paths and a chance to see wild buffalo.

Buffalo aren't the only large wildlife Thermopolis has to offer. **The Wyoming Dinosaur Center**, named the country's #1 dinosaur museum by American's Best and Top Ten, is not a sight to miss. Featuring 30 mounted skeletons, dig site tours, and the only Archaeopteryx specimen on display in North America, this is a roadside stop worth making.



COURTESY OF THE WAGNER PERSPECTIVE

WYOMING OFFICE OF TOURISM



WYOMING OFFICE OF TOURISM



WYOMING OFFICE OF TOURISM



COURTESY OF FRED PELLIUCCI/OTF



## WHEN YOU GO

### Boysen State Park

(307) 876-2796 | [wyoparks.state.wy.us](http://wyoparks.state.wy.us)

### Wind River Canyon Whitewater & Fly Fishing Outfitter

(888) 246-9343 | [www.windrivercanyonraft.com](http://www.windrivercanyonraft.com)

### Hot Springs State Park

(307) 864-2176 | [wyoparks.state.wy.us](http://wyoparks.state.wy.us)

### Wyoming Dinosaur Center

(307) 864-2997 | [www.wyodino.org](http://www.wyodino.org)

### Wind River Country

(800) 645-6233 | [www.wind-river.org](http://www.wind-river.org)



# Wyoming Centennial Scenic Byway

To Yellowstone National Park



COURTESY OF FRED PFLUGHOF



WYOMING OFFICE OF TOURISM

## BYWAY BASICS

The 163 miles between Pinedale and Dubois comprise the Wyoming Centennial Scenic Byway. This horseshoe-shaped combination of highways includes U.S. 26/287 and U.S. 26/89/191. The route crosses diverse landscapes including badlands, ranch land, and the high montane.

The entire route is open year-round and could be driven straight through in about 4 hours. That said, travelers should allow much more time to visit the many museums, art galleries, shopping areas and recreational opportunities, not to mention the unsurpassed scenery.



COURTESY OF FRED PFLUGHOF

# Wyoming Centennial Scenic Byway



COURTESY OF DANIEL MAYER

## END TO END

If you're coming from the North end of the Byway, it's your good fortune to pass through Dubois. You might recognize this sleepy western town from the HBO film "Taking Chance." Based on real-life events, "Taking Chance" tells the story of Lt. Col. Michael Strobl (played by Kevin Bacon), a military escort officer who accompanies the body of Wyoming-born Marine Chance Phelps to his hometown -- Dubois. Slow down and take in some local fauna at the **National Bighorn Sheep Interpretive Center**. You can also take in some fictional wildlife. The "riding jackalope" at the local gas station is always ready for a photo op. From there it's up and over Togwotee Pass (pronounced toe-go-tee), where you'll cross the high point of the byway (along with the continental divide) at 9,658 feet on your way west towards the Tetons.

If you're coming to the Wyoming Centennial from the southern end, you'll find yourself deep in the heart of mountain man country. Stop in and get to know these beaver-pelted trappers at the **Museum of the Mountain Man** outside Pinedale. And if you're feeling up for some adventure, you can follow in their footsteps. Just take a detour north on Highway 352 for approximately 40 miles to the Green River Lakes deep into the Green River Range, a sub range of the Wind Rivers. The last stretch of the winding road into the scenic heart of this spectacular mountain group is unpaved. The reward for a challenging drive is one stunning view after another. The most spectacular features are Squaretop Mountain, Dinwoody Glacier and 13,785-foot Gannet Peak, Wyoming's highest mountain set deep in the Bridger Wilderness. Take in the view, vow to return and backtrack to US 191. A monument just east of Daniel honors Father Pierre De Smet, a notable Jesuit missionary in the 1840s. From there it's another gorgeous drive through historic Hoback Canyon, and into Jackson.



COURTESY OF FRED PELLIUCCI



COURTESY OF FRED PELLIUCCI



COURTESY OF MARK GOCKE

## JACKSON HOLE

Surrounded by mountains in a valley filled with culture and recreation, **Jackson** is the town to visit for Wyoming travelers. Every winter snow coats the valley, creating the perfect place for skiing or other winter recreation. During the summer, many attend the Grand Teton Music Festival, while autumn's Fall Arts Festival plays host to more than 40 local galleries and museums. Or at any time of year, stop off at the **National Museum of Wildlife Art** about two miles north of town. With a collection of wildlife art unparalleled in the US, the museum's 14 galleries of paintings, sculpture, and works on paper allow for many repeat visits. Its position across from the **National Elk Refuge** is also worth noting. In the warmer months the refuge makes for excellent bird watching, while winter visitors can take sleigh rides out amongst the massive herds of migratory elk.



## GRAND TETON AND YELLOWSTONE NATIONAL PARKS

If you vacation in Wyoming, chances are you're heading to a national park. And if you're heading to a national park, chances are you'll drive the Centennial Scenic Byway. Between Jackson and Moran Junction, the byway passes through **Grand Teton National Park**, offering sightseers a westward view of some of the world's most spectacular peaks. Rising straight out of sage-covered flat lands, the Teton Range, crowned by the Grand Teton, remains the dominant feature for 20 miles of road, while the park itself represents a triumph of America's wilderness preservation forces. While in the park, you can visit one of the most photographed spots in the state: **Mormon Row**. This line of historic homestead complexes along Jackson-Moran Road makes for an historic and picturesque side trip.

To reach **Yellowstone National Park** turn west at Moran Junction (leaving the scenic byway, but not the scenery) and drive north 25 miles on U.S. 191 to the South Entrance of Yellowstone. The world's first National Park, Yellowstone offers spectacular scenery and superb wildlife viewing. Herds of bison roam free, white surges of steaming water shoot from geysers, and deep pools of turquoise sit still in hot springs, all within an hour of the Byway.

COURTESY OF MARK GOCKE



WYOMING OFFICE OF TOURISM



### WHEN YOU GO

**National Bighorn Sheep Interpretive Center**  
(888) 209-2795 | [www.bighorn.org](http://www.bighorn.org)

**Museum of the Mountain Man**  
(877) 686-6266 | [www.museumofthemountainman.com](http://www.museumofthemountainman.com)

**Jackson Area Attractions**  
(888) DEEP-SNO | [www.jacksonhole.com](http://www.jacksonhole.com)

**National Museum of Wildlife Art**  
(800) 313-9553 | [www.wildlifeart.org](http://www.wildlifeart.org)

**National Elk Refuge**  
(307) 733-9212 | [www.fws.gov/nationalelkrefuge](http://www.fws.gov/nationalelkrefuge)

**Grand Teton National Park**  
(307) 739-3300 | [www.nps.gov/grte](http://www.nps.gov/grte)

**Mormon Row**  
[www.nps.gov/grte/historyculture/mormon.htm](http://www.nps.gov/grte/historyculture/mormon.htm)

**Yellowstone National Park**  
(307) 344-7381 | [www.nps.gov/yell](http://www.nps.gov/yell)

WYOMING OFFICE OF TOURISM



COURTESY OF FRED PELLUCHOFT



# Red Gulch/Alkali Scenic Backway



WYOMING OFFICE OF TOURISM



## BYWAY BASICS

Drive along Wyoming's Red Gulch/Alkali Scenic Backway when it's open and dry, between May and October, and you'll encounter stunning showcases of area history as well as the colorful geography of the Big Horn Mountains.

A 34-mile route through a mostly untraveled (and unpaved) section of the Big Horn Basin, there are no towns, stores, gas stations or telephones along the way. Take drinking water, food, and a spare tire—the ride can get bumpy.



COURTESY OF THE WAGNER PERSPECTIVE

WYOMING OFFICE OF TOURISM

WYOMING OFFICE OF TOURISM







## THE LAND

Along the Red Gulch Road you can see the red hills of the Chugwater formation, formed 230 million years ago when warm seas covered Wyoming. There are rugged, steep canyons, caves and unique table rocks eroded by water and carved by wind. The route passes the 13,000-foot Big Horn Mountains, still in their geologic teens, formed only 60 million years ago by a period of massive uplifting.



JOSHUA M. SHEETZ

## THE EARLY RESIDENTS

Driving the Backway, you'll traverse country inhabited since the Paleo-Indian mammoth hunters came here 12,000 years ago. You'll see rock cairns, or "shepherd monuments"—piles of rocks built by shepherders in the late 1800s and early 1900s (they served the dual purpose of landmark and pastime for bored shepherders). A short drive to east will take you to the sandstone cliffs of **Medicine Lodge State Archaeological Site**. Situated along the Bighorn Mountains' western slope, Medicine Lodge is known as one of the country's most prominent archaeological sites. Stop and wonder at the prehistoric petroglyphs and pictographs that remain etched on red sandstone cliffs, giving you a canvas of ancient cultures. Of course, along this backway, you'll also see signs of other, far older inhabitants.

Starting at the route's northern end on US Highway 14, make your way south until you reach the **Red Gulch Dinosaur Track Site**, the largest dinosaur track site in Wyoming. Here you can see time-defying footprints left by our hulking reptilian predecessors imprinted in stone. You can actually walk in the footprints and take invertebrate fossils from the mud walls. State paleontologists don't mind—there are millions more buried under the topsoil all around you.



## WHEN YOU GO

**Red Gulch Dinosaur Track Site**

(307) 347-5100 | [www.blm.gov/ny](http://www.blm.gov/ny)

**Medicine Lodge State Archaeological Site**

(307) 469-2234 | [wyoparks.state.wy.us](http://wyoparks.state.wy.us)

# Big Horn Scenic Byway



COURTESY OF FRED PFLUGHOF

To Lovell



Burgess Junction



## BYWAY BASICS

The Bighorn Scenic Byway follows U.S. 14 from the west outside Greybull, and is accessible from the east by exiting Interstate 90 at Ranchester. The road winds up the Bighorn Mountains, meaning visitors can expect plenty of fishing, camping, and hiking opportunities. This drive offers some of the most diverse landscapes in Wyoming, from lush grasslands to alpine meadows, from crystal-clear lakes to glacial carved valleys, and from rolling hills to sheer mountain walls. Total drive time clocks in at about 1 hour.

To Greybull



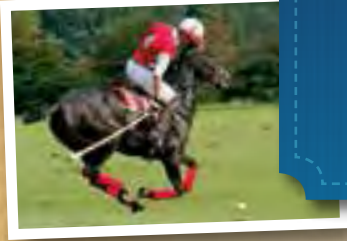
## ALONG THE WAY

Coming from the western side, you'll soon find yourself driving between the steep walls of Shell Canyon. Cut out of solid granite over millions of years by the roaring waters of Shell Creek, this canyon can only be called spectacular. This gray and pink granite is among some of the oldest rock on earth, while the softer Flathead sandstone which rests on top of it, some 550 million years old, contains some of the earliest fossils of hard shelled creatures you can find. Such ancient shells gave Shell Canyon, and Shell Falls, their names. The falls themselves are a truly impressive display of natural forces, tumbling by at 3,600 gallons per second. The trail leading up to the waterfall brings you close, and the thud of falling water resonates from your chest all the way down to the soles of your feet.



To Dayton &  
Ranchester

14



## TWO SMALL TOWNS

Greybull is the best kept secret between the Black Hills and Yellowstone Park, and that's especially true if you arrive in the second week of June. Greybull's Days of '49 Festival is a weekend of rodeos and parades, recalling the town's western heritage, when its namesake albino bison bull roamed the area, a sacred symbol to Native Americans.

For a taste of history set in a quiet park, visit the Connor Battlefield State Historic Site in Ranchester. Here, General P.E. Connor and his troops battled against an Arapaho village in the Battle of Tongue River in 1865. Today, a monument stands at the battlefield, surrounded by a fresh green park. It's a great place to have an afternoon picnic and take in the scenery.

## ONE BIG TOWN

A few miles east of the byway on I-90, Sheridan is one of Wyoming's hidden jewels. Voted the country's #1 Western Town by True West magazine in 2006, Sheridan offers a combination of New West culture and Old West hospitality. Visit **King's Saddlery Inc.**, at once a museum and a one stop shop for working cowboys. Drop by historic sites like the **Bradford Brinton Museum**, **Trail End Mansion**, or **Sheridan Inn**, the "finest hotel between Chicago and San Francisco." And if you're in town during summer, don't miss the **Polo Matches**. One of the top polo locations in North America and the world at large, Sheridan is home to two clubs and nine playing fields for the mallet-wielding equestrians.



COURTESY OF ROSIE BERGER

## WHEN YOU GO

### Big Horn National Forest

(307) 674-2600 | [www.fs.fed.us](http://www.fs.fed.us)

### King's Saddlery Inc.

(800) 443-8919 | [www.kingropes.com](http://www.kingropes.com)

### Trail End State Historic Site

(307) 674-4589 | [www.trailend.org](http://www.trailend.org)

### Sheridan Inn

(307) 674-2178 | [www.sheridaninn.com](http://www.sheridaninn.com)

### Flying H Polo Club

(307) 674-9447 | [www.flyinghpolo.com](http://www.flyinghpolo.com)

### Bradford Brinton Museum

(307) 672-3173 | [www.bradfordbrintonmemorial.com](http://www.bradfordbrintonmemorial.com)

COURTESY OF RAUBO HAUFJE



WYOMING OFFICE OF TOURISM

# Medicine Wheel Passage Scenic Byway



## BYWAY BASICS

Medicine Wheel Passage is reached from the east by exiting Interstate 90 at Ranchester. The byway takes U.S. 14A from the west outside Lovell. Without stops, total drive time is about 45 minutes. Of course, this can vary depending on the interests of the visitor and time of the year. Stopping to enjoy the outstanding scenery, the many points of interest, or adventures such as fishing and camping can extend travel time by several hours or even days. Medicine Wheel Passage west of Burgess Junction is closed in the winter.

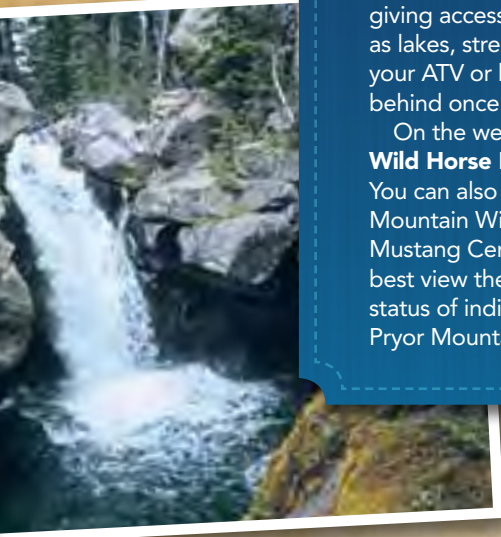
WYOMING OFFICE OF TOURISM



To Dayton & Rancheater

14

WYOMING OFFICE OF TOURISM



## THE NAMESAKE

The Passage was named after the **Medicine Wheel National Historic Landmark** on the slopes of Medicine Mountain. The Medicine Wheel is a sacred, historic site and an archaeological wonder. Researchers believe prehistoric Native Americans constructed the Medicine Wheel over the past 1,000 years. Travelers can still visit the site today, and experience for themselves the calm and tranquility of this spiritual place.

## ALONG THE WAY

Spanning over 1.1 million acres, recreation abounds in the cool atmosphere of the **Bighorn National Forest**. Over 1,500 miles of trails offer ideal biking or hiking, and numerous trout-loaded lakes provide fishing. Wildlife such as black bears, moose, marmots, mountain lions, and deer reside here, so wildlife watching always proves interesting. Stay overnight in one of 32 campgrounds for a night under the stars.

Leave behind your vehicle to enter the **Cloud Peak Wilderness** which is fully encompassed by the Bighorn National Forest. All motorized or mechanical vehicles are banned from this pristine wilderness, comprised of fir, aspen, pine, and spruce trees. Many roads transect the Forest, giving access to trailheads into the Cloud Peak Wilderness, as well as lakes, streams and ponds for fishing, sightseeing and more! Bring your ATV or bicycle to roam the Forest roads, but plan to leave them behind once you cross the Cloud Peak Wilderness boundary!

On the western edge of Medicine Wheel you'll find the **Pryor Mountain Wild Horse Range**, a perfect place to see these living landmarks of the West. You can also learn about the color, conformation, and behavior of the Pryor Mountain Wild Horses as well as their history at the Pryor Mountain Wild Mustang Center just outside of Lovell. Stop in and learn how and where to best view the wild horses as the Center keeps track of the current location and status of individual horses. There are often domesticated descendants of the Pryor Mountain Wild Horses available for viewing on the Center's property.



COURTESY OF TALBOT HAUFFE, WYOOI



WYOMING OFFICE OF TOURISM

## WHEN YOU GO

**Medicine Wheel National Historic Landmark**  
(307) 777-7697 | [wyoshpo.state.wy.us](http://wyoshpo.state.wy.us)

**Big Horn National Forest**  
(307) 674-2600 | [www.fs.fed.us](http://www.fs.fed.us)

**Pryor Mountain Wild Mustang Center**  
(307) 548-9453 | [www.pryormustangs.org](http://www.pryormustangs.org)

# Big Spring Scenic Backway



COURTESY OF TALBOT HAUFFE



## BACKWAY BASICS

The Big Spring Scenic Backway is a 68-mile route from Kemmerer to Cokeville in Wyoming's southwestern Lincoln County. The Backway is crisscrossed by historic emigrant trails, parallels carved river valleys, and plunges deep into the Tump Mountain Range in the Bridger National Forest. Traveler services are available in Kemmerer, Cokeville, and Diamondville. Good tires are highly recommended when traveling this unpaved Backway. The Forest Service also recommends only high clearance vehicles westward from Kelley Guard Station.



COURTESY OF TALBOT HAUFFE



COURTESY OF TALBOT HAUFFE



WYOMING OFFICE OF TOURISM

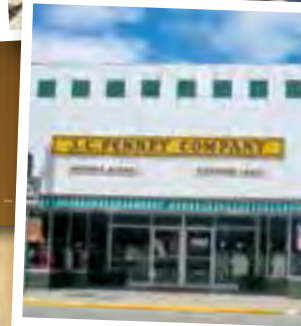


COURTESY OF TALBOT HAUFFE, WYDOT

## SIDE ADVENTURES

This rugged Wyoming backway is chockfull of local history—about 57 million years of it! Start your trip just west of Kemmerer at **Fossil Butte National Monument**. Hike into a prehistoric lake bed, join paleontologists for a fossil hunt, or meet the inhabitants of an ancient water ecosystem at the visitor center. From there it's a short drive east to Kemmerer and a very different sort of museum. In 1902, entrepreneur James Cash Penney opened his "**Golden Rule Store**." Named for his policy of fair dealing and honest value, Penney's venture grew and prospered. Today, with more than 1,600 stores in operation, JC Penney's is a household name, and the Golden Rule Store, along with the JC Penney Home/Museum, are still open for business. And if you're lucky enough to be in town the last weekend of July, make sure to check out Wyoming's largest free festival. The **Oyster Ridge Music Festival** features world-class bluegrass, rock, and country acts. With free camping, free shuttles, and a venue at Triangle Park in downtown Kemmerer, this musical extravaganza is definitely worth a look.

WYOMING OFFICE OF TOURISM



WYOMING OFFICE OF TOURISM

## ALONG THE WAY

Leaving Kemmerer behind, you turn onto the dirt track of Big Spring Scenic Backway itself. Abandoned homesteads are visible from the Backway, testament to the western migration of the 19th century. The Old Settler Cabin is the first of these, a sagging log structure on a windswept plain. More than 350,000 emigrants with loaded wagons crossed this landscape, headed toward the good life in Oregon from 1841-68. As you make your way towards Cokeville and the end of the Backway, keep in mind that this was once the sheep capital of the world. Its proximity to the Utah and Idaho border gave long-ago rustlers and outlaws, including Butch Cassidy, a handy way to escape into neighboring jurisdictions.



## WHEN YOU GO

**Fossil Butte National Monument**

(307) 877-4455 | [www.nps.gov/fobu](http://www.nps.gov/fobu)

**JCPenney Home/Museum & Mother Store**

(307) 877-3164 | [www.kemmerer.org/jcpenney.php](http://www.kemmerer.org/jcpenney.php)

**Oyster Ridge Music Festival**

(307) 877-6958 | [www.oysterridgemusicfestival.com](http://www.oysterridgemusicfestival.com)



WYOMING OFFICE OF TOURISM

# Mirror Lake Scenic Byway



Evanston

80

10

2-3  
HOURS

150



COURTESY OF MARILEE JACKSON

COURTESY OF TALBOT HAUFFE, WYDOT

COURTESY OF TALBOT HAUFFE, WYDOT



COURTESY OF GREGG YOUNGER  
LEARNINGBLEND.COM

## BYWAY BASICS

The Mirror Lake Scenic Byway extends from Evanston, Wyoming to Kamas, Utah. The Wyoming section of the byway provides southbound travelers with a panoramic view of the Uinta Mountains—the only major mountain range in the U.S. with an east/west axis. The byway reaches an elevation of 10,620 feet at Bald Mountain Pass, and offers spectacular views of the surrounding alpine landscape.

Driving time in Wyoming is about 20 minutes. With a total length of 78 miles between Wyoming Highway 150 and Utah State Road 150, driving the entire Mirror Lake Scenic Byway can take 2 to 3 hours depending upon side adventures.

WYOMING/UTAH STATE LINE





## SIDE ADVENTURES

**South of the Border:** Passing into Utah, you'll soon cross over into **Uinta-Wasatch-Cache National Forest**. Albion Basin boasts a magnificent display of rare and colorful wildflowers, spring, summer, and fall. Pineview Reservoir hosts an astounding 750,000 water-loving visitors annually. The High Uintas Wilderness Area offers a remote and refreshing escape from the congestion of urban & suburban life. And if you're into driving tours, **Mirror Lake** isn't the only game in town. No fewer than eight national scenic byways pass through this forest.

**Go Stand in the Corner:** Follow County Road 153 to a historic site with an obelisk that designates the southwest corner of Wyoming.

**Bear River:** Featuring a Tourist Information Center, picnic areas and a small herd of bison and elk (kept for public viewing in cooperation with the Wyoming Game and Fish Department) **Bear River State Park** is a popular stop for travelers on the I-80 corridor. The park also contains nearly 3 miles of hiking/bicycling trails which connect to the Bear Project, a greenbelt activity sponsored by the City of Evanston. The annual Bear River Rendezvous celebrates the region's trapping heritage with mountain men and women recreating a typical 1820s gathering. As you drive the byway itself, take a moment to appreciate the terrain to your west. The Bear River Valley was the summer encampment for the Shoshone Indians led by Chief Washakie.



WYOMING OFFICE OF TOURISM



WYOMING OFFICE OF TOURISM

## HISTORIC EVANSTON

The "Queen City of the Mountains," **Evanston** is recognized as a Wyoming leader for its historic preservation efforts. Grab a brochure at City Hall or the Chamber of Commerce and take the Historic Downtown Walking Tour. You'll visit museums and architectural treasures like the Chinese Joss House and Chinese Gardens, the Uinta County Museum, the Beeman-Cashin Building, the Historic Downtown, and the Evanston Roundhouse and Rail yards, all within a few blocks of Historic Depot Square. Or if a nature hike is more your speed, try the Bear River Greenway, a paved walkway along the Bear River. Stretching 2.3 miles from 9th Street to Bear River State Park, it's a perfect place for walking, jogging, biking or watching wildlife.

WYOMING OFFICE OF TOURISM



WYOMING OFFICE OF TOURISM

## WHEN YOU GO

### Uinta-Wasatch-Cache National Forest

(801) 236-3400 | [www.fs.usda.gov/attmain/uwcnf/](http://www.fs.usda.gov/attmain/uwcnf/)

### Bear River State Park

(307) 789-6540 | [wyoparks.state.wy.us](http://wyoparks.state.wy.us)

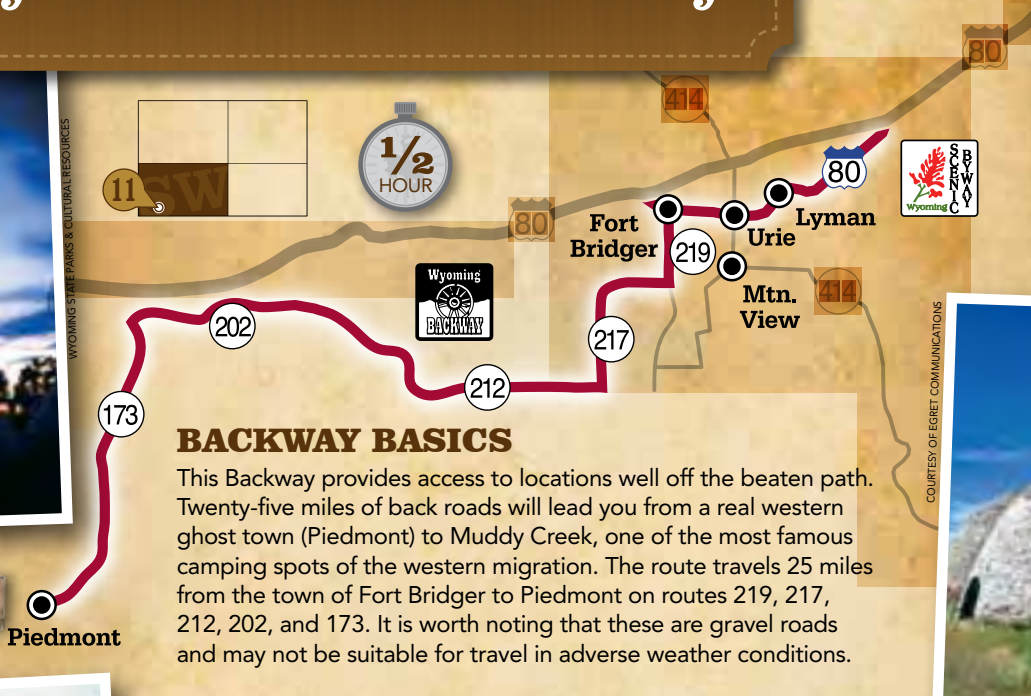
### Evanston Walking Tour

(307) 783-6300 | [www.preserveamerica.gov/PAcommunity-evanstonWY](http://www.preserveamerica.gov/PAcommunity-evanstonWY)

# Muddy Creek Historic Backway



WYOMING STATE PARKS & CULTURAL RESOURCES



COURTESY OF EGRET COMMUNICATIONS



## BACKWAY BASICS

This Backway provides access to locations well off the beaten path. Twenty-five miles of back roads will lead you from a real western ghost town (Piedmont) to Muddy Creek, one of the most famous camping spots of the western migration. The route travels 25 miles from the town of Fort Bridger to Piedmont on routes 219, 217, 212, 202, and 173. It is worth noting that these are gravel roads and may not be suitable for travel in adverse weather conditions.

## A POPULAR CAMPSITE

There was good water and plenty of grass, and the animals were well-fed by the tall bunch-grass growing along the creek. It was an ideal campsite, and a popular one. 70,000 Mormon pioneers crossed, passed through, or camped at **Muddy Creek**. In the summer of 1847, it was used by Brigham Young's first group of Mormon pioneers. 2,000 men of the U.S. army camped here in June of 1858. The original Transcontinental Railroad bed passed through in 1869. The site even played host to the Muddy Overland Stage Stop and Pony Express Station.

## GHOST TOWN

This backway dead ends, appropriately enough, at the ghost town of **Piedmont** and the Piedmont charcoal kilns. This road follows the path of the pioneers and the transcontinental railroad, so keep an eye out for the small white markers that designate the Mormon/California Trail. The remains of the town of Piedmont are on private property so visitors should respect private lands. The charcoal kilns are a designated state historic site. In the mid-nineteenth century, the kilns provided charcoal for smelters in the Utah Valley.



WYOMING OFFICE OF TOURISM



# Bridger Valley Historic Byway



WYOMING OFFICE OF TOURISM

WY WILDLIFE AND NATURAL RESOURCE TRUST

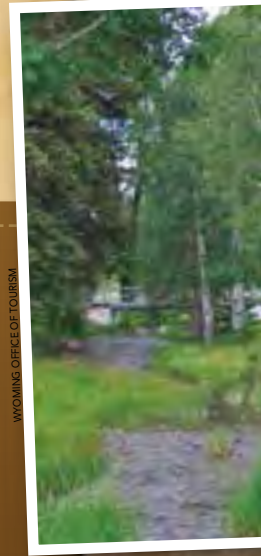


COURTESY OF TALBOT HAUFFE, WYDOT



## BYWAY BASICS

The Byway area was, for a century, a crossroads for the California/Oregon Trail, the Mormon Trail, the Pony Express Route, the Transcontinental Railroad, and the Lincoln Highway. Incorporating the towns Fort Bridger, Urie, Mountain View, and Lyman, which were bypassed when Interstate 80 was built, Bridger Valley Historic Byway is an approximately 20 mile loop showcasing some of Wyoming's most treasured historical sites. The route runs from I-80 Exit 34 and rejoins the interstate at Exit 48.



WYOMING OFFICE OF TOURISM

## JIM BRIDGER'S STOMPING GROUNDS

The Uinta Mountains rise beyond the badlands to the south, the mesas stretch in grassy slopes to the westward plateaus, and rich farmland rolls all around you. The landscape is much as it was when mountain man Jim Bridger established his trading post in 1843. You can still visit Fort Bridger today, taking time to visit the museum, historical buildings, and a replica of the original Bridger Trading Post. If you're lucky enough to visit in the first weekend of September, you can stop in and experience the annual Mountain Man Rendezvous—one of the largest mountain man gatherings in the nation. With over 120 vendors, Native American drummers and singers, history presentations, and mountain man games, it's well worth the drive to see. While you're there, make sure to stop in at the adjacent Orange and Black Tourist Court, a restored glimpse back into the early days of Lincoln Highway travel.

## WHEN YOU GO

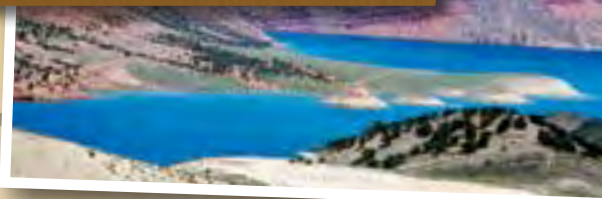
**Fort Bridger/Piedmont Kilns**

(307) 782-3842 | [wyoparks.state.wy.us](http://wyoparks.state.wy.us)

**Mountain Man Rendezvous**

[www.fortbridgerrendezvous.net](http://www.fortbridgerrendezvous.net)

# Flaming Gorge/Green River Scenic Byway



WYOMING OFFICE OF TOURISM

## BYWAY BASICS

Your trip through Flaming Gorge/Green River Scenic Byway begins just west of Rock Springs. Head south on U.S. Highway 191 deep into redrock country and the Green River-Colorado drainage basin. Spanning the Wyoming/Utah border, this route winds through the high desert, astonishing rock formations, and glistening mountain peaks. Expect a minimum drive time of 5 hours on this 160 mile byway.

## WILD HORSES OF THE RED DESERT

The Pilot Butte Wild Horse Scenic Loop Tour runs roughly 23 miles along good, gravel-base roads. Travel this route and you may meet wild roans, blacks, paints, Appaloosas and sorrels, all amidst panoramic views of the Wyoming Range to the west, the Wind River Range to the northeast and the Uinta Range to the south. Placed along the route are a handful of kiosks that delve into the origin of the horses (most are descendants of horses long ago turned out by the region's ranchers) and reflect on the area's geography and history.



## FLAMING GORGE COUNTRY

The region has long been popular for exploration. Indian tribes, fur trappers, and early pioneers all made use of this land. Hundreds of thousands of emigrants crossed the treacherous Green River, and many of their diaries mention the crossing and its difficulties. Ferries were often swept away by the strong currents and lives and possessions were lost.

This is the landscape that attracted the likes of John Wesley Powell, who on May 24, 1869 set off on an expedition down the Green River, then the last unexplored river in North America. You can retrace the steps of his expedition today, starting at Expedition Island in the Town of Green River, Powell's launching point.

The river no longer runs free, since a dam at Red Canyon in Utah was completed in 1964. The resulting Flaming Gorge Reservoir is a centerpiece of area recreation, offering world-class trophy fishing and boating. The reservoir itself is a part of the Flaming Gorge National Recreation Area, a 91-mile long playground for adventurers, campers, and ATV enthusiasts. Visitors can enjoy developed campgrounds and marinas or explore the backcountry and bays of this spectacular high desert oasis.

WYOMING OFFICE OF TOURISM



## SEEDSKADEE NATIONAL WILDLIFE REFUGE

Established in 1965 as mitigation for the loss of habitat when Flaming Gorge and Fontenelle dams were built, Seedskadee lies a half hour north of the Byway on WY-372. The name Seedskadee originated from the Shoshone Indian word "Sisk-a-dee-agie" meaning "river of the prairie hen." The 27,230 acre Refuge protects a mosaic of riparian, wetland, and upland shrub habitats along 36 miles of the Green River. The corridor is an important migration route and nesting area for a wide variety of waterfowl, making for some of the region's finest bird watching.

WYOMING OFFICE OF TOURISM



WYOMING OFFICE OF TOURISM

## WHEN YOU GO

**US Forest Service, Flaming Gorge National Recreation Area**  
(435) 784-3445 | [www.utah.com/nationalsites/flaming\\_gorge](http://www.utah.com/nationalsites/flaming_gorge)

**Seedskadee National Wildlife Refuge**  
(307) 875-2187 | [www.fws.gov/seedskadee](http://www.fws.gov/seedskadee) | [www.wyodino.org](http://www.wyodino.org)

**Rock Springs Chamber of Commerce**  
(307) 362-3771 | [www.rockspringschamber.com](http://www.rockspringschamber.com)

**Green River Chamber of Commerce**  
(307) 875-5711 | [www.grchamber.com](http://www.grchamber.com)



# Seminole-Alcova Backway



## BYWAY BASICS

The Seminoe to Alcova Backway runs 64 miles between Sinclair on Interstate 80 and Alcova on Wyoming Highway 220. The byway is a combination of paved and graveled roads and is generally passable from May to November. However, the segment north of Seminoe State Park is very steep, and not recommended for motor homes or vehicles pulling trailers. There are no services along the byway until you reach Alcova, so make sure you have adequate fuel and a good spare tire. Driving time is around 2 hours.



COURTESY OF FRED PELLUGHOFF



COURTESY OF TALBOT HAUFFE



COURTESY OF TALBOT HAUFFE



## ALONG THE WAY

**Miracle Mile:** a blue-ribbon trout fishery of the North Platte River. Populated by browns and cutthroats, many in 14- to 18-inch and five- to ten-pound range, this is the sort of place where a "smallish" fish can make your day. Fly fishermen should make sure to hit the local bait shops and stock up on "Platte River Specials."

**Seminole Sand Dunes:** the impressive dunes visible from the road are part of the Ferris Dune Field, itself part of a massive geological formation which reaches from western Wyoming all the way to Nebraska. The sand that makes up these dunes originated in the Great Divide Basin of south central Wyoming and was first deposited in ancient lake or sea beds.

**Cottonwood Creek Dinosaur Trail:** 5th graders discovered numerous dinosaur bones here in 1991. Today, these reside in a museum in Casper, but hikers can still follow the BLM trail and see many of the remaining fossils.

**Seminole State Park:** spectacular boating, world class trout fishing, two campgrounds and a beach.

**Fort Fred Steele State Historic Site:** Established in 1868 to protect the railroad work crews against Indian attacks. Occupied until 1886. Self-guided tours of the ruins are provided by signage.

WYOMING OFFICE OF TOURISM



## THE TOWNS

The southern end of the backway is marked by a high plains company town. Originally called Parco, after the Producers & Refiners Corporation (or PARCO) which founded the refinery and the town, it was renamed Sinclair after PARCO was acquired during the Great Depression by Sinclair Consolidated Oil Corporation. The original refinery, located in the center of the town, remains in use to this day.

Just a little west of Sinclair is the city of Rawlins. Tour the **Wyoming Frontier Prison**, an impressive historic site founded in 1888, opened in 1901, and in operation all the way up to 1981. Hour-long guided tours take visitors through three cell blocks, the cafeteria, the grounds, and the Death House. Visitors to Rawlins can even get up close and personal with one of Wyoming's more unusual outlaws, "Big Nose" George Parrott, at the **Carbon County Museum**. A cattle rustler hanged for his crimes in 1881, Big Nose George became both a medical experiment and a fashion accessory. While doctors Thomas Maghee and John Eugene Osborne studied the outlaw's brains for clues to his criminality, the dead man's skin became a pair of shoes, still on display in the museum.

WYOMING OFFICE OF TOURISM



WYOMING OFFICE OF TOURISM



## WHEN YOU GO

### Seminole State Park

(307) 320-3013 | [wyoparks.state.wy.us](http://wyoparks.state.wy.us)

### Fort Fred Steele State Historic Site

(307) 320-3013 | [wyoparks.state.wy.us](http://wyoparks.state.wy.us)

### Wyoming Frontier Prison

(307) 324-4422 | [www.wyomingfrontierprison.org](http://www.wyomingfrontierprison.org)



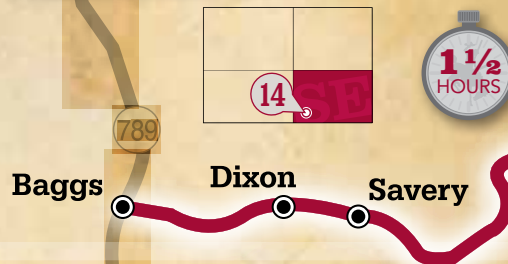
# Battle Pass Scenic Byway

## BYWAY BASICS

The 23 mile Battle Pass Scenic Byway crosses south-central Wyoming through the **Sierra Madre Mountains**. Named for a fight between mountain men and Native Americans in 1841, the entire area offers historic mining sites and cultural resources in conjunction with beautiful natural vistas, unique geology and recreational outlets. While the Snowy Range Scenic Byway twenty miles to the east of Encampment draws thousands of visitors each year, Battle Pass and WYO 70 remain largely undiscovered.



COURTESY OF TALBOT HAUFFE, WYDOT



COURTESY OF TALBOT HAUFFE, WYDOT

COURTESY OF THE WYOMING HISTORICAL SOCIETY

COURTESY OF MARY STEINBACHER



## ALONG THE WAY

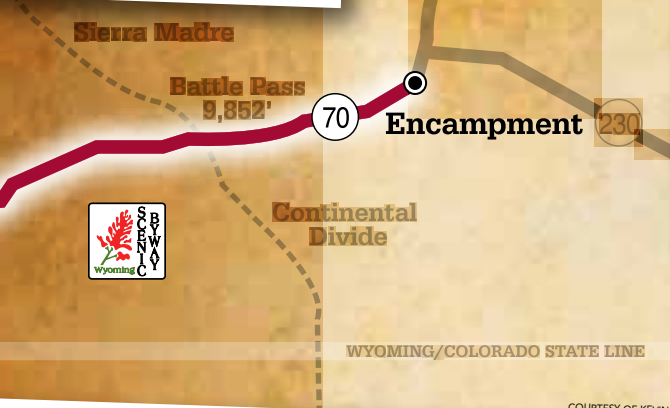
Copper resources within the range were extracted during the late 19th and early 20th centuries by a Ferris-Haggarty mine. Its operations were centered near Encampment, Wyoming. Gold findings in the range during the 1890s sparked a short-lived gold rush that attracted thousands of prospectors. The possibility of further discoveries renewed interest during the late 20th and early 21st centuries. Much of the range lies within the **Medicine Bow – Routt National Forest**. Protected areas include the **Encampment River Wilderness** and the **Huston Park Wilderness**. It is traversed by Wyoming Highway 70, which crosses the **Continental Divide** at Battle Pass.







COURTESY OF TALBOT HAUFEE, WYDOT



COURTESY OF KEVIN MCCOY

## WILDLIFE ABOUNDS

The range supports a number of popular game species, including elk, mule deer, antelope, moose, wild turkey, and grouse, along with other species mentioned in the state's Comprehensive Wildlife Conservation Strategy Report. In 2009, the state's Game and Fish Department, describing its wildlife as "world class," issued a report recommending that the area's natural values be analyzed and that energy development leases in the area be withdrawn.

COURTESY OF TALBOT HAUFEE, WYDOT



COURTESY OF TALBOT HAUFEE, WYDOT

## WHEN YOU GO

### Grand Encampment Museum

(307) 327-5308 | [www.gemuseum.com](http://www.gemuseum.com)

### Little Snake River Museum

(307) 383-7267 | [www.littlesnakerivermuseum.com](http://www.littlesnakerivermuseum.com)

### Carbon County Visitors Council

(307) 324-3020 | [www.wyomingcarboncounty.com](http://www.wyomingcarboncounty.com)

# Snowy Range Scenic Byway

## BYWAY BASICS

The Snowy Range Scenic Byway crosses the Medicine Bow Mountain Range and includes the 29 miles of the Medicine Bow-Routt National Forest portion of Wyoming Highway 130. This Byway is located in southern Wyoming and can be reached by exiting Interstate 80 at Laramie or at Walcott Junction approximately 20 miles east of Rawlins. The Byway route rises from 8,000 ft. on the valley floor to a height of 10,847 ft. above sea level. The route closes for the season in mid-November, and traditionally reopens with the help of snowplows before Memorial Day weekend. Total driving time is about 1 hour.



WYOMING OFFICE OF TOURISM



CHUCK BARTLETT/TOWN OF SARATOGA



COURTESY OF EGRET COMMUNICATIONS



COURTESY OF FRED PFLUGHOF

## NATIVE AMERICAN HISTORY

This land has a long history, reaching back as far as 8,000 years when ancestors of the Plains Indians inhabited the area. The Northern Arapaho, Oglala Sioux, Northern Cheyenne, Eastern Shoshone and the White River Utes all frequented the area. They utilized the forest to gather the prime "mountain mahogany" they preferred to use when making bows. The soothing mineral hot springs along the banks of the North Platte River were important to tribal life. Each spring, tribes would compete for land and wild game, only agreeing to share the hot springs, "the place of magic waters". You can still visit at least one of those springs today in the town Saratoga. Admission to the public hot springs, locally referred to as the "Hobo Pools," is free.





COURTESY OF FRED PFLUGHOF

## ALONG THE WAY

From Centennial the road heads upward, and it's all natural beauty and outdoor recreation from here on out. For hikers, Sugarloaf Recreation Area is perhaps the best of many worthwhile trips. There are 36 miles of hiking trails on and around Medicine Bow Peak, ranging from very flat and brief to more arduous day hikes. Anglers can look forward to plentiful rainbow trout, brook trout and Wyoming's only native trout, the cutthroat. Lake Marie and its sister Mirror Lake are popular fishing spots. Both are glacier-fed lakes, which reflect the majesty of Medicine Bow Peak and are favorites of artists and photographers. Snowy Range Ski Area is a popular winter destination for locals and nearby out-of-staters, and snowmobilers can find some of the best conditions in the country.

WYOMING OFFICE OF TOURISM



COURTESY OF FRED PFLUGHOF



## THE TOWNS

Laramie makes a great start to a day on the road. Take some time to explore the historic downtown, one of the many museums at the University of Wyoming or in town, or the Territorial Prison State Historic Site. Built in 1872 and dedicated to "evildoers of all classes and kinds," the prison held some of the most notorious outlaws in Wyoming's history. Butch Cassidy actually cooled his heels here for a spell from 1894 to early 1896.

Further up the road is the tiny town of Centennial, population 100. Stop for lunch, fuel up, and take a stroll through the Nici Self Museum, a charming exhibition of local history.



WYOMING OFFICE OF TOURISM

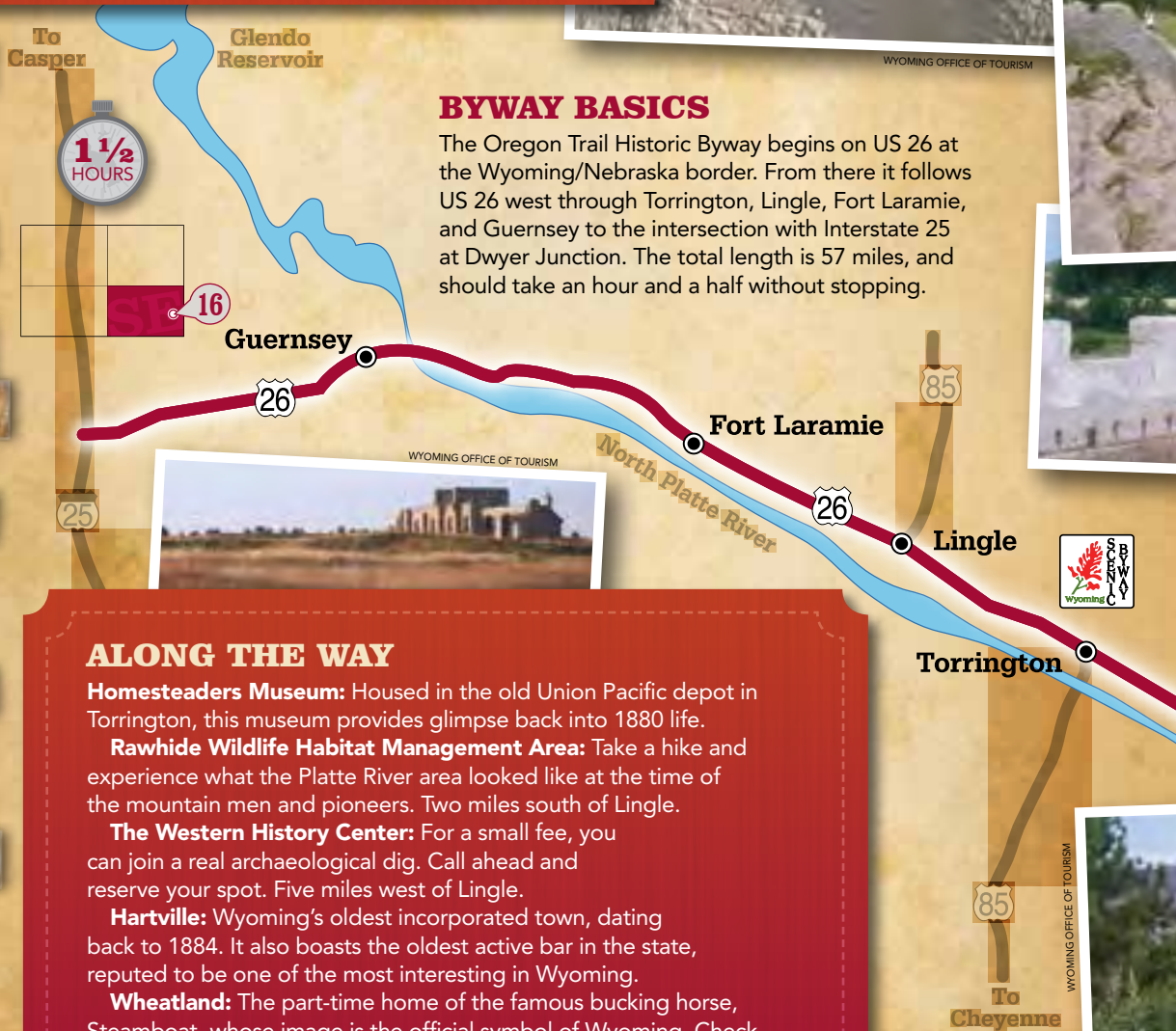
## WHEN YOU GO

**Medicine Bow-Routt National Forest**  
(307) 745-2300 | [www.fs.fed.us](http://www.fs.fed.us)

**Laramie Area Attractions**  
(800) 445-5303 | [www.visitlaramie.org](http://www.visitlaramie.org)

**Saratoga Hot Springs**  
(307) 326-8855 | [www.saratogachamber.info](http://www.saratogachamber.info)

# Oregon Trail Historic Byway



## BYWAY BASICS

The Oregon Trail Historic Byway begins on US 26 at the Wyoming/Nebraska border. From there it follows US 26 west through Torrington, Lingle, Fort Laramie, and Guernsey to the intersection with Interstate 25 at Dwyer Junction. The total length is 57 miles, and should take an hour and a half without stopping.

## ALONG THE WAY

**Homesteaders Museum:** Housed in the old Union Pacific depot in Torrington, this museum provides glimpse back into 1880 life.

**Rawhide Wildlife Habitat Management Area:** Take a hike and experience what the Platte River area looked like at the time of the mountain men and pioneers. Two miles south of Lingle.

**The Western History Center:** For a small fee, you can join a real archaeological dig. Call ahead and reserve your spot. Five miles west of Lingle.

**Hartville:** Wyoming's oldest incorporated town, dating back to 1884. It also boasts the oldest active bar in the state, reputed to be one of the most interesting in Wyoming.

**Wheatland:** The part-time home of the famous bucking horse, Steamboat, whose image is the official symbol of Wyoming. Check out the town's colorful murals and equally colorful historic district.





COURTESY OF ANGI THAMPER



WYOMING OFFICE OF TOURISM

WYOMING/NEBRASKA STATE LINE

To  
Scottsbluff



## THE HISTORY

As you cross the state line from Nebraska to Wyoming, you're already walking in the footsteps of history. The nearby Oregon Trail Marker indicates the spot where the Oregon Trail entered Wyoming, and you're well on your way to the Old West.

If you only make one stop along this drive, make it at **Historic Fort Laramie**. The fort had its beginning in June, 1834, when fourteen Rocky Mountain Fur Company men built a small stockaded post. During its active 56-year existence, Fort Laramie became a haven for gold seekers and weary emigrants, a station for the Pony Express and the Overland Stage, and served as an important military post during the Plains Indian Wars. It witnessed the growth of the open range cattle industry, the coming of the homesteaders and the final settlement in the 1890s marking the closing of the frontier. The fort was abandoned in 1890, the year that Wyoming gained statehood, but visitors today can still see 22 original structures complete with an audio tour.

The nearby **Guernsey State Park** is also worth a stop. The park is well known for its boating opportunities and historic Civilian Conservation Corp architecture, but what makes it truly unique is **Register Cliff**. A sandstone precipice rising one hundred feet from the valley floor of the North Platte River, it is one of three main sites along the Oregon Trail where emigrants left inscriptions, still visible today. Stop off at the **Oregon Trail Ruts** as well. Although many remnants of the trail can be seen in Wyoming, the Oregon Trail tracks here are notable because they were cut into solid rock. A short trail leads to four deep gouges cut by the wheels of thousands of wagons.

WYOMING OFFICE OF TOURISM



WYOMING OFFICE OF TOURISM



## WHEN YOU GO

**Guernsey State Park, Register Cliff, Trail Ruts**

(307) 836-2334 | [wyoparks.state.wy.us](http://wyoparks.state.wy.us)

**Fort Laramie**

(307) 837-2221 | [www.nps.gov/foia](http://www.nps.gov/foia)

**Rawhide Wildlife Habitat Management Area**

(307) 777-4600 | [gf.state.wy.us/wildlife/access/gf/whma/rawhide](http://gf.state.wy.us/wildlife/access/gf/whma/rawhide)

**Western History Center**

(307) 837-3052

# South Big Horn/Red Wall Scenic Backway



## BACKWAY BASICS

The South Big Horn/Red Wall Scenic Backway is a horseshoe-shaped, 102-mile route that explores the southern end of the Big Horn Mountain Range. It begins and ends by leaving U.S. 20/26 in central Wyoming west of Casper and east of Shoshone.

The Backway is mostly a gravel road, passable for most high-clearance vehicles in the summer and fall. Trailers, fifth-wheelers and motor homes are not suited for this Backway.

## WIDE OPEN SPACES

This is the vast interior of Wyoming, the open range land of ranchers and of solitude. You're more likely to encounter a flock of sheep on this Backway than another vehicle, so be prepared to stop—open range means open range.

As you slowly gain elevation through Fifty-Mile Flat, the landscape begins to change. Ponderosa pines spring up from the prairie, along with wind-carved rock formations. The red mesas begin to gain in prominence, and soon you'll find yourself face-to-face with Red Wall. A long, northeast-to-southwest escarpment of red sandstone and shale, Red Wall is not just a geologic marvel. It also marks an interesting historic site. Not far to the north is the famous **Hole-in-the-Wall**, hideout of outlaws Butch Cassidy and the Sundance Kid.



## BUTCH AND SUNDANCE

History books say Butch Cassidy, born Robert LeRoy Parker, and the Sundance Kid, born Harry Longbaugh, went down in a blaze of glory during a gunfight with local law enforcement near San Vincent, Bolivia, on November 6, 1908. They left Wyoming in 1901 in an attempt to evade the Pinkerton Detective Agency, known today as the FBI.

There is much debate over whether this was the duo's true fate. Some believe instead the story told by Butch's sister, Lula Parker Betenson, that the outlaws faked their deaths and returned to the States, living anonymously for years before both dying in the 1930s. No matter which story you believe one thing is certain: They leave behind a legacy of mystery and intrigue that entices thousands of people to retrace their footsteps throughout Wyoming.

WYOMING OFFICE OF TOURISM



WYOMING OFFICE OF TOURISM

## NEARBY MUSEUMS

East of the backway is Casper, Wyoming's second largest city and home to two of the state's finest museums. **The Nicolaysen Art Museum** is the capitol of Wyoming's fine art world. Founded in 1967 as a small art showing, The Nic has since grown into a primary center for contemporary artists in the Rocky Mountain Region.

History lovers won't want to miss the **National Historic Trails Interpretive Center**. The Trails Center tells the story of the thousands of people who traveled the Oregon, Mormon, California and Pony Express trails in the 1800s, etching their stories in American history. Featuring multiple hands-on exhibits and an award-winning multimedia presentation at the facility's central diorama, the Trails Center is a must-see for any history buff.



COURTESY OF TALBOT HAUFFE, WYDOT



WYOMING OFFICE OF TOURISM

Bucknum



County 125

To  
CASPER

## WHEN YOU GO

**The Nicolaysen Art Museum**

(307) 235-5247 | [www.thenic.org](http://www.thenic.org)

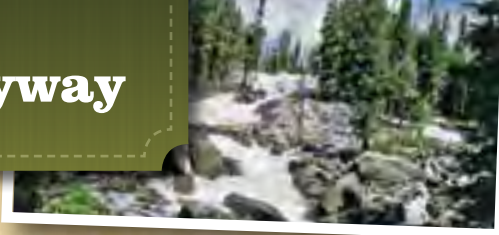
**National Trails Interpretive Center**

(307) 261-7700 | [www.blm.gov/wy/st/en/NHTIC](http://www.blm.gov/wy/st/en/NHTIC)

**Hole-in-the-Wall Buffalo BLM Field Office**

(307) 684-1100 | [goo.gl/wyoZ3](http://goo.gl/wyoZ3)

# Cloud Peak Skyway Scenic Byway



COURTESY OF THE WAGNER PERSPECTIVE

## THE TOWNS

**Ten Sleep** gets its name from by being ten sleeps (nights) between the Great Sioux Camps to the south and the northern camp located near Bridger, MT. Come through in July and you may see a cattle drive passing through the middle of town. Arrive in August to check out the **Nowoodstock Music Festival**. Arrive any time for a dose of western charm.

**Buffalo** has a lot to offer. Order up a sarsaparilla at the historic Occidental Hotel Saloon & Restaurant. Take a dip at the state's largest free outdoor swimming pool at the city park. Go for a hike on the Clear Creek Walking Trail, or simply wander the many art galleries and shops downtown. And if you happen to be in town in July, check out two great festivals. The **Big Horn Mountain Festival** offers acoustic, Americana, folk, old-timey, bluegrass & traditional music onstage at the Johnson County Fairgrounds, while the **National Basque Festival** is a wonderful glimpse into the music, food, dance, and crafts of the Basque culture.



COURTESY OF THE WAGNER PERSPECTIVE



**Powder River Pass**  
9,666'

## BYWAY BASICS

The Cloud Peak Skyway Scenic Byway is the southern-most route across the **Bighorn National Forest** in the Big Horn Mountains. The designated 47-mile stretch of the Scenic Byway, or U.S. 16, is a paved two-lane highway that crests at the 9,666-foot Powder River Pass. Travelers can expect hairpin turns, mountain vistas, and a trip through the majestic limestone walls of Ten Sleep Canyon. Mountain weather can be extreme and snow can fall in any month at these elevations but it rarely affects travel in the summer and early fall. Allow for a 1 hour minimum driving time.



COURTESY OF ROSIE BERGER





16

To  
Buffalo

## HISTORY

Running through the northern part of Johnson County, Cloud Peak Skyway is a road marked by history. The famed Johnson County Cattle War unfolded just south of the Byway in April 1892. A range war between wealthy cattle ranchers and small farmers, the final standoff saw 50 hired killers from the Wyoming Stock Growers Association holed up at the **TA Ranch** (today a guest ranch). Outside a posse of 200 men, led by the sheriff of Johnson County, lay siege. The stalemate finally ended with the intervention of President Benjamin Harrison and the Sixth Cavalry of Fort McKinney. One of several historic sites near the byway, Fort McKinney outside Buffalo serves today as the site for the Wyoming Soldiers and Sailors Home.

For a more accessible fort, visit **Fort Phil Kearny State Historic Site**. Named for a popular Union General, the fort was established in 1866 to protect immigrants on the Bozeman Trail on their way north to the gold fields of Montana, and also to prevent intertribal warfare between Native American tribes. A major player in the Plains Indian wars, the Fort stands as a testament to the clash between the US Army forces and Sioux, Cheyenne, and Arapaho Indians.



COURTESY OF FRED PFLUGHOF



WYOMING OFFICE OF TOURISM

COURTESY OF WYOMING ARTS COUNCIL



WYOMING OFFICE OF TOURISM

## WHEN YOU GO

### TA Ranch

(307) 684-5833 | [www.taranch.com](http://www.taranch.com)

### Fort Phil Kearny State Historic Site

(307) 684-7629 | [www.philkearny.vcn.com](http://www.philkearny.vcn.com)

### Big Horn National Forest

(307) 674-2600 | [www.fs.fed.us](http://www.fs.fed.us)

### Worland – Ten Sleep Chamber of Commerce

(307) 347-3226 | [www.worlandchamber.com](http://www.worlandchamber.com)

### Nowoodstock Music Festival

(307) 431-2022 | [www.nowoodstock.com](http://www.nowoodstock.com)

### Buffalo Chamber of Commerce

(800) 227-5122 | [www.buffalowyo.com](http://www.buffalowyo.com)

### Big Horn Mountain Festival

[www.bighornmountainfestival.com](http://www.bighornmountainfestival.com)

### National Basque Festival

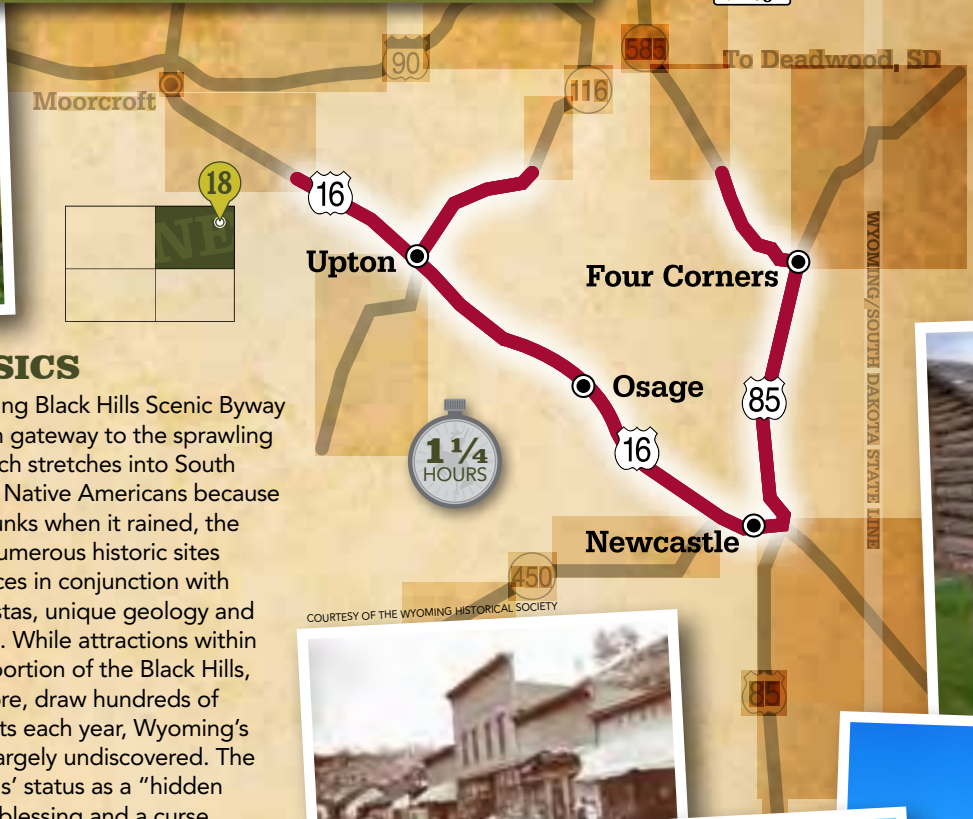
(800) 227-5122 | [www.bighornweb.com/nabo2011](http://www.bighornweb.com/nabo2011)

WYOMING OFFICE OF TOURISM

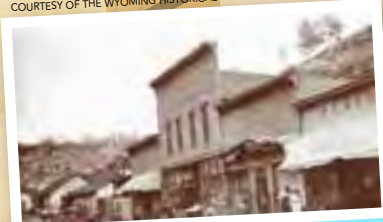
# Wyoming Black Hills Scenic Byway



COURTESY OF TALBOT HAUFFE, WYDOT



COURTESY OF THE WYOMING HISTORICAL SOCIETY



## BYWAY BASICS

The 78 mile Wyoming Black Hills Scenic Byway rests at the western gateway to the sprawling Black Hills area which stretches into South Dakota. Named by Native Americans because the color of tree trunks when it rained, the entire area offers numerous historic sites and cultural resources in conjunction with beautiful natural vistas, unique geology and recreational outlets. While attractions within the South Dakota portion of the Black Hills, like Mount Rushmore, draw hundreds of thousands of tourists each year, Wyoming's Black Hills remain largely undiscovered. The Wyoming Black Hills' status as a "hidden treasure" is both a blessing and a curse.

COURTESY OF TALBOT HAUFFE, WYDOT



## THE BLACK HILLS

The Black Hills (Pahá Sápa in Lakota, Mohta-vohonáeva in Cheyenne) are a small, isolated mountain range rising from the Great Plains of North America in western South Dakota and extending into Wyoming. Set off from the main body of the Rocky Mountains, the region is something of a geological anomaly—accurately described as an "island of trees in a sea of grass". Harney Peak, which rises to 7,244 feet (2,208 m), is the range's highest summit. The Black Hills encompass the Black Hills National Forest and are home to the tallest peaks of continental North America east of the Rockies.



COURTESY OF TALBOT HAUFFE, WYDOT

## RECREATION

Recreational opportunities abound in the vicinity. Hiking, camping, mountain biking, snowmobiling, fishing and hunting are just a few of the activities enjoyed in the Wyoming Black Hills. Travelers can explore the old ghost towns of Cambria and Tubb Town. Historical sites like the Jenny Stockade, Anna Miller Museum, Black Hills Stage Station and the Harper Grist Mill are all nearby. The Byway is important in that it gives the traveler of today the opportunity to see and understand what it was like for those who lived and traveled in this area 150 years ago. Much of the country hasn't changed since then and it's not hard for one to imagine what it was like for the pioneers and Native peoples to see this country for the first time. We cannot understand and appreciate who we are and what we have become if we do not appreciate the lives of those who have gone before and made this country into what it is today.



COURTESY OF THE WESTON COUNTY HISTORICAL SOCIETY

COURTESY OF TALBOT HAUFFE, WYDOT



COURTESY OF THE WESTON COUNTY HISTORICAL SOCIETY



## WHEN YOU GO

**Newcastle Area Chamber of Commerce**

(307) 746-2739 | [www.newcastlewyo.com](http://www.newcastlewyo.com)

**Anna Miller Museum**

(307) 746-4188 | [www.westoncountywyo-museum.org](http://www.westoncountywyo-museum.org)

**US Forest Service Hell Canyon Ranger District**

(307) 746-2782 | [www.fs.fed.us](http://www.fs.fed.us)

**Northeast Wyoming Welcome Center**

(307) 283-2440 | [www.wyomingtourism.org](http://www.wyomingtourism.org)