



Wyoming Department of Transportation

Bridge Rating & Analysis of Structural Systems

BRASS-PIER(LRFD)TM

Version 2.7

Getting Started Manual

November 2021

Copyright © 2013-2021 Wyoming Department of Transportation

Contents

Disclaimer.....	1
AASHTO Specification	1
Additional Information and Technical Assistance	1
Installing BRASS-PIER(LRFD) [™]	2
System Requirements	2
Installation Procedure.....	2
Registering the Export.....	3

Disclaimer

Portions of this system were developed cooperatively by the Federal Highway Administration and the Wyoming Department of Transportation. The Wyoming Department of Transportation and the Federal Highway Administration assume no liability or responsibility for and make no representations or warranties as to applicability or suitability of this computer system. Anyone making use thereof or relying thereon assumes all responsibility and liability arising from such use or reliance. This software is a tool for the design or analysis of structures. The engineer using this software is responsible for verification of the reasonableness of the results produced by BRASS-PIER(LRFD)™.

AASHTO Specification

BRASS-PIER(LRFD)™ is current with the AASHTO LRFD *Bridge Design Specifications*, 9th Edition, 2020. The US units version of the specifications is incorporated in this program.

Additional Information and Technical Assistance

Additional information may be obtained from:

Wyoming Department of Transportation

Bridge Program

5300 Bishop Boulevard

Cheyenne, WY 82009-3340

Telephone: (307) 777-4427

Fax: (307) 777-4279

Web Page: www.dot.state.wy.us/home/engineering_technical_programs/bridge/brass.html

FTP Site: <ftp://brass:password@wydot-ftp.wyo.gov>

Technical assistance may be obtained from:

Telephone: (307) 777-4489

E-mail: BRASSTechSupport@wyo.gov

Purchasing, billing and licensing assistance may be obtained from:

Telephone: (307) 777-4489

E-mail: BRASSBilling@wyo.gov

When requesting technical assistance, please visit the BRASS™ Incident Tracking System at <https://www.wydot-brass.com>. Users without an account on the incident tracking system can request an account by clicking on the “Open a New Account” link/button and e-mailing the address or calling the phone number listed. A username and password will be created and sent to the user. With this system, you may upload your data file and a description of the incident, any error messages, any bridge drawings, and any hand computations, which illustrate the concern. An Incident number will be assigned to track the progress of resolving the incident.

Installing BRASS-PIER(LRFD)[™]

The installation programs for all the BRASS[™] programs are loaded on a single DVD or may be obtained from the WYDOT FTP server. Instructions for accessing the FTP server are provided in the file **BRASSDOWNLOADANDINSTALLINSTRUCTIONS.pdf**. A password is required to install this program.

Listed below are the necessary system requirements to install BRASS-PIER(LRFD)[™] on your computer's hard drive.

System Requirements

Operating System	Microsoft Windows [™] 7, 8, 8.1, or 10
Microprocessor	Pentium IV or higher
Microsoft .NET Framework	N/A
Memory	128 MB required; more is better
Hard Disk Space	Approximately 25 MB
Disk Drive	DVD drive

Installation Procedure

The following procedure describes how to install BRASS-PIER(LRFD)[™]. This method may also be used for installation onto a network drive. See the **BRASSDOWNLOADANDINSTALLINSTRUCTIONS.pdf** for accessing the FTP server.

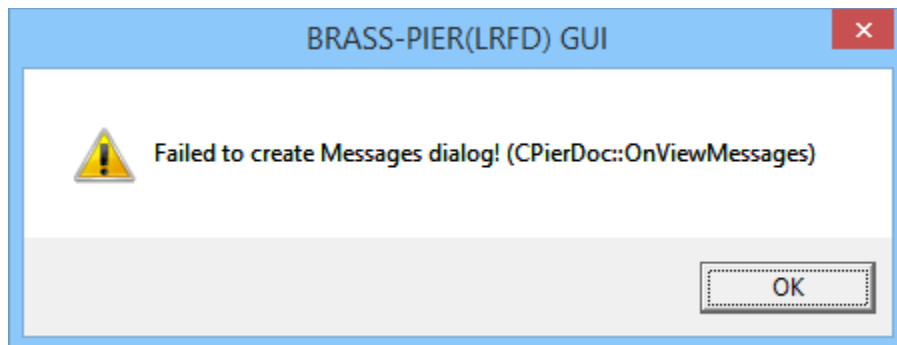
1. Browse to the **PierLrfd\Exe** directory on the DVD or FTP server to locate the installation executable **BrassPierLrfd-2.7-Install.exe**.
2. Download the installation executable from the FTP server if using that method.
3. Run the installation executable from Step 1 and follow the prompts.

BRASS-PIER(LRFD)[™] requires a version of the Microsoft .NET Framework. Download and install the appropriate Microsoft .NET Framework version from www.microsoft.com.

Registering the Export

It may be necessary to register the grid control (used on many of the user interface input forms) with the operating system. Generally, this is automatically performed by the BRASS™ installation. However, there are some cases where these files do not get automatically registered due to how the BRASS™ software is distributed to users within an agency.

If you receive the following message box when trying to open forms, you must manually register the grid control:



To register the grid control, run the following register batch file, which is located in the directory where BRASS-PIER(LRFD)™ is installed, e.g.,

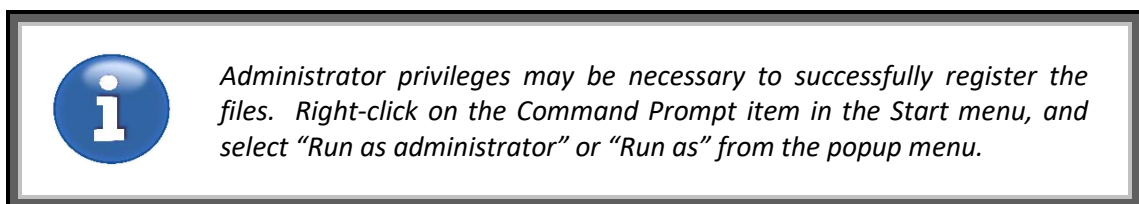
C:\Program Files (x86)\BRASS\PierLrfd or

D:\Program Files\BRASS\PierLrfd or

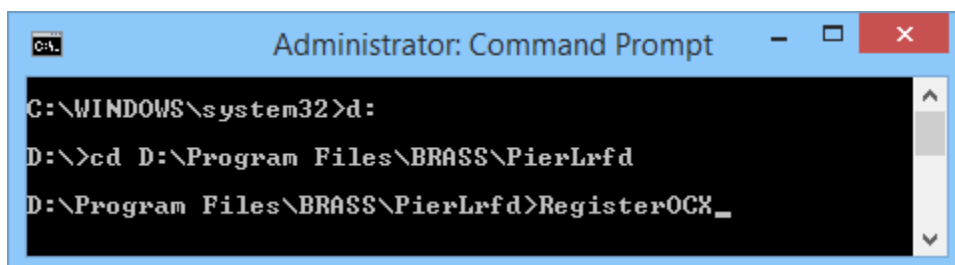
C:\BRASS\PierLrfd

The following procedure describes how to register the grid control files:

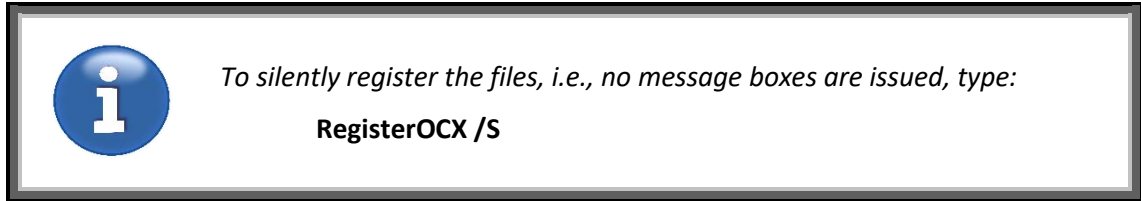
1. Open a Command Prompt.



2. Change the directory to where BRASS-PIER(LRFD) is installed. If the application is located on a different drive, change the drive first by typing the drive letter followed by a colon.



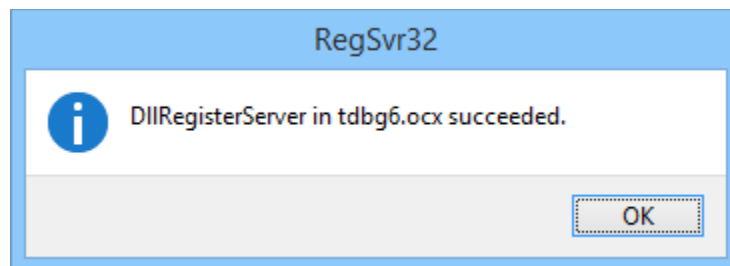
3. Type: **RegisterOCX**



4. Press the Enter key.

5. Click the OK button on the series of RegSvr32 message boxes that appear.

The following type of message box will be shown if the registration of a file is successful:



The following type of message box will be shown if the registration of a file is not successful:

