

EAST CHEYENNE PUBLIC MEETING

US 30
Whitney Road/
Dell Range Blvd
February 13, 2024



Project Team



Laramie County



WYOMING Department
of Transportation



City of Cheyenne

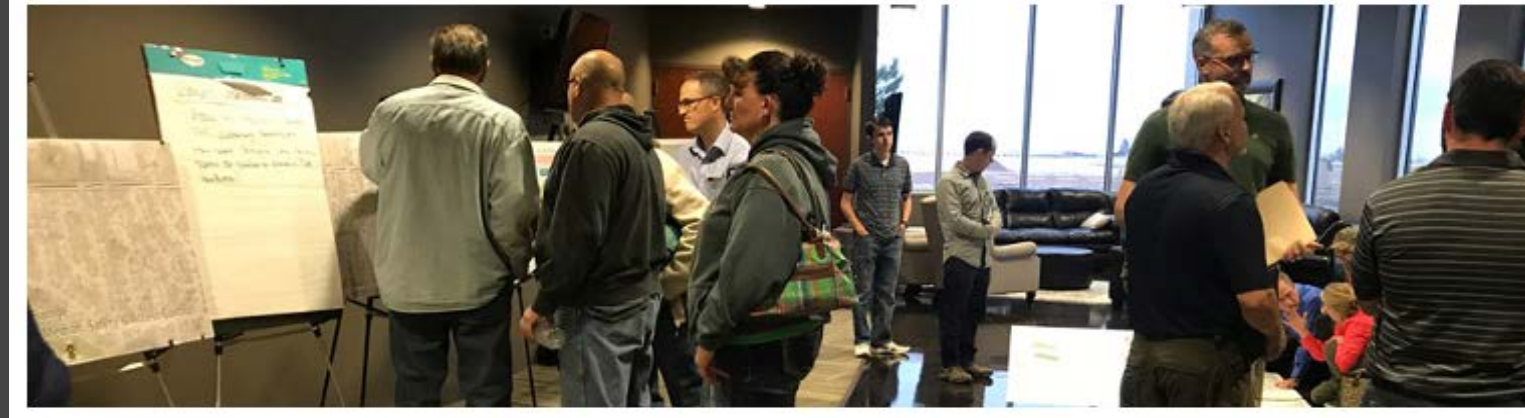


TONIGHT'S AGENDA


- **Introductions**
- **US 30 Project Update**
- **Overview of Future East Cheyenne Projects**
- **Audience Q&A**
- **Break into Open House Format**

PROJECT HISTORY


East Dell Range Boulevard / US 30
CORRIDOR STUDY
SEPTEMBER 2019



August 2020



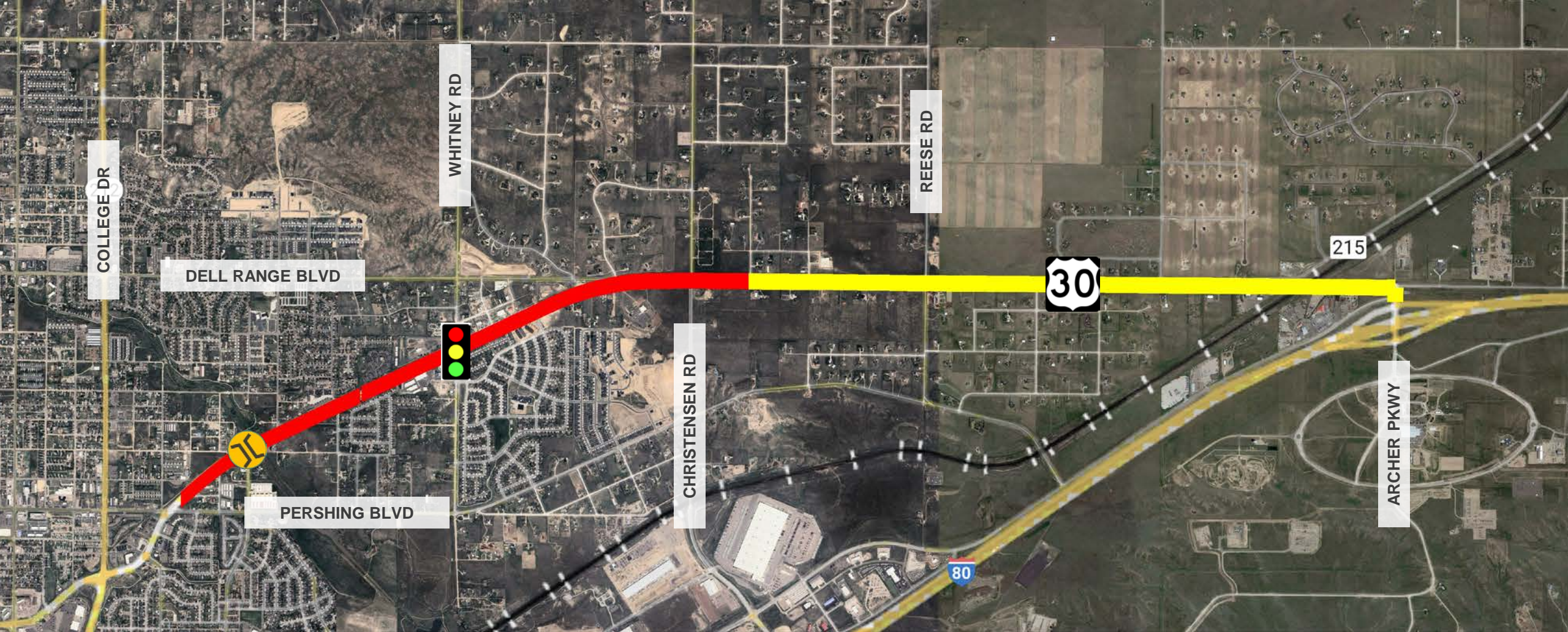
Whitney Road Corridor Plan



AVI, PC
ENGINEERING, PLANNING, SURVEYING
1103 OLD TOWN LANE SUITE 101, CHEYENNE, WY 82009
WWW.AVIPC.COM

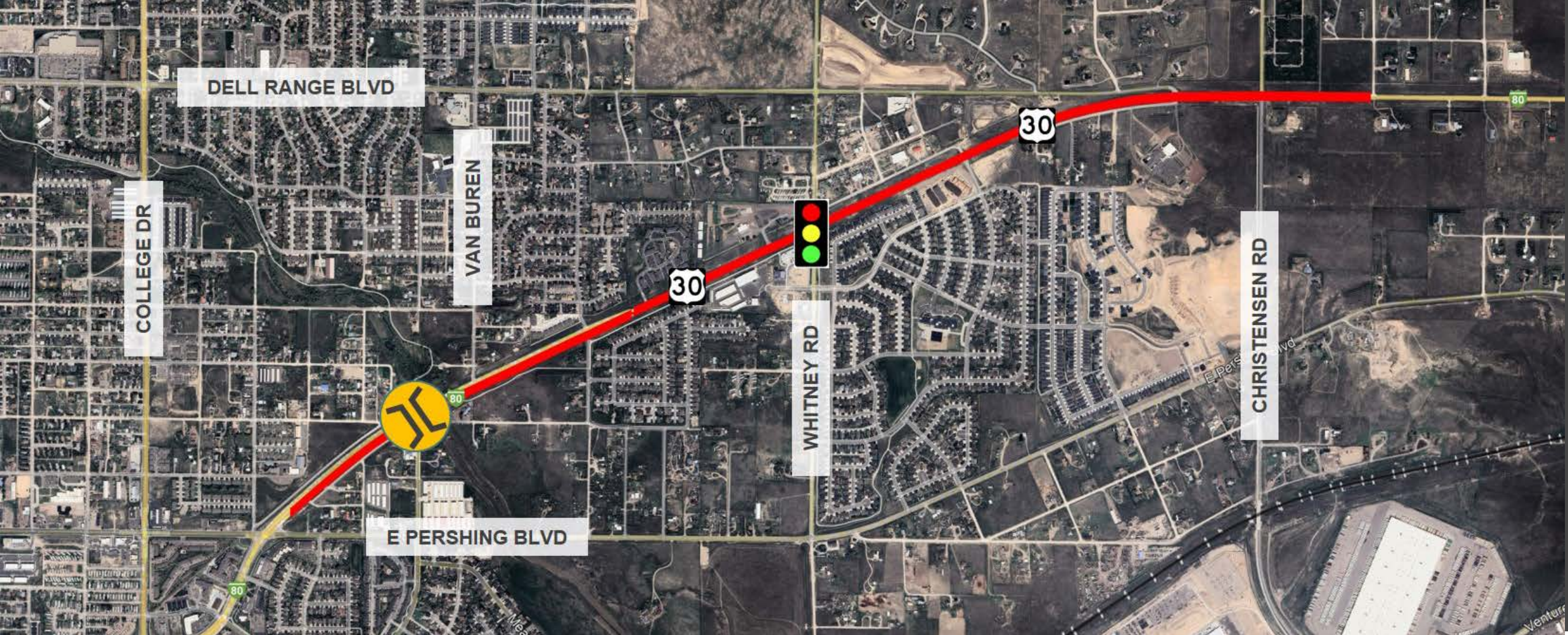
The image shows the cover of a report titled "Whitney Road Corridor Plan" from August 2020. It features a photograph of a road winding through a hilly, semi-arid landscape with a white SUV driving on it. The Cheyenne Metropolitan Planning Organization (MPO) logo is prominently displayed at the top, and contact information for AVI, PC is at the bottom.

**CHEYENNE
METROPOLITAN
PLANNING
ORGANIZATION**



PROJECT CHANGE





PROJECT OVERVIEW

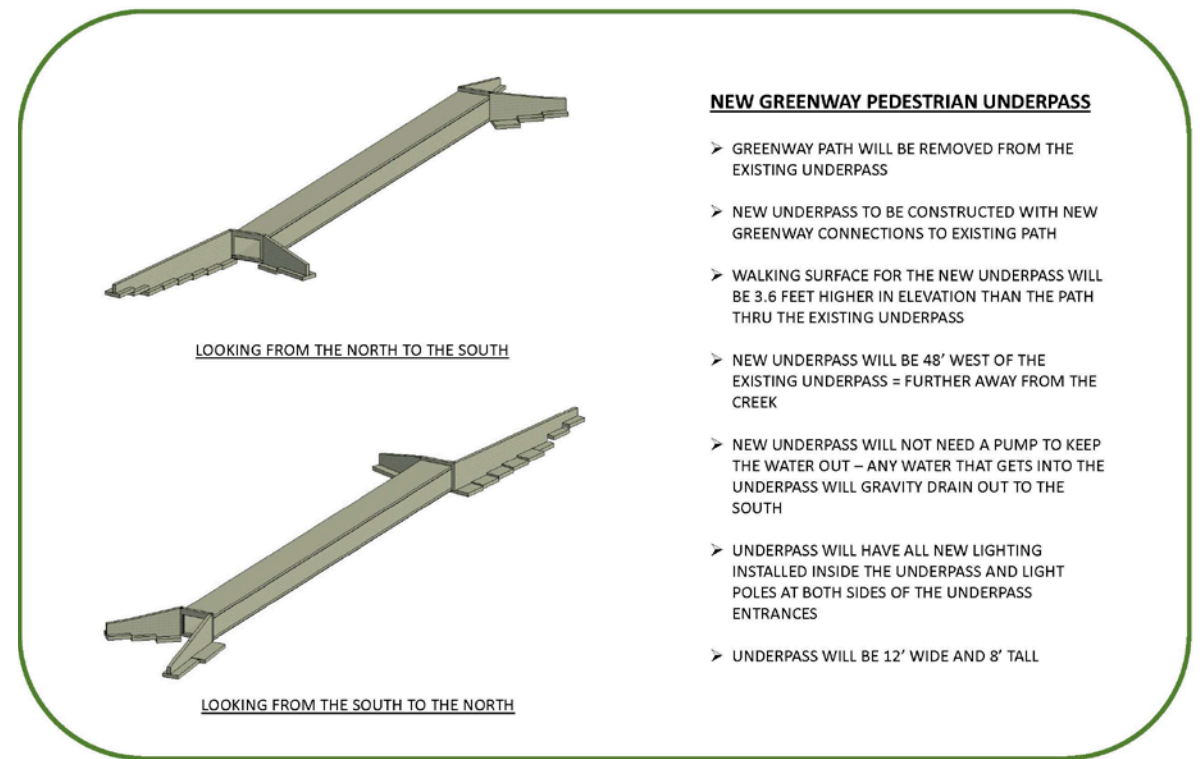
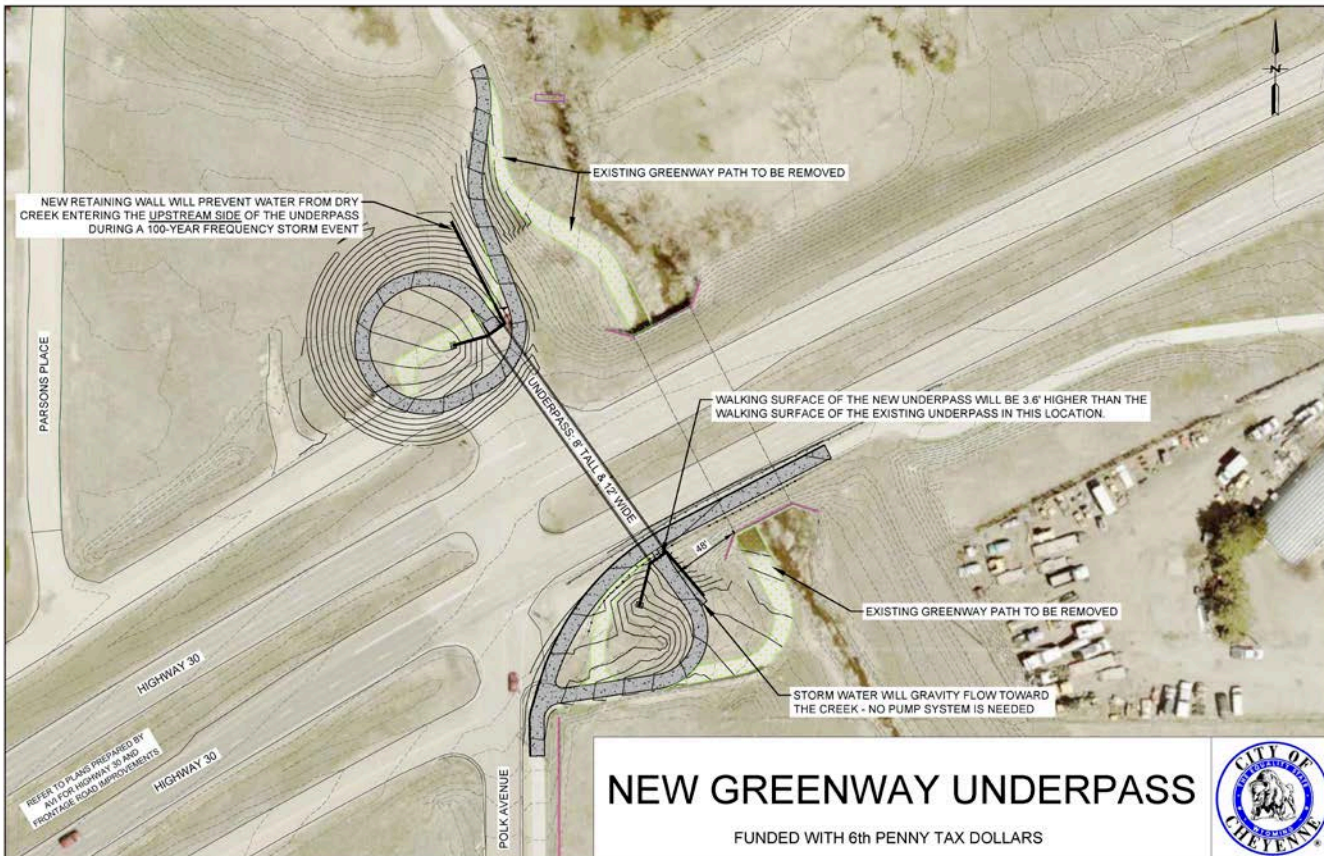
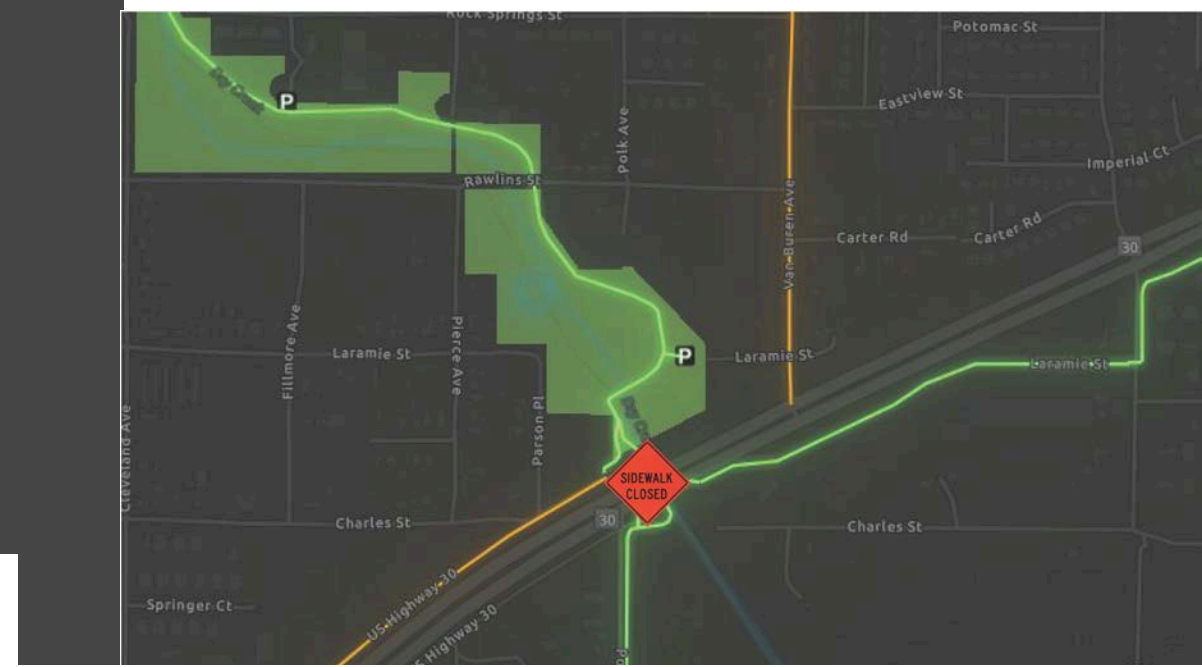


PROJECT UPDATE:

- **WYDOT:**
 - New Greenway Underpass
 - Widen to 5 Lanes
 - Median to improve safety and aesthetics
 - New Signal at US30 and Whitney
 - Intersection lighting
 - Speed limit reduction to 45 MPH for busiest section
- **Reiman Corp. and Aztec Construction:**
 - Construction schedule
 - Construction phasing

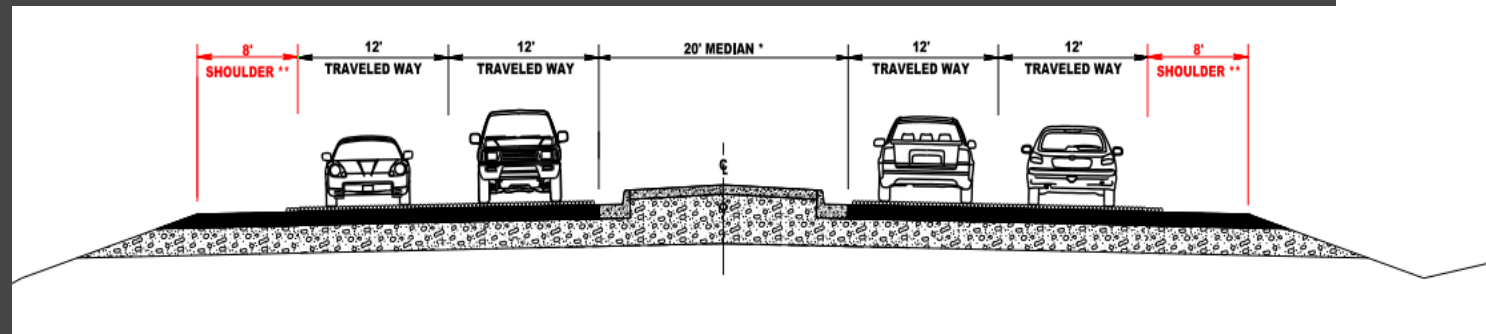
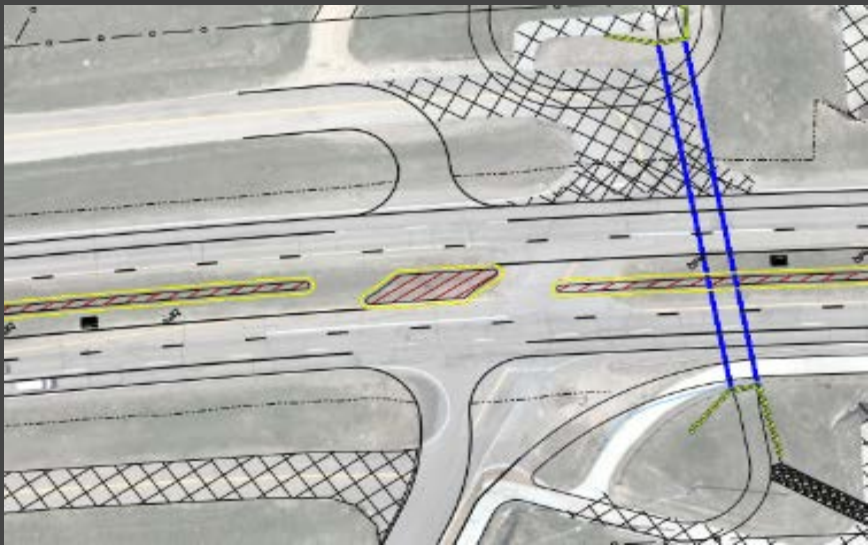
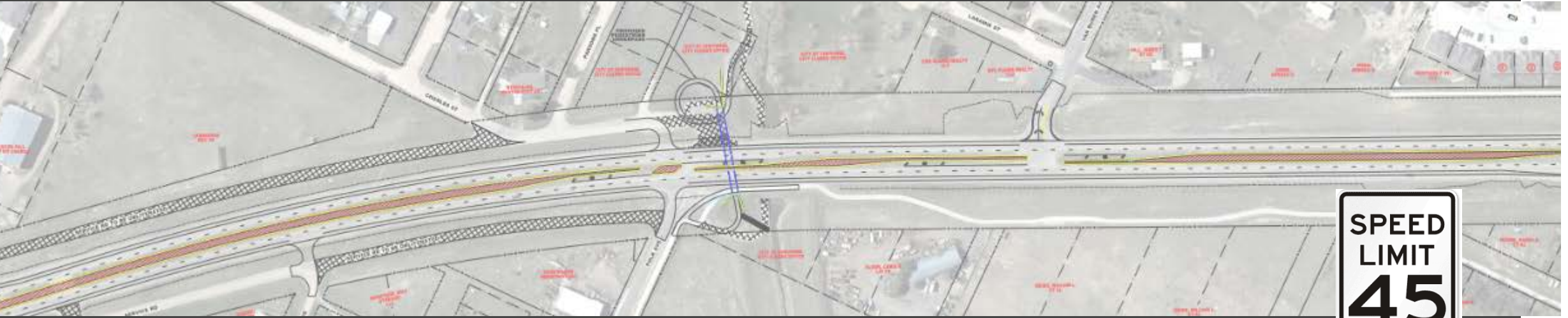


GREENWAY CLOSURE



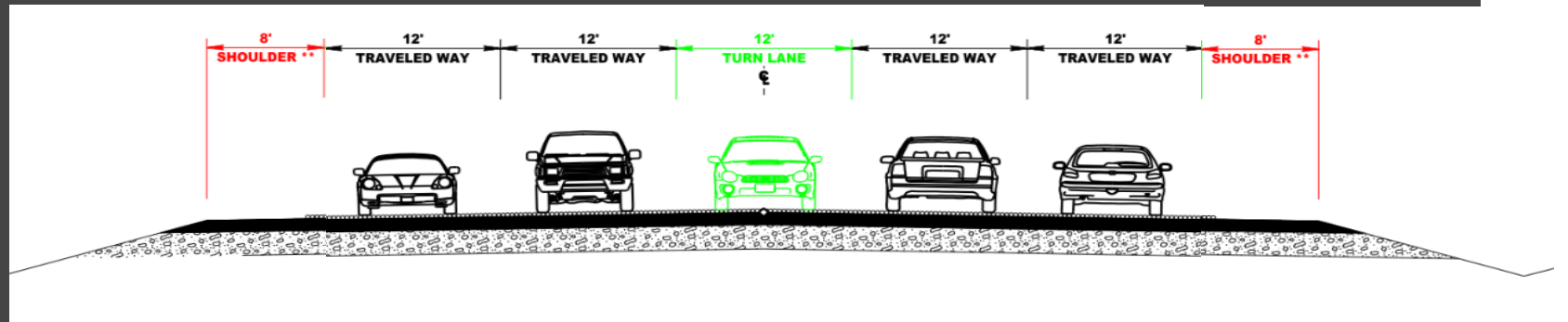
ROADWAY SECTION 1

PERSHING to WHITNEY

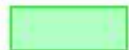


ROADWAY SECTION 2

WHITNEY to CHRISTENSEN



Cheyenne Streets Tunnel/Greenway Phasing Plan



Road Phase 1A February 2024



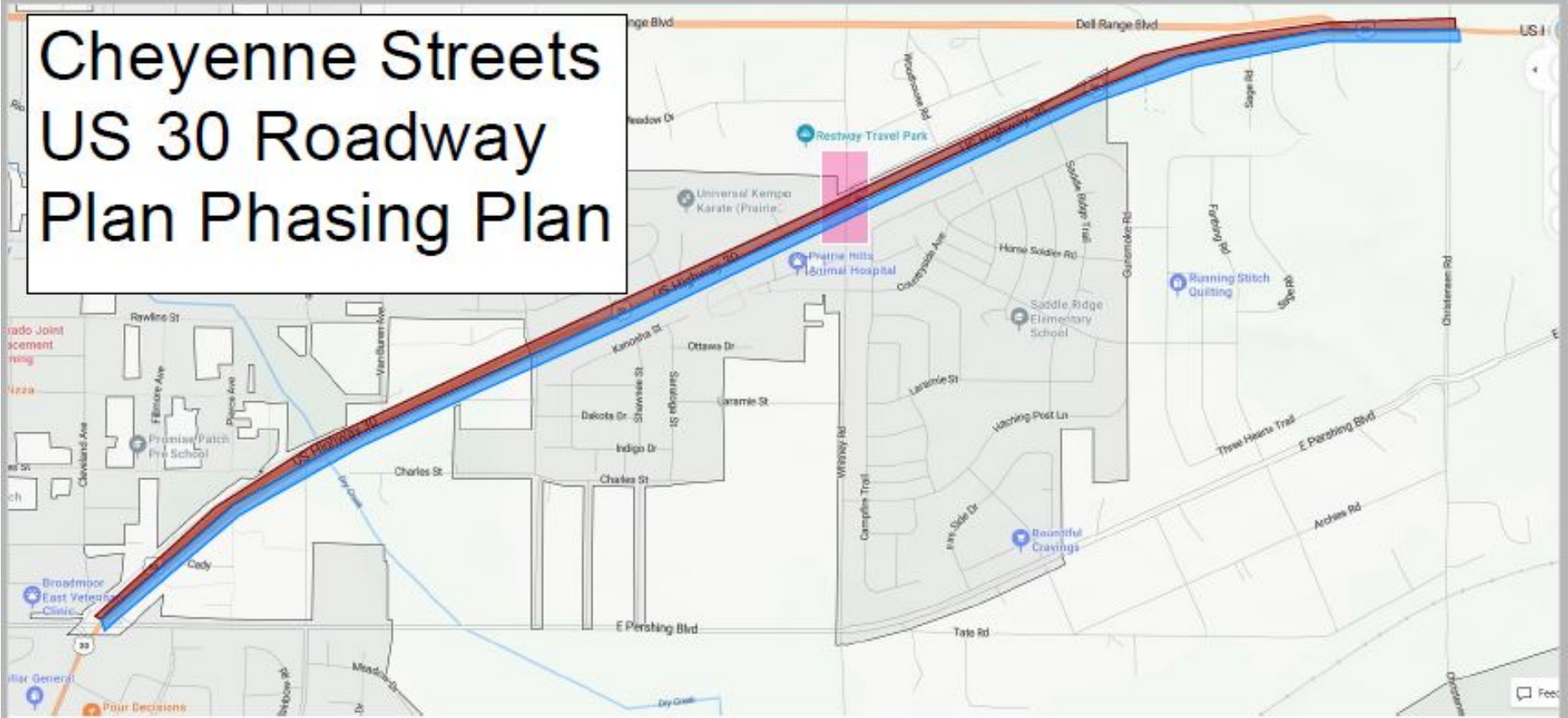
Road Phase 1B February 2024 - March 2024



Greenway Tie In Phase February 2024 - May 2024



Cheyenne Streets US 30 Roadway Plan Phasing Plan



2024 Season

-  Road Phase 2 March 2024 - July 2024
-  Road Phase 3 Aug 2024 - Dec 2024
-  Whitney Traffic Signal and Concrete Work Phase July 2024- Sept 2024

2025 Season

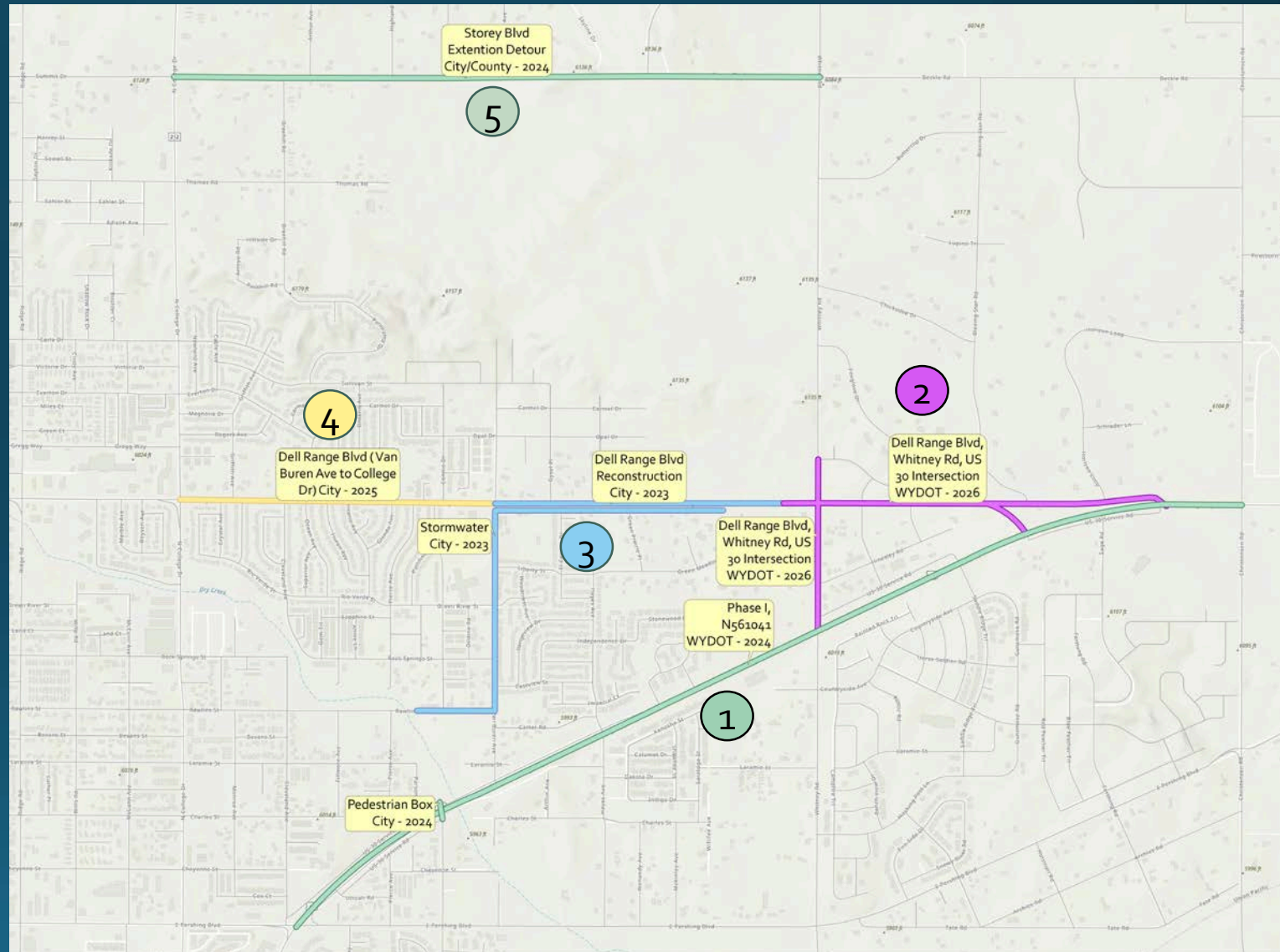
Chip Seal US 30 June 2025 - June 2025



WHAT ARE THE FUTURE EAST CHEYENNE PLANNED PROJECTS?

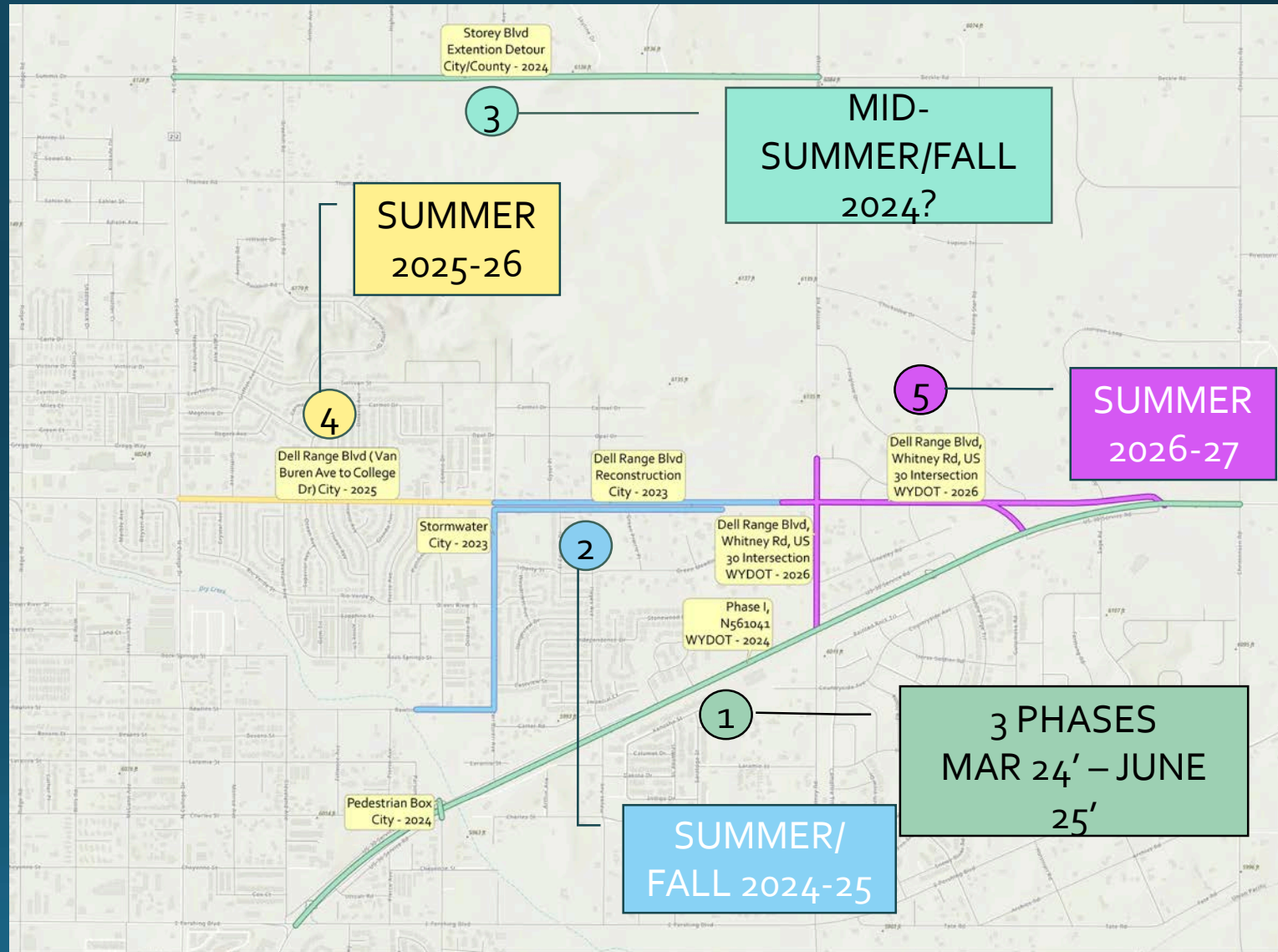
FIVE (5) COMPLEX ROADWAY PROJECTS OVER THE NEXT FOUR YEARS

- 1 US 30 (PERSHING TO CHRISTENSEN ROAD)
- 2 DELL RANGE BLVD, WHITNEY ROAD, AND THE US 30 INTERSECTION PROJECT
- 3 DELL RANGE BLVD. RECONSTRUCTION & VAN BUREN AVE. STORM INTERCEPTOR
- 4 DELL RANGE BLVD. RECONSTRUCTION (COLLEGE DRIVE TO VAN BUREN AVENUE)
- 5 STOREY BLVD. EXTENSION/DETOUR (WHITNEY ROAD TO HIGHLAND (CITY), HIGHLAND TO COLLEGE DRIVE (COUNTY))



WHAT IS THE ANTICIPATED CONSTRUCTION TIMING?

- 1 US 30 (PERSHING TO CHRISTENSEN ROAD)
- 2 DELL RANGE BLVD. RECONSTRUCTION & VAN BUREN AVE. STORM INTERCEPTOR
- 3 STOREY BLVD. EXTENSION/ DETOUR (WHITNEY ROAD TO HIGHLAND, HIGHLAND TO COLLEGE DRIVE)
- 4 DELL RANGE BLVD. RECONSTRUCTION (COLLEGE DRIVE TO VAN BUREN AVENUE)
- 5 DELL RANGE BLVD, WHITNEY ROAD, AND THE US 30 INTERSECTION PROJECT



HOW ARE THESE PROJECTS DEPENDENT?

MUTUAL NEEDS

- STORM CONVEYANCE CAPACITY
- WATER
- SEWER
- DETOUR
- VEHICULAR/PEDESTRIAN CONNECTIVITY

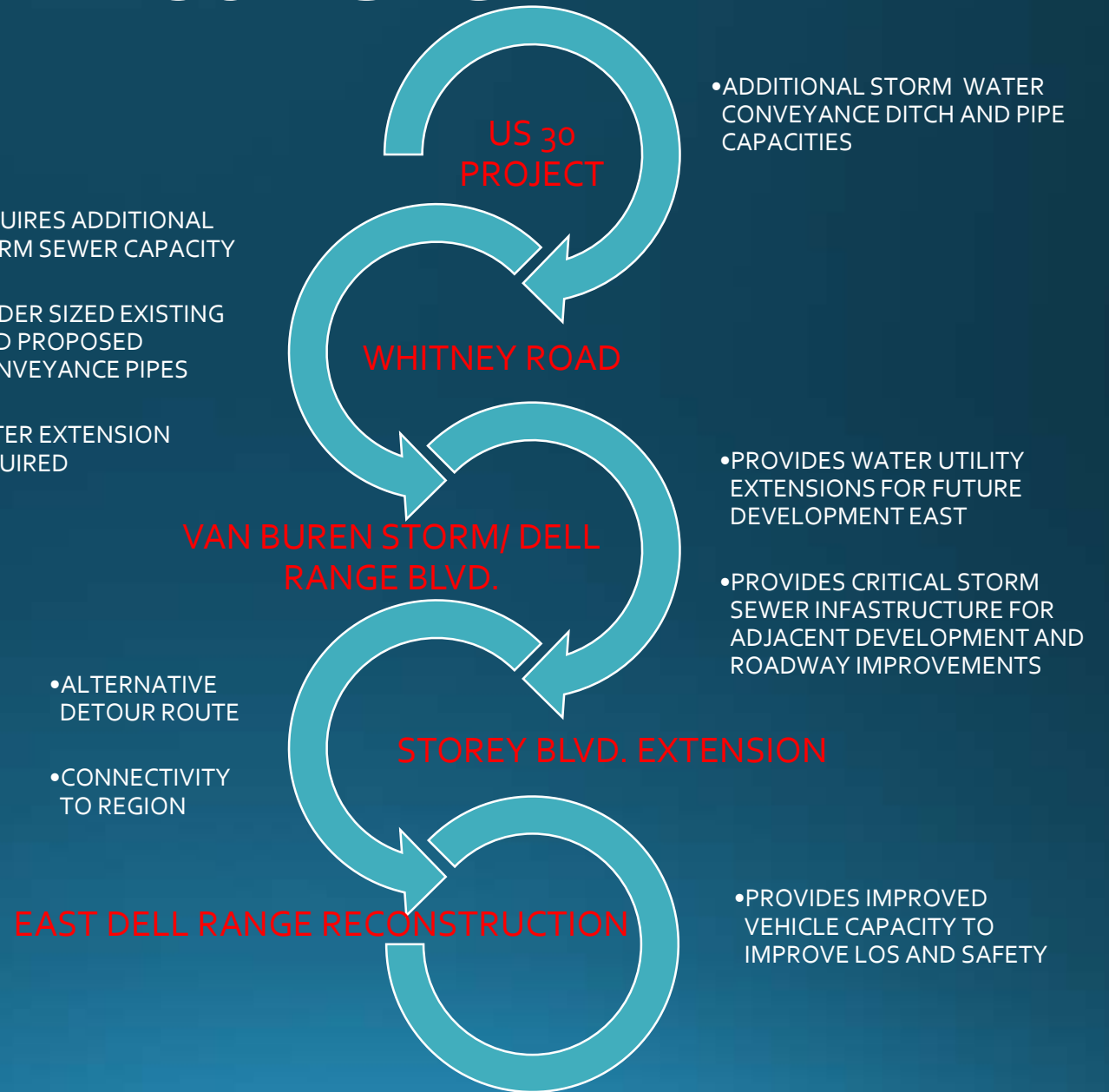
- REQUIRES ADDITIONAL STORM SEWER CAPACITY
- UNDER SIZED EXISTING AND PROPOSED CONVEYANCE PIPES
- WATER EXTENSION REQUIRED

- ALTERNATIVE DETOUR ROUTE
- CONNECTIVITY TO REGION

- ADDITIONAL STORM WATER CONVEYANCE DITCH AND PIPE CAPACITIES

- PROVIDES WATER UTILITY EXTENSIONS FOR FUTURE DEVELOPMENT EAST
- PROVIDES CRITICAL STORM SEWER INFRASTRUCTURE FOR ADJACENT DEVELOPMENT AND ROADWAY IMPROVEMENTS

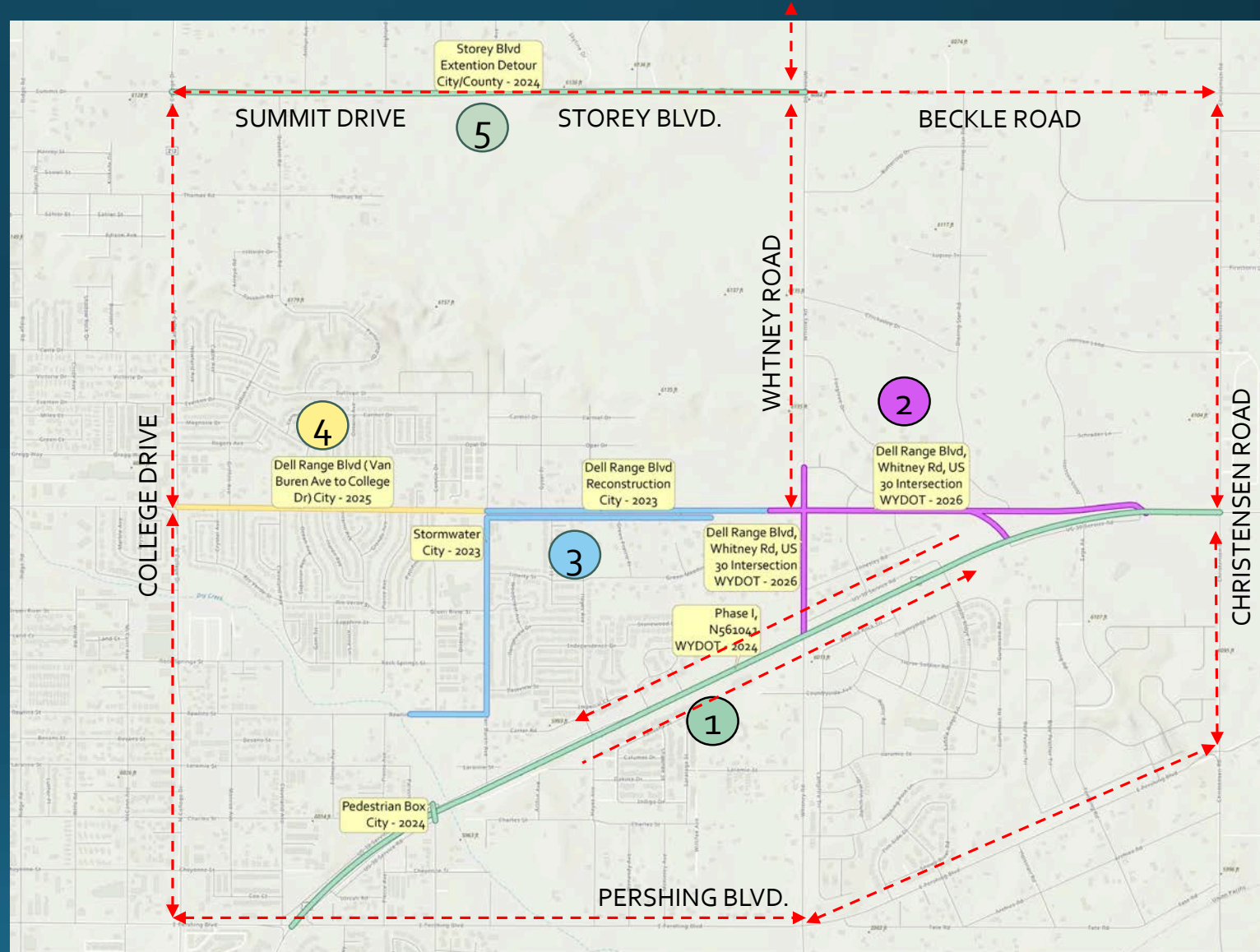
- PROVIDES IMPROVED VEHICLE CAPACITY TO IMPROVE LOS AND SAFETY



WHAT ARE SOME OF THE POTENTIAL DETOUR ROUTES FOR CONSTRUCTION?

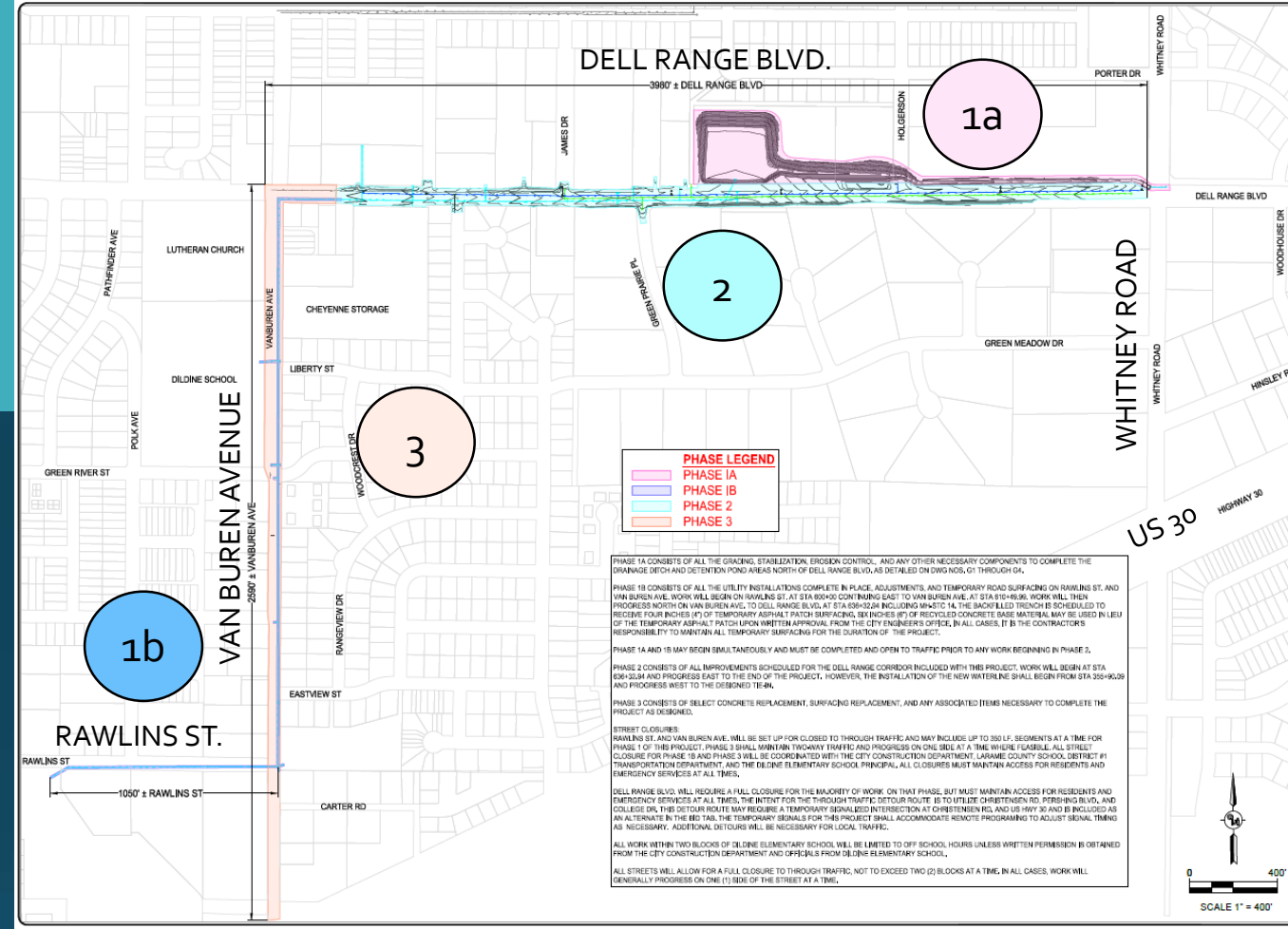
FIVE (5) COMPLEX ROADWAY PROJECTS OVER THE FOUR YEARS

- 1 US 30 (PERSHING TO CHRISTENSEN ROAD)
- 2 DELL RANGE BLVD, WHITNEY ROAD, AND THE US 30 INTERSECTION PROJECT
- 3 DELL RANGE BLVD. RECONSTRUCTION & VAN BUREN AVE. STORM INTERCEPTOR
- 4 DELL RANGE BLVD. RECONSTRUCTION (COLLEGE DRIVE TO VAN BUREN AVENUE)
- 5 STOREY BLVD. EXTENSION/DETOUR (WHITNEY ROAD TO HIGHLAND, HIGHLAND TO COLLEGE DRIVE)



Dell Range Blvd./Van Buren Avenue Storm Sewer 2024

Project Highlights



• Phases

- Phase 1A: Grading temporary ditch and Detention Pond (North of Dell Range Blvd.)
- Phase 1B: Storm Sewer Trunkline and Temporary Surfacing
- Phase 2: Dell Range Corridor Improvements (Water, Sewer, Storm Sewer Trunkline, Roadway Reconstruction)
- Phase 3: Select Concrete/ Final Surfacing Van Buren Avenue

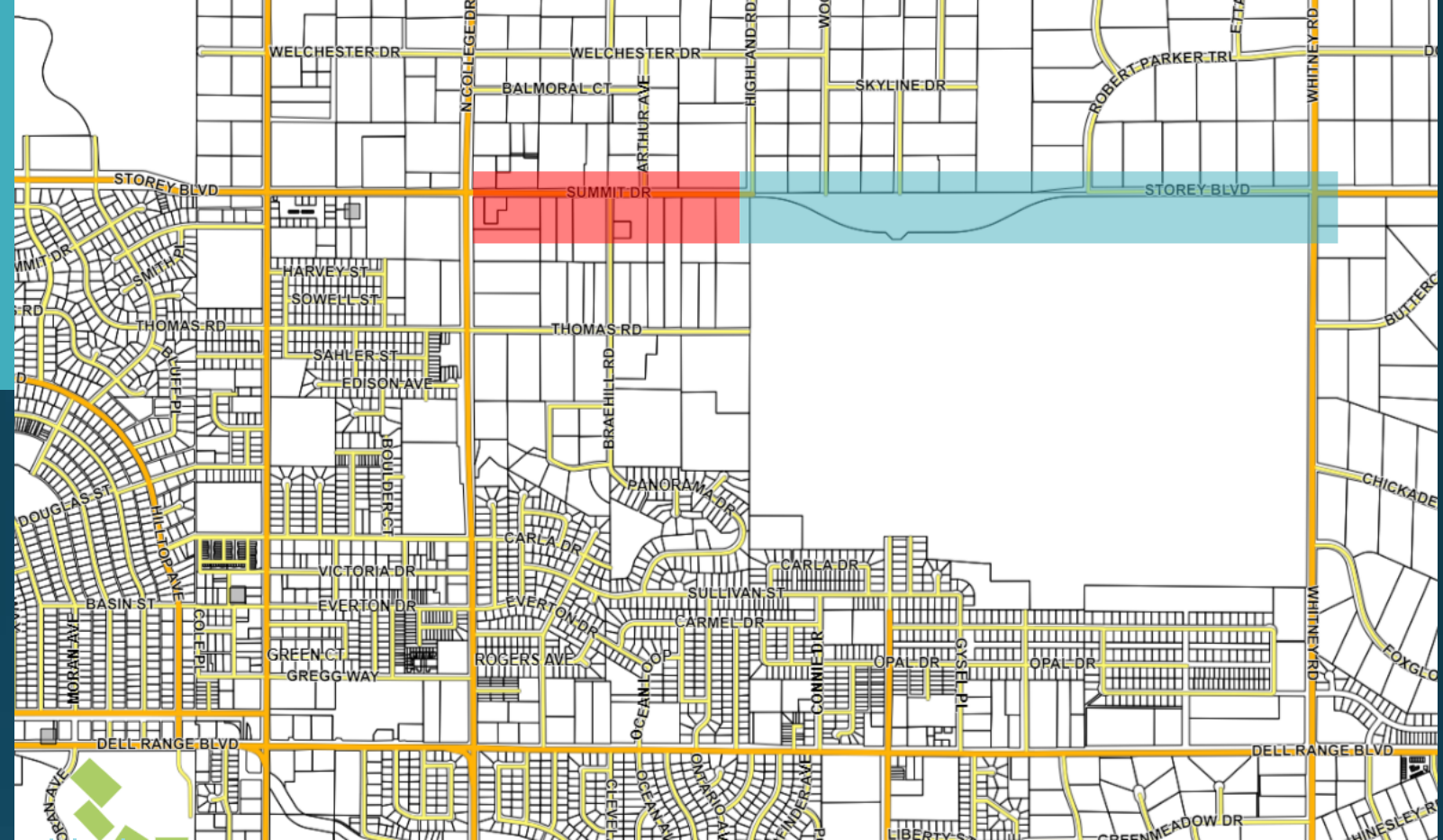
Storey Blvd. (City)

2024

Summit Drive

Drive

(County)



- Limits

- City – Storey Blvd. (Whitney Road to Highland Road)
- Laramie County – Summit Drive (Highland Road to College Drive)

- Primary Components

- Storey Blvd. – Earthwork, Grading Storey Blvd., Crushed Base Surfacing, and Potential Asphalt Paving North half of Road (20’).
- Summit Drive – Detour Improvements possible

Project Highlights

Whitney Road & Dell Range Blvd. 2026



- Limits
 - Whitney Road - ~ 300 feet North of Dell Range to US 30
 - Dell Range Blvd - ~ 700 feet West of Whitney Road to New intersection at US30
 - Realigned Frontage Roads tying into Christensen Road
- Traffic Control Installations
 - Signal at Whitney and Dell Range
 - Signal at Dell Range and US30

Project Highlights

We invite you to join us in the lobby for further discussion or questions.

More info can be found at the website below or by scanning the QR code

https://www.dot.state.wy.us/home/news_info/district_news_info/district_1/us30-whitney-dell-range-project.html

