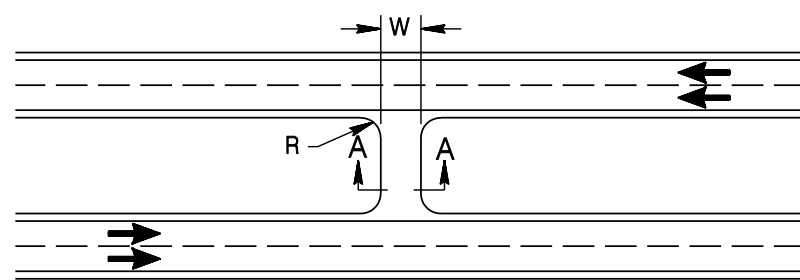


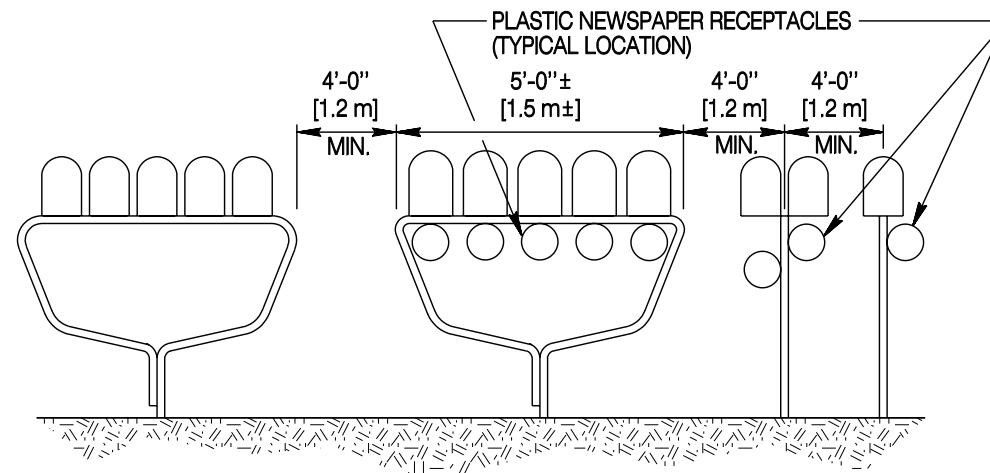
**APPROACHES, MEDIAN CROSSOVERS AND MAILBOX TURNOUTS GUIDE**

PAVED OR GRAVEL SURFACED  $1V:10H$  OR FLATTER

**SECTION A-A**



**MEDIAN CROSSOVER DETAIL**



**SUPPORT SPACING DETAIL**

Revise to fit local conditions as approved by the engineer.

**County Road Approaches**

1.  $W = 24'$  [7.2 m] minimum or wider to existing county road width.
2.  $R = 50'$  [15 m]
3. Pave to Right-of-Way line.

**Field Approaches, Farm Approaches, and Other Minimum Use Approaches**

1.  $W = 16'$  [4.8 m]
2.  $R = 30'$  [10 m]
3. On farm approaches pave to Right-of-Way line, field and minimum use approaches pave around radii.

**Industrial Approaches**

1.  $W =$  as specified.
2.  $R =$  as specified.
3. Pave to Right-of-Way line.
4. Width and radii to meet conditions and traffic type.

**Embankment Slopes for Approaches**

Construct embankment slopes  $1V:8H$  or flatter within the clear zone of the mainline roadway.

**Median Crossovers**

1.  $W = 16$  feet [4.8 m] min.
2.  $R = 30$  feet [9 m] typically.
3. Locations for median crossovers to be justified, documented and approved by the department.
4. Reference AASHTO Greenbook criteria for crossover placement and design.
5. Width and geometry of crossover may need to be adjusted to accommodate a snowplow waiting to merge from median.
6. Place restricted use signage where public is prohibited from use.

**Pipes Under Approaches and Crossovers**

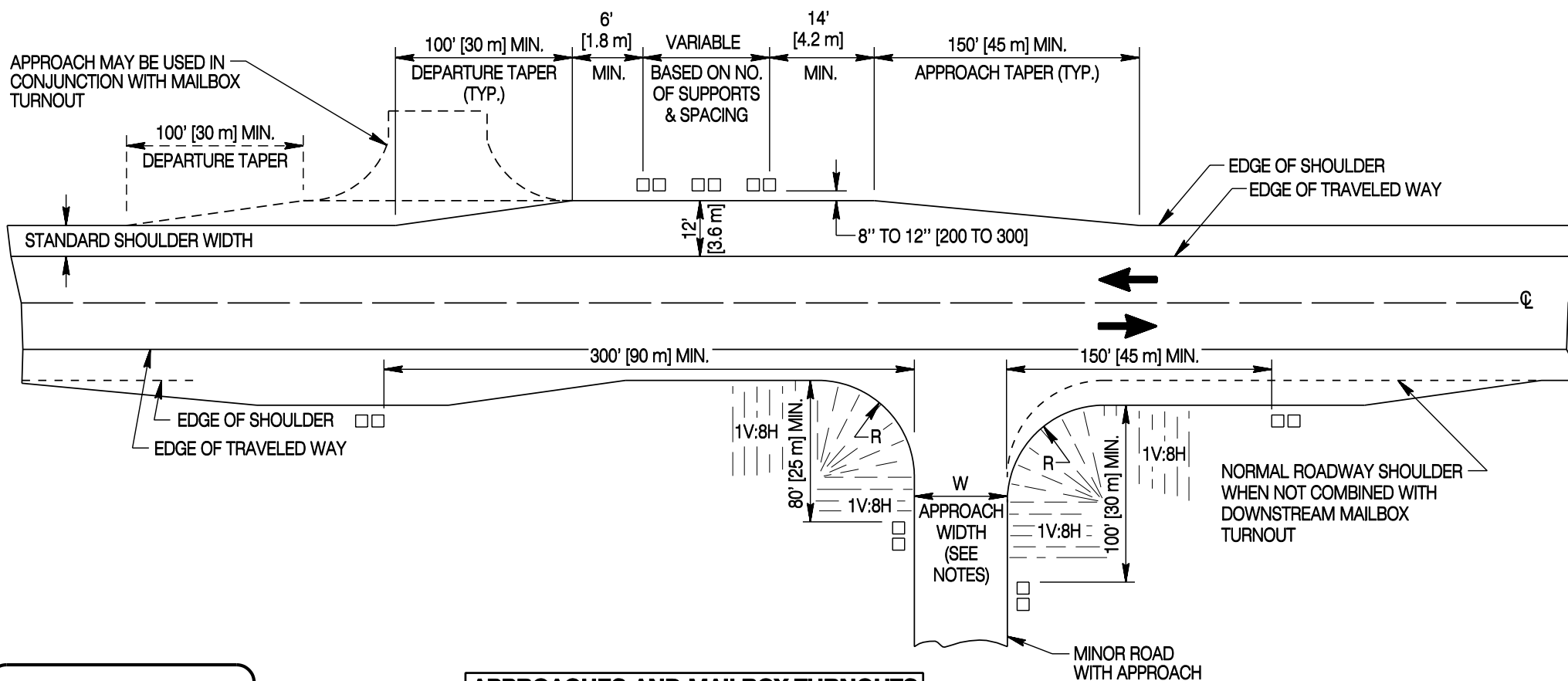
Place pipe ends outside the clear zone, otherwise miter and attach safety grates in accordance with crash-worthy designs.

**Plant Mix Wearing Course / Chip Seal**

Do not place Wearing Course or Chip Seals on approaches unless otherwise shown.

**Location Criteria of Mailbox Turnouts**

1. Safety.
2. Direction of mail route.
3. Landowner convenience.
4. Approach/turning movements.
5. Where possible locate mailboxes together using minimum spacing criteria as shown.



**APPROACHES AND MAILBOX TURNOUTS**

**NOTES FOR MAILBOXES**

1. All hardware to be galvanized.
2. Use only crashworthy supports and mailbox combinations as shown herein or as otherwise approved by FHWA and the engineer.
3. Conform with U.S. Post Office regulations.

Designed by: MAD  
 Drawn by: GLD  
 Checked by: WEBW  
 Previous Dep. No. 202-01C

**MAILBOX TURNOUT LAYOUTS AND GENERAL APPROACH INFORMATION**

Note: Units shown in brackets [ ] are metric and are in millimeters (mm) unless other units are shown.



**MAILBOX INSTALLATIONS, APPROACHES AND MEDIAN CROSSOVERS**

STANDARD PLAN

STANDARD PLAN NUMBER

**202-1**

SHEET 1 of 5

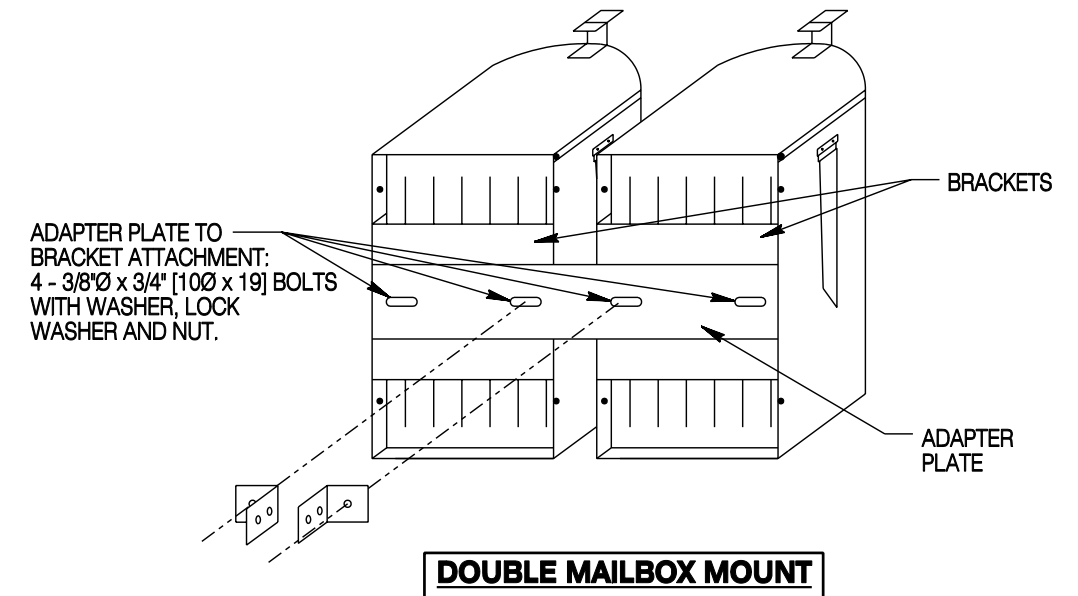
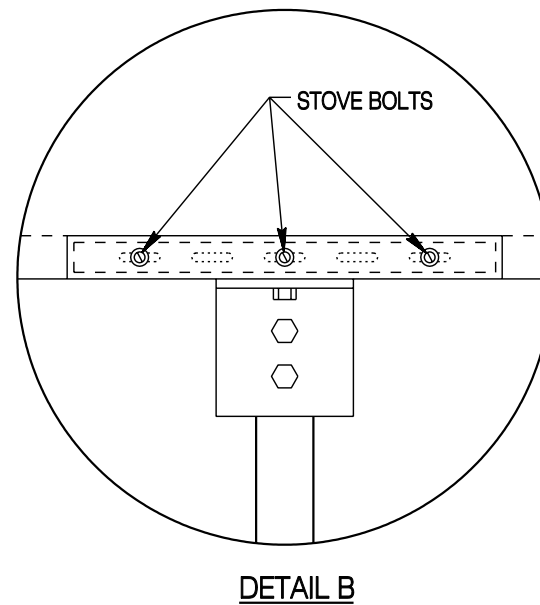
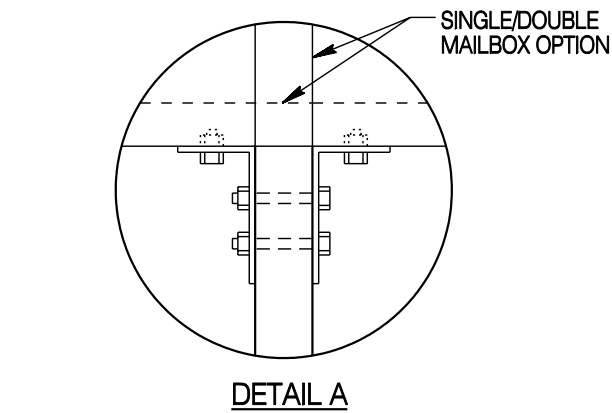
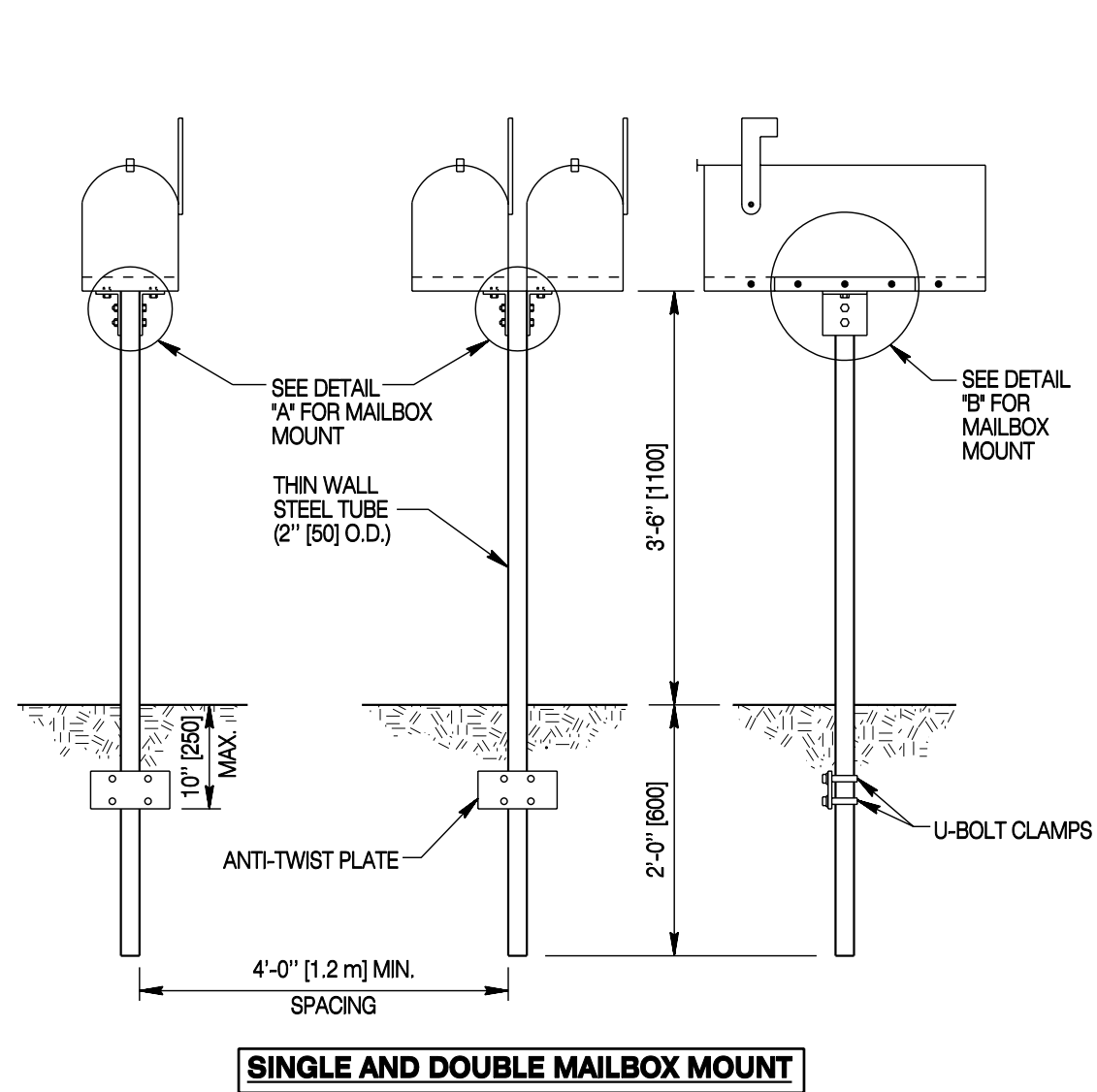
Issued by: ENGINEERING SERVICES

Date Issued: MARCH, 2004

FILE: J:\Dual\_Stal2021\_01.dgn

**NOTES:**

1. For bolt sizes see standard mailbox attachment details.
2. Single mailbox mounts can accept size 1, 1A and 2 mailboxes.  
Double mailbox mounts can only accept size 1 and 1A mailboxes.



Designed by: MAD  
 Drawn by: GLD  
 Checked by: WBW  
 Previous Dwg. No. 202-01C

**SINGLE AND DOUBLE MAILBOX MOUNTS**

Note: Units shown in brackets [ ] are metric and are in millimeters (mm) unless other units are shown.



**MAILBOX INSTALLATIONS, APPROACHES AND MEDIAN CROSSOVERS**

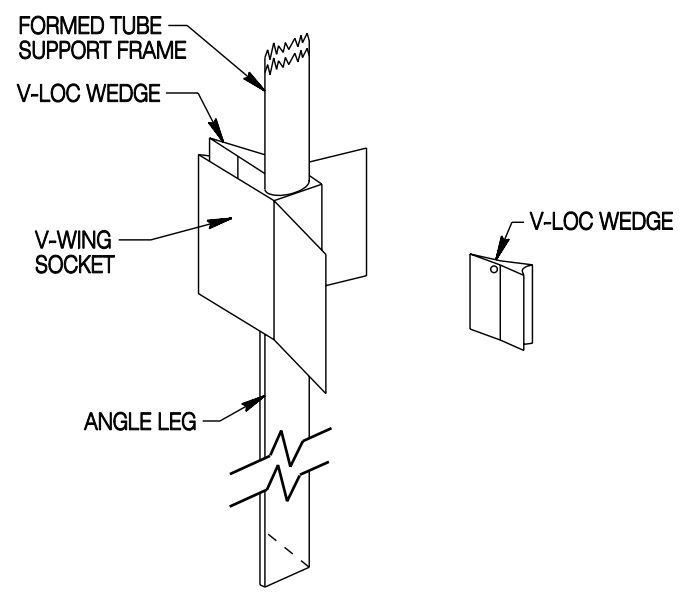
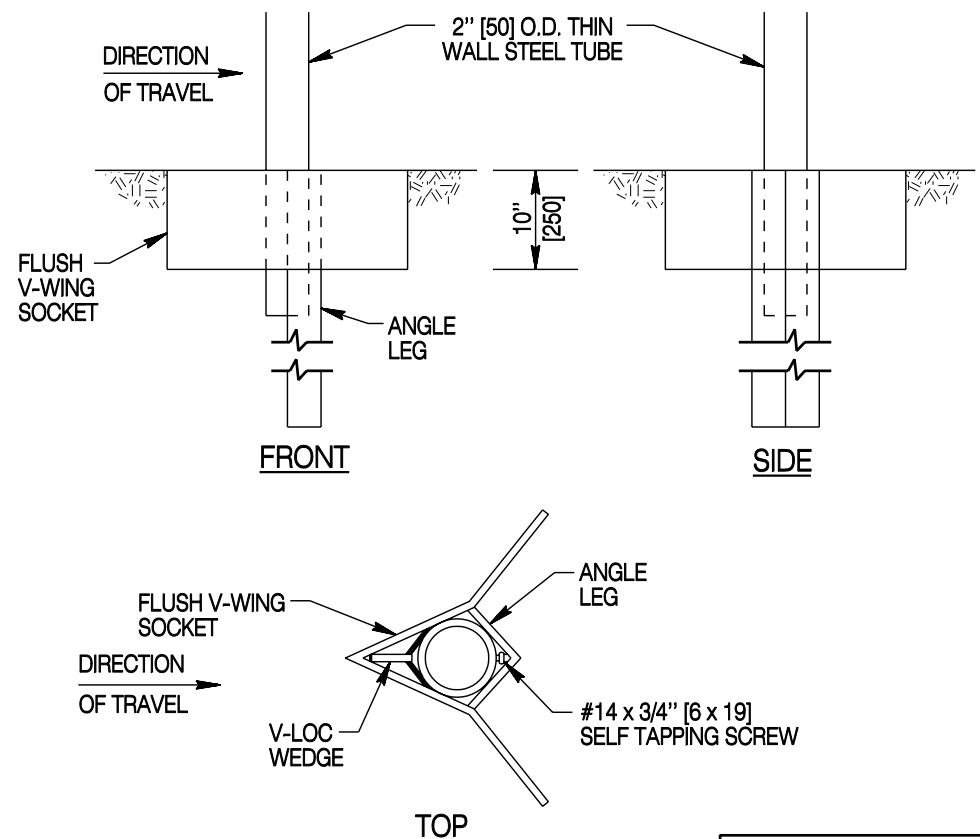
STANDARD PLAN

STANDARD PLAN NUMBER  
**202-1**

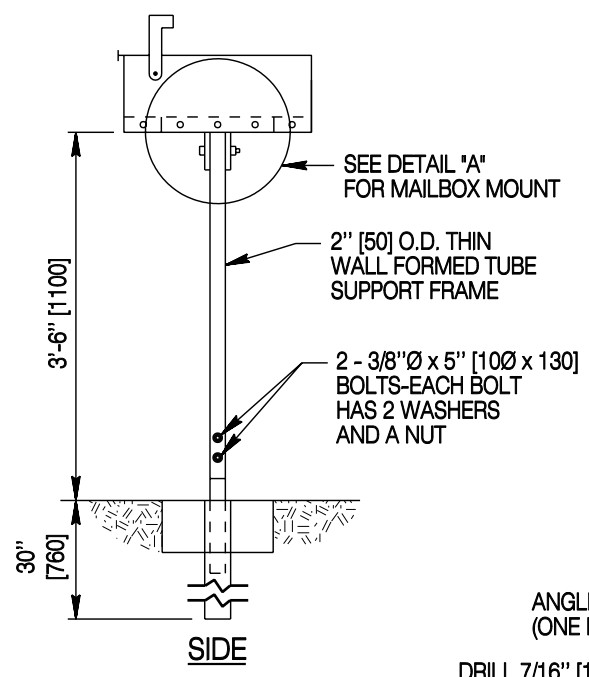
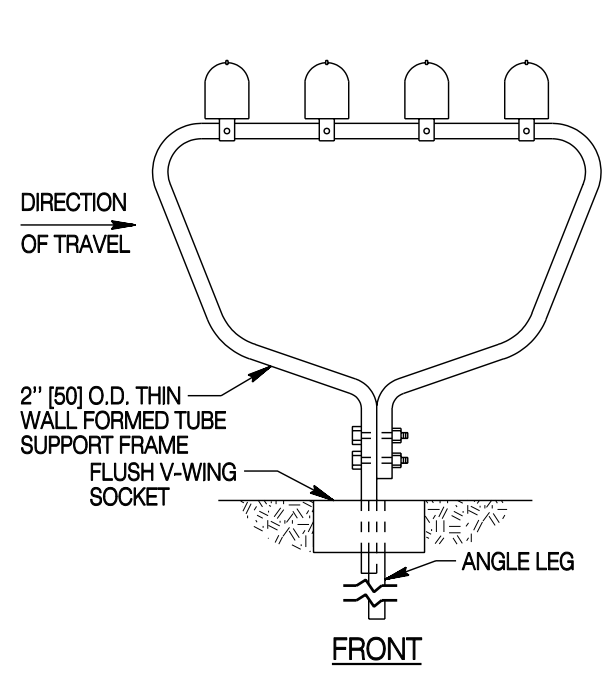
SHEET 2 of 5

Issued by: ENGINEERING SERVICES  
 Date Issued: MARCH, 2004

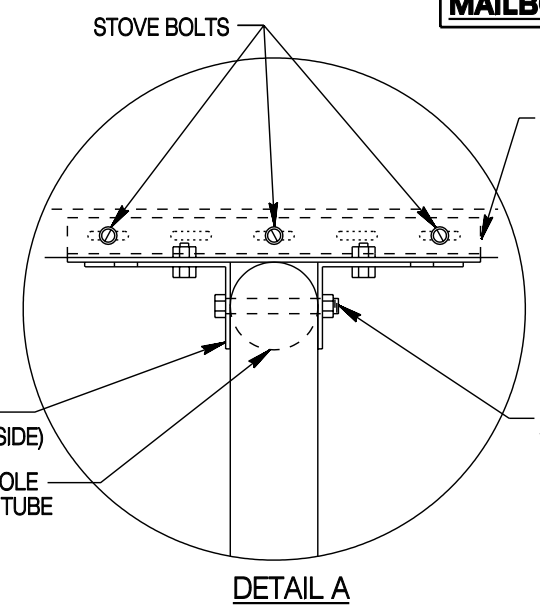
FILE: J:\Dual\_Stn\2021\_02.dgn



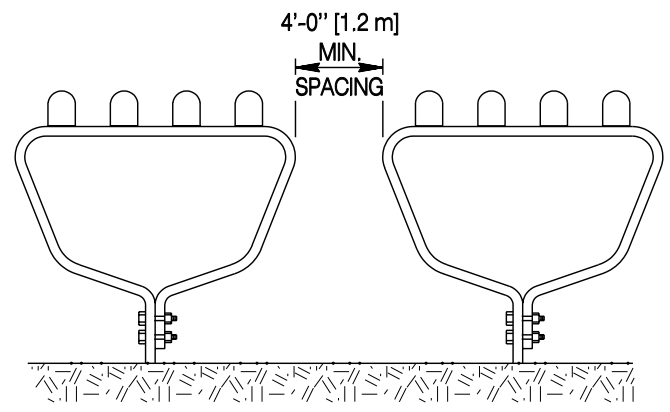
**V-LOC SUPPORT/FOUNDATION**



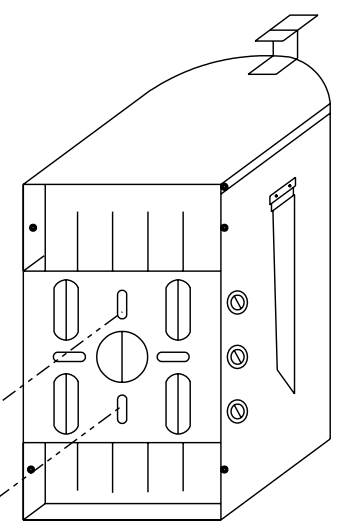
**MULTIPLE MAILBOX MOUNT**



**DETAIL A**



**TWO OR MORE MULTIPLE MAILBOX INSTALLATIONS**



ANGLE TO BRACKET ATTACHMENT:  
TWO - 3/8"Ø X 3/4" [10 Ø x 20] BOLT  
WITH LOCK WASHER AND NUT.

**ANGLE TO BRACKET ATTACHMENT FOR MULTIPLE MAILBOX MOUNT**

(SIZE NO. 1 SHOWN)

**NOTES:**

1. Support frame to be 2" [50] O.D., 14 gauge [1.9 thick] steel formed tube. Patented supplier is Foresight Products, Inc.
2. Maximum number and type of mailboxes per multiple support:
  - a. Size No. 1 box - 5 boxes per support.
  - b. Size No. 2 box - 3 boxes per support.
  - c. Combination - 4 boxes per support - only 2 No. 2 boxes allowed in the combination.
3. V-wing socket and angle leg may be modified when erected in concrete or plant mix paved areas.
4. See details for single, double and multiple installations for mailbox attachment bolts.

Designed by: MAD	<b>MULTIPLE MAILBOX MOUNTS</b>
Drawn by: GLD	
Checked by: VIBW	
Previous Des. No. 202-01C	
Note: Units shown in brackets [ ] are metric and are in millimeters (mm) unless other units are shown.	

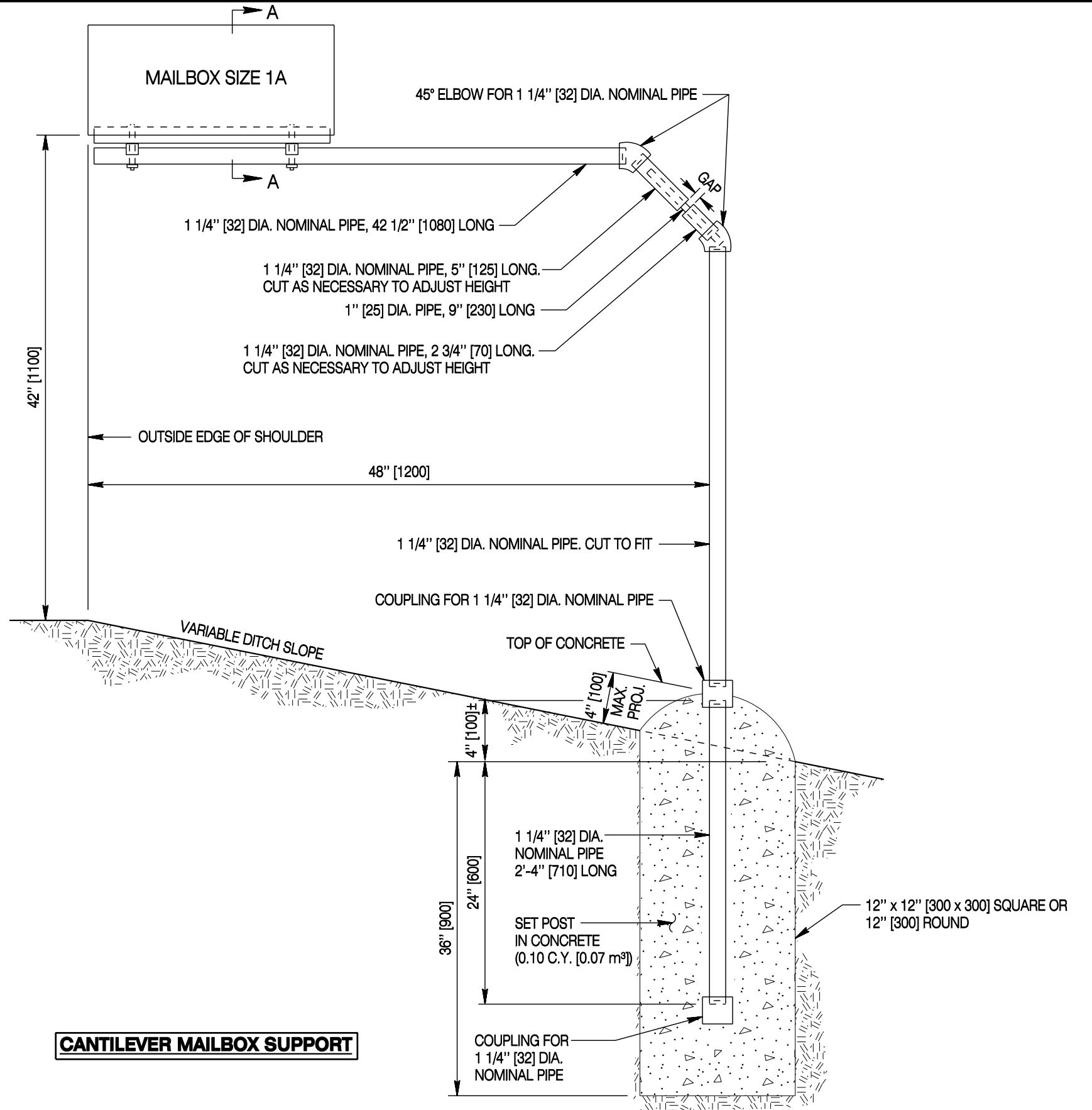
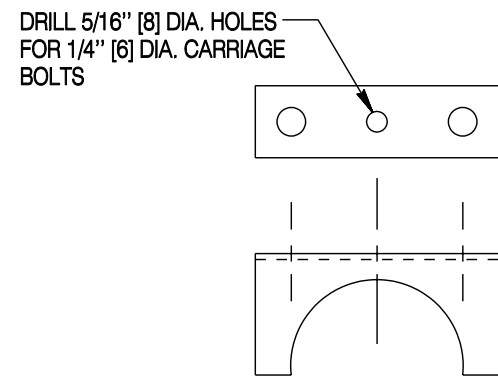
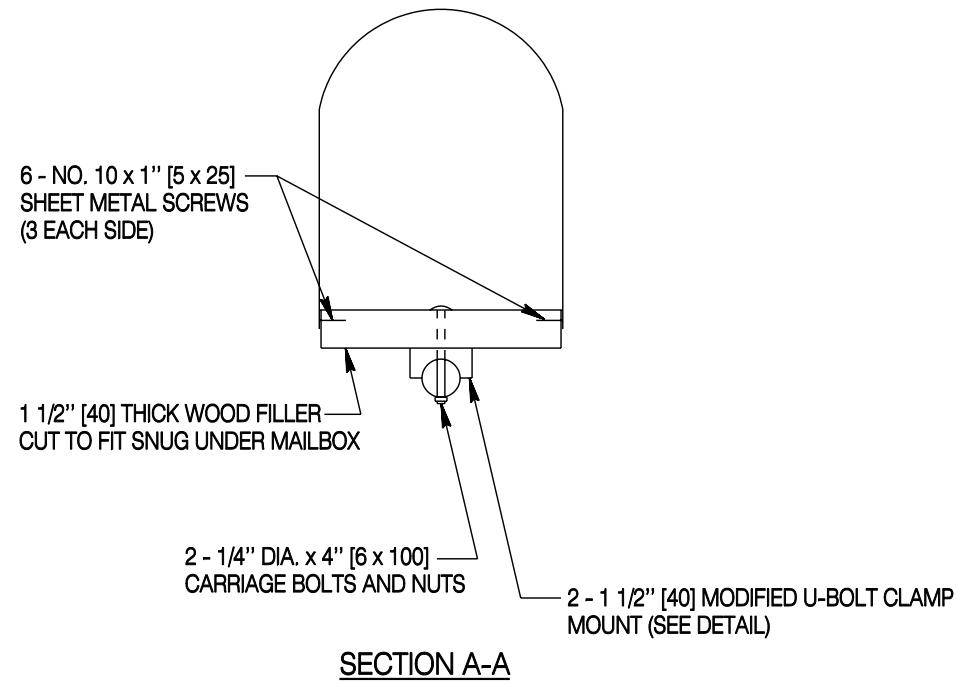
**WYOMING DEPARTMENT OF TRANSPORTATION**

**MAILBOX INSTALLATIONS, APPROACHES AND MEDIAN CROSSOVERS**  


---

**STANDARD PLAN**

STANDARD PLAN NUMBER
<b>202-1</b>
SHEET 3 of 5
Issued by: ENGINEERING SERVICES
Date Issued: MARCH, 2004
FILE: J:\Dual_Std\2021_03.dgn



Designed by: MAD  
 Drawn by: GLD  
 Checked by: VIBW  
 Previous Dwg. No. 202-01C

**CANTILEVER MOUNTED MAILBOX**

Note: Units shown in brackets [ ] are metric and are in millimeters (mm) unless other units are shown.



**MAILBOX INSTALLATIONS, APPROACHES AND MEDIAN CROSSOVERS**

STANDARD PLAN

STANDARD PLAN NUMBER

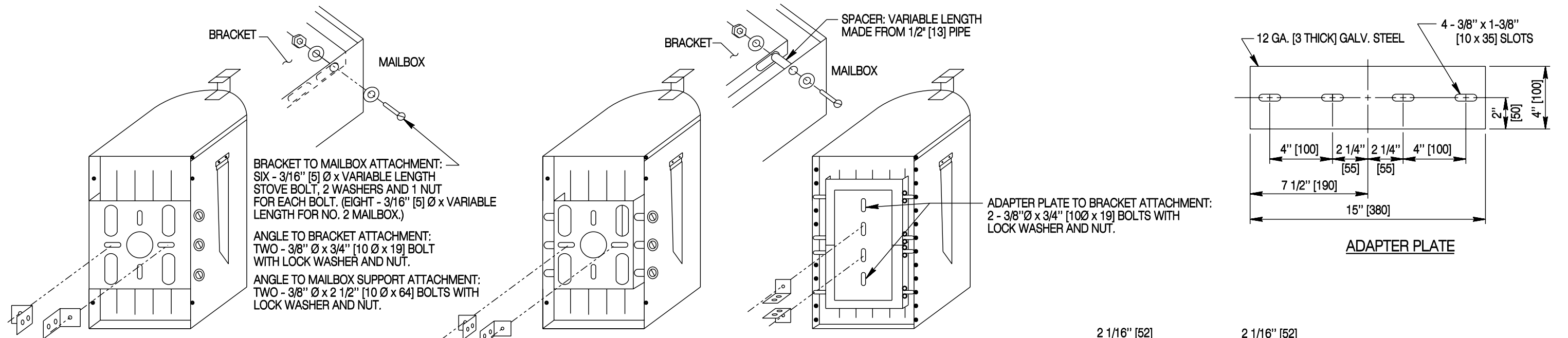
**202-1**

SHEET 4 of 5

Issued by: ENGINEERING SERVICES

Date Issued: MARCH, 2004

FILE: j:\Stan\Dual\_Std\2021\_04.dgn

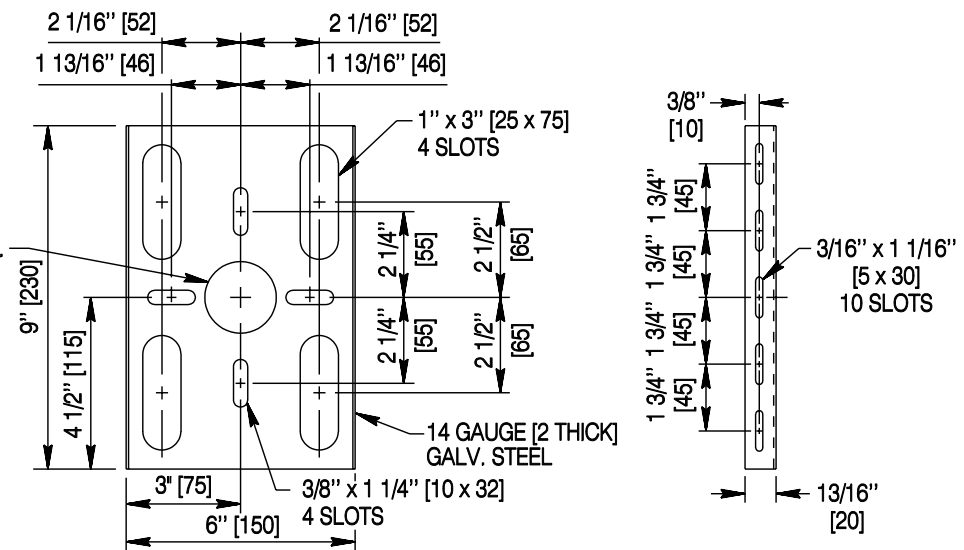


**SIZE NO. 1 MAILBOX**  
19" x 6 1/2" x 8 1/2" [480 x 170 x 220]

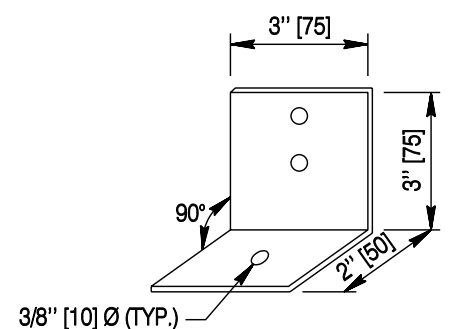
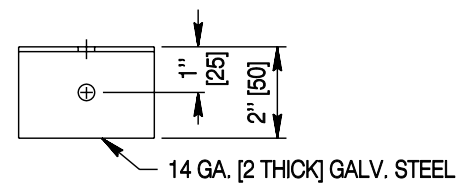
**SIZE NO. 1A MAILBOX**  
21" x 8" x 10 1/2" [530 x 200 x 270]  
(FOR ATTACHMENT HARDWARE SEE NOTES FOR SIZE NO. 1 MAILBOX)

**SIZE NO. 2 MAILBOX**  
23 1/2" x 11 1/2" x 13 1/2" [600 x 290 x 340]  
(FOR ATTACHMENT HARDWARE SEE NOTES FOR SIZE NO. 1 MAILBOX)

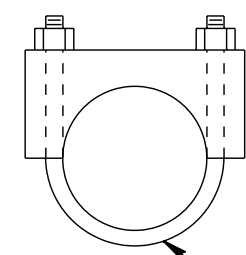
**STANDARD MAILBOX ATTACHMENT DETAILS FOR SINGLE, DOUBLE AND MULTIPLE INSTALLATIONS**



**BRACKET**

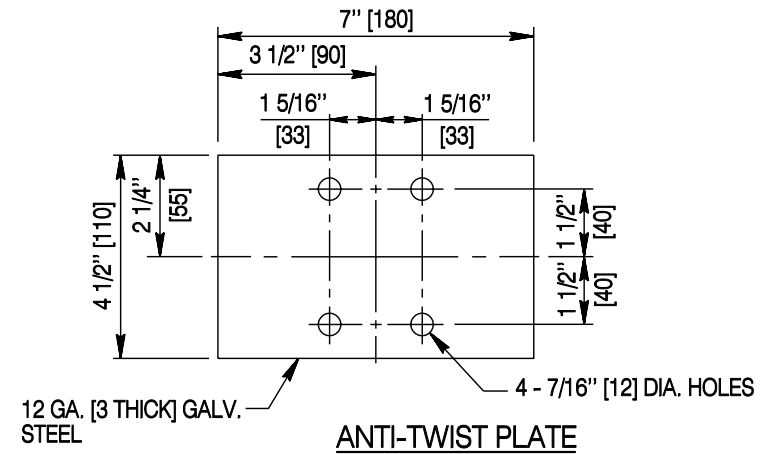


**ANGLE**



**U-BOLT CLAMP**

NOMINAL 1 7/8" [50] Ø FOR SINGLE, DOUBLE AND MULTIPLE INSTALLATIONS (1 1/2" [38] FOR CANTILEVER)



**ANTI-TWIST PLATE**

Designed by: MAD  
Drawn by: GLD  
Checked by: VEBW  
Previous Des. No. 202-01C

**MAILBOX HARDWARE & ATTACHMENT DETAILS**

Note: Units shown in brackets [ ] are metric and are in millimeters (mm) unless other units are shown.



**MAILBOX INSTALLATIONS, APPROACHES AND MEDIAN CROSSOVERS**

**STANDARD PLAN**

STANDARD PLAN NUMBER  
**202-1**  
SHEET 5 of 5  
Issued by: ENGINEERING SERVICES  
Date Issued: MARCH, 2004  
FILE: j:\StanDual\_Std\2021\_05.dgn