

★ ★ OPTIONAL AS DIRECTED BY ENGINEER

⊗ USE ONLY IF NO PREVIOUS "ROAD WORK AHEAD" SIGNS WITHIN 1 MILE [1.6 km], OR IF OUTSIDE OF THE REGULAR CONSTRUCTION AREA.

Designed by: TRAFFIC
Drawn by: JTG
Checked by: TRAFFIC
Previous Dwg. No. 703-3H

TYPICAL TRAFFIC CONTROL FOR
CONSTRUCTION MEDIAN TURNAROUND

Note: Units shown in brackets [] are metric and are in millimeters (mm) unless other units are shown.



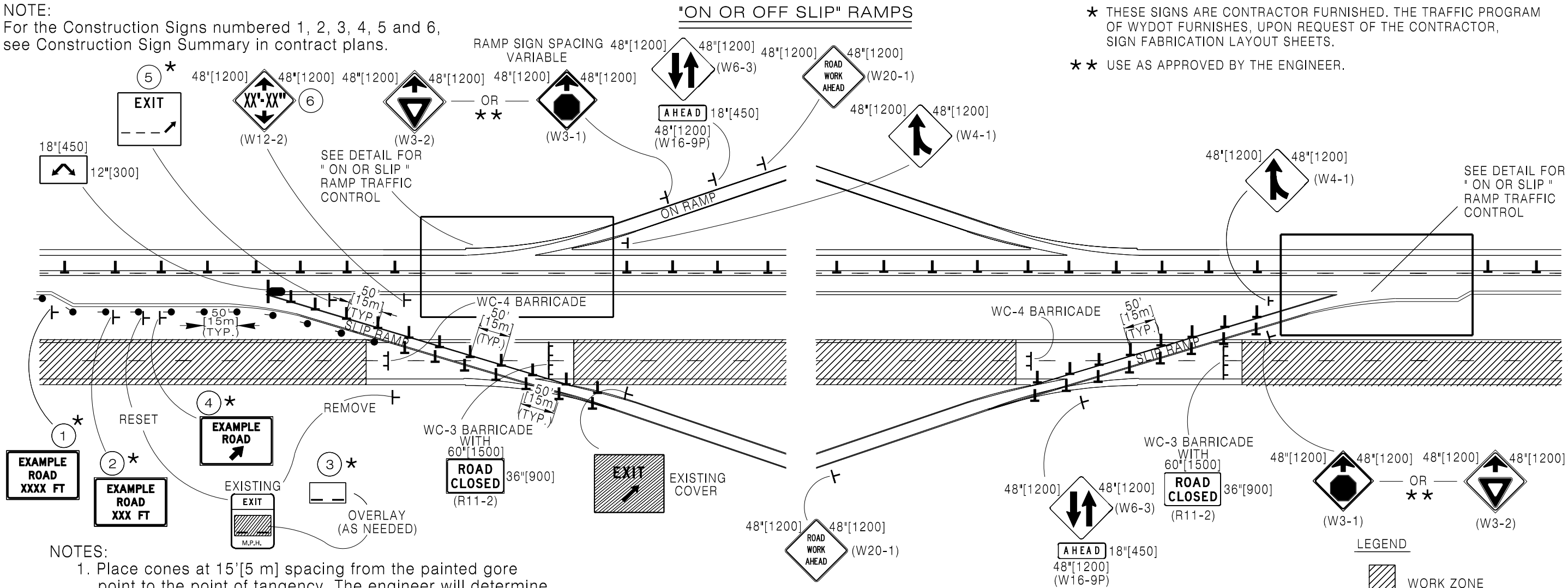
CONSTRUCTION TRAFFIC
CONTROL FOUR LANE

STANDARD PLAN

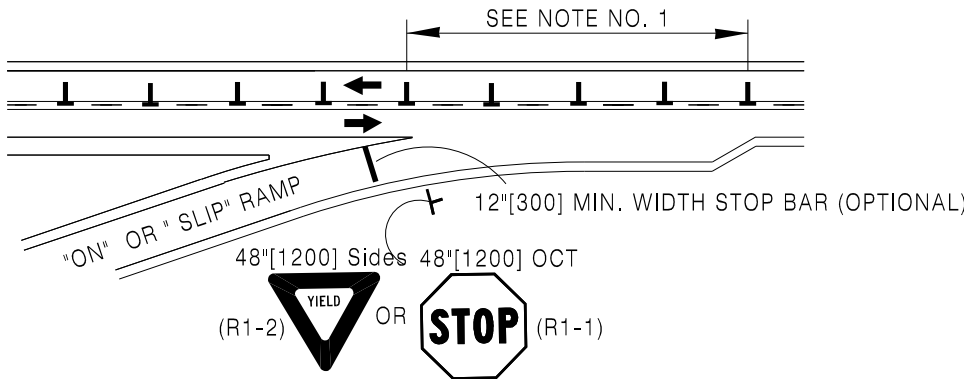
STANDARD PLAN NUMBER
703-3I
SHEET 1 of 12
Issued by: TRAFFIC PROGRAM
Date Issued: FEBRUARY, 2026



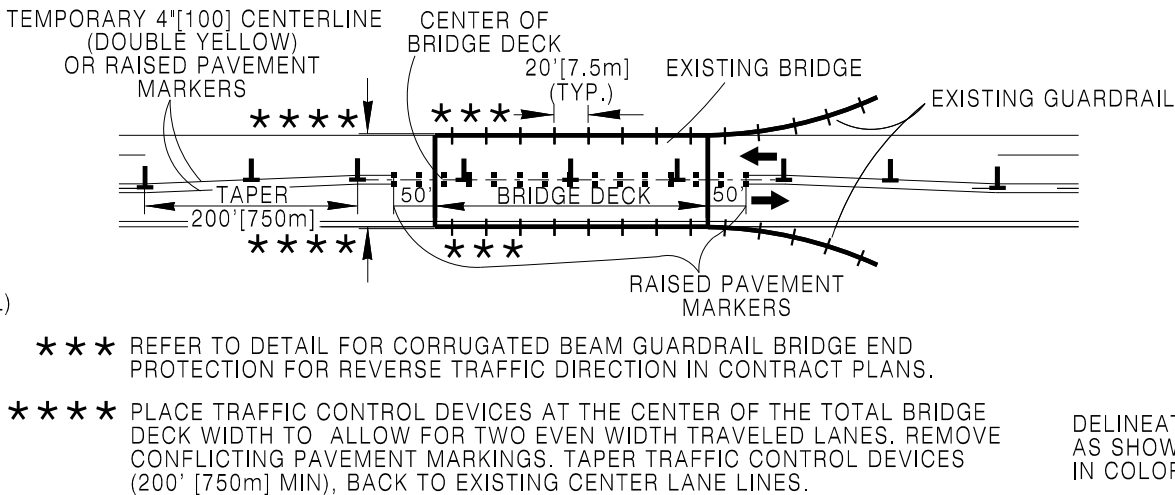
NOTE:
For the Construction Signs numbered 1, 2, 3, 4, 5 and 6,
see Construction Sign Summary in contract plans.



DETAIL FOR "ON" OR "SLIP" RAMP TRAFFIC CONTROL



DETAIL FOR BRIDGE END PROTECTION FOR REVERSE TRAFFIC DIRECTION



DELINEATE THE BRIDGE AND GUARDRAIL AS SHOWN. DELINEATORS SHALL BE WHITE IN COLOR ONLY.

Designed by: TRAFFIC
Drawn by: JTG
Checked by: TRAFFIC
Previous Dwg. No. 703-3H

TWO WAY TRAFFIC ON ONE ROADWAY
OF A DIVIDED HIGHWAY
(CHANNELIZING DEVICES THROUGH PROJECT)

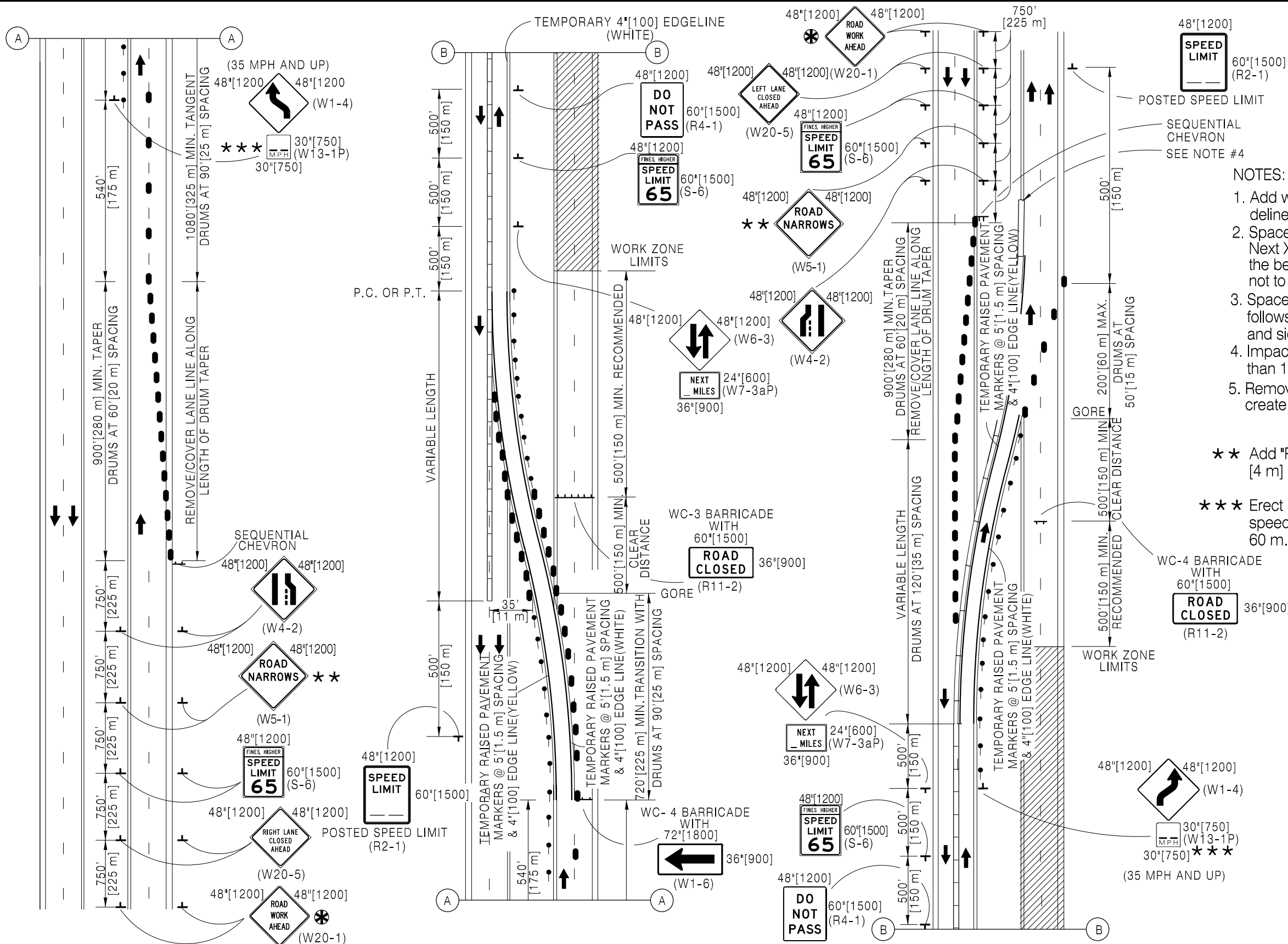
Note: Units shown in brackets [] are metric and are in millimeters (mm) unless other units are shown.



**CONSTRUCTION TRAFFIC
CONTROL FOUR LANE**

STANDARD PLAN

STANDARD PLAN NUMBER
703-3I
SHEET 3 of 12
Issued by: TRAFFIC PROGRAM
Date Issued: FEBRUARY, 2026



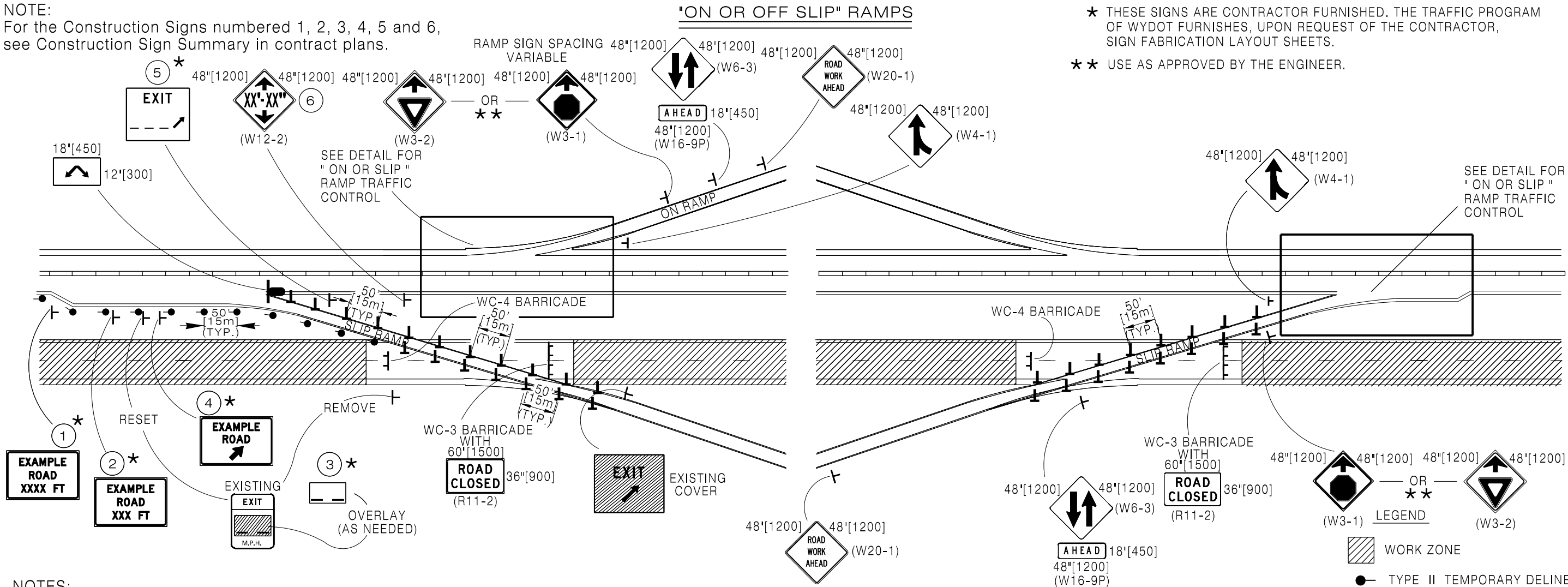
- NOTES:
1. Add white reflective delineators to the median delineator posts for the reverse flow of traffic.
 2. Space the sign sequence "two way traffic and Next X Miles, Speed Limit and Do Not Pass" at the beginning and throughout the project but not to exceed 3 miles [3.2 km].
 3. Space delineation on temporary concrete barrier as follows: 20'[6 m] through transitions or crossovers, top and sides. 50'[15 m] spacing on tangent, top and sides.
 4. Impact attenuator required if median is less than 15 feet[11 m].
 5. Remove conflicting pavement markings that create lane widths less than 11' [3.5 m] wide.

- ★ ★ Add "ROAD NARROWS" signs if lane widths are 14 ft [4 m] or less.
- ★ ★ ★ Erect an advisory speed limit plate for cross-over speeds determined by the engineer to be less than 60 m.p.h..

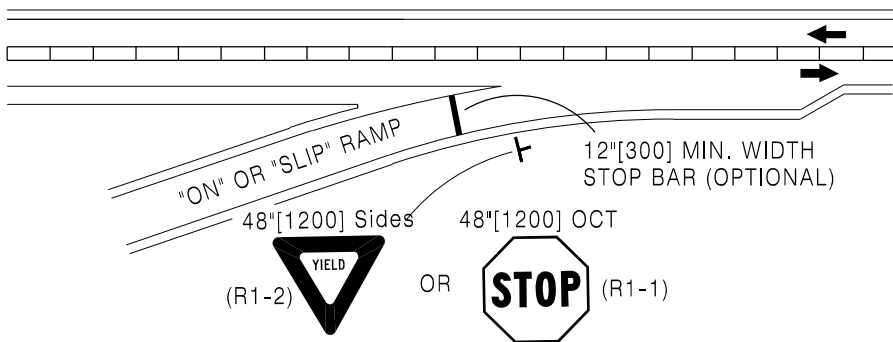
LEGEND

- WORK ZONE
- DRUM
- TYPE II TEMPORARY DELINEATOR 50'[15 m] SPACING (TYP.)
- TEMPORARY CONCRETE BARRIER
- USE ONLY IF NO PREVIOUS "ROAD WORK AHEAD" SIGNS WITHIN 1 MILE [1.6 km], OR IF OUTSIDE OF THE REGULAR CONSTRUCTION AREA.

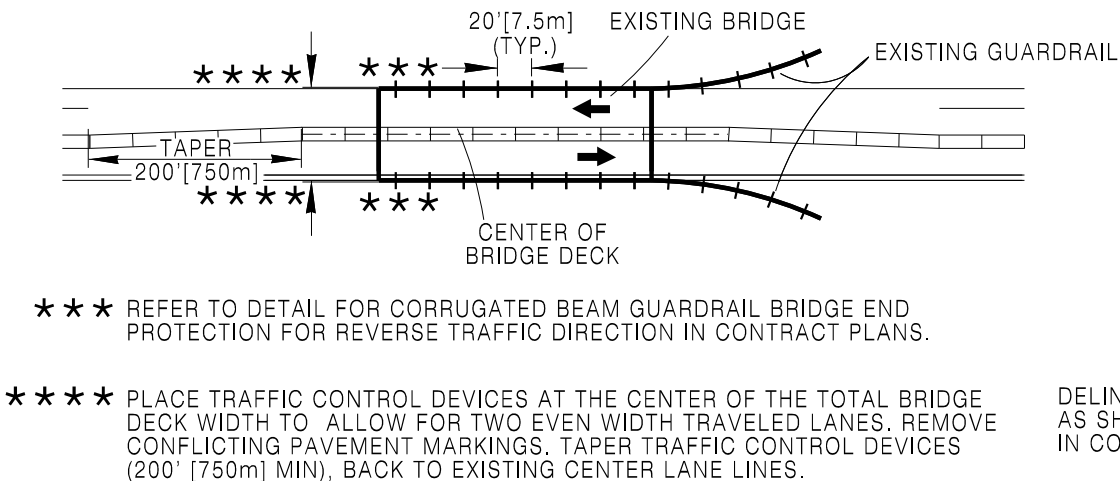
NOTE:
For the Construction Signs numbered 1, 2, 3, 4, 5 and 6,
see Construction Sign Summary in contract plans.



NOTES:
Place the Two Way Traffic Sign, Speed Limit Sign, and Do Not Pass sign sequence after each On Ramp.



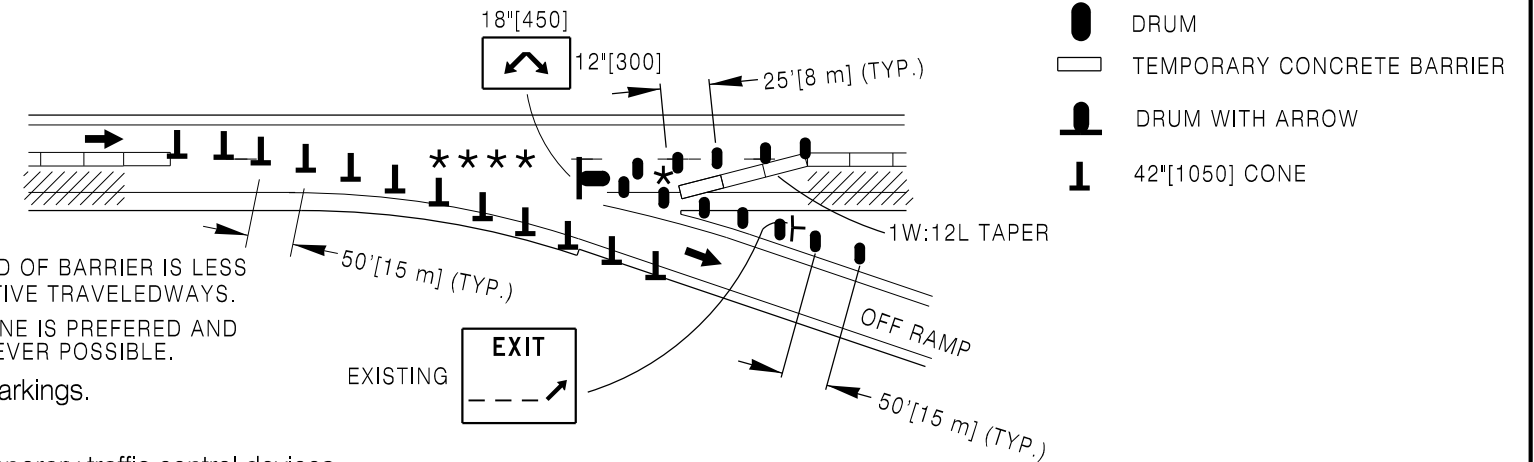
DETAIL FOR BRIDGE END PROTECTION FOR REVERSE TRAFFIC DIRECTION



DELINEATE THE BRIDGE AND GUARDRAIL AS SHOWN. DELINEATORS SHALL BE WHITE IN COLOR ONLY.

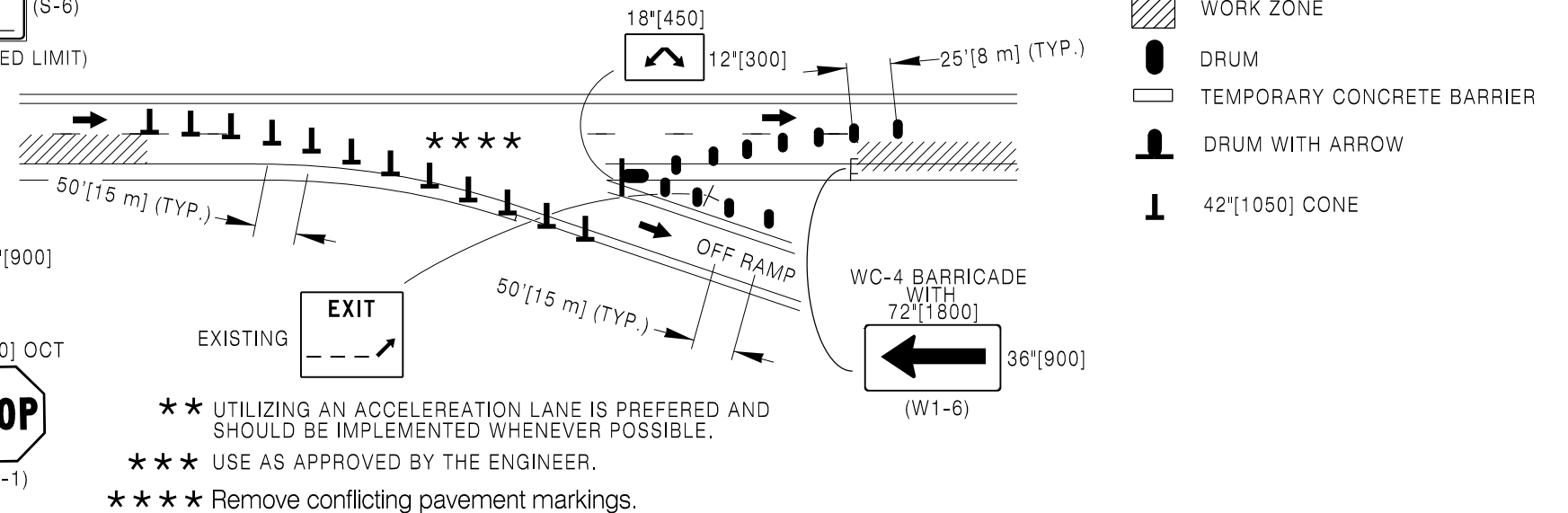
(TRAFFIC IN PASSING LANE)

LEGEND

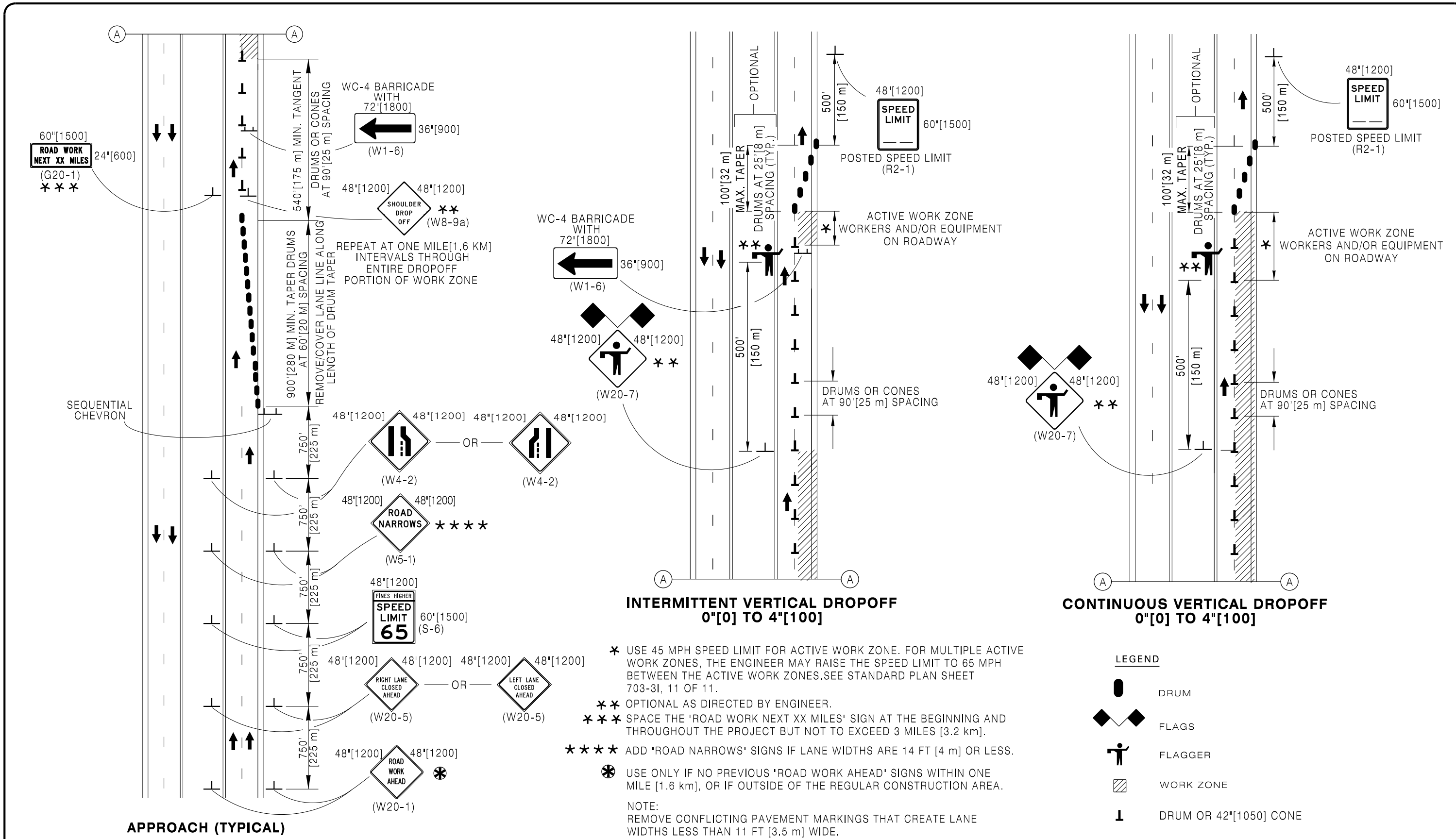


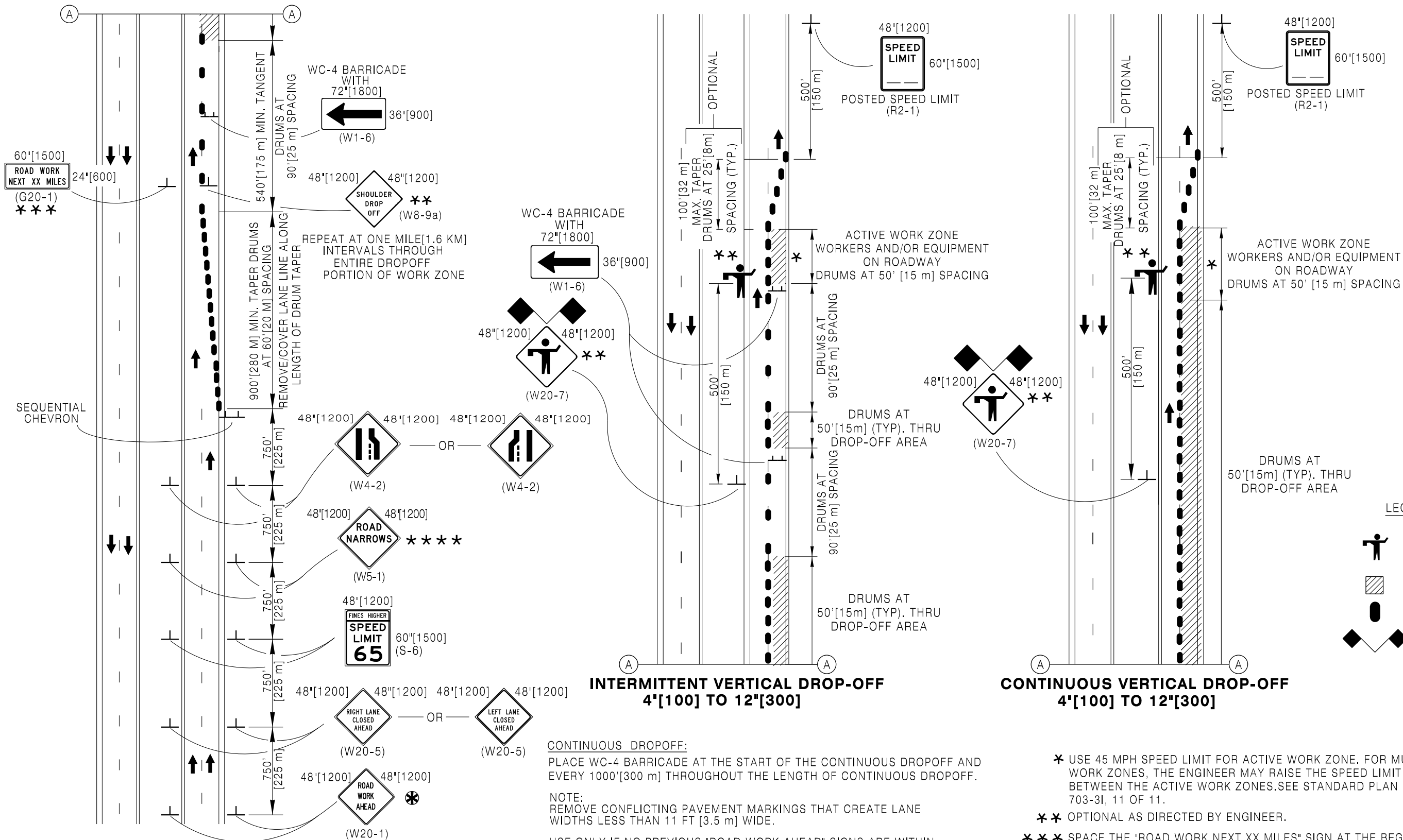
NOTE:
The engineer will field check temporary traffic control devices to ensure adequate sight distance, conforming to the existing geometry, safety, etc..

LEGEND



- ★ ★ UTILIZING AN ACCELERATION LANE IS PREFERRED AND SHOULD BE IMPLEMENTED WHENEVER POSSIBLE.
- ★ ★ ★ USE AS APPROVED BY THE ENGINEER.
- ★ ★ ★ ★ Remove conflicting pavement markings.





CONTINUOUS DROPOFF:
PLACE WC-4 BARRICADE AT THE START OF THE CONTINUOUS DROPOFF AND EVERY 1000' [300 m] THROUGHOUT THE LENGTH OF CONTINUOUS DROPOFF.

NOTE:
REMOVE CONFLICTING PAVEMENT MARKINGS THAT CREATE LANE WIDTHS LESS THAN 11 FT [3.5 m] WIDE.

* USE ONLY IF NO PREVIOUS "ROAD WORK AHEAD" SIGNS ARE WITHIN ONE MILE [1.6 km], OR OUTSIDE OF REGULAR CONSTRUCTION AREA.

* USE 45 MPH SPEED LIMIT FOR ACTIVE WORK ZONE. FOR MULTIPLE ACTIVE WORK ZONES, THE ENGINEER MAY RAISE THE SPEED LIMIT TO 65 MPH BETWEEN THE ACTIVE WORK ZONES. SEE STANDARD PLAN SHEET 703-3I, 11 OF 11.

** OPTIONAL AS DIRECTED BY ENGINEER.

*** SPACE THE "ROAD WORK NEXT XX MILES" SIGN AT THE BEGINNING AND THROUGHOUT THE PROJECT BUT NOT TO EXCEED 3 MILES [3.2 km].

**** ADD "ROAD NARROWS" SIGNS IF LANE WIDTHS ARE 14 FT [4 m] OR LESS.

Designed by: TRAFFIC
Drawn by: JTG
Checked by: TRAFFIC
Previous Dwg. No. 703-3H

ONE LANE CLOSURE
4"[100] TO 12"[300] VERTICAL DROPOFF

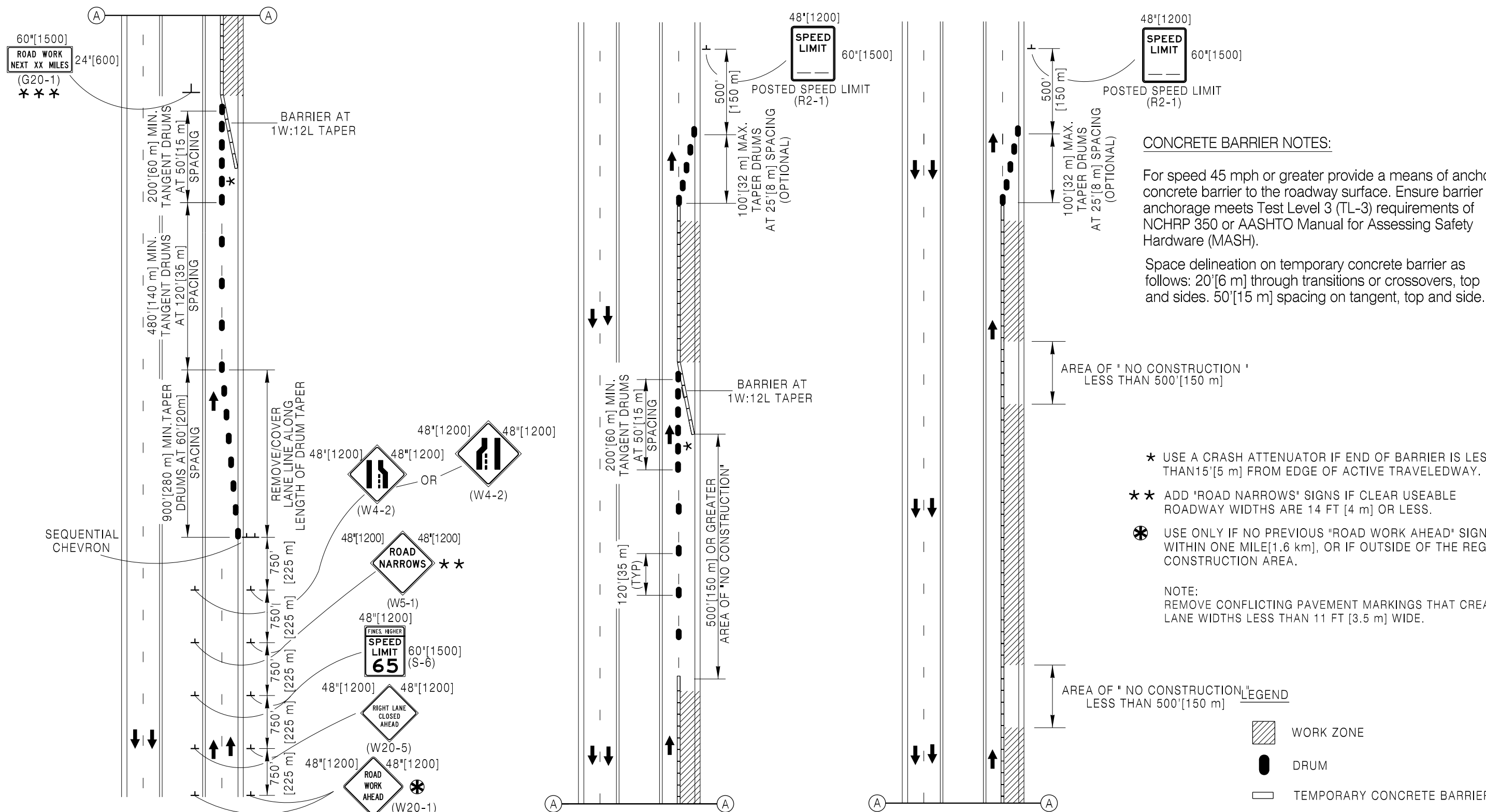
Note: Units shown in brackets [] are metric and are in millimeters (mm) unless other units are shown.



CONSTRUCTION TRAFFIC CONTROL FOUR LANE

STANDARD PLAN

STANDARD PLAN NUMBER
703-3I
SHEET 8 of 12
Issued by: TRAFFIC PROGRAM
Date Issued: FEBRUARY, 2026



CONCRETE BARRIER NOTES:

For speed 45 mph or greater provide a means of anchoring concrete barrier to the roadway surface. Ensure barrier anchorage meets Test Level 3 (TL-3) requirements of NCHRP 350 or AASHTO Manual for Assessing Safety Hardware (MASH).

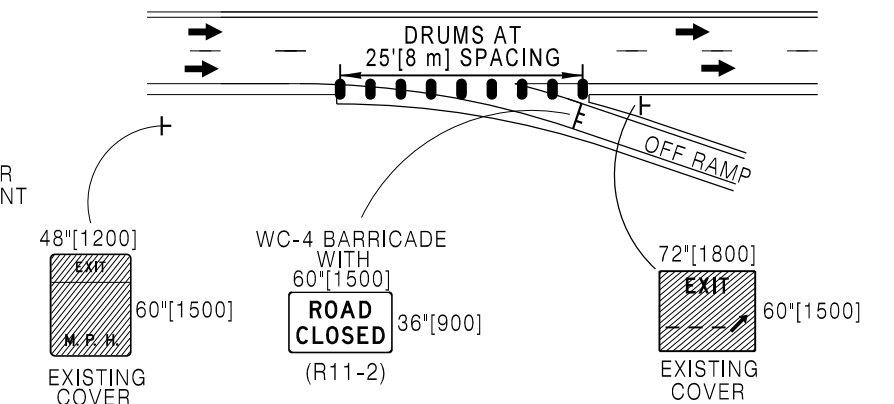
Space delineation on temporary concrete barrier as follows: 20'[6 m] through transitions or crossovers, top and sides. 50'[15 m] spacing on tangent, top and side.

- * USE A CRASH ATTENUATOR IF END OF BARRIER IS LESS THAN 15'[5 m] FROM EDGE OF ACTIVE TRAVELEDWAY.
- ** ADD "ROAD NARROWS" SIGNS IF CLEAR USEABLE ROADWAY WIDTHS ARE 14 FT [4 m] OR LESS.
- * USE ONLY IF NO PREVIOUS "ROAD WORK AHEAD" SIGNS ARE WITHIN ONE MILE[1.6 km], OR IF OUTSIDE OF THE REGULAR CONSTRUCTION AREA.

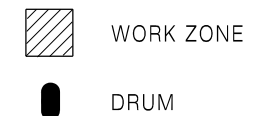
NOTE:
REMOVE CONFLICTING PAVEMENT MARKINGS THAT CREATE LANE WIDTHS LESS THAN 11 FT [3.5 m] WIDE.

LEGEND

- WORK ZONE
- DRUM
- TEMPORARY CONCRETE BARRIER



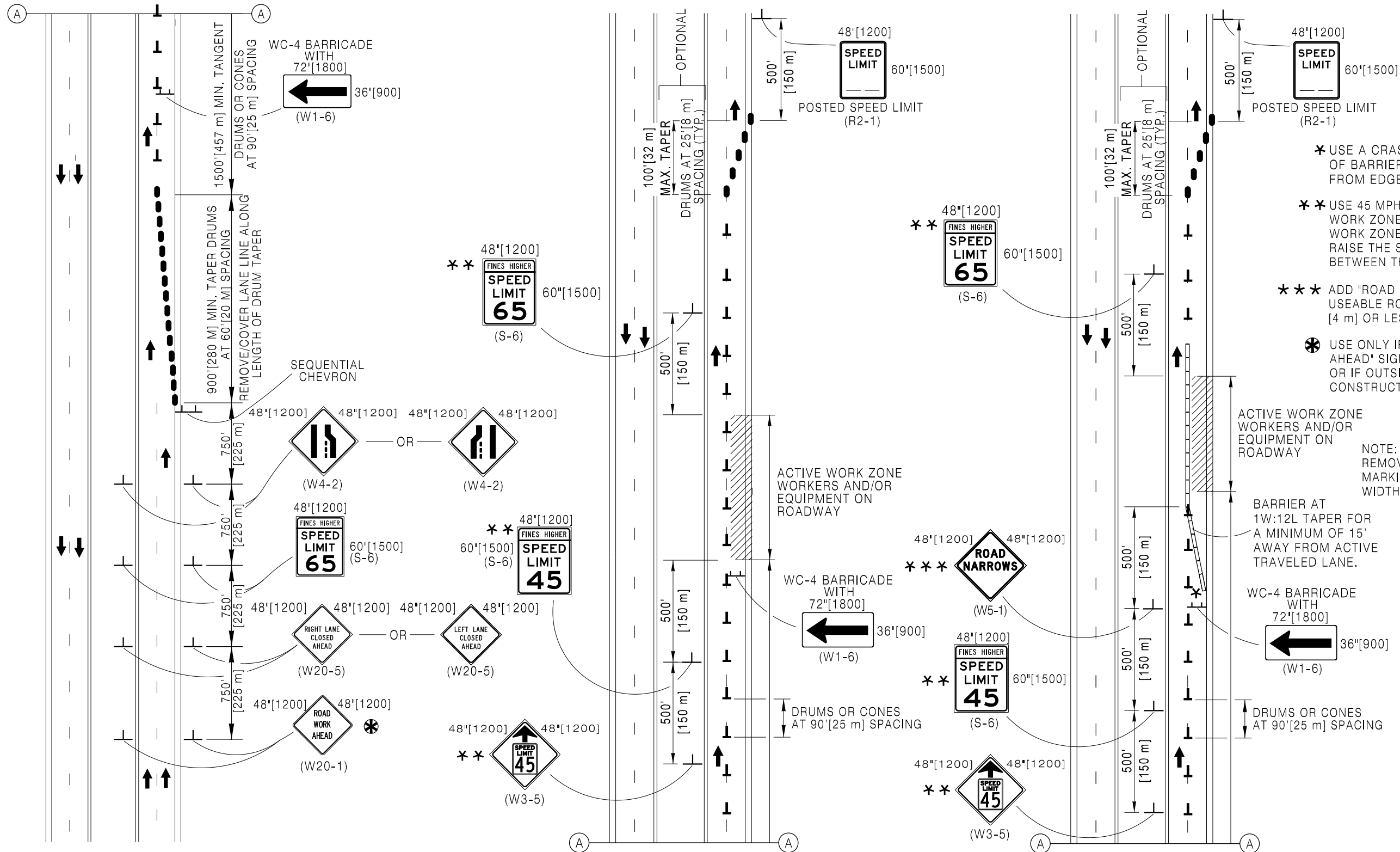
LEGEND



- ★ THESE SIGNS ARE CONTRACTOR FURNISHED. THE TRAFFIC PROGRAM OF WYDOT FURNISHES, UPON REQUEST OF THE CONTRACTOR, SIGN FABRICATION LAYOUT SHEETS.
- ✱ USE ONLY IF NO PREVIOUS "ROAD WORK AHEAD" SIGNS ARE WITHIN ONE MILE[1.6 km], OR IF OUTSIDE THE REGULAR CONSTRUCTION AREA.

NOTES:

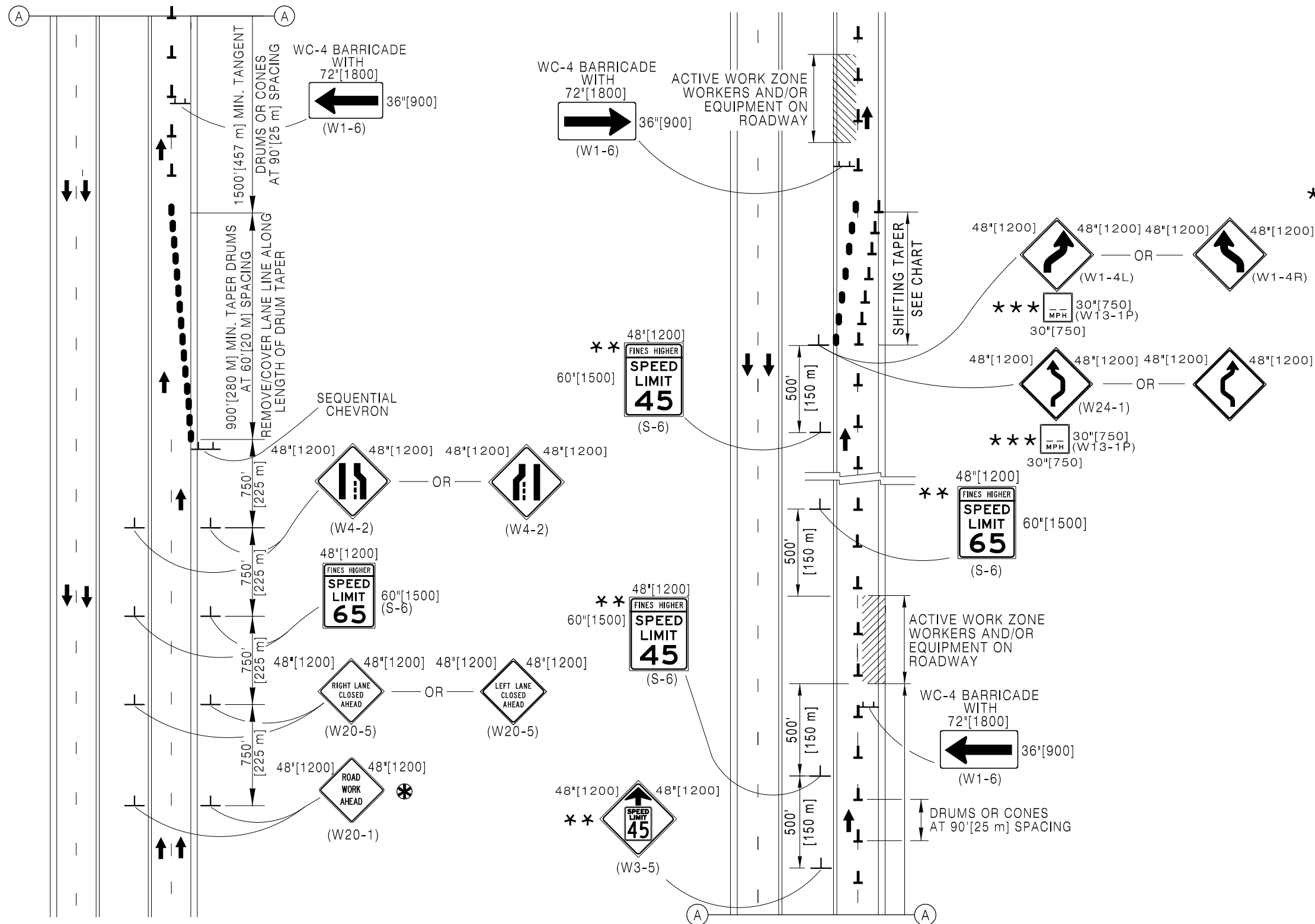
- 1) REMOVE CONFLICTING PAVEMENT MARKINGS THAT CREATE LANE WIDTHS LESS THAN 11 FT[3.5 m] WIDE.
- 2) REMOVE OR COVER ALL CONFLICTING EXISTING SIGNS.



- * USE A CRASH ATTENUATOR IF END OF BARRIER IS LESS THAN 15' [5 m] FROM EDGE OF ACTIVE TRAVELEDWAY.
- ** USE 45 MPH SPEED LIMIT FOR ACTIVE WORK ZONES. FOR MULTIPLE ACTIVE WORK ZONES, THE ENGINEER MAY RAISE THE SPEED LIMIT TO 65 MPH BETWEEN THE ACTIVE WORK ZONES.
- *** ADD "ROAD NARROWS" SIGNS IF CLEAR USEABLE ROADWAY WIDTH IS 14 FT [4 m] OR LESS.
- * USE ONLY IF NO PREVIOUS "ROAD WORK AHEAD" SIGNS WITHIN ONE MILE [1.6 km], OR IF OUTSIDE OF THE REGULAR CONSTRUCTION AREA.

NOTE:
REMOVE CONFLICTING PAVEMENT MARKINGS THAT CREATE LANE WIDTHS LESS THAN 11 FT [3.5 m] WIDE.

- LEGEND**
- DRUM
 - ▨ WORK ZONE
 - ⌫ DRUM OR 42" [1050] CONE
 - ▭ TEMPORARY CONCRETE BARRIER



- * USE A CRASH ATTENUATOR IF END OF BARRIER IS LESS THAN 15' [5 m] FROM EDGE OF ACTIVE TRAVELEDWAY.
- * * USE 45 MPH SPEED LIMIT FOR ACTIVE WORK ZONES. FOR MULTIPLE ACTIVE WORK ZONES, THE ENGINEER MAY RAISE THE SPEED LIMIT TO 65 MPH BETWEEN THE ACTIVE WORK ZONES.

* * * * * OPTIONAL

- * * * * * FOR ACTIVE WORK ZONES WITH VERTICAL DROP OFFS REFER TO STANDARD PLAN 703-31, SHEET NUMBERS 7, 8 AND 9.

- * USE ONLY IF NO PREVIOUS "ROAD WORK AHEAD" SIGNS WITHIN ONE MILE [1.6 km], OR IF OUTSIDE OF THE REGULAR CONSTRUCTION AREA.

NOTE:
REMOVE CONFLICTING PAVEMENT MARKINGS THAT CREATE LANE WIDTHS LESS THAN 11 FT [3.5 m].

LEGEND

- DRUM
- ▨ WORK ZONE
- ⌏ DRUM OR 42" [1050] CONE
- ▬ TEMPORARY CONCRETE BARRIER

SHIFTING TAPER CRITERIA

SPEED LIMIT	SHIFTING TAPER LENGTH (MIN)	DEVICE SPACING (MAX)
45	270	45
65	390	65

APPROACH (TYPICAL)

INTERMITTENT ACTIVE WORK ZONES
(IN ALTERNATE LANES)

Designed by: TRAFFIC
Drawn by: JTG
Checked by: TRAFFIC
Previous Dwg. No. 703-3H

ONE LANE CLOSURE
INTERMITTENT ACTIVE WORK AREAS
IN ALTERNATING LANES

Note: Units shown in brackets [] are metric and are in millimeters (mm) unless other units are shown.



WYOMING DEPARTMENT
OF
TRANSPORTATION



CONSTRUCTION TRAFFIC
CONTROL FOUR LANE

STANDARD PLAN

STANDARD PLAN NUMBER
703-31
SHEET 12 of 12
Issued by: TRAFFIC PROGRAM
Date Issued: FEBRUARY, 2026