

WYDOT INFO & TRANSPORTATION FACTS



Photo: Rotary Plow (Jaxon Penfied-D1)

DIVISION OVERVIEWS

UPDATED DECEMBER 2025



DIRECTOR'S OFFICE

CIVIL RIGHTS

Ensures compliance with and provides guidance on Title VI, Prevailing Wage, Americans with Disabilities Act, Equal Employment Opportunity, and Disadvantaged Business Enterprise

INTERNAL REVIEW

- *Audits resources and operations*
- *Evaluates pass-through funds to subrecipients*

MANAGEMENT SERVICES

- *Oversees state and federal transportation policy*
- *Writes and submits grant applications*
- *Promulgates rules and regulations*
- *Reviews/publishes internal policy*

PUBLIC AFFAIRS

- *Updates, alerts, and communicates other information through various mediums*
- *Responds to requests for interviews and public information*
- *Coordinates ribbon cuttings and other public events*

FINANCIAL DIVISION

BUDGET

- *Manages operating budget*
- *Budgets grants*
- *Authorizes reimbursement to granted entities, awarded contractors, and consultants*

GRANTS & CONTRACTS

- *Reviews contracts*
- *Submits quarterly grant reports*

FINANCIAL SERVICES

- *Completes annual financial and compliance audits*
- *Provides financial statements, accounts for reports on costs, and administers payroll*

DIVISION OVERVIEWS

UPDATED DECEMBER 2025



FINANCIAL DIVISION

FUEL TAX ADMIN.

- *Collects and distributes fuel taxes*

PROCUREMENT SERVICES

- *Solicits bids for equipment, materials, supplies, services, and public works*
- *Issues purchase orders and contracts*
- *Oversees sale of surplus property*

ENGINEERING & PLANNING DIVISION

BRIDGE

- *Designs and inspects bridges and other structures*
- *Administers the Bridge Management System*

CONTRACTS & ESTIMATES

- *Oversees bidding and contract awards*
- *Estimates project costs during design*

GEOLOGY

- *Completes subsurface investigations and testing*
- *Identifies and mitigates landslides, rock falls, and other natural hazards*

HIGHWAY DEVELOPMENT

- *Designs projects*
- *Issues standard plans and consultant contracts*
- *Processes utility licenses*
- *Collects mapping, photography, and survey data*

HIGHWAY SAFETY

- *Manages the Highway Safety Improvement Plan, Safety Portal, and statewide crash records*
- *Administers various safety programs*

DIVISION OVERVIEWS

UPDATED DECEMBER 2025



ENGINEERING & PLANNING DIVISION

PLANNING

- *Creates and updates transportation plans*
- *Administers systems planning, the Railroad At-Grade Crossing Program, and performance measures*
- *Conducts environmental and cultural reviews*
- *Manages funding and oversight for local projects*

PROGRAM PERFORMANCE

- *Coordinates project design schedules*
- *Oversees the 6-year State Transportation Improvement Program (STIP)*
- *Coordinates WYDOT's Strategic Plan*

MATERIALS

- *Provides materials and pavement engineering and testing*
- *Oversees the Materials Quality Assurance Program and the Research Advisory Committee*

RIGHT-OF-WAY

- *Acquires land for construction projects*
- *Manages land surveys, outdoor advertising permits, leases, and the Junkyard Control Program*

OPERATIONS DIVISION

CONSTRUCTION

- *Provides construction training and support*
- *Prequalifies contractors*
- *Processes subcontracts*
- *Manages the Construction Management System*

DISTRICTS

- *Administer project construction and closeout*
- *Maintain infrastructure, traffic control devices, equipment, and facilities*
- *Issue access permits and permits for highway right-of-way work*
- *Oversee highway striping and traffic impact study reviews*

EQUIPMENT

- *Purchases all heavy equipment and light duty fleets statewide*
- *Manages the shop for rigging snow plows*

DIVISION OVERVIEWS

UPDATED DECEMBER 2025



OPERATIONS DIVISION

FACILITIES MANAGEMENT

- Oversees the Facilities Improvement Plan
- Completes repairs and preventative and major maintenance

MAINTENANCE

- Manages Agile Assets (budget/inventory program)
- Provides field maintenance training and equipment support
- Coordinates response to national disasters and emergencies

TRAFFIC

- Designs all traffic control devices and geometric design layouts
- Controls state owned signal systems
- Manufactures all traffic and highway signing
- Collects and analyzes traffic data and recommends solutions

AERONAUTICS DIVISION

AIR SERVICE DEVELOPMENT

- Develops Wyoming air service
- Oversees the Air Service Enhancement Program and Capacity Purchase Agreement

AVIATION PLANNING

- Oversees airport master planning
- Administers Airport Improvement Program grants
- Allocates state funds from the Aeronautics Commission

ENGINEERING & PLANNING

- Oversees airport asset management
- Administers airport design and construction projects
- Conducts safety data inspections
- Maintains the mountain weather station network

FLIGHT OPERATIONS

- Provides on-demand air transportation to state entities
- Operates a hangar facility and fuel farm

DIVISION OVERVIEWS

UPDATED DECEMBER 2025



AERONAUTICS DIVISION

UNMANNED AIRCRAFT SYSTEMS

- Educates on safe drone integration
- Implements guidance and processes for safe drone integration

SUPPORT SERVICES DIVISION

COMPLIANCE & INVESTIGATION

- Regulates vehicle-related industries
- Investigates complaints from vehicle industry victims
- Trains county clerks, law enforcement, and vehicle dealers

DRIVER SERVICES

- Issues driver's licenses, IDs, and disabled placards
- Provides driving records
- Processes citations
- Collects reinstatement fees

EMPLOYEE SAFETY

- Updates and implements safety policies
- Provides safety training
- Performs shop and safety meetings

MOTOR VEHICLE SERVICES

- Completes title searches
- Issues state assigned vehicle identification numbers and licenses for dealerships and rentals
- Produces specialty license plates
- Oversees the International Fuel Tax Agreement and International Registration Plan

OFFICE SERVICES

- Provides mailing and printing services
- Manages record retention and destruction

TRAINING SERVICES

- Coordinates and creates trainings
- Tracks engagement and training success

DIVISION OVERVIEWS

UPDATED DECEMBER 2025



TECHNOLOGY DIVISION

EMERGENCY COMMUNICATIONS

- Inspects and upgrades WyoLink radio sites and roadside radios
- Collaborates with Enterprise Technology Systems to provide fiber optic connections to WYDOT locations and WyoLink sites
- Coordinates Next Generation 911 implementation with local entities

GIS/ITS

- Oversees 511 environments and the Transportation Management Center
- Deploys connected vehicle-2-everything devices
- Implements innovative technology solutions to transportation challenges

INFORMATION TECHNOLOGY

- Ensures a stable computing environment
- Supports operations through IT solutions
- Collaborates with Enterprise Technology Systems

WYOMING HIGHWAY PATROL

OFFICE OF THE COLONEL

- Focuses on professional standards ensuring WHP remains accountable to internal practices and procedures
- Oversees trooper hiring and testing
- Fulfills public record requests

FIELD OPERATIONS BUREAU

- Enforces Wyoming laws
- Responds to crashes
- Assists motorists
- Oversees ports of entry and commercial carriers
- Educates on safety

SUPPORT SERVICES BUREAU

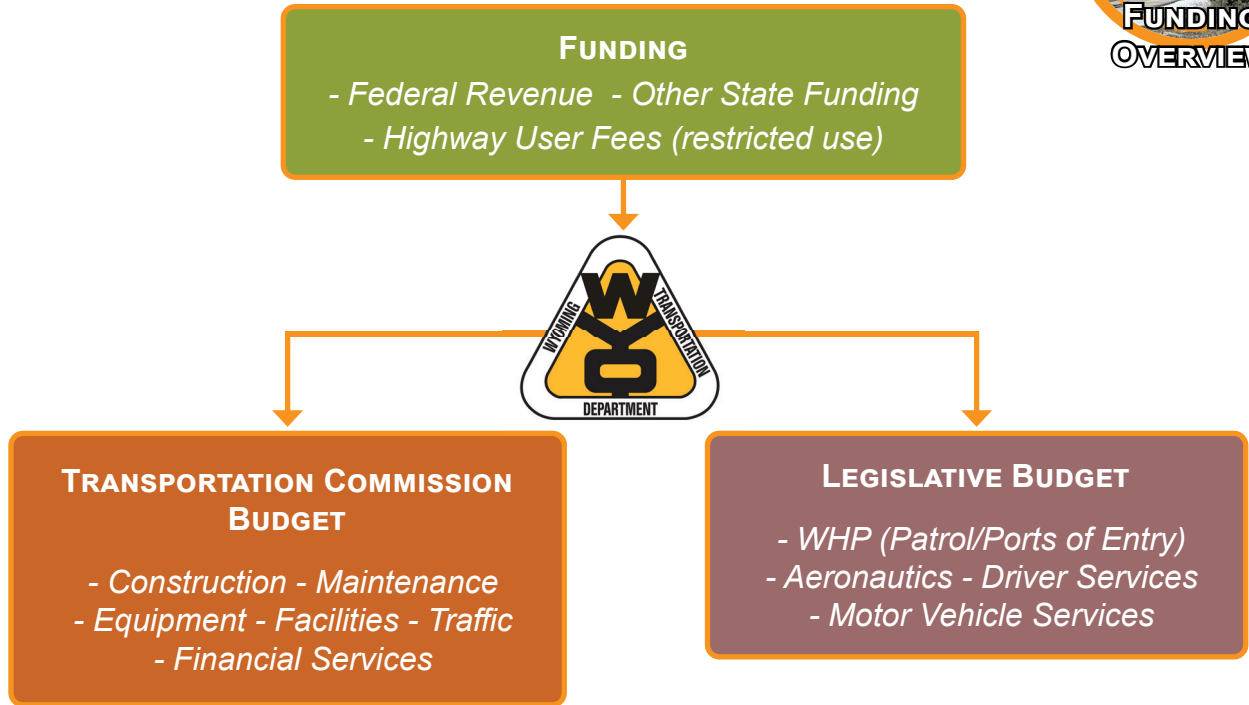
- Manages training and certifications
- Upgrades and maintains equipment and technology for troopers
- Provides executive protection

FINANCIAL FACTS

UPDATED DECEMBER 2025

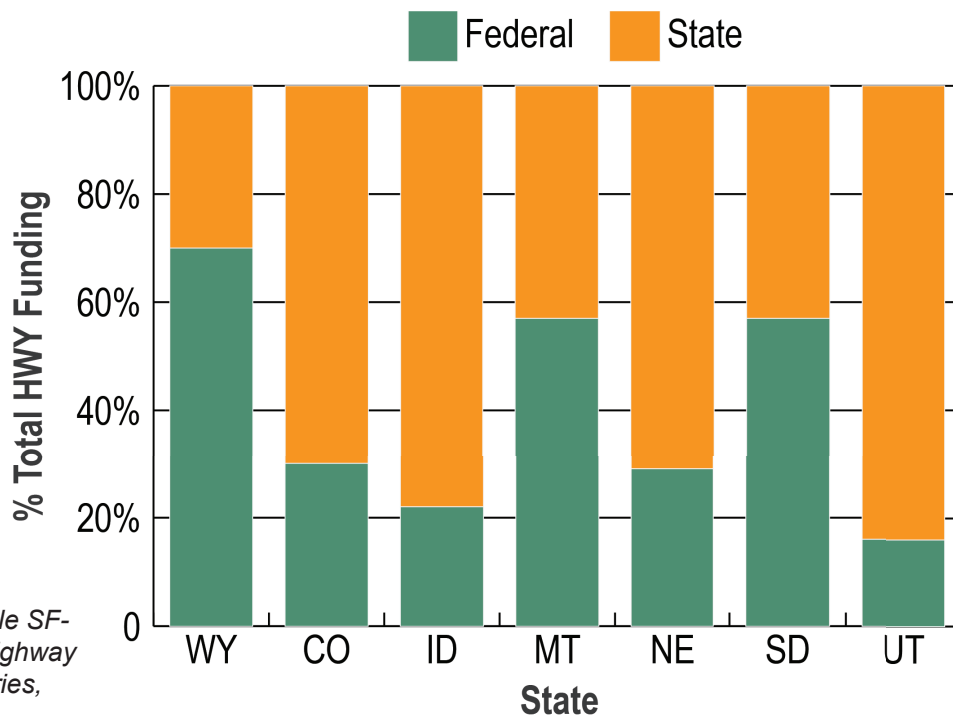


WYDOT FUNDING STREAMS & BUDGETS



Source: FY26 WYDOT Operating Budget Presentation

2025 FEDERAL VS. STATE HIGHWAY FUNDING COMPARISONS



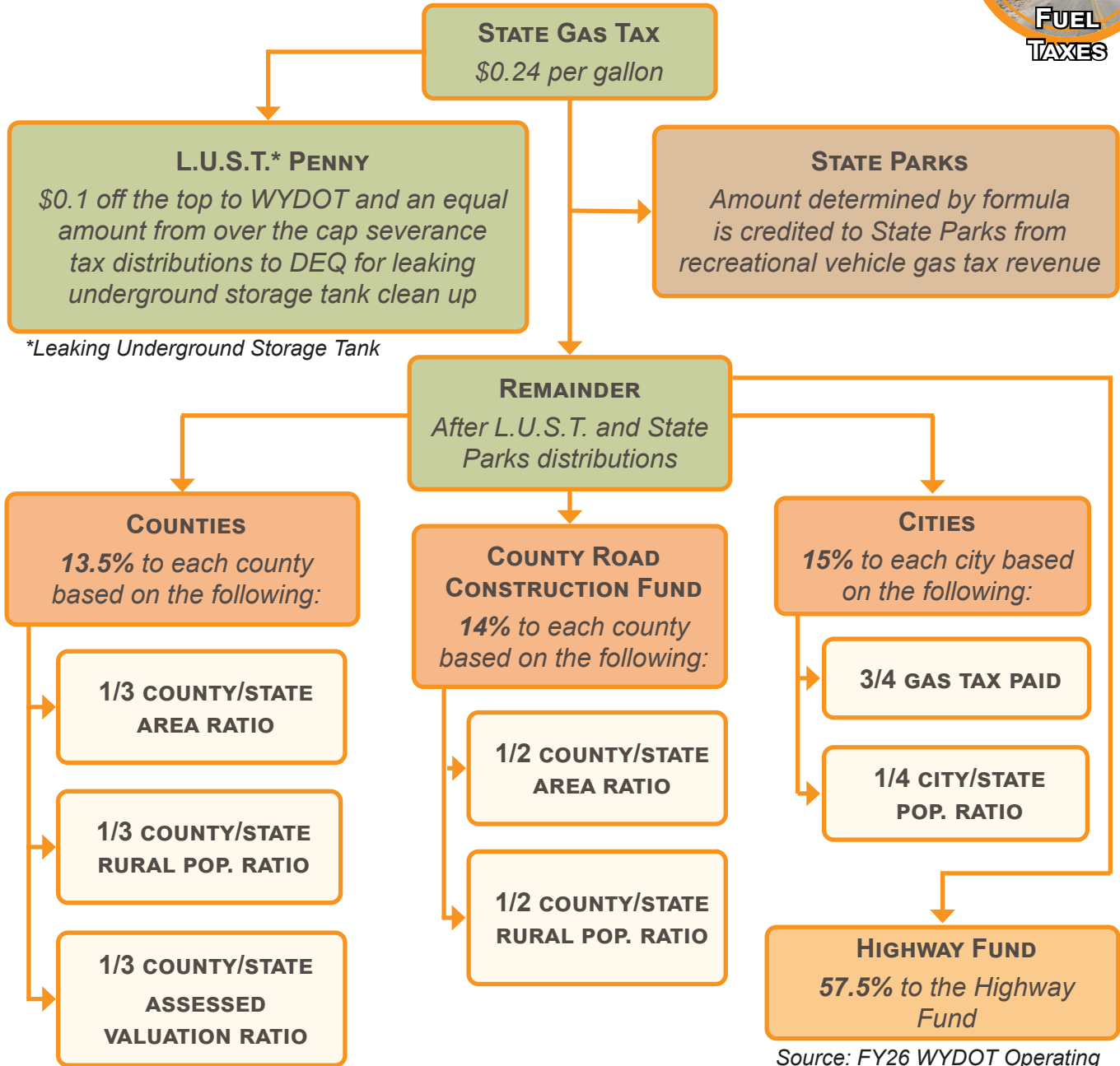
Source: Table SF-21, FHWA Highway Statistics Series, 2023 Ed.

FINANCIAL FACTS

UPDATED DECEMBER 2025



STATE GAS TAX DISTRIBUTION



*Leaking Underground Storage Tank

Source: FY26 WYDOT Operating Budget Presentation



FEDERAL GAS TAX

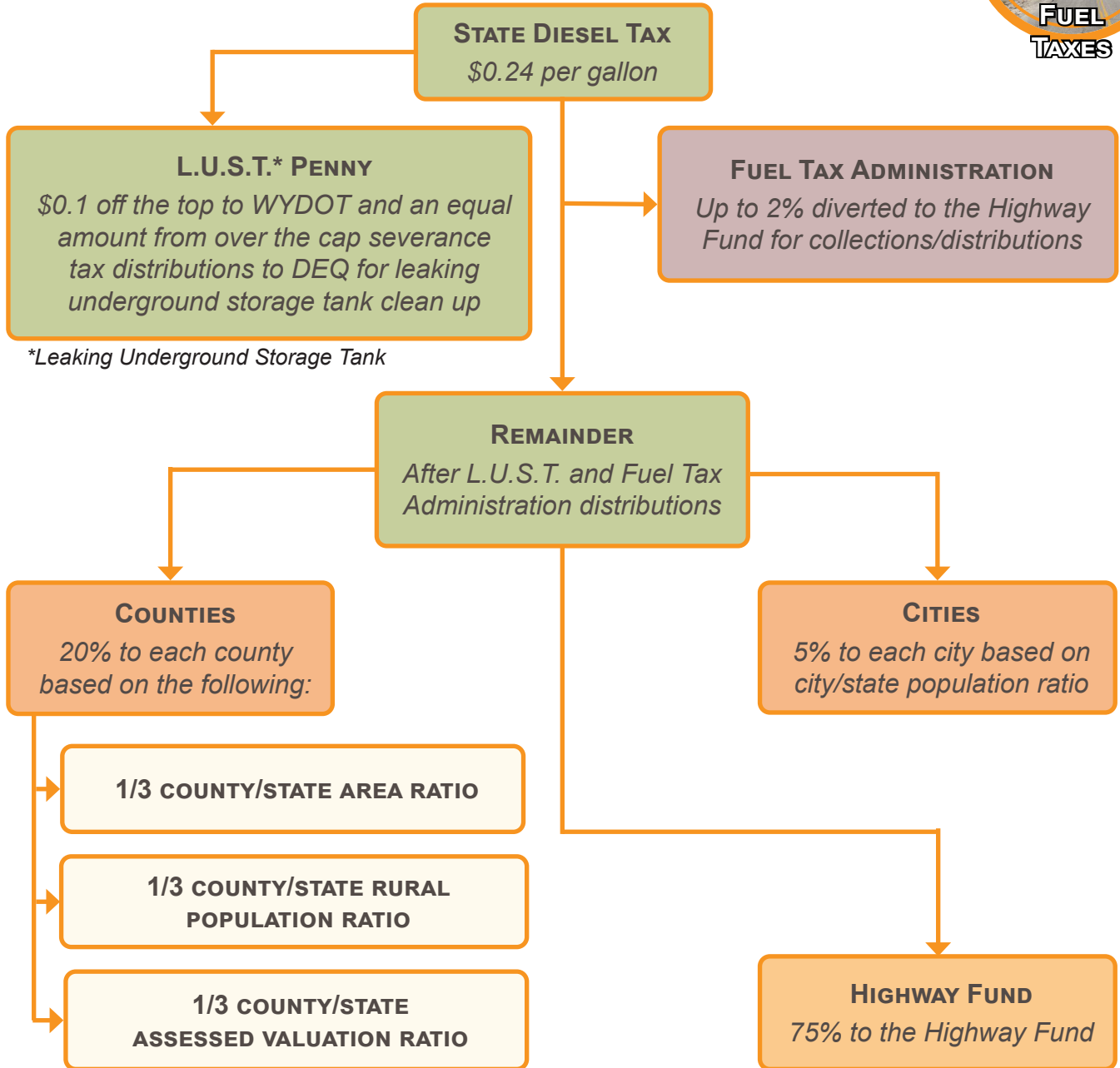
THE FEDERAL GAS TAX HAS BEEN 18.4 CENTS PER GALLON SINCE IT WAS LAST INCREASED IN 1993

FINANCIAL FACTS

UPDATED DECEMBER 2025



STATE DIESEL TAX DISTRIBUTION



*Leaking Underground Storage Tank

Source: FY26 WYDOT Operating Budget Presentation



FEDERAL DIESEL TAX

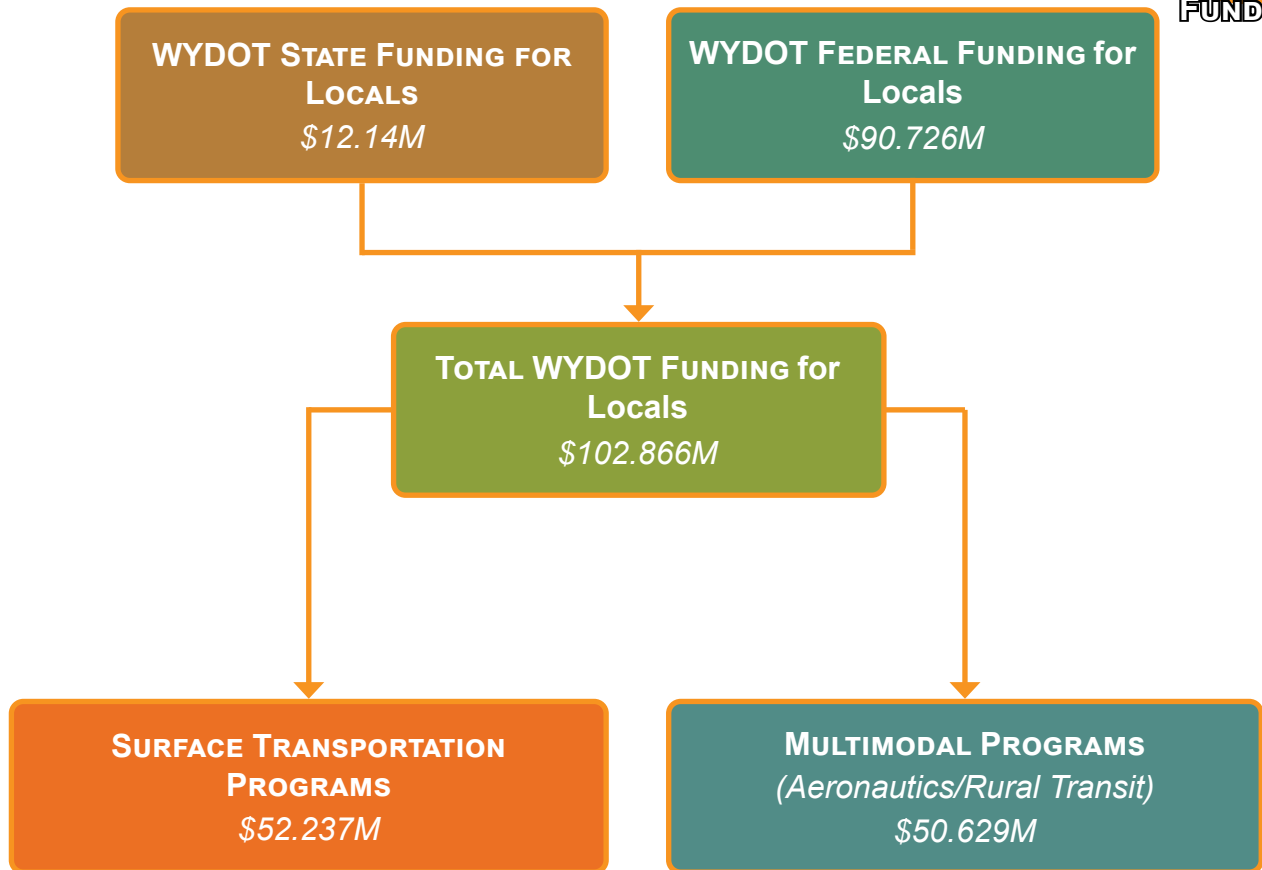
THE FEDERAL DIESEL TAX HAS BEEN 24.4 CENTS PER GALLON SINCE IT WAS LAST INCREASED IN 1993

FINANCIAL FACTS

UPDATED DECEMBER 2025



FY25 AVAILABLE FUNDING TO CITIES AND COUNTIES FROM WYDOT'S BUDGET



Source: Budget Program

SURFACE TRANSPORTATION PROGRAMS

BFP

BRIDGE FORMULA PROGRAM

- **Purpose:** bridge replacement, rehabilitation, preservation, protection, or construction projects on off-system bridges
- **Amount:** \$6.75M required + \$23.25M optional
- **Source(s):** WYDOT federal funds

BROS

OFF SYSTEM BRIDGE PROGRAM

- **Purpose:** reduce deficient bridges off state owned system
- **Amount:** \$2.48M required + \$0.662M optional
- **Source(s):** WYDOT federal funds

FINANCIAL FACTS

UPDATED DECEMBER 2025



CRIP

COMMISSION ROAD IMPROVEMENT PROGRAM

- **Purpose:** improve county rural major collectors
- **Amount:** \$3.3M optional
- **Source(s):** WYDOT federal funds

CMAQ

CONGESTION MITIGATION AND AIR QUALITY PROGRAM

- **Purpose:** maintain air quality compliance, mainly through road dust suppression
- **Amount:** \$2.2M optional
- **Source(s):** WYDOT federal funds

RHCP

RAILWAY-HIGHWAY CROSSINGS PROGRAM

- **Purpose:** improve safety at railway-highway grade crossings
- **Amount:** \$1.225M required
- **Source(s):** WYDOT federal funds

RAILROAD-HIGHWAY GRADE CROSSING PROTECTION

- **Purpose:** improve safety at railway-highway grade crossings
- **Amount:** \$0.12M required
- **Source(s):** WYDOT state funds

STP-U

STATE URBAN SYSTEM PROGRAM

- **Purpose:** address urban (pop.>5,000) roads impacted by development
- **Amount:** \$6.27M optional
- **Source(s):** WYDOT federal funds

STP-LOCAL

STATE TRANSPORTATION-LOCAL

- **Purpose:** enhance infrastructure on state routes for local entities
- **Amount:** \$0.995M optional
- **Source(s):** WYDOT federal funds

TAP/TEA

TRANSPORTATION ALTERNATIVES/ ENHANCEMENTS

- **Purpose:** improve local transportation options and enhance infrastructure
- **Amount:** \$4.792M required
- **Source(s):** WYDOT federal funds

WY T² & L-TAP

WYOMING TECHNOLOGY TRANSFER CENTER & LOCAL TECHNICAL ASSISTANCE PROGRAM

- **Purpose:** assist in gaining technical transportation information
- **Amount:** \$0.194M required
- **Source(s):** WYDOT federal (84%)/state (16%) funds

FINANCIAL FACTS

UPDATED DECEMBER 2025



MULTIMODAL TRANSPORTATION PROGRAM

AIP

Airport Improvement Program

- **Purpose:** develop public use airports
- **Amount:** \$32.027M required
- **Source(s):** WYDOT federal (72%)/state (28%) funds

ASEP

Air Service Enhancement Program

- **Purpose:** develop and support air service in Wyoming
- **Amount:** \$1.329M required
- **Source(s):** WYDOT state funds

BUS & BUS FACILITIES

- **Purpose:** replace, rehab, or purchase buses and construct bus-related facilities
- **Amount:** \$4.283M required
- **Source(s):** WYDOT federal funds

PUBLIC TRANSIT PLANNING

- **Purpose:** public transit planning
- **Amount:** \$1.266M required
- **Source(s):** WYDOT federal funds

ENHANCED MOBILITY FOR DISABLED SENIORS

- **Purpose:** assist non-profits in meeting senior and individuals with disabilities' transportation needs
- **Amount:** \$0.757M required
- **Source(s):** WYDOT federal funds

METROPOLITAN PLANNING

- **Purpose:** develop and supports intercity bus services
- **Amount:** \$0.637M required
- **Source(s):** WYDOT federal funds

RURAL TRANSIT PROGRAM

- **Purpose:** assist rural public transit with capital, planning, and operating needs (pop.<50,000)
- **Amount:** \$8.627M required
- **Source(s):** WYDOT federal funds

STATEWIDE PLANNING

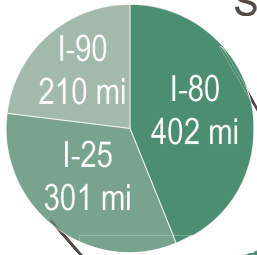
- **Purpose:** improve training and technical assistance for rural transit and promote transit coordination
- **Amount:** \$0.167M required
- **Source(s):** WYDOT federal funds

SURFACE TRANSPORTATION FACTS

UPDATED DECEMBER 2025



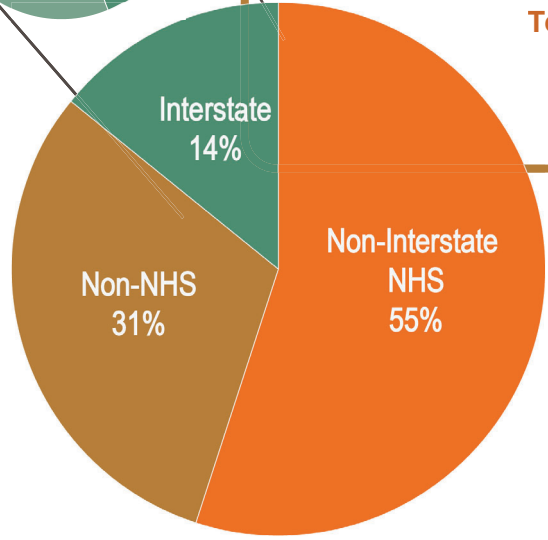
STATE OWNED SYSTEM CLASSIFICATION BY SIZE



TOTAL STATE OWNED ROADS: 6,732 CENTERLINE MILES
 STATE OWNED NHS*: 3,000 CENTERLINE MILES
 STATE OWNED NON-NHS*: 3,732 CENTERLINE MILES

TOTAL WYOMING BRIDGES: 2,810
 STATE OWNED BRIDGES: 1,965
 LOCALLY OWNED BRIDGES: 845

Sources:
 Planning & Bridge programs



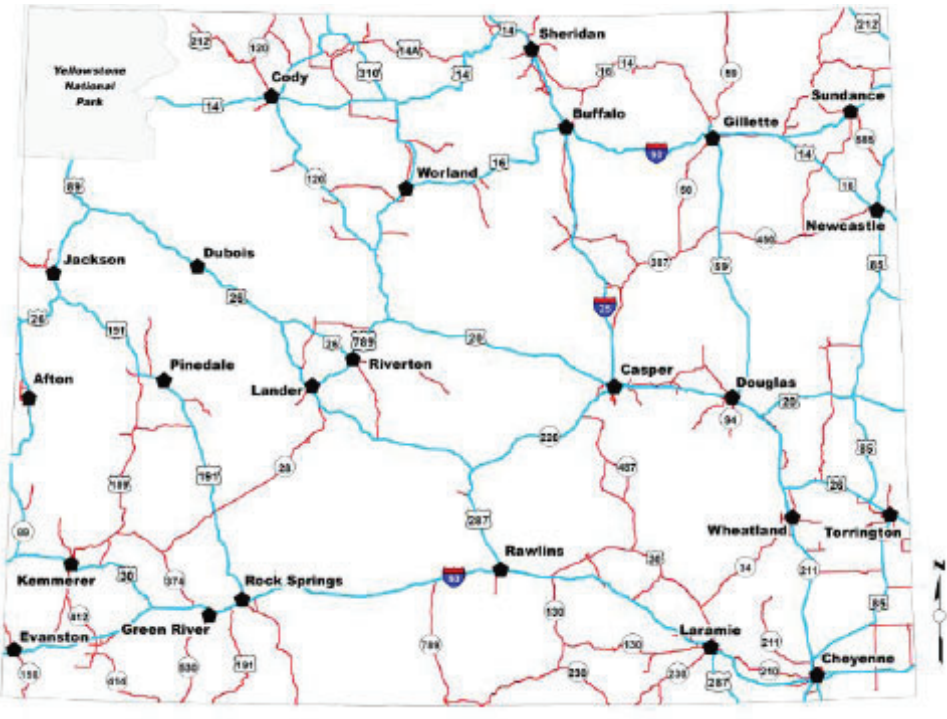
*National Highway System



SYSTEM SIZE VS. USE

THE STATE OWNED HIGHWAY SYSTEM ACCOUNTS FOR 22% OF WYOMING'S TOTAL PUBLIC ROAD SYSTEM, YET IT ABSORBS THE MAJORITY OF TRAFFIC

STATE OWNED ROAD SYSTEM MAP BY PRIORITY



High PRIORITY (NHS)
 Low PRIORITY (NON-NHS)

Source: Planning Program

MULTIMODAL TRANSPORTATION FACTS

UPDATED DECEMBER 2025



TOTAL WY AIRPORTS: 40

COMMERCIAL SERVICE AIRPORTS: 9

CASPER/NATRONA INTERNATIONAL	JACKSON HOLE REGIONAL
CHEYENNE REGIONAL	LARAMIE REGIONAL
YELLOWSTONE REGIONAL	CENTRAL WY REGIONAL
NORTHEAST WY REGIONAL	SOUTHWEST WY REGIONAL
	SHERIDAN COUNTY

BUSINESS AIRPORTS: 11

AFTON-LINCOLN MUNICIPAL	SOUTH BIG HORN COUNTY	SHIVELY FIELD
JOHNSON COUNTY	HUNT FIELD	TORRINGTON MUNICIPAL
CONVERSE COUNTY	RALPH WENZ FIELD	WORLAND MUNICIPAL
EVANSTON-UINTA COUNTY	RAWLINS MUNICIPAL	

INTERMEDIATE AIRPORTS: 10

MILEY MEMORIAL FIELD	KEMMERER MUNICIPAL	HOT SPRINGS COUNTY
DUBOIS MUNICIPAL	MONDELL FIELD	PHIFER FIELD
FORT BRIDGER	PINE BLUFFS MUNICIPAL	
CAMP GUERNSEY	POWELL MUNICIPAL	

LOCAL AIRPORTS: 10

NORTH BIG HORN COUNTY	COKEVILLE MUNICIPAL*	MEDICINE BOW*
DIXON	THOMAS MEMORIAL*	SHOSHONI MUNICIPAL*
HULETT MUNICIPAL	GREATER GREEN	UPTON MUNICIPAL*
LUSK MUNICIPAL	RIVER INTERGALACTIC SPACEPORT*	

*Unpaved

Source: Air Service Development Program



AIR SERVICE AS OF WINTER 2025

WY HAS 4 CARRIERS SERVING 13 DESTINATIONS (SOME SEASONAL):

ATLANTA	HOUSTON	SAN DIEGO
CHICAGO	LOS ANGELES	SAN FRANCISCO
DALLAS	MINNEAPOLIS	SEATTLE
DENVER	NEWARK	
DULLES	SALT LAKE CITY	

Source: Air Service Development Program

MULTIMODAL TRANSPORTATION FACTS

UPDATED DECEMBER 2025



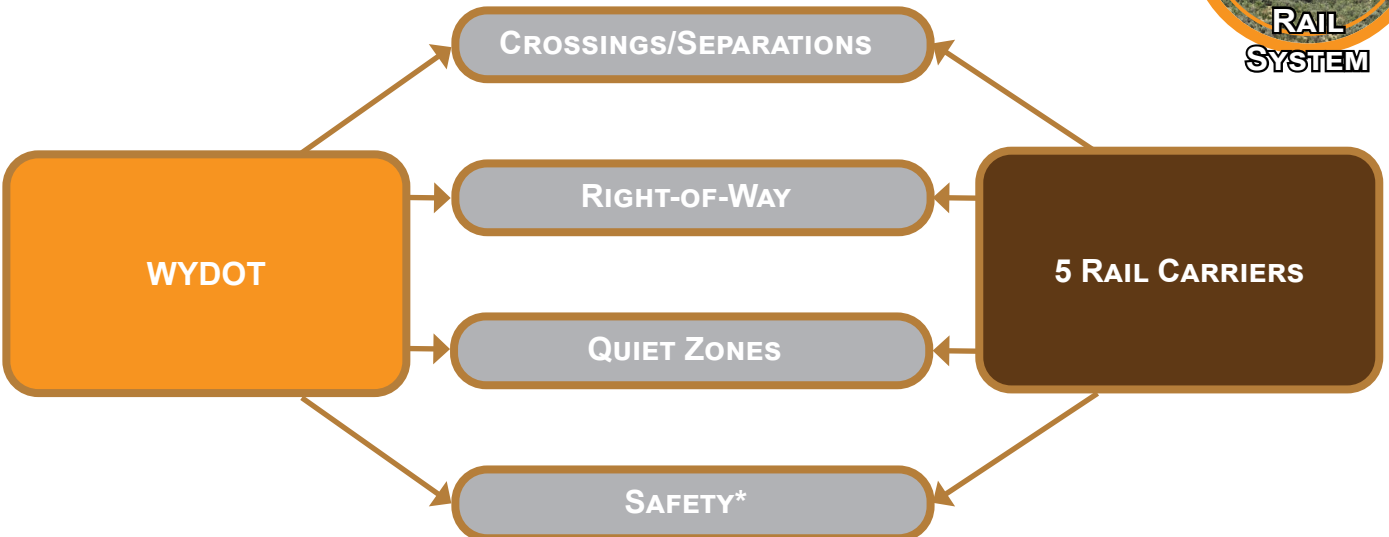
TYPES OF WYDOT-ADMINISTERED TRANSIT ASSISTANCE



Source: Planning Program

TYPES OF WYDOT-ADMINISTERED RAIL ASSISTANCE

WYDOT COORDINATES THE FOLLOWING FUNCTIONS WITH RAILROAD CARRIERS OPERATING IN WYOMING



*Includes fireguards, livestock loss and injury, railroad fencing, etc.

Source: Planning Program



RAIL FACTS

WYOMING DOES NOT HAVE PASSENGER RAIL, AND BY THE WYOMING CONSTITUTION, THE STATE OF WYOMING CANNOT OWN OR OPERATE RAIL

DRIVER'S LICENSES & REGISTRATIONS

UPDATED DECEMBER 2025



FY25 LICENSED WYOMING DRIVERS

TOTAL LICENSED WYOMING DRIVERS*
458,645

NON-COMMERCIAL
442,146

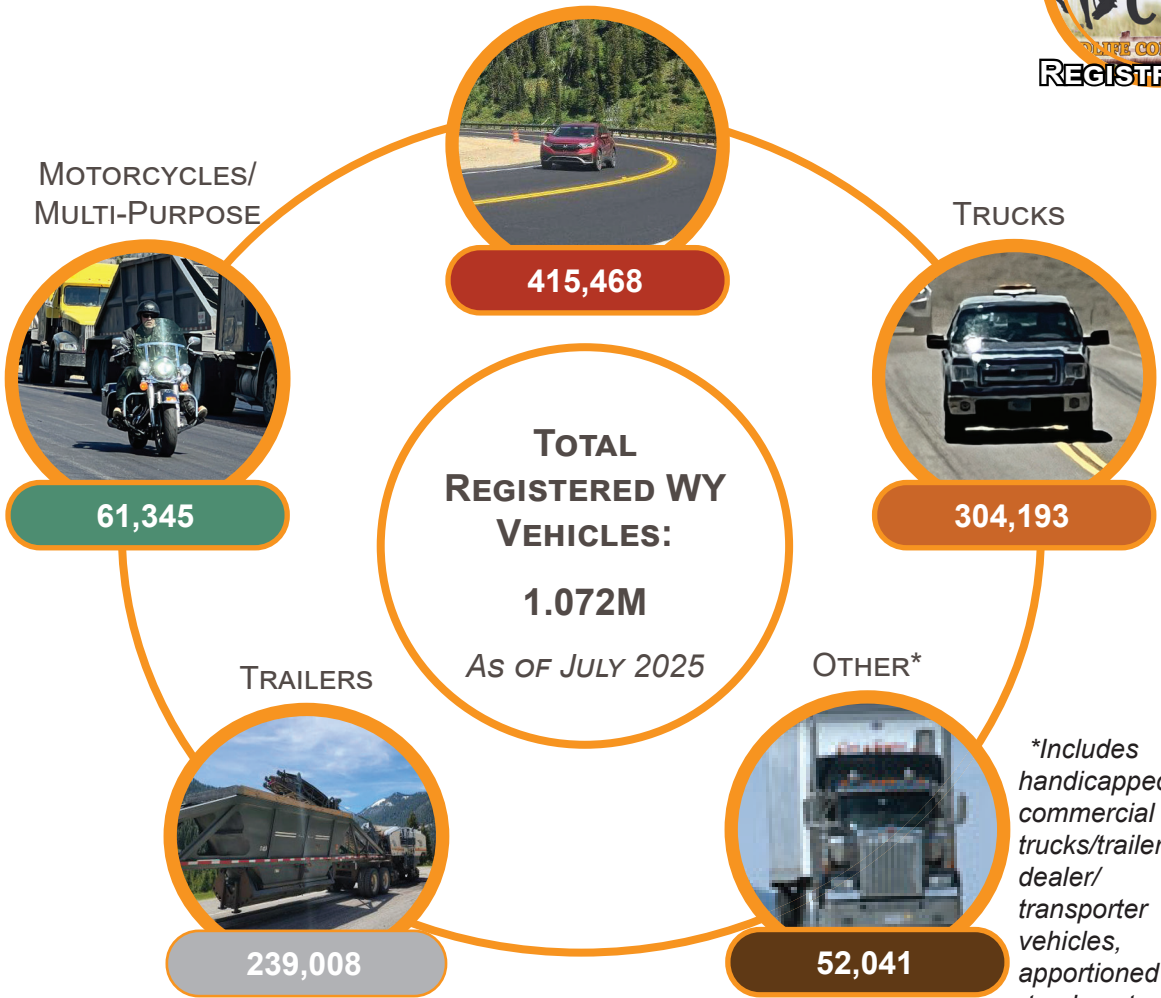
COMMERCIAL
28,499

*Excludes instruction and restricted permits

Source: Driver Services Program



PASSENGER VEHICLES



Source: Motor Vehicle Services Program

*Includes handicapped, commercial trucks/trailers, dealer/transporter vehicles, apportioned trucks, etc