

# MULTIMODAL TRANSPORTATION FACTS

UPDATED DECEMBER 2025



TOTAL WY AIRPORTS: 40

## COMMERCIAL SERVICE AIRPORTS: 9

CASPER/NATRONA INTERNATIONAL	JACKSON HOLE REGIONAL
CHEYENNE REGIONAL	LARAMIE REGIONAL
YELLOWSTONE REGIONAL	CENTRAL WY REGIONAL
NORTHEAST WY REGIONAL	SOUTHWEST WY REGIONAL
	SHERIDAN COUNTY

## BUSINESS AIRPORTS: 11

AFTON-LINCOLN MUNICIPAL	SOUTH BIG HORN COUNTY	SHIVELY FIELD
JOHNSON COUNTY	HUNT FIELD	TORRINGTON MUNICIPAL
CONVERSE COUNTY	RALPH WENZ FIELD	WORLAND MUNICIPAL
EVANSTON-UINTA COUNTY	RAWLINS MUNICIPAL	

## INTERMEDIATE AIRPORTS: 10

MILEY MEMORIAL FIELD	KEMMERER MUNICIPAL	HOT SPRINGS COUNTY
DUBOIS MUNICIPAL	MONDELL FIELD	PHIFER FIELD
FORT BRIDGER	PINE BLUFFS MUNICIPAL	
CAMP GUERNSEY	POWELL MUNICIPAL	

## LOCAL AIRPORTS: 10

NORTH BIG HORN COUNTY	COKEVILLE MUNICIPAL*	MEDICINE BOW*
DIXON	THOMAS MEMORIAL*	SHOSHONI MUNICIPAL*
HULETT MUNICIPAL	GREATER GREEN	UPTON MUNICIPAL*
LUSK MUNICIPAL	RIVER INTERGALACTIC SPACEPORT*	

\*Unpaved

Source: Air Service Development Program



## AIR SERVICE AS OF WINTER 2025

WY HAS 4 CARRIERS SERVING 13 DESTINATIONS (SOME SEASONAL):

ATLANTA	HOUSTON	SAN DIEGO
CHICAGO	LOS ANGELES	SAN FRANCISCO
DALLAS	MINNEAPOLIS	SEATTLE
DENVER	NEWARK	
DULLES	SALT LAKE CITY	

Source: Air Service Development Program

# MULTIMODAL TRANSPORTATION FACTS

UPDATED DECEMBER 2025



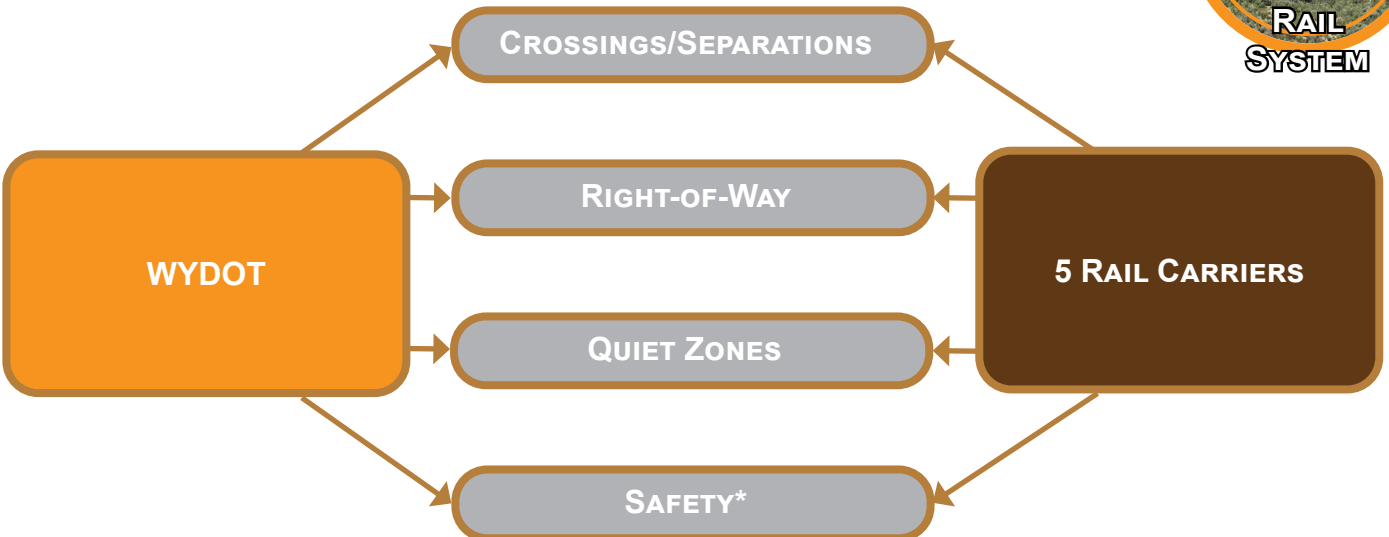
## TYPES OF WYDOT-ADMINISTERED TRANSIT ASSISTANCE



Source: Planning Program

## TYPES OF WYDOT-ADMINISTERED RAIL ASSISTANCE

WYDOT COORDINATES THE FOLLOWING FUNCTIONS WITH RAILROAD CARRIERS OPERATING IN WYOMING



\*Includes fireguards, livestock loss and injury, railroad fencing, etc.

Source: Planning Program



### RAIL FACTS

**WYOMING DOES NOT HAVE PASSENGER RAIL, AND BY THE WYOMING CONSTITUTION, THE STATE OF WYOMING CANNOT OWN OR OPERATE RAIL**