

# WYOMING

## *Transportation Facts 2023-2024*



**WYOMING DEPARTMENT OF TRANSPORTATION**





# Wyoming Transportation Facts

*Published*

**March 2024**

*Twenty-fourth Edition*

*This booklet was compiled in late 2023 and contains the most recent information available. In some cases, that information is from 2022 or earlier.*

*Percentages can vary slightly because of rounding.*

**Wyoming Department of Transportation  
Management Services**

5300 Bishop Boulevard | Cheyenne WY 82009-3340

**[www.dot.state.wy.us](http://www.dot.state.wy.us)**

*Inquiries about this Fact Book may be directed to:*

**John Davis  
(307) 777-4158**

*Cover photos: WYDOT archive photos*

*Graphic design: Carlie Dakins*

# Table of Contents

## General Information

WYDOT Purpose, Mission, Vision, Values, and Goals .....	1
Organization Chart .....	2
Department Contacts .....	3
Transportation Commission .....	4
Aeronautics Commission .....	5
Public Safety Communications Commission .....	6
District Engineers .....	7
Patrol Districts and Divisions.....	8-9
Road & Travel Information	
Road and Travel .....	10-11

## Licensing Information

License Plate, Registration, and Title Information.....	12
Driver's License Exam Stations and Registered Vehicles .....	13
Driver's Licenses Issued.....	14

## Miles Traveled

Vehicle Miles Traveled in Wyoming and other states .....	14-15
--	-------

## Fatality Rates

Fatality Rates .....	16
Traffic Fatalities and Alcohol Involved Crashes.....	17
Crash Facts .....	18
Seat Belt Usage.....	19
Non-Restrained Fatalities.....	19

## Finances

Highway Improvement Expenditures .....	20
WYDOT Total Revenue .....	21
Revenue By Source .....	21
WYDOT Expenditures .....	22
Motor Fuel Tax Collections.....	23
Distribution of Fuel Taxes .....	24
Motor Fuel Tax Receipts.....	25
Fuel Consumption .....	25
Gasoline Tax Distribution.....	26
Diesel Tax Distribution.....	26
State and Federal Funding .....	27
Impacts of Inflation.....	27

# Table of Contents

## Emergency Communications

WyoLink.....	28
--------------	----

## Trucking Information

Truck Size and Weight Limits .....	29
Ports of Entry.....	29

## Road Information

Road Improvement Costs .....	30
System Size vs. Use.....	30
Federal Aid Highway System vs. Public Road Miles.....	31
Percentage of Construction Jobs Completed on Time.....	32
Annual Cost Underrun/Overrun as Percentage.....	32
Road Deterioration vs. Time.....	33
State Highway System Performance Trends.....	34
Pavement Condition and Improvement.....	35
State Highway Percentages and Pavement Types.....	36
Traffic Levels.....	37

## Bridge Information

Bridge Conditions.....	38-40
------------------------	-------

## Other Transportation Modes

Wyoming Rail System .....	41
WYDOT Transit Program .....	41-42
Public Transit Information.....	42-43
Public Transit Ridership.....	44
Wyoming Airport System .....	45-46
Total Wyoming Airport Passengers .....	47
Statewide Airport Economic Impact .....	48

## Other Maps

Wyoming Flight Route Map.....	49
Rest Area and Scenic Byways Map .....	50
National Highway System .....	51

## Other

WYDOT History in Brief.....	52
-----------------------------	----

# WYDOT Purpose, Mission, Vision, Values, and Goals

## **Purpose**

Support Wyoming's economy and quality of life while safely connecting communities

## **Mission**

Provide a safe and effective transportation system

## **Vision**

Excellence in transportation

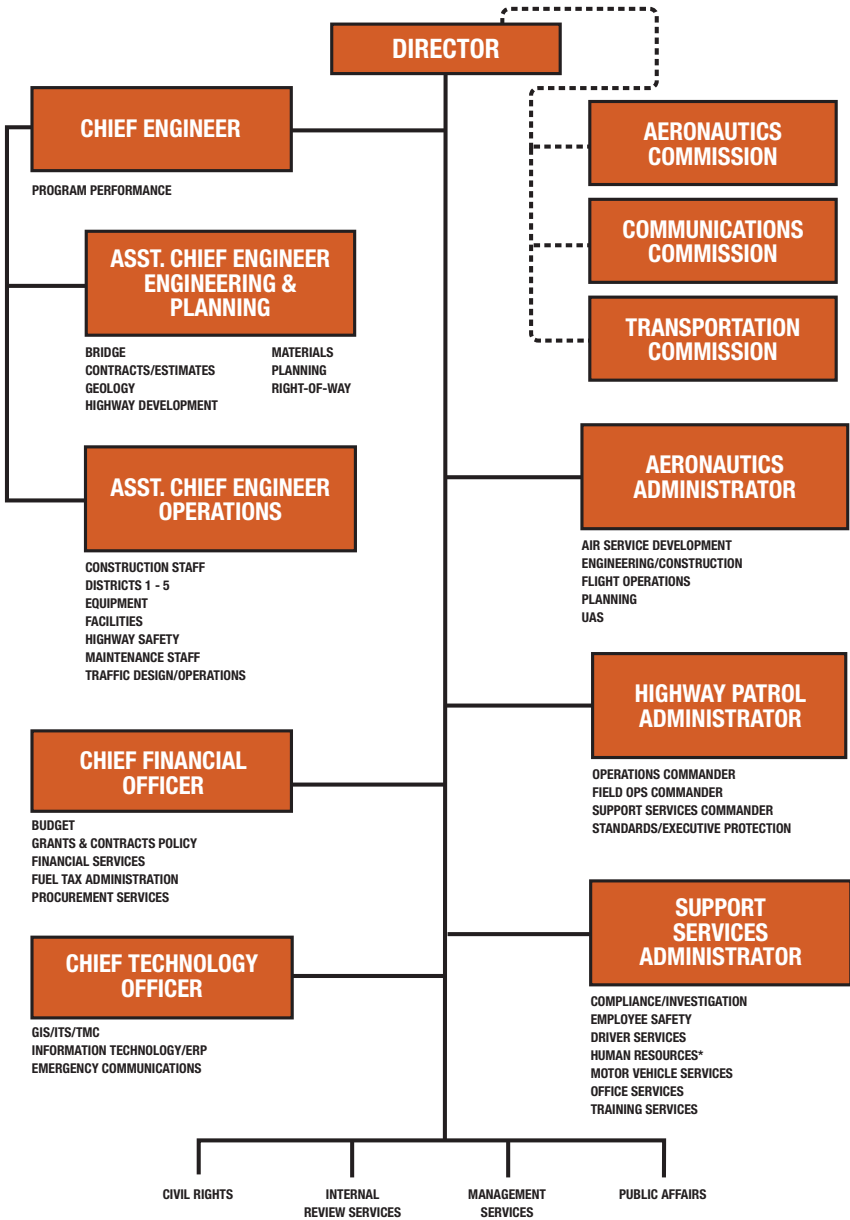
## **Values**

- Respect
- Integrity
- Dedication
- Excellence
- Safety

## **Strategic Objectives**

- Serve our Customers
- Ensure Transparency and Public Engagement
- Value our Team
- Develop and Maintain Strategic Partnerships
- Appropriately Manage Resources
- Continually Improve and Innovate

# WYDOT Organization Chart



\* Administered through A&I Human Resources Division



# Department Contacts

## **Director**

*Darin Westby, P.E.* .....(307) 777-4484

## **Chief Engineer**

*Mark Gillett, P.E.* .....(307) 777-4484

### **Assistant Chief Engineer, Engineering & Planning**

*Keith Fulton, P.E.* .....(307) 777-4484

### **Assistant Chief Engineer, Operations**

*Tom DeHoff, P.E.* .....(307) 777-4484

## **Chief Financial Officer**

*Dennis Byrne* .....(307) 777-4484

## **Chief Technology Officer**

*Nate Smolinski*.....(307) 777-4484

## **Support Services Administrator**

*Taylor Rossetti* .....(307) 777-4484

## **Aeronautics Administrator**

*Brian Olsen, P.E.* .....(307) 777-3952

## **Highway Patrol Administrator**

*Col. Tim Cameron* .....(307) 777-4301

*Information Desk* ..... (307) 777-4375

*WYDOT Website*..... [www.dot.state.wy.us](http://www.dot.state.wy.us)

# Transportation Commission of Wyoming



- District 1 – Pat Crank** (307) 630-7998  
*1815 Evans Avenue, Cheyenne, WY 82001*
- District 2 – Brandt Lyman** (307) 389-7395  
*506 Cheyenne Drive, Rock Springs, 82901*
- District 3 – Jon Dolezal** (307) 679-5156  
*1037 Summit Street, Evanston, WY 82930*
- District 4 – Susan Holmes** (307) 672-2976  
*1472 Warren Avenue, Sheridan, WY 82801*
- District 5 – Micheal Baker** (307) 921-1653  
*920 West Sunnyside Lane, Thermopolis, 82443*
- District 6 – Mark Hughes** (307) 290-1313  
*P.O. Box 456, Sundance, WY 82729*
- District 7 – Jim Willox** (307) 351-3242  
*451 Brownfield Road, Douglas, 82633*
- Commission Secretary – Caitlin Casner** (307) 777-4007  
*5300 Bishop Boulevard, Cheyenne, WY 82009-3340*

# Wyoming Aeronautics Commission

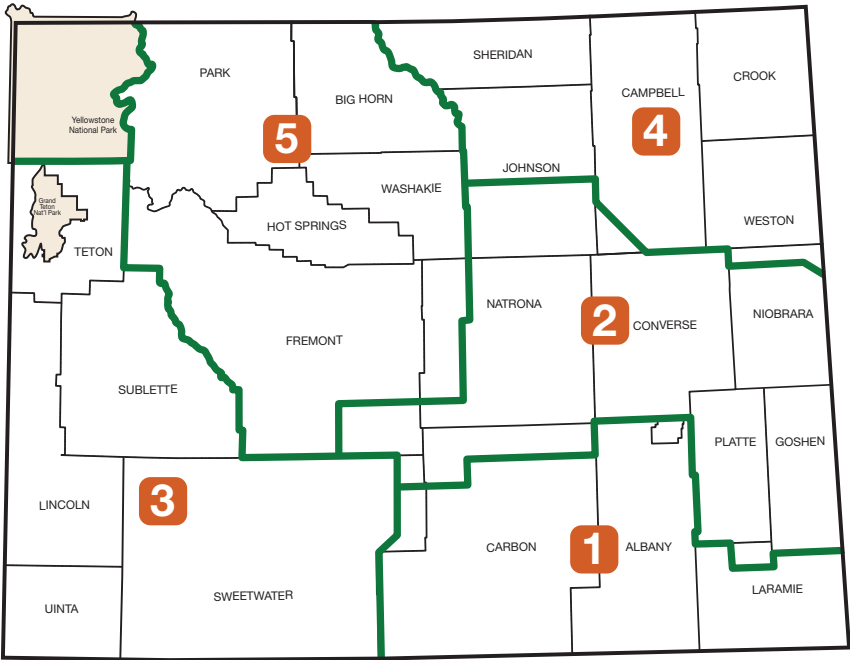


- District 1 – Dean McClain** (307) 575-4925  
*1031 E. 24th Avenue, Torrington, WY 82240*
- District 2 – Jerry Blann** (307) 690-2617  
*P.O. Box 256, Teton Village, WY 83025*
- District 3 – Bill DeVore** (307) 262-1350  
*4113 West Yellowstone Highway, Casper, WY 82604*
- District 4 – Bruce McCormack** (307) 899-4234  
*2325 Newton Avenue, Cody, WY 82414*
- District 5 – Steve Maier** (307) 763-6745  
*4 Harlequin, Sheridan, WY 82801*
- At Large – Sigsbee Duck** (307) 699-5248  
*3451 Boxelder Place, Wilson, WY 83014*
- At Large – Randy Harrop** (307) 359-0730  
*84 Fairway Drive, Douglas, WY 82633*
- Commission Secretary – Kimberly Chapman** (307) 777-4015  
*5300 Bishop Boulevard, Cheyenne, WY 82009-3340*

# Wyoming Public Safety Communications Commission

<b>Fire Chiefs' Association – Mark Harshman, Chair</b> <i>200 North David, Casper, WY 82601</i>	(307) 235-8324
<b>DCI/Attorney General – Matt Waldo</b> <i>951 Werner Court, Suite #205, Casper, WY 82601</i>	(307) 689-0109
<b>Police Chiefs – Dwane Pacheco, Secretary</b> <i>221 C Street, Rock Springs, WY 82901</i>	(307) 352-1581
<b>Sheriffs – Matt Carr</b> <i>P.O. Box 1885, Jackson, WY 83001</i>	(307) 413-1989
<b>Game and Fish – Mike Choma</b> <i>3030 Energy Lane, Suite 100, Casper, WY 82604</i>	(307) 473-3417
<b>WYDOT – Karl Germain</b> <i>5300 Bishop Boulevard, Cheyenne, WY 82009</i>	(307) 777-4318
<b>Emergency Medical Services – Phillip Franklin</b> <i>74 Road 3CXS, Cody, WY 82414</i>	(307) 250-4529
<b>Municipalities – John Wetzel</b> <i>1001 Ponderosa Court, Powell, WY 82435</i>	(307) 272-0085
<b>Counties – Paul Bertoglio</b> <i>950 Waterford, Casper, WY 82601</i>	(307) 262-2395
<b>Tribal – Owen St. Clair</b> <i>17 Fort Washakie School Road, Fort Washakie, WY 82514</i>	(307) 349-1305
<b>At Large – Rick Kaysen</b> <i>223 Stetson Drive, Cheyenne, WY 82009</i>	(307) 287-4218
<b>APCO/NENA – Monte McClain, Vice Chair</b> <i>335 Grand Street, Powell, WY 82435</i>	(307) 272-4678
<b>Wyoming Office of Homeland Security – Cindi Shank</b> <i>5500 Bishop Boulevard, Cheyenne, WY 82009</i>	(307) 631-8590
<b>Ex Officio – Darin Westby, WYDOT Director</b> <i>5300 Bishop Boulevard, Cheyenne, WY 82009</i>	(307) 777-4484
<b>Commission Secretary – Kimberly Chapman</b> <i>5300 Bishop Boulevard, Cheyenne, WY 82009-3340</i>	(307) 777-4015

# District Engineers



## District 1

Ralph Tarango

(307) 745-2100

3411 S. 3rd Street, Laramie, WY 82070

## District 2

Mark Ayen

(307) 473-3200

900 Bryan Stock Trail, Casper, WY 82601

## District 3

John Eddins

(307) 352-3000

3200 Elk Street, Rock Springs, WY 82901

## District 4

Scott Taylor

(307) 674-2300

10 East Brundage Lane, Sheridan, WY 82801

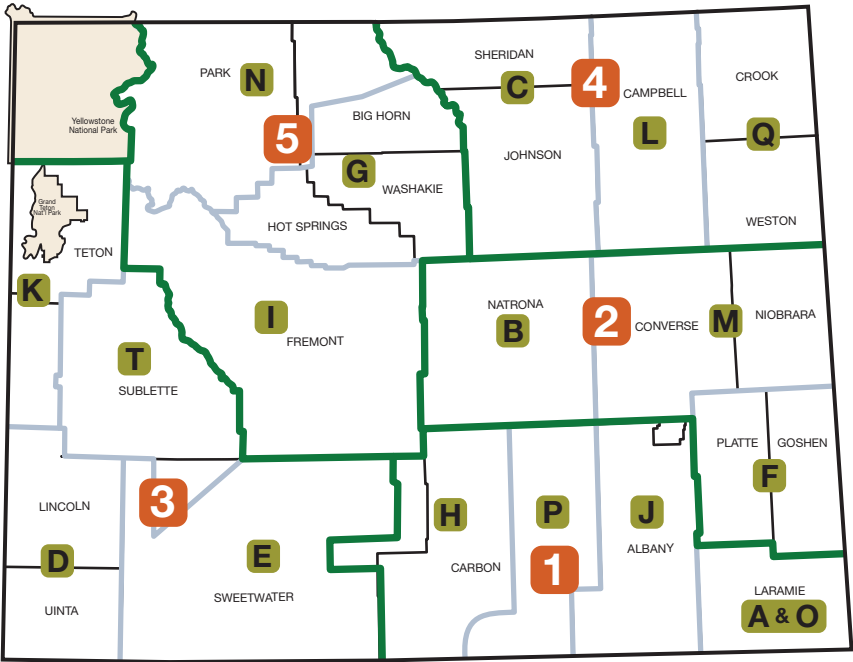
## District 5

Pete Hallsten

(307) 568-3400

218 West C Street, Basin, WY 82410

# Wyoming Highway Patrol Districts and Divisions



- District 1 – Capt. Michael Simmons** (307) 777-4875  
5300 Bishop Boulevard, Cheyenne, WY 82009-3340
- District 2 – Capt. Shawn Dickerson** (307) 473-3231  
900 Bryan Stock Trail, Casper, WY 82601
- District 3 – Mark Russell** (307) 352-3110  
3200 Elk Street, Rock Springs, WY 82901
- District 4 – Capt. Benjamin Schlosser** (307) 674-2317  
10 East Brundage Lane, Sheridan, WY 82801
- District 5 – Capt. Jeramy Pittsley** (307) 568-3447  
218 West C Street, Basin, WY 82410
- Commercial Carrier – Capt. KC Ramsey** (307) 777-4310  
5300 Bishop Boulevard, Cheyenne, WY 82009-3340

# Wyoming Highway Patrol Districts and Divisions

Division	Station Office	Phone
Headquarters	Cheyenne	(307) 777-4314
A	Cheyenne	777-8976
B	Casper	473-3235
C	Sheridan	674-2390
D	Evanston	789-3119
E	Rock Springs	352-3110
F	Wheatland	322-6545
G	Worland	347-6545
H	Rawlins	328-4101
I	Lander	332-4155
J	Laramie	745-2126
K	Jackson	733-3869
L	Gillette	686-1131
M	Douglas	358-6862
N	Cody	587-9729
O	Cheyenne-EPD	777-8910
P	Elk Mountain	348-7770
Q	Sundance	283-1642
T	Pinedale	367-4422
Dispatch	Cheyenne	777-4321

# Road and Travel Information

## Phone Numbers:

Toll-free

Dial 511 (in state)  
(888) WYO-ROAD / (888) 996-7623

## Website:

[www.wyoroad.info](http://www.wyoroad.info)

## App:

*Wyoming 511* is the official road condition and traffic information reporting app of the Wyoming Department of Transportation.



## Emergency Phone Numbers:

Wyoming Highway Patrol, REDDI (Report Every Drunk Driver Immediately) and all other emergencies

**911**

Toll Free within Wyoming:

**(800) 442-9090**

Cellular phone calls from within Wyoming:

**#HELP (#4357)**

## Road Closures:

Roads in Wyoming may close at any time because of crashes or dangerous traveling conditions, including icy roads, blowing snow, hazardous materials spills, fires, snowslides, landslides, or limited visibility.

The maximum penalty in Wyoming for willfully failing to observe road closure gates or other closure signs, markers, warnings, notices, or directions is a \$750 fine and 30 days in jail (W.S. 24-1-109).

## Reminder:

- Conditions at road closure gates may differ from conditions a few miles down the road.
- It is against the law to drive on a closed road without authorization.
- The safest option is to return to the nearest city or town and wait for the road to open.



# Road and Travel Information

## Other Numbers:

Colorado	(303) 639-1111
Idaho	(888) IDA-ROAD (888) 432-7623
Montana	(800) 226-ROAD (800) 226-7623
Nebraska	(800) 906-9069
South Dakota	(866) MYSD511 (866) 697-3511
Utah	(866) 511-UTAH (866) 511-8824
Yellowstone National Park	(307) 344-2117

The methods WYDOT uses to transmit road and travel information continue to evolve with technology.

## Pre-trip Statistics 2022



### 511 Notify

About  
118,000  
subscribers  
31 million  
messages



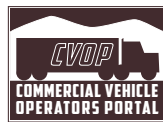
### Web hits

2.2 billion  
web hits



### 511 Calls

More than  
250,000  
calls to the  
511 system



### CVOP

About 2,600  
registered  
users



### 511 app

More than  
530,000  
unique  
users

Source: GIS/ITS

# License Plate, Registration, and Title Information

In Wyoming, license plates are issued by the county treasurer's office in each county. Title information may be obtained from the county clerk's office. The county numbers represent the first number on license plates issued in that county.

County	County Seat	County Treasurer (License Plates)	County Clerk (Titles)	Cnty #
Albany	Laramie	(307) 721-2502	(307) 721-2541	5
Big Horn	Basin	568-2578	568-2357	9
Campbell	Gillette	682-7268	682-7285	17
Carbon	Rawlins	328-2633	328-2668	6
Converse	Douglas	358-3120	358-2244	13
Crook	Sundance	283-1244	283-1323	18
Fremont	Lander	332-1104	332-2405	10
Goshen	Torrington	532-5151	532-4051	7
Hot Springs	Thermopolis	864-3616	864-3515	15
Johnson	Buffalo	684-7302	684-7272	16
Laramie	Cheyenne	633-4232	633-4247	2
Lincoln	Kemmerer	877-9056	877-9056	12
Natrona	Casper	235-9370	235-9211	1
Niobrara	Lusk	334-2432	334-2211	14
Park	Cody	527-8630	527-8600	11
Platte	Wheatland	322-2092	322-2315	8
Sheridan	Sheridan	674-2520	674-2500	3
Sublette	Pinedale	367-4373	367-4372	23
Sweetwater	Green River	872-3720	872-3737	4
Teton	Jackson	733-4770	733-4433	22
Uinta	Evanston	783-0333	783-0306	19
Washakie	Worland	347-2031	347-3131	20
Weston	Newcastle	746-2852	746-4744	21

# Driver License Exam Stations

Baggs	383-2000
Basin	568-2529
Big Piney	276-3059
Buffalo	684-5809
Casper	473-3333
Cheyenne	777-3835
Cody	587-3346
Douglas	358-7190
Dubois	455-3140
Evanston	789-2257
Gillette	682-2671
Jackson	733-4571
Kemmerer	877-9372
Lander	332-9858

Laramie	745-2225
Lovell	548-2494
Lusk	334-2098
Newcastle	746-2690
Pinedale	367-4381
Rawlins	328-4102
Riverton	856-3202
Rock Springs	352-3001
Sheridan	672-5924
Sundance	283-2557
Thayne	883-5003
Thermopolis	864-9407
Torrington	532-1270
Wheatland	322-6509
Worland	347-6528

## Number of Currently Registered Vehicles in Wyoming July 31, 2023

Passenger	382,925
Trucks	271,154
Motorcycles	27,231
Multipurpose Vehicles	27,639
University of Wyoming (Alumni)	7,049
Handicapped	5,280
Trailer	219,838
County Commercial Truck	11,211
County Commercial Trailer	9,524
Other (Dealer and Transporter)	4,058
Apportioned Truck	8,420
Trailers used with Apportioned Truck	3,472
<b>Total</b>	<b>977,801</b>

Source: Motor Vehicle Services Program

# Wyoming Licenses

## Number of Licensed Drivers in Wyoming – December 2022

Non-Commercial	445,671
Commercial	30,135
<b>Total</b>	<b>475,806</b>

Source: Driver Services Program

## Top States For Per Capita Vehicle Miles Traveled – 2023

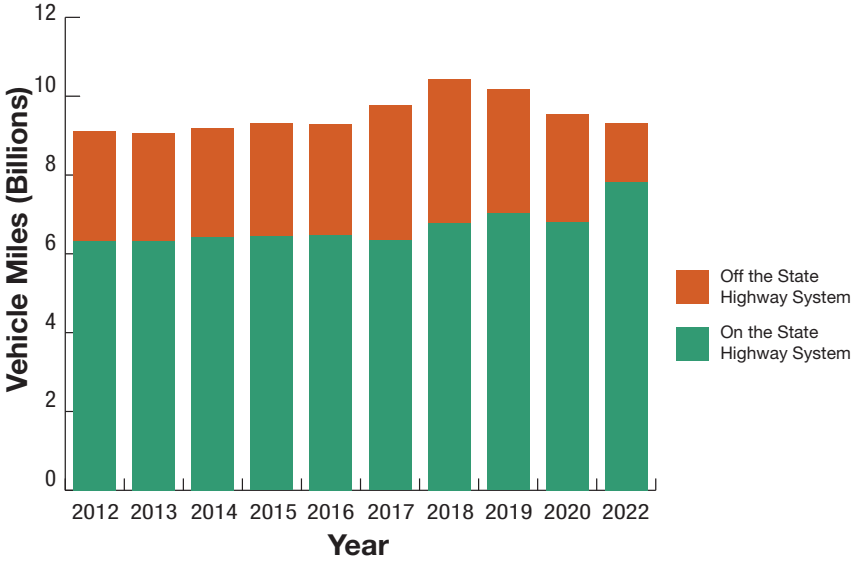
State	Miles Per Capita
Wyoming	18,999
Alabama	14,073
Mississippi	13,897
Missouri	12,877
New Mexico	12,686
Arkansas	12,526
Louisiana	11,966
Montana	11,901
North Dakota	11,807
Tennessee	11,590
<b>National Average 2023</b>	<b>9,930</b>

Population and VMT 2023

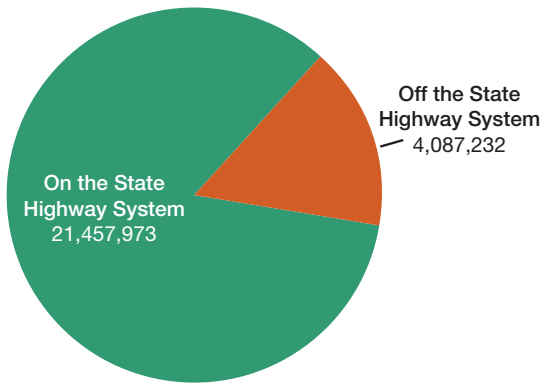
Source: Management Services Program

# Vehicle Miles Traveled in Wyoming

## Average Yearly Vehicle Miles Traveled in Wyoming 2022 – 9.32 Billion

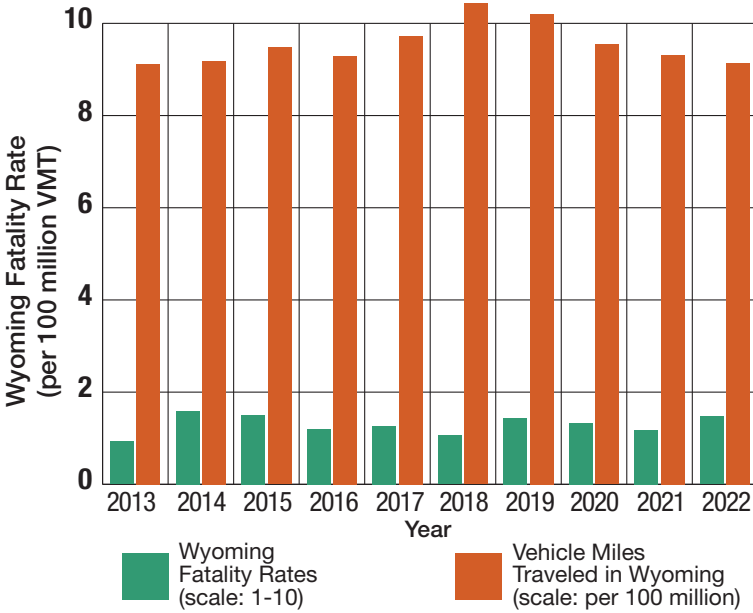


## Average Daily Vehicle Miles Traveled in Wyoming 2022 – 25,545,205

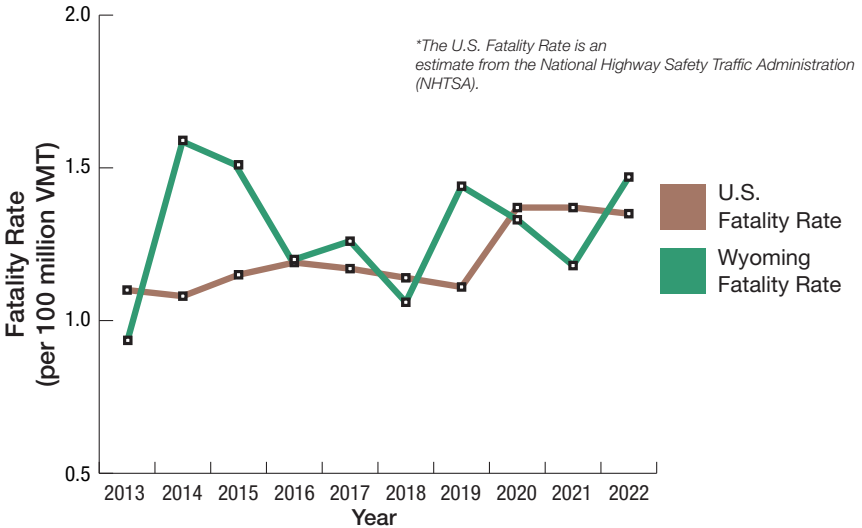


Source: Planning Program

# Fatality Rates vs. Vehicle Miles Traveled (VMT)

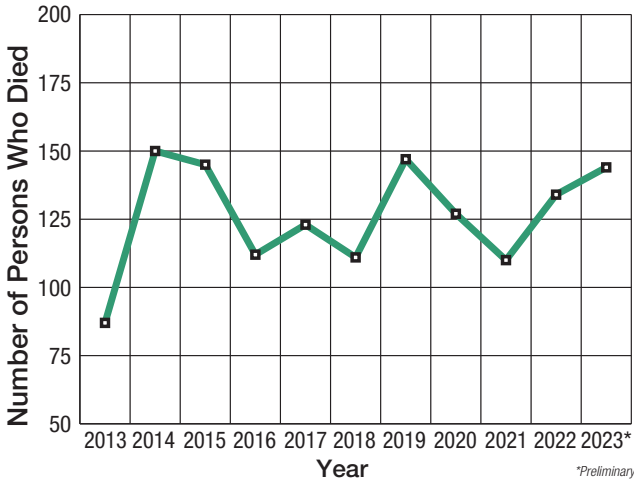


## Wyoming vs. U.S. Fatality Rates

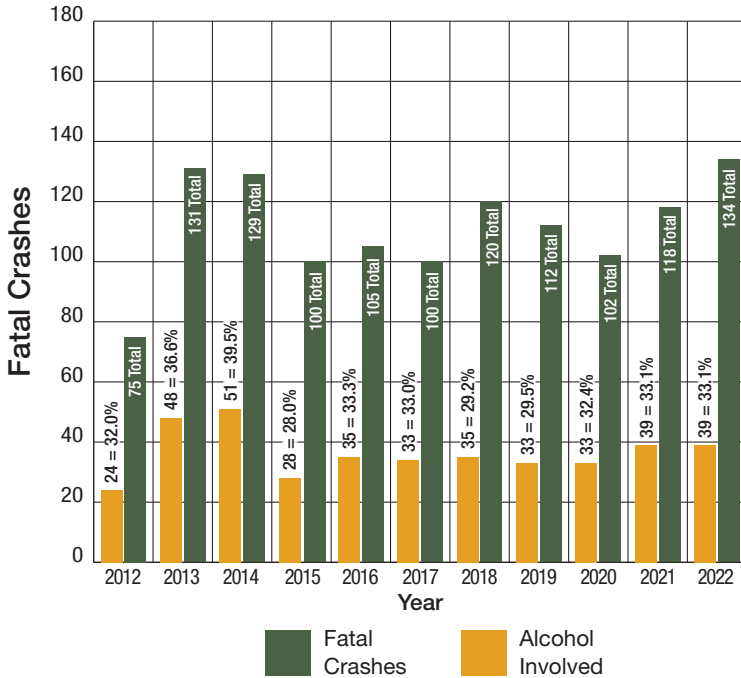


Source: Highway Safety Program/NHTSA

# Wyoming Traffic Fatalities



## Fatal Crashes and Alcohol-Involved Fatal Crashes



Source: Highway Safety Program

# Crash Facts

## 2021 (2022) Wyoming Traffic Crash Quick Facts

### Total Traffic Crashes

13,897 (13,576)

### Total Persons Injured (Non-Fatally)

3,267 (3,138)

### How many drivers were involved?

19,671 (19,435)

### How many vehicles were involved?

21,187 (20,844)

### What type of fatal crashes occurred most often?

Contact with another motor vehicle in transport on road

### How many crashes involved 14-20 year old drivers?

2,502 (2,568)

### How many crashes involved medium/heavy trucks?

1,609 (1,744)

### How many crashes involved school buses?

43 (50)

### How many crashes involved motorcycles?

232 (246)

### In what month did the most crashes occur?

December (December)

### On what day of the week did the most crashes occur?

Friday (Friday)

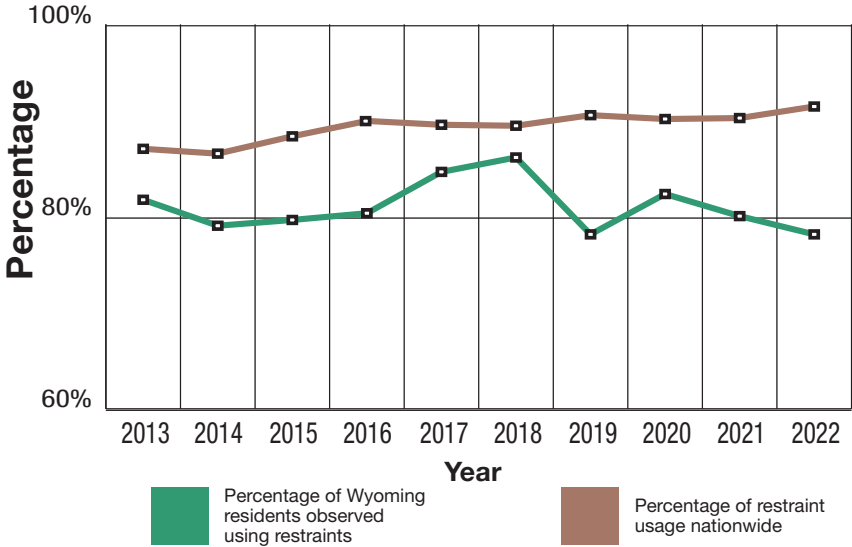
### What percentage of crash fatalities was not restrained?

60 percent (64 percent)

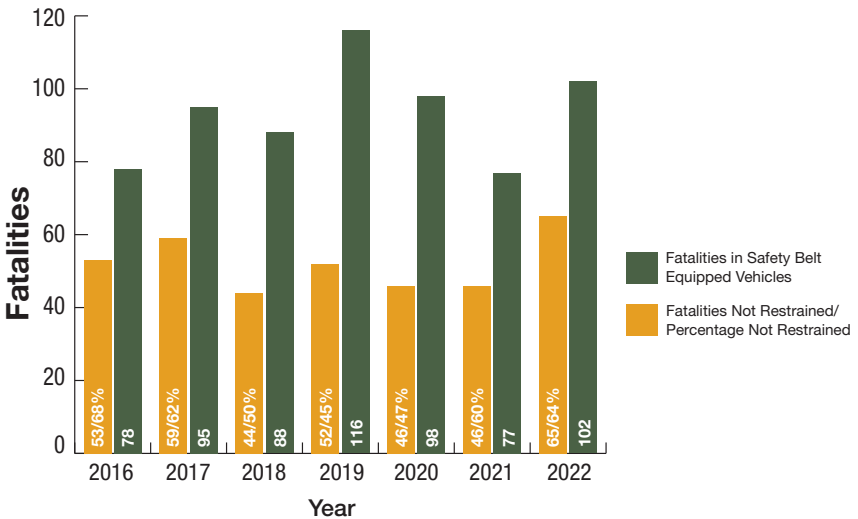
Source: Highway Safety Program



# Seat Belt Usage



## Non-Restrained Fatalities

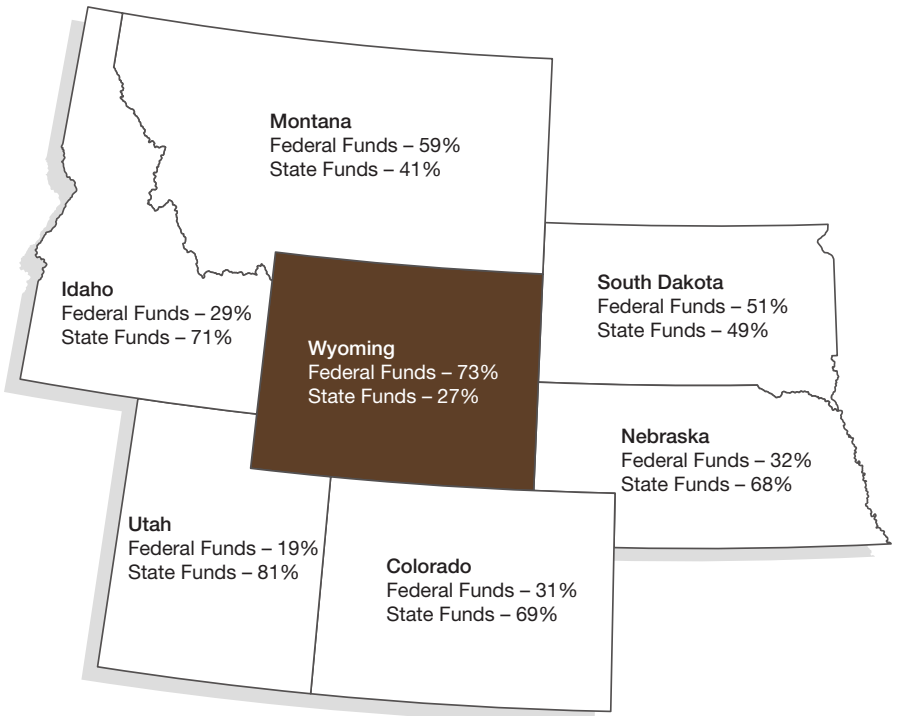


Note: Data regarding seat belt usage is derived from the Investigator's Traffic Crash Report. It includes drivers and passengers only. It excludes the following vehicles where seat belts are not normally found: motorcycles, off road motorcycles, farm equipment, construction vehicles, mopeds, snowmobiles, ATVs, MPVs, motorized skateboards/scooters, wheelchairs, low speed vehicles, and Segways.

Source: Highway Safety Program

# Highway Improvement Expenditures

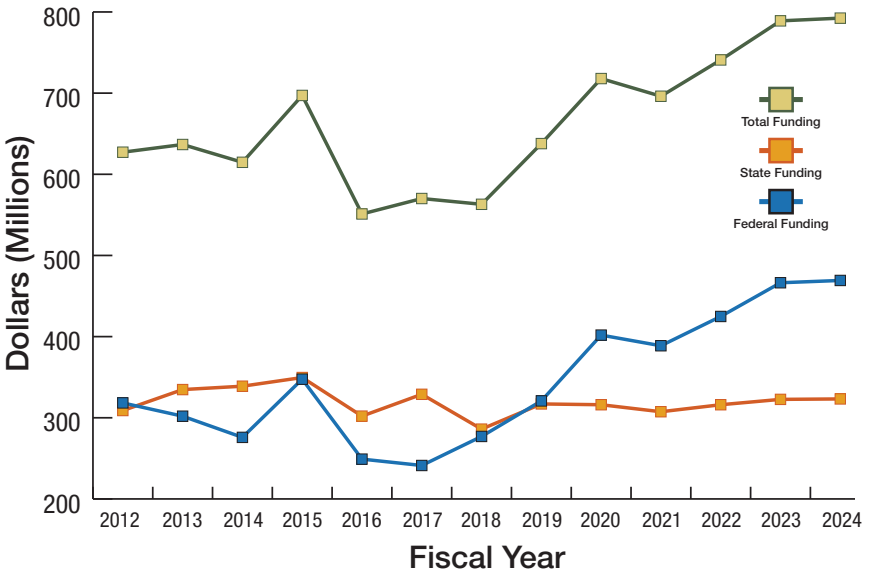
## Wyoming and its neighboring states' Federal Funds vs. State Funds 2021



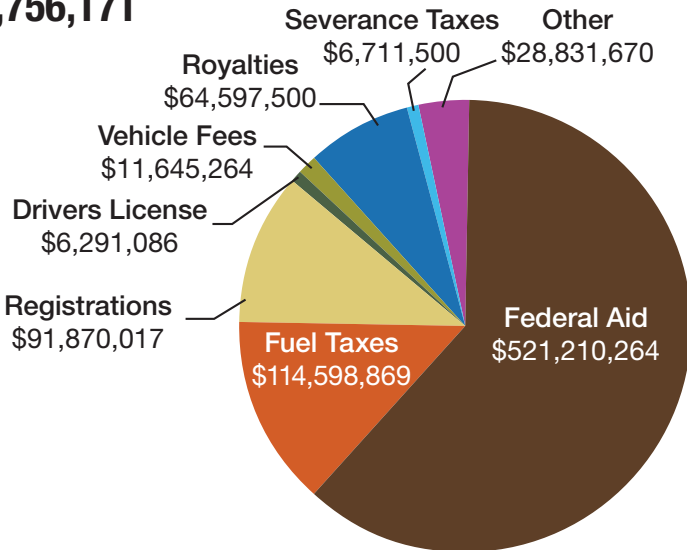
**National Average is 31% Federal and 69% State Funding**

Source: FHWA Annual Statistics

# WYDOT Total Revenue



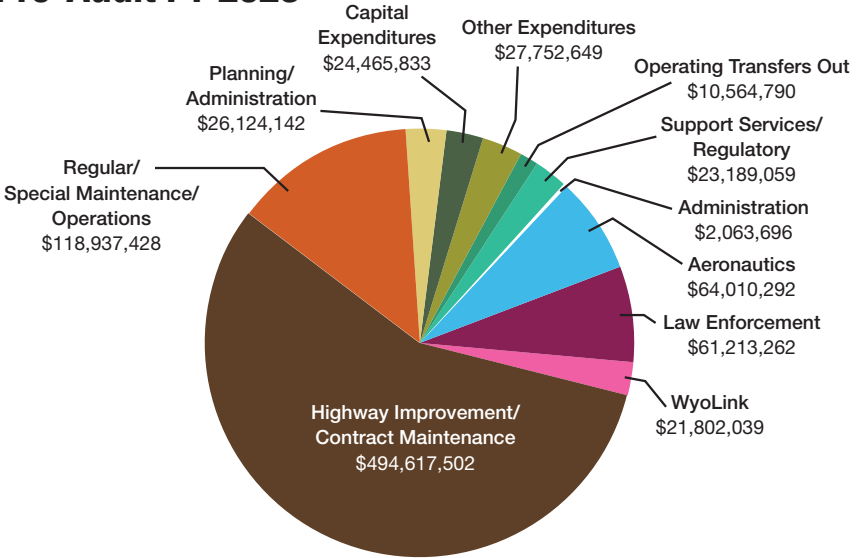
## Revenue By Source FY 2023 Total Revenue – \$845,756,171



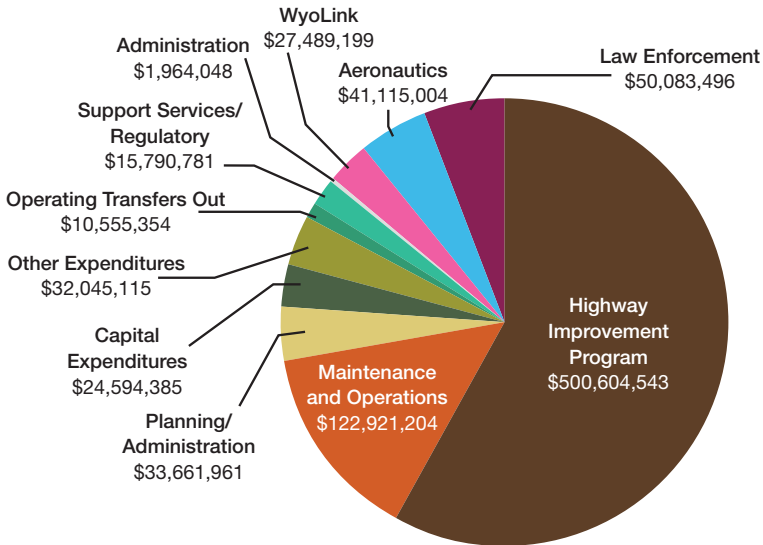
Source: Budget Program/Financial Services

# WYDOT Expenditures

## Pre-Audit FY 2023



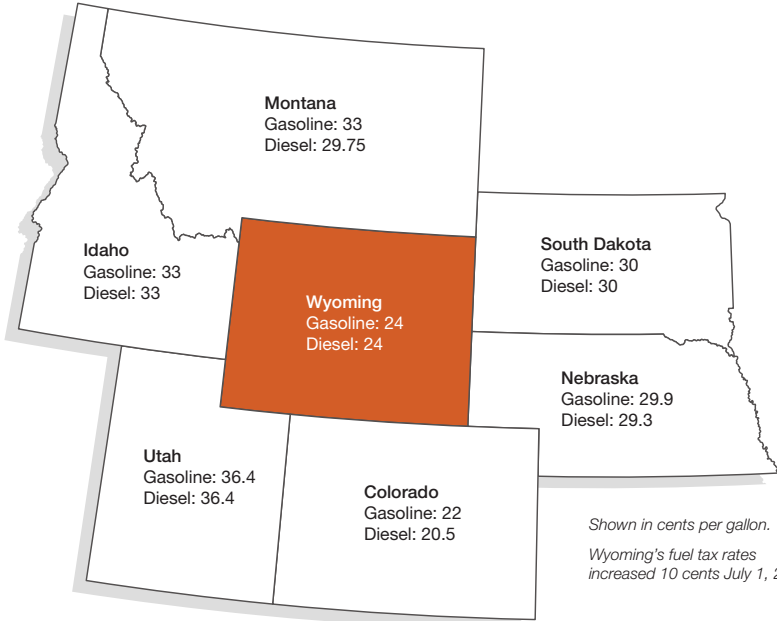
## Projected Expenditures: \$860,825,090 – FY 2024



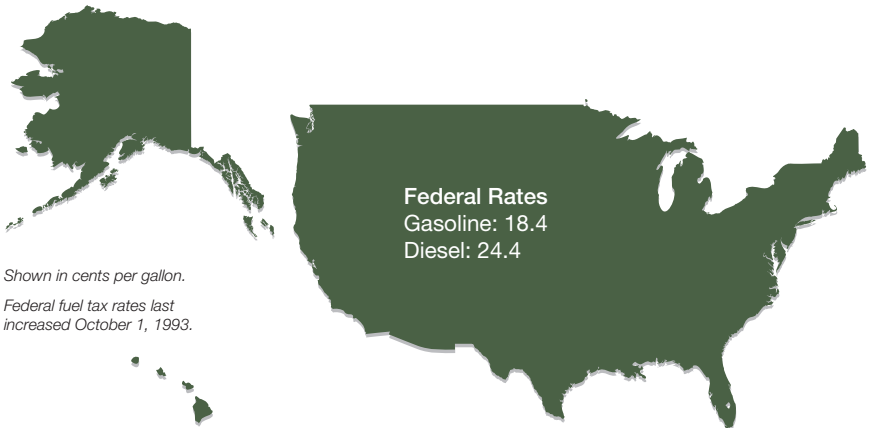
Source: Budget Program/Financial Services

# Motor Fuel Tax Collections

## Wyoming and its neighboring states' gasoline and diesel fuel tax rates



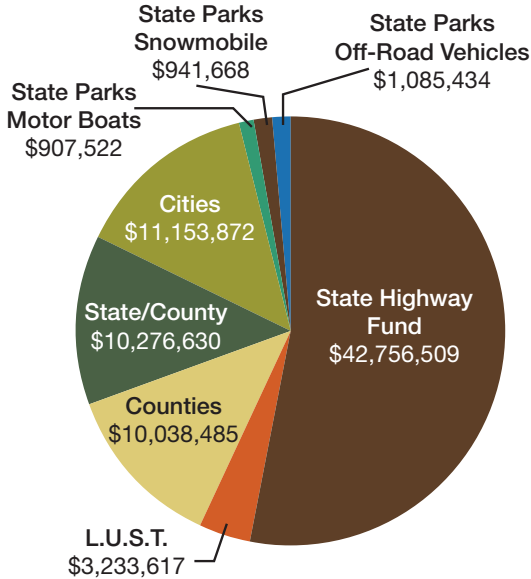
## Federal gasoline and diesel fuel tax rates



Source: Budget Program

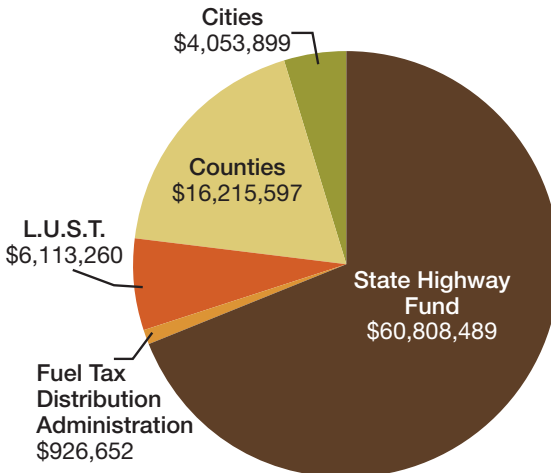
# Distribution of Fuel Taxes

## Gas Tax Total: \$80,393,737 – FY 2023



L.U.S.T. = Leaking Underground Storage Tanks

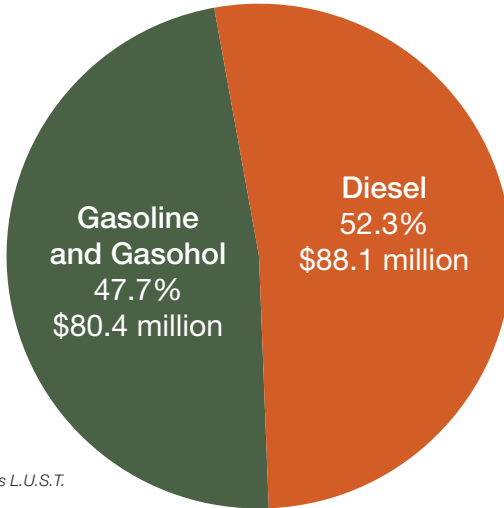
## Special Fuels Diesel Tax Total: \$88,117,897 – FY 2023



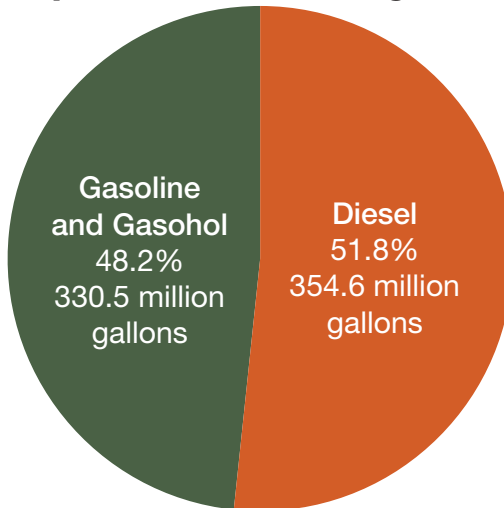
Source: Budget Program/Financial Services/Fuel Tax Administration

# Motor Fuel Tax Receipts

**Total Receipts: \$168.5 million – FY 2023**



**Total Consumption: 685.1 million gallons – FY 2023**

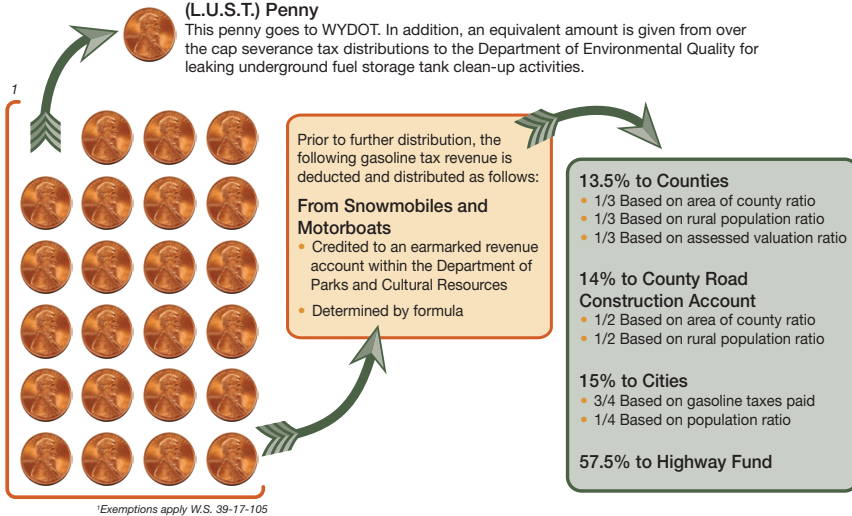


*Note: Tax receipts include all motor fuels. Fuel consumption is limited to highway use – L.U.S.T., off-road use, and refunds to other jurisdictions are not included.*

*Source: Budget Program/Financial Services/Fuel Tax Administration*

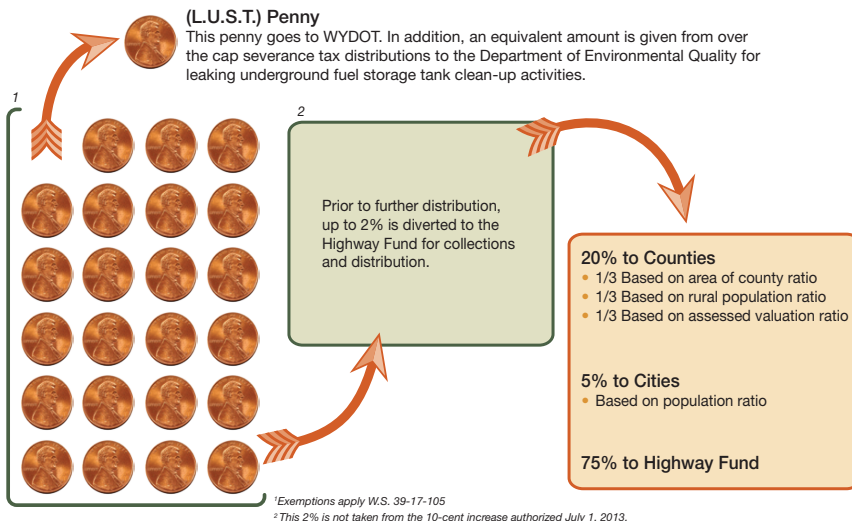
# Gasoline Tax Distribution

## 24-Cent Gasoline Tax Distribution



# Diesel Tax Distribution

## 24-Cent Diesel Tax Distribution

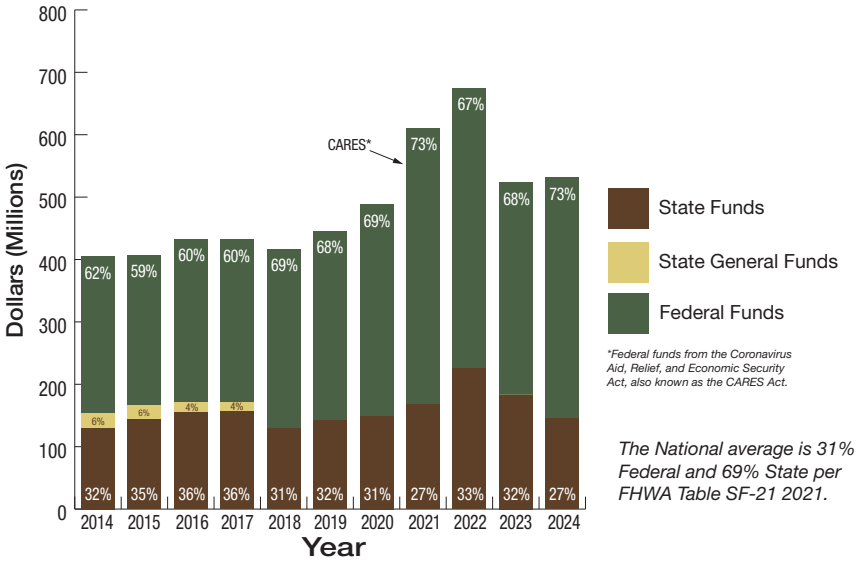


Source: Budget Program

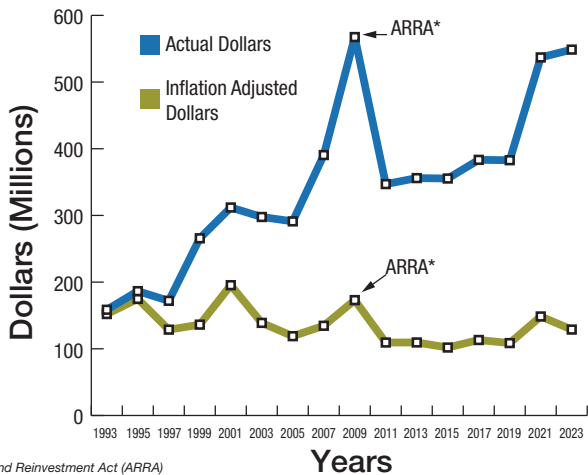


# State and Federal Funding

## State Highway Improvements as Percentage of Total Program – Actual or Anticipated Obligations



## Impacts of Inflation



*\*Federal funds from the American Recovery and Reinvestment Act (ARRA)*

Source: Budget Program

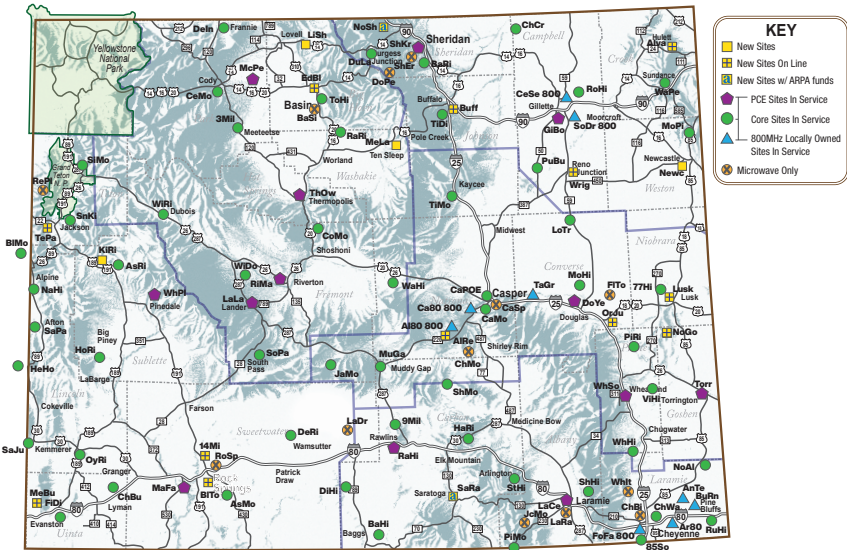
# WyoLink

WYDOT administers WyoLink, Wyoming's Statewide, Public Safety, Interoperable Radio Communications System, which provides communications for public safety and service agencies across Wyoming. The system is interoperable, meaning that agencies can directly communicate with each other in larger scale events and operations – whether nearby or across the state.

WyoLink's 16,000 users initiate about 21.7 million calls across Wyoming annually. Currently more than 500 agencies use WyoLink, with new users continually added.

- 2 federal agencies;
- 68 emergency medical services;
- 20 Wyoming state agencies;
- 44 educational institutions;
- 144 local government agencies;
- 94 law enforcement agencies;
- 11 out-of-state;
- 118 fire protection agencies;
- 19 private entities (mine rescue and Life Flight); and
- Bureau of Indian Affairs and the Wind River Indian Reservation

## WyoLink Local Towers and Locations Site Map



# Truck Size and Weight Limits

- Legal Width:** 8 ft., 6 in.  
**Legal Height:** 14 ft., 0 in.  
**Legal Length:** 60 ft. *For single units or semi-trailers in a truck-tractor and semi-trailer combination.*  
81 ft. *For a semi-trailer, trailer, or double semi-trailer combined length in a truck-tractor and semi-trailer, trailer, or double semi-trailer combination including the connecting mechanism.*  
85 ft. *Any combination of vehicles other than those listed above.*  
No combination of vehicles may consist of more than three single vehicles.
- Legal Axle Weights:** Single axle – 20,000 lbs.  
Tandem axle – 36,000 lbs.  
Triple axle – 42,000 lbs.

**For oversize or overweight load information call (307) 777-4376 or (307) 777-4747 or visit [www.whp.dot.state.wy.us](http://www.whp.dot.state.wy.us)**

*Notice: Information subject to change.*

## Ports of Entry

### Alpine

(307) 654-7569

### Casper

(307) 473-3280

### Cheyenne

I-25

(307) 777-4896

I-80

(307) 777-4894

US 85

(307) 777-4895

### Evanston

(307) 789-3538

### Frannie

(307) 664-2389

### Gillette

(307) 682-4030

### Kemmerer

(307) 877-4229

### Laramie

(307) 745-2200

### Lusk

(307) 334-3814

### Sheridan

(307) 674-2350

### Sundance

(307) 283-1616

### Torrington

(307) 532-2519

*Source: Wyoming Highway Patrol's Commercial Carrier Section*

# Road Preservation, Resurfacing, and Reconstruction

One mile of road in Wyoming costs the following:

2-lane bituminous maintenance rehabilitation:  
\$150,000 to \$250,000

4-lane (interstate) bituminous maintenance rehabilitation:  
\$300,000 to \$1,250,000

One mile of road in Wyoming costs the following:

2-lane bituminous overlay/minor rehabilitation:  
\$350,000 to \$1,250,000

4-lane bituminous overlay/minor rehabilitation:  
\$850,000 to \$3,000,000

Major rehabilitation/reconstruction of one mile of road in Wyoming costs approximately the following:

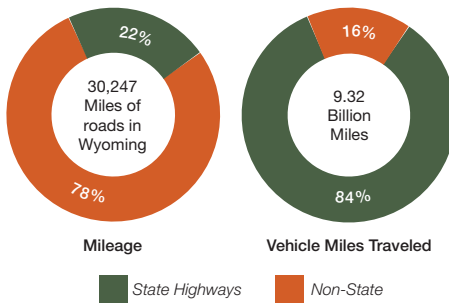
2-lane bituminous major rehabilitation/reconstruction:  
\$850,000 to \$2,500,000

4-lane bituminous major rehabilitation/reconstruction:  
\$1,500,000 to \$3,500,000

4-lane concrete major rehabilitation/reconstruction:  
\$3,500,000 to \$4,750,000

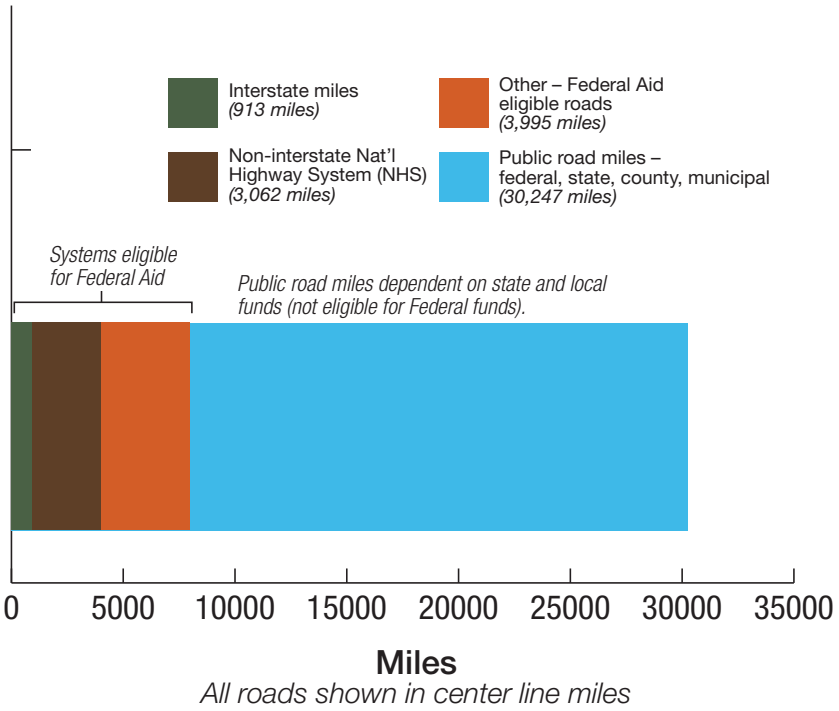
(Reconstruction in mountainous terrain can be substantially more expensive than the flat land reconstruction figures given.)

## System Size vs. Use



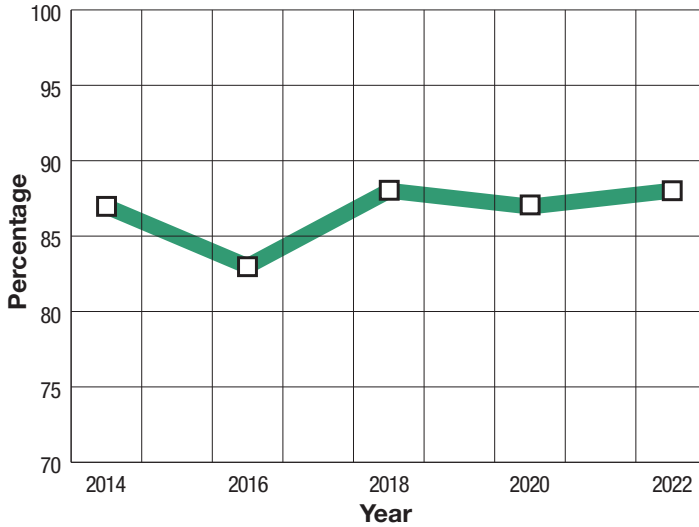
Although the State Highway System (including the 913 miles of interstate) amounts to less than 25 percent of the total number of roads in the state, it carries more than 80 percent of the state's vehicle traffic.

# Federal Aid Highway System vs. Public Road Miles



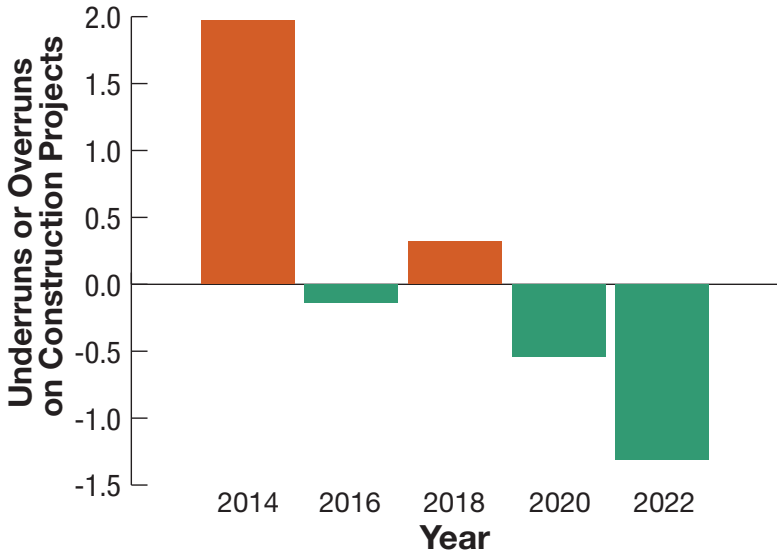
- Only about 25 percent of Wyoming's public road miles are eligible for most federal funding.
- About half of Wyoming's federal highway formula funds can be used on the interstate or NHS system only.

# Percentage of Construction Jobs Completed on Time



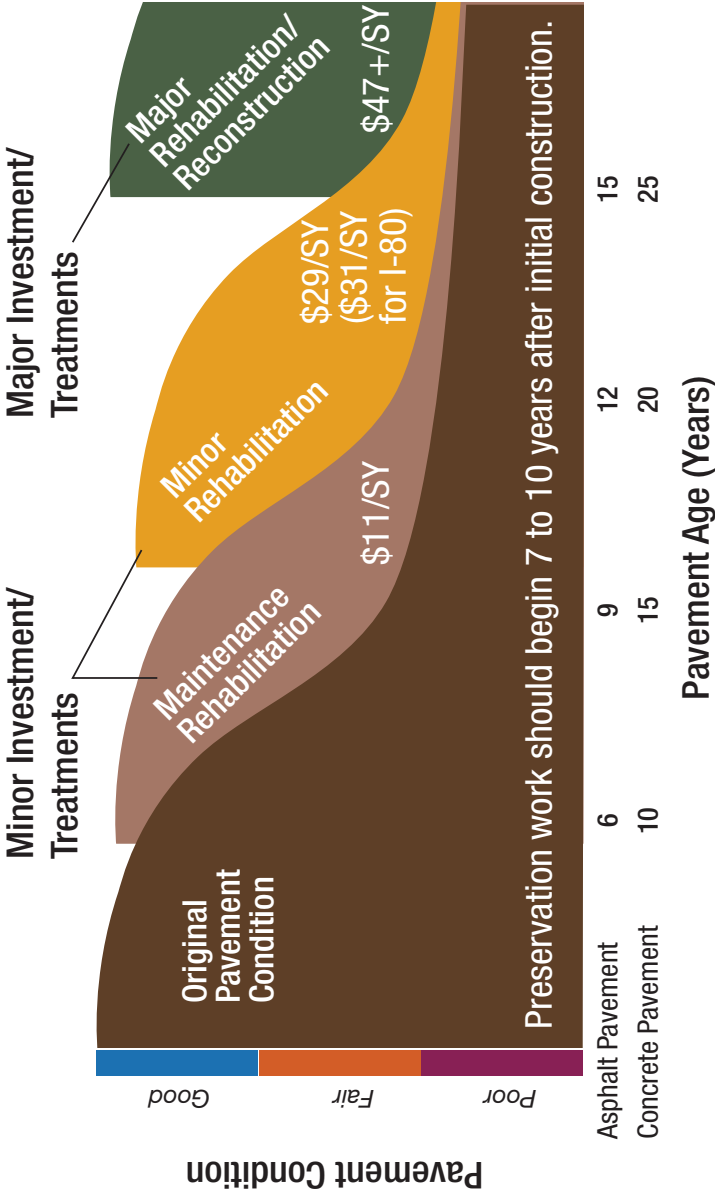
Source: Construction Program

## Annual Cost Underrun or Overrun Expressed as Percentage



Source: Construction Staff

# Road Deterioration vs. Time

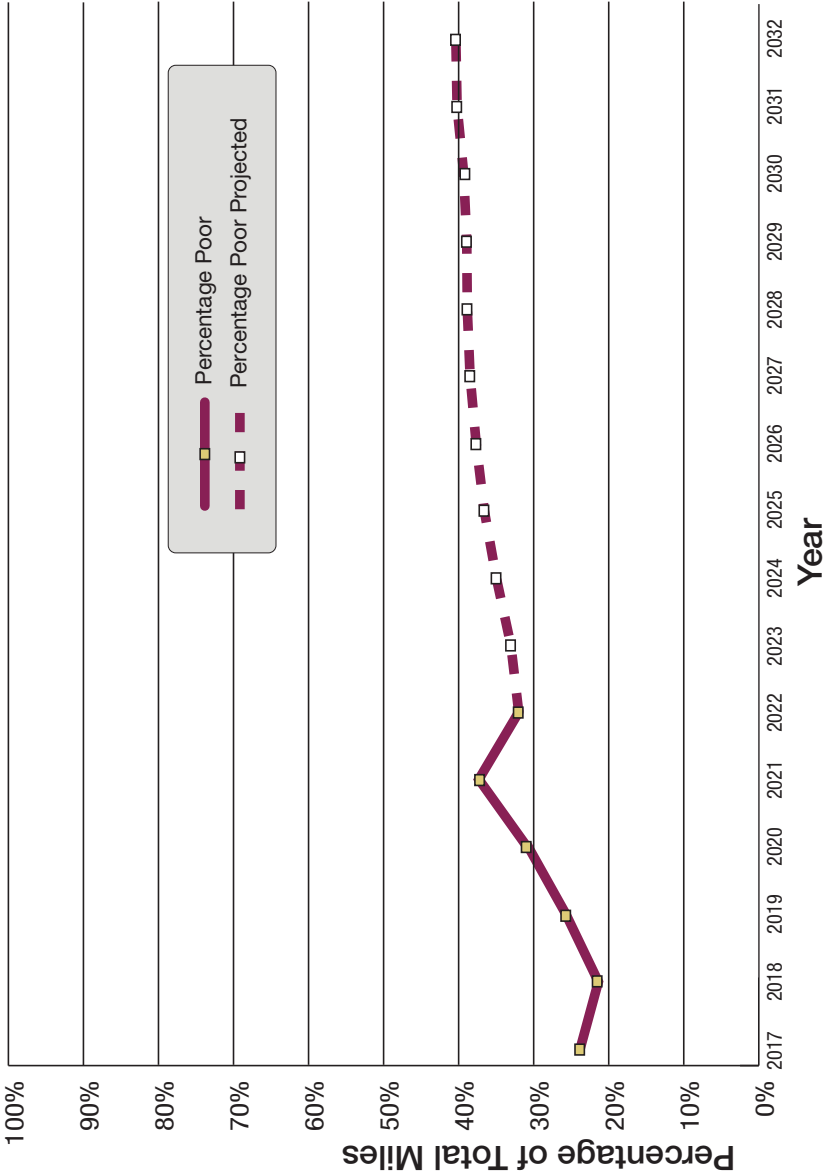


Source: Pavement Management System

Timely maintenance along with the correct treatment, applied at the correct time, is the key to getting the maximum life from our pavements.

# State Highway System Performance Trends

## Pavement Condition



Source: Materials Program



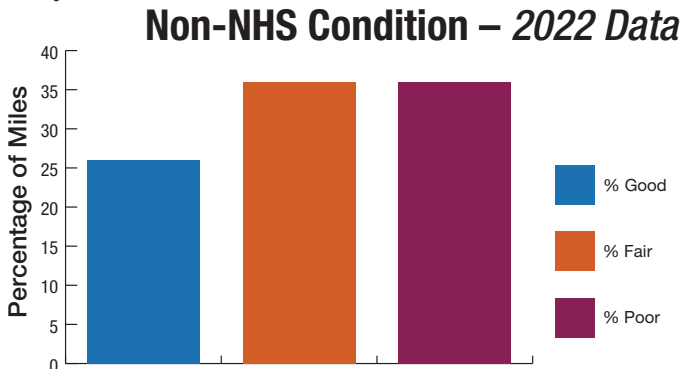
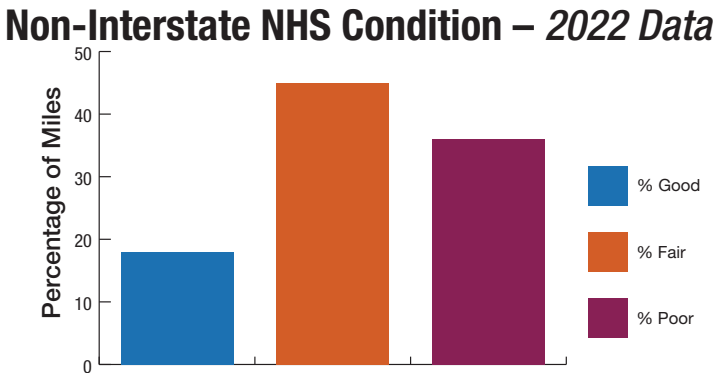
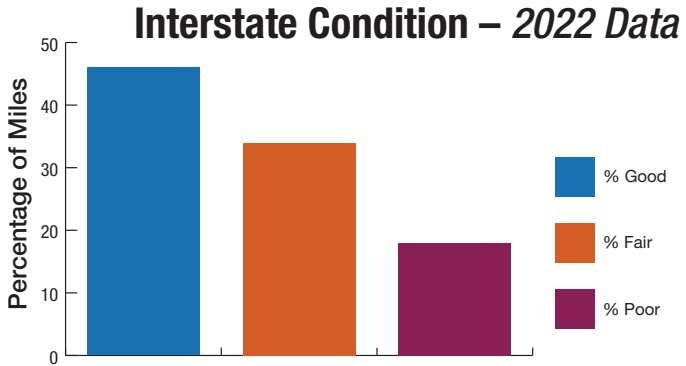
# Pavement Condition and Improvement

To align with federal reporting, WYDOT has shifted to a new Pavement Quality Rating (PQR) system that defines pavement sections as good, fair, or poor. This index replaces the Present Serviceability Index used previously.

**Good** pavement rates a PQR over 3.5 to a maximum of 5.0.

**Fair** pavement rates a PQR from 2.5 to 3.5.

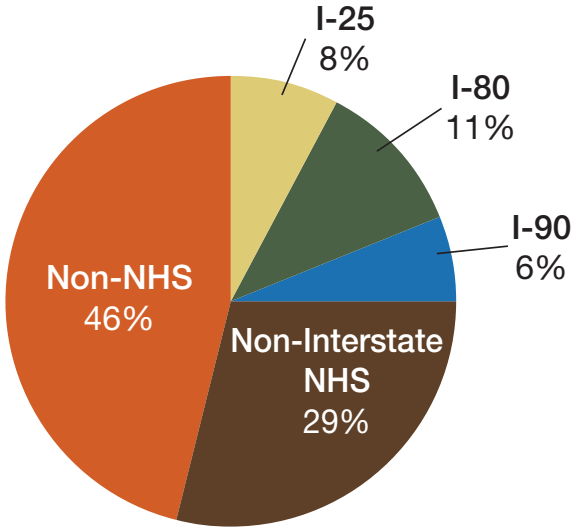
**Poor** pavement rates a PQR of less than 2.5.



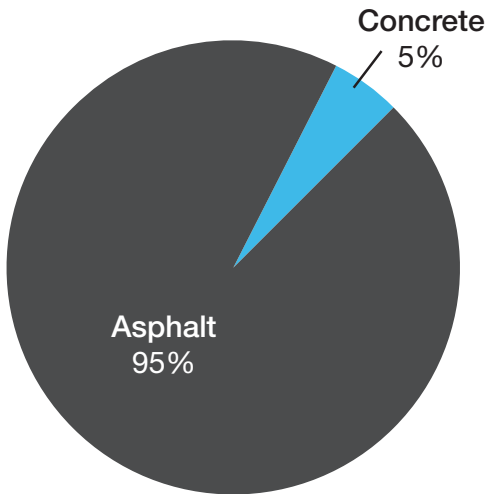
Source: Pavement Management System

# State Highway Percentages and Pavement Types

## System Classifications



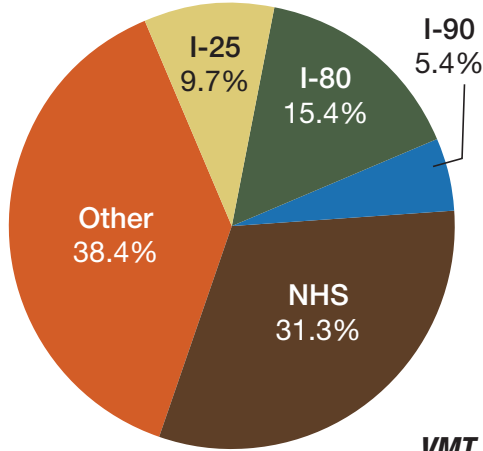
## Concrete vs. Asphalt



Source: Pavement Management System

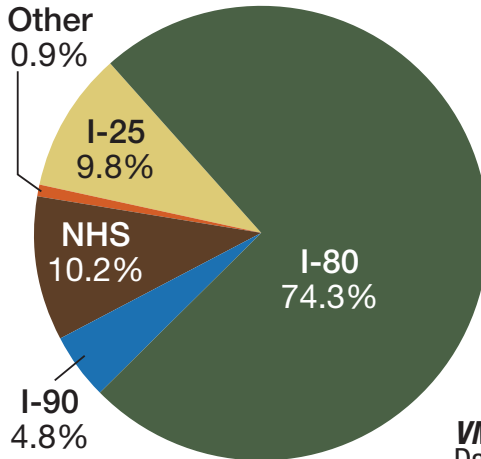
# Traffic Levels

## Passenger Car Traffic by System



**VMT**  
Daily = 21.1 million  
Annual = 7.7 billion

## Heavy Truck Traffic by System

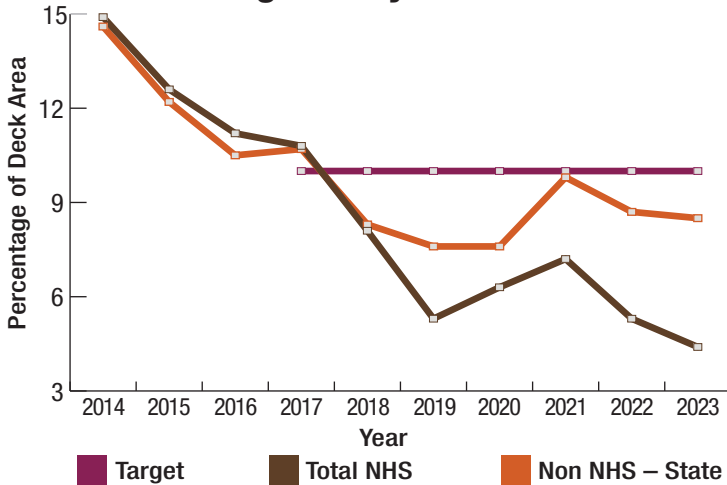


**VMT**  
Daily = 4.5 million  
Annual = 1.6 billion

Source: Planning Program

# Bridge Conditions

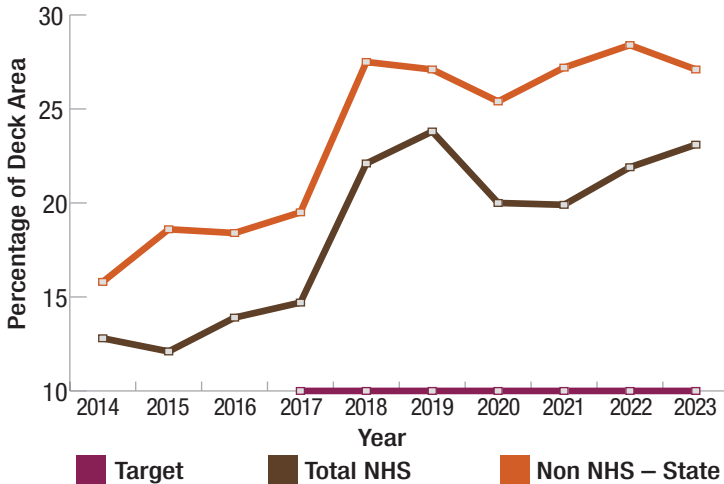
## National Highway Performance Program (NHPP) Performance Rating History – Poor Structures



Note: NHPP target went into effect May 20, 2017, and applies only to NHS bridges.

Source: Bridge Program – Federal Tape Submittal for 2021, Excluding Federally Owned Bridges

## NHPP Performance Rating History – Good Structures

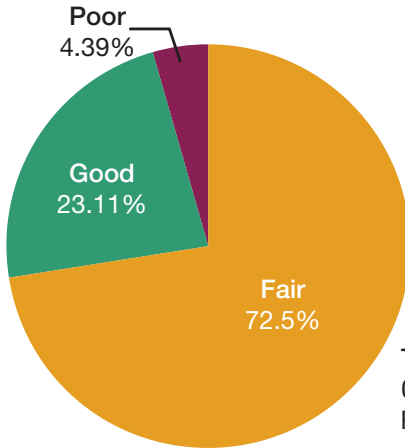


Note: NHPP target went into effect May 20, 2017, and applies only to NHS bridges.

Source: Bridge Program – Federal Tape Submittal for 2021, Excluding Federally Owned Bridges

# Bridge Conditions

## 2023 NHPP Performance Ratings for all NHS Bridges – Total Area (s.f.): 7,968,278

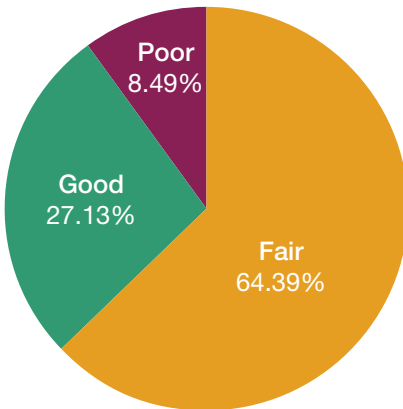


**Target:**  
Good  $\geq$  10%  
Poor  $<$  10%

*Note: NHPP target went into effect May 20, 2017, and applies only to NHS bridges.*

Source: Bridge Program – Federal Tape Submittal for 2023, Excluding Federally Owned Bridges

## 2023 Performance Ratings for all Non-NHS Bridges on the State Highway System – Total Area (s.f.): 3,393,731



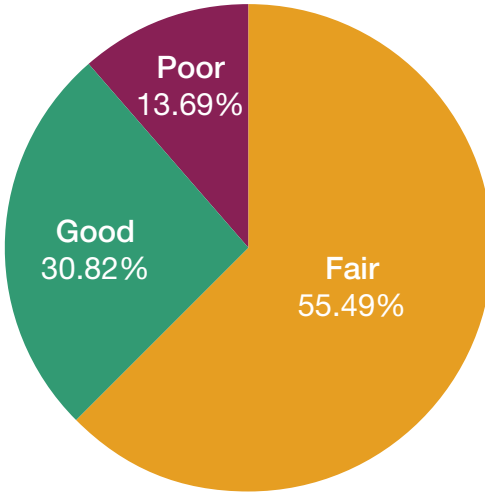
**WYDOT target for non-NHS bridges:**  
Good  $\geq$  10%  
Poor  $<$  10%

*Note: NHPP target went into effect May 20, 2017, and applies only to NHS bridges.*

Source: Bridge Program – Federal Tape Submittal for 2023, Excluding Federally Owned Bridges

# Bridge Conditions

## 2023 Performance Ratings for City and County Bridges – Total Area (s.f.): 2,147,633



*Note: NHPP target went into effect May 20, 2017, and applies only to NHS bridges.*

*Source: Bridge Program – Federal Tape Submittal for 2023, Excluding Federally Owned Bridges*



# Wyoming Rail System

Railroad	Carrier Class	Route Miles Owned
BNSF Railway Company*	I	960*
Union Pacific Railroad*	I	873*
Rapid City, Pierre & Eastern Railroad	II	7
Bighorn Divide & Wyoming Railroad	III	8
Swan Ranch Railroad	III	8
<b>Total</b>		<b>1,750*</b>

*\*Includes 106 miles of jointly owned and operated track in the Southern Powder River Basin coal production area; 106 miles are accounted for in the BNSF and UP figures above but are counted once for the total.*

Source: Planning Program

## WYDOT Transit Program

Wyoming transit programs are overseen by WYDOT's Local Government Coordination Section and can be reached at (307) 777-4438.

### Rural Area Program

- Statewide rural public transit program – funded through Federal Transit Administration (FTA) apportionments and state highway funds.

- ❖ Assists with capital, administrative, and operating expenses statewide.

- Rural Technical Assistance Program (RTAP)

- ❖ Nearly all the RTAP money is subcontracted to the statewide association to offer safety and driver training.

- Intercity Bus Program – provides operating assistance to operators to provide service making connections between municipalities both in and outside Wyoming.

# WYDOT Transit Program

## Enhanced Mobility of Seniors and Individuals with Disabilities

This program provides formula funding to increase the mobility of seniors and persons with disabilities. It funds private, non-profit, and government agencies to acquire transit vehicles and related equipment. Often federal, state, and local funds combine to finance these acquisitions.

## Rural Area Formula Grants

Allows for capital, planning, and operating assistance to support public transportation in rural areas, defined as areas with fewer than 50,000 population.

## State Planning and Research Programs

Provides funds to address local, regional, and statewide transit planning including transit development plans, coordinated human service transportation plans, and design and engineering for transit capital projects.

## Urbanized Area Formula Program (Pop. Over 50,000)

Assists with capital, administrative, and operating expenses for Casper and Cheyenne urbanized transit programs.

## Bus and Bus Facilities Program

Transit providers may apply to WYDOT for eligible bus and bus facilities projects.

## State Transportation Enterprise Fund

Grants or loans administered through the State Lands & Investments Board (SLIB) to provide capital investments for enhancing public transportation throughout Wyoming.

## Public Transit Information

### Albany County

Eppson Center for Seniors

(307) 745-5116

UW Transit & Parking Services

(307) 766-9800

### Big Horn County

North Big Horn Senior Center

(307) 548-6556

South Big Horn Senior Citizens

(307) 765-4488

### Campbell County

Campbell County Senior

Citizens Association

(307) 686-0804

### Carbon County

Carbon County Senior Services – Saratoga

(307) 326-5564

Carbon County Senior Services – Baggs

(307) 383-7595

### Converse County

Douglas Senior Citizens

Transportation in Douglas and Glenrock

(307) 358-4348

### Crook County

Crook County Senior Services

(307) 283-1711

### Fremont County

Child Development Services of

Fremont County – Lander

(307) 332-5508

High Country Senior Citizens (Dubois)

(307) 455-2990

Lander Senior Citizens Center

(307) 332-2746

Riverton Senior Citizens Center

(307) 856-6332

Shoshoni Senior Citizens

(307) 876-2703

Wind River Transportation Authority

(307) 856-7118

### Goshen County

Diversified Services

(307) 532-5911

Senior Friendship Center – Torrington

(307) 532-2796



# Public Transit Information

## Hot Springs County

Hot Springs County Senior Citizens Center  
(307) 864-2151

## Johnson County

Buffalo Senior Center  
(307) 684-9551

## Laramie County

City of Cheyenne Transit Program  
(307) 637-6253

Pine Bluffs Senior Center  
(307) 245-3816

## Lincoln County

Kemmerer Senior Citizens  
(307) 877-3806

Star Valley Senior Citizens  
(307) 885-3780

Thayne Senior Citizens  
(307) 883-2678

## Natrona County

Casper Area Link (CAL)  
(307) 235-8273

## Niobrara County

Niobrara Senior Center  
(307) 334-2561

## Park County

Cody Council on Aging  
(307) 587-6221

Meeteetse Recreation District  
(307) 899-2698

Powell Senior Citizens Center Ago-Go  
(307) 754-4223

## Platte County

Services for Seniors  
(307) 322-3424

## Sheridan County

Rehabilitation Enterprises of North Eastern  
Wyoming (RENEW)  
(307) 672-7481

Senior Citizens Council  
(307) 672-2240

## Sublette County

Rendezvous Pointe  
(307) 367-2881

Southwest Sublette County Pioneers  
(307) 276-3249

## Sweetwater County

Sweetwater Transit Authority Resources (STAR)  
(307) 382-7827

## Teton County

Children's Learning Center  
(307) 733-1616

Senior Center of Jackson Hole  
(307) 733-7300

Southern Teton Area Rapid Transit (START Bus)  
(307) 733-4521

## Uinta County

Uinta Senior Citizens, Inc.  
(307) 789-3553

## Washakie County

Ten Sleep Senior Center  
(307) 366-2210

Washakie County Senior Citizens Center  
(307) 347-3208

## Weston County

Weston County Senior Services  
(307) 746-4903

## Transportation Voucher Program

Wyoming Independent  
Living Rehabilitation

Casper  
(307) 266-6956

Cheyenne  
(307) 637-5127

Gillette  
(307) 257-7555

Laramie  
(307) 721-4071

Wyoming Services for  
Independent Living

Lander  
(307) 332-4889

Cody  
(307) 587-7881

Rock Springs  
(307) 362-4159

## Intercity Bus Providers

ALLTRANS, Inc.  
(800) 443-6133

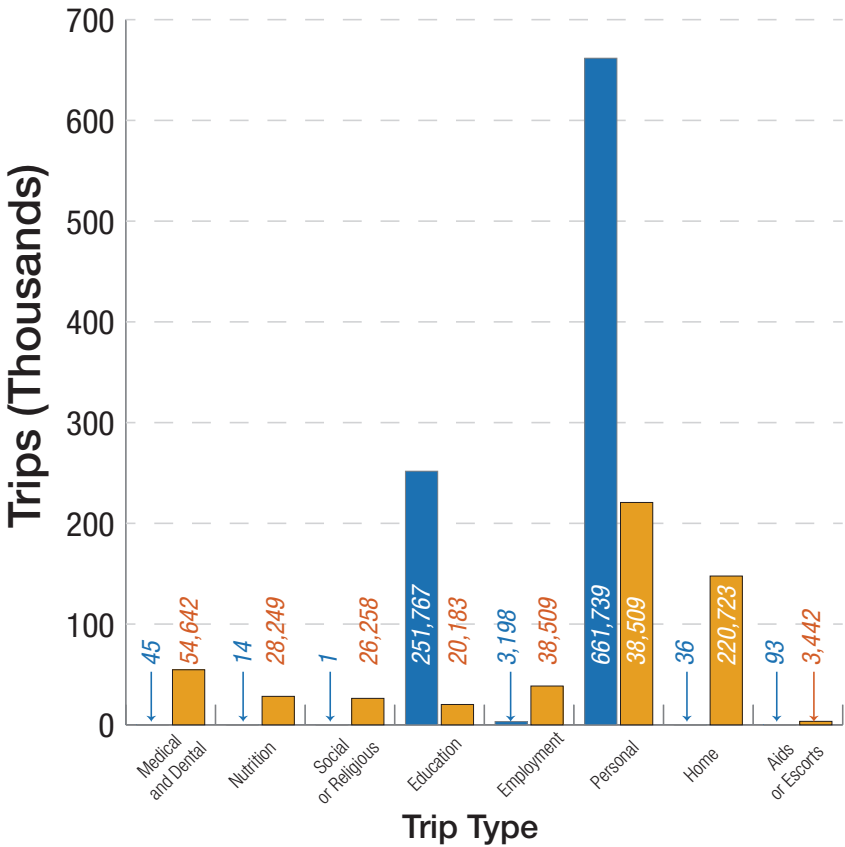
Black Hills Stage Lines  
(877) 779-2999

Greyhound  
(800) 231-2222

Jefferson Lines  
(800) 451-5333

Salt Lake Express  
(208) 317-8211

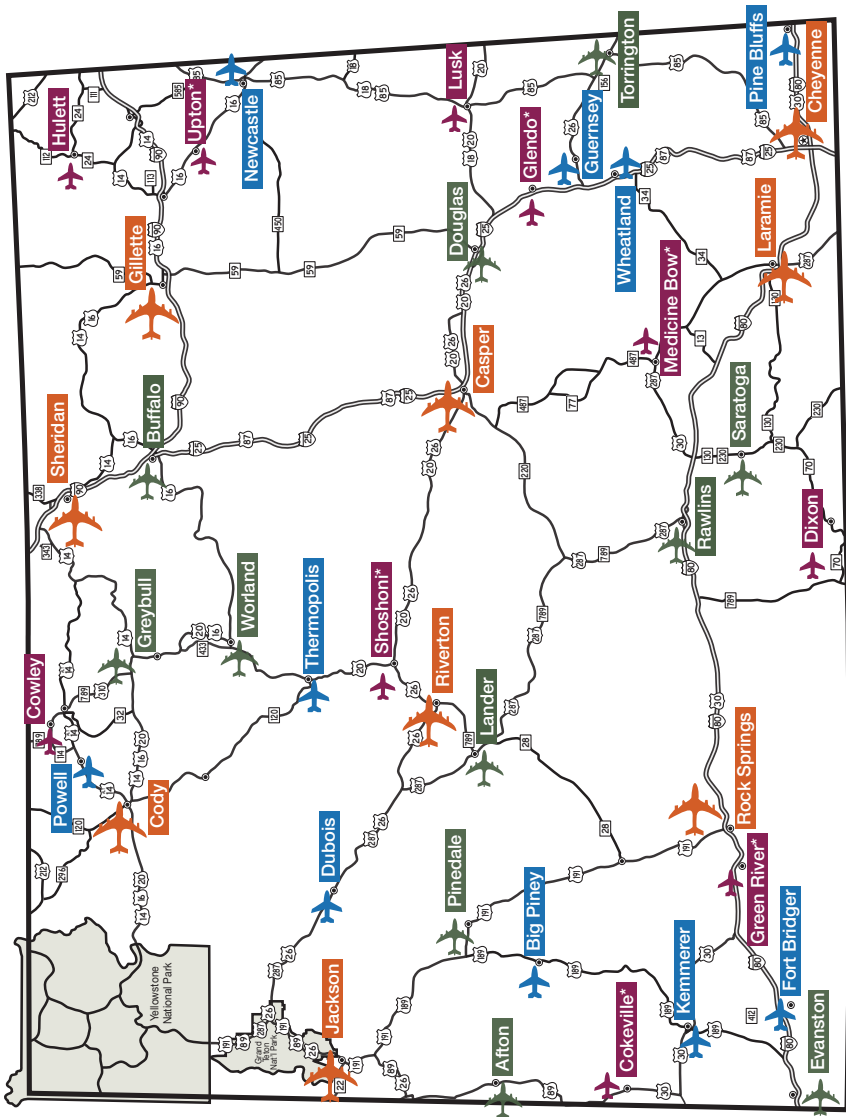
# Public Transit Ridership



**Total Trips – 1,347,408**

- Fixed Route Trips – 916,893
- On-demand Trips – 430,515

# Wyoming Airport System



Source: Aeronautics Division

# Wyoming Airport System



## Commercial Service Airports

City	ID	Airport
1. Casper .....	CPR ...	Casper-Natrona County International Airport
2. Cheyenne .....	CYS ...	Cheyenne Regional – Jerry Olson Field
3. Cody .....	COD ...	Yellowstone Regional Airport
4. Gillette .....	GCC ...	Northeast Wyoming Regional Airport
5. Jackson .....	JAC ...	Jackson Hole Airport
6. Laramie .....	LAR ...	Laramie Regional Airport
7. Riverton .....	RIW ...	Central Wyoming Regional Airport
8. Rock Springs ...	RKS ...	Southwest Wyoming Regional Airport
9. Sheridan .....	SHR ...	Sheridan County Airport



## Business Airports

City	ID	Airport
1. Afton .....	AFO ....	Afton-Lincoln County Municipal Airport
2. Buffalo .....	BYG ....	Johnson County Airport
3. Douglas .....	DGW ..	Converse County Airport
4. Evanston .....	EVW ...	Evanston-Uinta County Burns Field
5. Greybull .....	GEY ...	South Big Horn County Airport
6. Lander.....	LND ...	Hunt Field
7. Pinedale.....	PNA ....	Ralph Wenz Field
8. Rawlins .....	RWL ...	Rawlins Municipal/Harvey Field
9. Saratoga .....	SAA ....	Shively Field
10. Torrington .....	TOR ....	Torrington Municipal Airport
11. Worland .....	WRL ...	Worland Municipal Airport



## Intermediate Airports

City	ID	Airport
1. Big Piney .....	BPI ...	Miley Memorial Field
2. Dubois .....	DUB ...	Dubois Municipal Airport
3. Fort Bridger .....	FBR ...	Fort Bridger Airport
4. Guernsey .....	GUR ...	Camp Guernsey Army Airfield
5. Kemmerer.....	EMM	Kemmerer Municipal Airport
6. Newcastle.....	ECS ...	Mondell Field
7. Pine Bluffs.....	82V ...	Pine Bluffs Municipal Airport
8. Powell .....	POY ...	Powell Municipal Airport
9. Thermopolis.....	HSG ...	Hot Springs County Airport
10. Wheatland.....	EAN ...	Phifer Field



## Local Airports

City	ID	Airport
1. Cokeville* .....	U06 ...	Cokeville Municipal Airport
2. Cowley .....	U68 ...	North Big Horn County Airport
3. Dixon .....	DWX	Dixon Airport
4. Glendo* .....	76V ...	Thomas Memorial Airport*
5. Green River*.....	48U ...	Greater Green River Intergalactic Spaceport*
6. Hulett .....	W43 ...	Hulett Municipal Airport
7. Lusk .....	LSK ...	Lusk Municipal Airport
8. Medicine Bow*	80V ...	Medicine Bow Airport*
9. Shoshoni* .....	49U ...	Shoshoni Municipal Airport*
10. Upton*.....	83V ...	Upton Municipal Airport*

\* Non-paved.

# Total Wyoming Airport Passengers (Enplanements and Deplanements)

Airports	2017	2018	2019	2020	2021	2022	2023
Yellowstone Regional Airport (COD)	77,873	77,400	81,966	40,590	74,101	74,835	67,707
Natrona County International Airport (CPR)	191,959	175,389	195,128	89,879	120,297	119,817	168,622
Cheyenne Regional Airport (CYS)	1,725	3,545	31,942	6,259	8,032	37,541	25,031
Northeast Wyoming Regional Airport (GCC)	60,414	55,819	60,838	32,266	47,311	47,203	53,485
Jackson Hole Airport (JAC)	675,575	746,962	905,694	563,337	1,008,447	809,394	1,002,980
Laramie Regional Airport (LAR)	29,068	32,521	34,716	17,238	30,203	31,025	32,144
Central Wyoming Regional Airport (RIW)	15,504	14,559	14,941	14,918	30,945	26,286	30,560
Southwest Wyoming Regional Airport (RKS)	34,448	44,910	47,364	19,587	32,849	29,991	31,921
Sheridan County Airport (SHR)	19,393	19,195	16,853	19,546	46,780	48,521	51,360
<b>Wyoming State Totals</b>	<b>1,105,959</b>	<b>1,170,300</b>	<b>1,389,442</b>	<b>803,620</b>	<b>1,398,965</b>	<b>1,224,613</b>	<b>1,463,810</b>

Note: Flights include commercial passengers only.

Source: Aeronautics Division

# Statewide Aviation Economic Impact

Wyoming statewide economic impact study for aviation determined that when all activities are considered, the 34 study airports support the following:

Jobs related to airport management, airport tenants, capital investment at airports and visitor spending

**21,974**

Annual payroll associated with these jobs

**\$941.7 million**

Annual economic activity associated with airport and visitor related spending

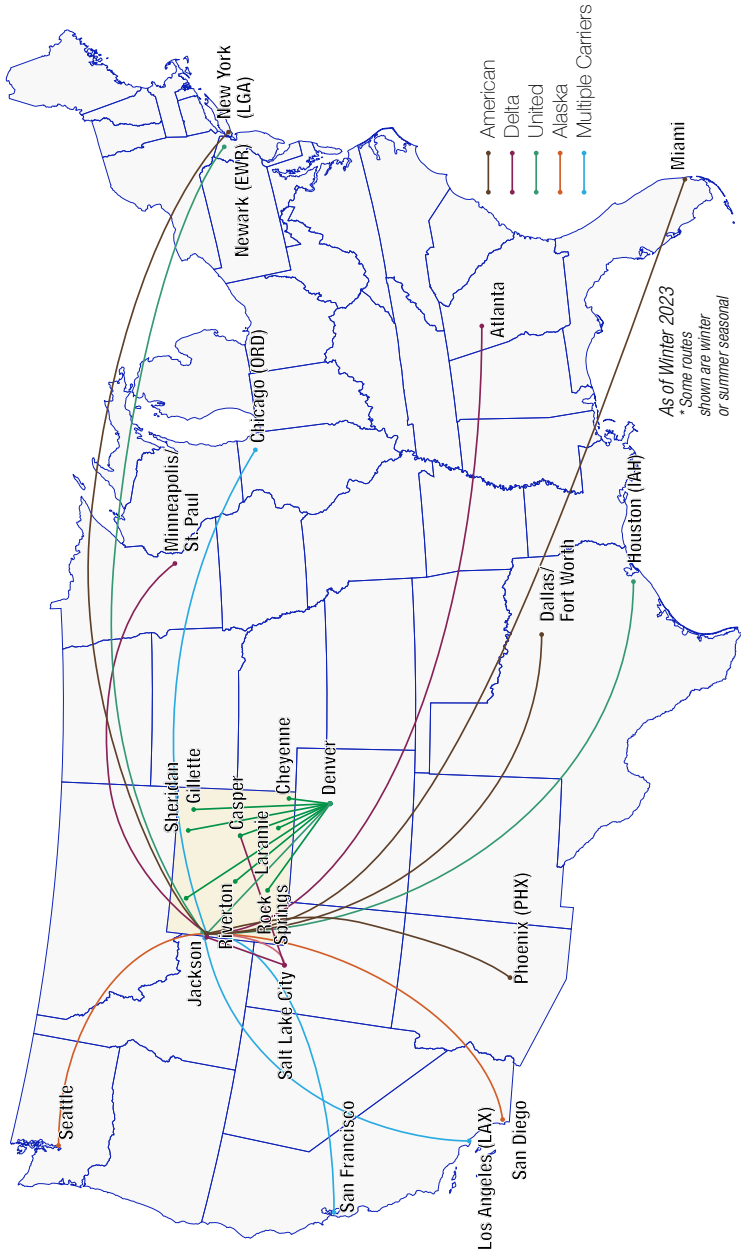
**\$2.0 billion**

Annual local and state tax revenues

**\$87.7 million**

Source: 2020 Aviation Economic Impact Study Executive Summary. Prepared by Jviation, Inc.

# Wyoming Flight Route Map



# Rest Area and Scenic Byways Map

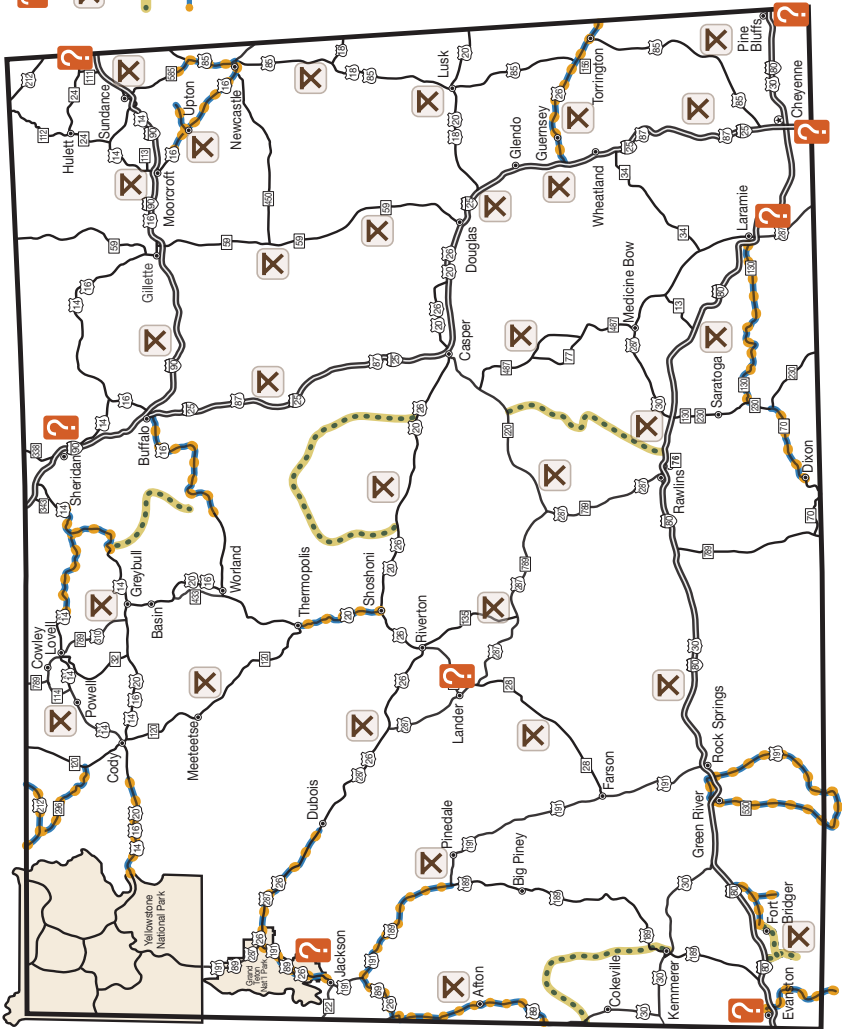
**Information Center**  
(includes restroom facilities)

**Rest Areas**  
Rest areas may close temporarily for maintenance or other reasons.

**Scenic Backway**

**Scenic Byway**

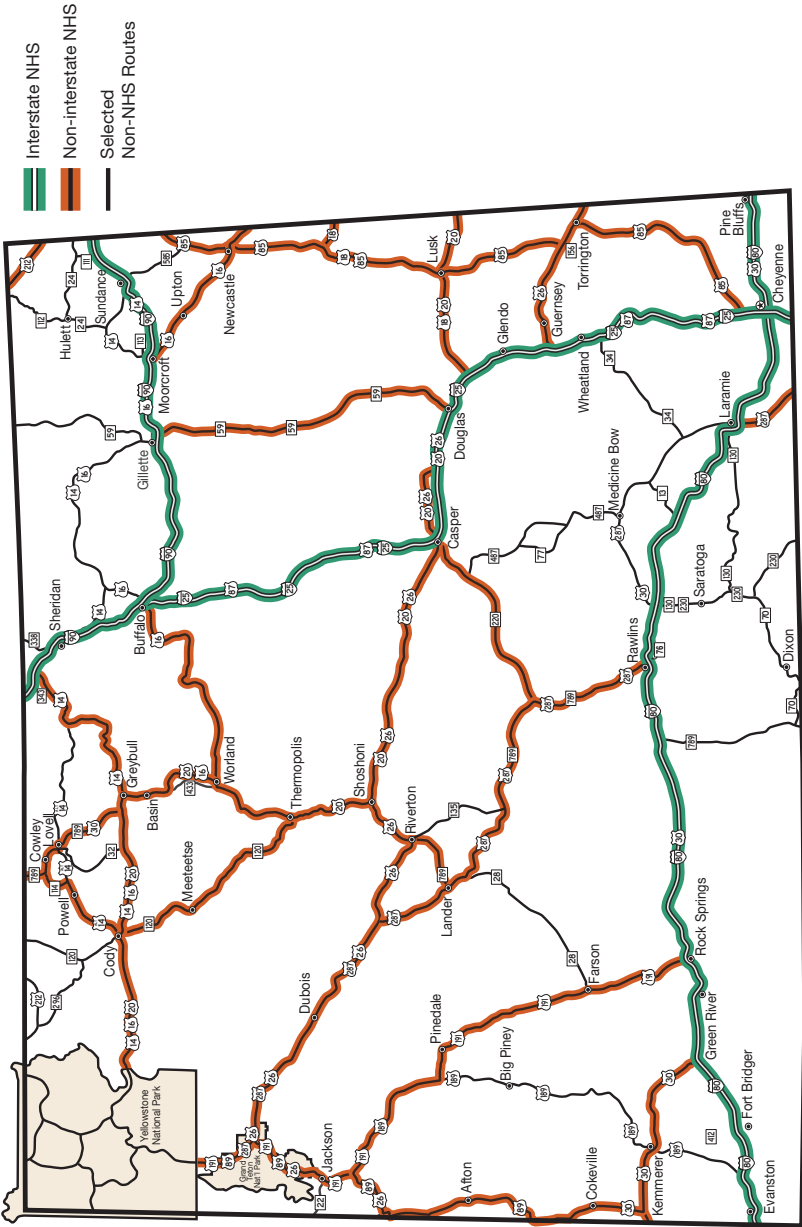
The National Scenic Byways Program is a grass-roots effort established to help recognize, preserve, and enhance selected roads throughout the United States. The U.S. Secretary of Transportation recognizes certain roads as All-American Roads or National Scenic Byways based on one or more archaeological, cultural, historic, or scenic qualities.



Source: Public Affairs Office



# National Highway System



# WYDOT History in Brief

- 1913 *Wyoming begins licensing automobiles and requiring license plates.*
- 1916 *Congress passes the first US Federal Highway Act.*
- 1917 *The Wyoming Legislature establishes the Wyoming Highway Department.*
- 1918 *The department produces its first map.*
- 1919 *Lt. Colonel Dwight D. Eisenhower participates in a cross county military truck convoy; calls Wyoming roads west of Cheyenne “poor dirt ones, with weak culverts and bridges.”*
- 1919 *The department begins highway maintenance work.*
- 1923 *The department purchases its first snowplow.*
- 1926 *U.S. highway route numbering standardized.*
- 1930 *County designations (based on each county’s assessed valuation) appear on Wyoming license plates for the first time.*
- 1933 *The Wyoming Highway Patrol is organized.*
- 1936 *The bucking horse and rider begin to appear on state license plates.*
- 1937 *The legislature creates the Wyoming Aeronautics Commission.*
- 1947 *Wyoming enacts a law requiring driver’s licenses.*
- 1952 *The department produces its first color highway map.*
- 1953 *The current five transportation operations districts are formed with central offices in Laramie (1), Casper (2), Rock Springs (3), Sheridan (4), and Basin (5).*
- 1956 *Interstate construction begins in Wyoming after President Dwight D. Eisenhower signs the Federal Aid Highway Act of 1956.*
- 1985 *Wyoming completes construction of its current 913 miles of interstate highways.*
- 1991 *The Wyoming Department of Transportation is inaugurated by merging the former highway agency, including the Wyoming Highway Patrol, with aeronautics, state vehicle registration and license plate production, and other transportation functions.*
- 2017 *The Wyoming Department of Transportation (WYDOT) begins its second century.*
- 2021 *The Infrastructure Investment and Jobs Act (IIJA) is passed and enacted.*
- 2023 *WYDOT is awarded \$64 million in federal discretionary grant funds.*

*Historical information courtesy of Keith Rounds, Bruce Burrows, John R. Waggener, Ron Kisicki, Matthew White, and John Davis.*



# WYOMING DEPARTMENT OF TRANSPORTATION



---

5300 Bishop Boulevard | Cheyenne, WY 82009-3340