



WYOMING'S TRANSPORTATION SYSTEM

Supporting the economy and connecting our communities.

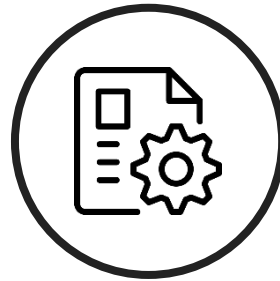
STATE TRANSPORTATION IMPROVEMENT PROGRAM 2025-2030



Purpose



**Need public
input**



**Need to know what
local agencies are
working on**



Overview of WYDOT



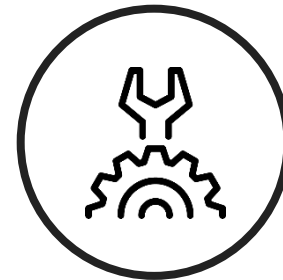
Road Map



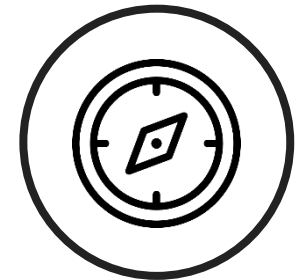
**WYDOT
Overview**



**STIP
Development
and Overview**



**District
Projects**



Next Steps



Purpose, Mission, Vision & Values

Purpose: Support Wyoming's economy and quality of life while safely connecting communities

Mission: Provide a safe and effective transportation system

Vision: Excellence in Transportation

Values: Respect, Integrity, Dedication, Excellence, Safety (RIDES)





WYDOT Areas of Focus and Strategic Objectives

WYDOT Areas of Focus

Recognize/Retain/Recruit

Secure Additional Funding

Develop the Brand

WYDOT Strategic Objectives

- Serve Our Customer
- Ensure Transparency and Public Engagement
- Value Our Team
- Develop and Maintain Strategic Partnerships
- Appropriately Manage Resources
- Continue to Improve and Innovate





Guiding Principles

1. Align expenditures with available revenue amount and source
2. Focus on addressing identified critical life safety issues.
3. Prioritize WYDOT asset preservation based on condition of the asset to meet established goals (as appropriate)
4. Improve operational effectiveness and efficiency
5. Prioritize activities to minimize negative impacts to the public
6. Address mobility and capacity through system improvements and enhancements

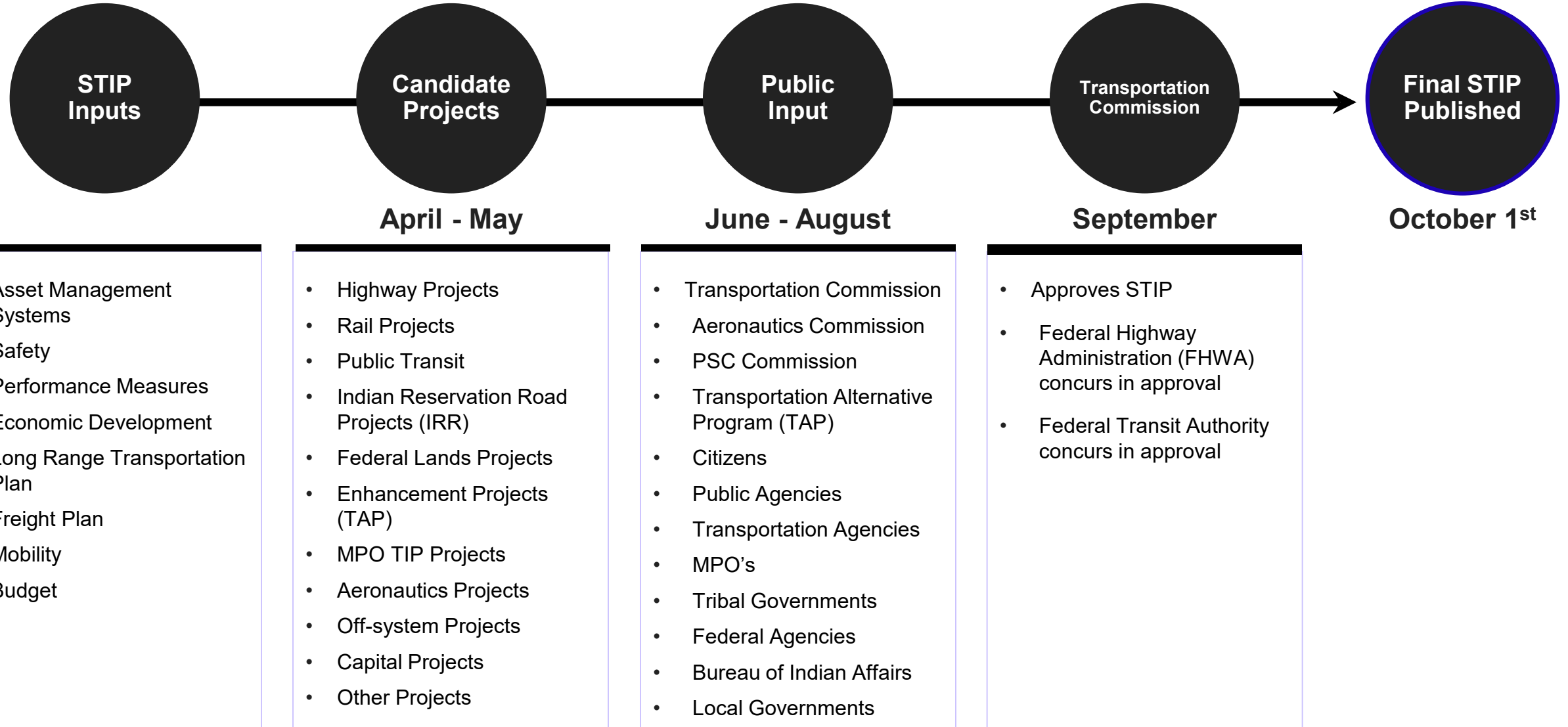


WYDOT Overview

- Engineering & Planning
- Construction
- Maintenance
- Equipment
- Facilities
- Traffic / ITS
- Emergency Communications
- Wyoming Highway Patrol
- Aeronautics
- 24-hour Transportation Management Center
- Road Condition Website
- Driver's Services
- Compliance & Investigation
- Motor Vehicles
- Support programs



STIP Process Overview





STIP - What is in the document?

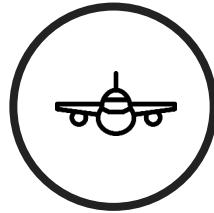
Single source of the Department's projects.



**Highway
Projects – 6
Year Plan**



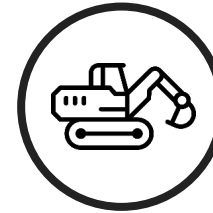
**Transit Projects
– 1 year plan**



**Aeronautic
Projects – 5 year
plan**



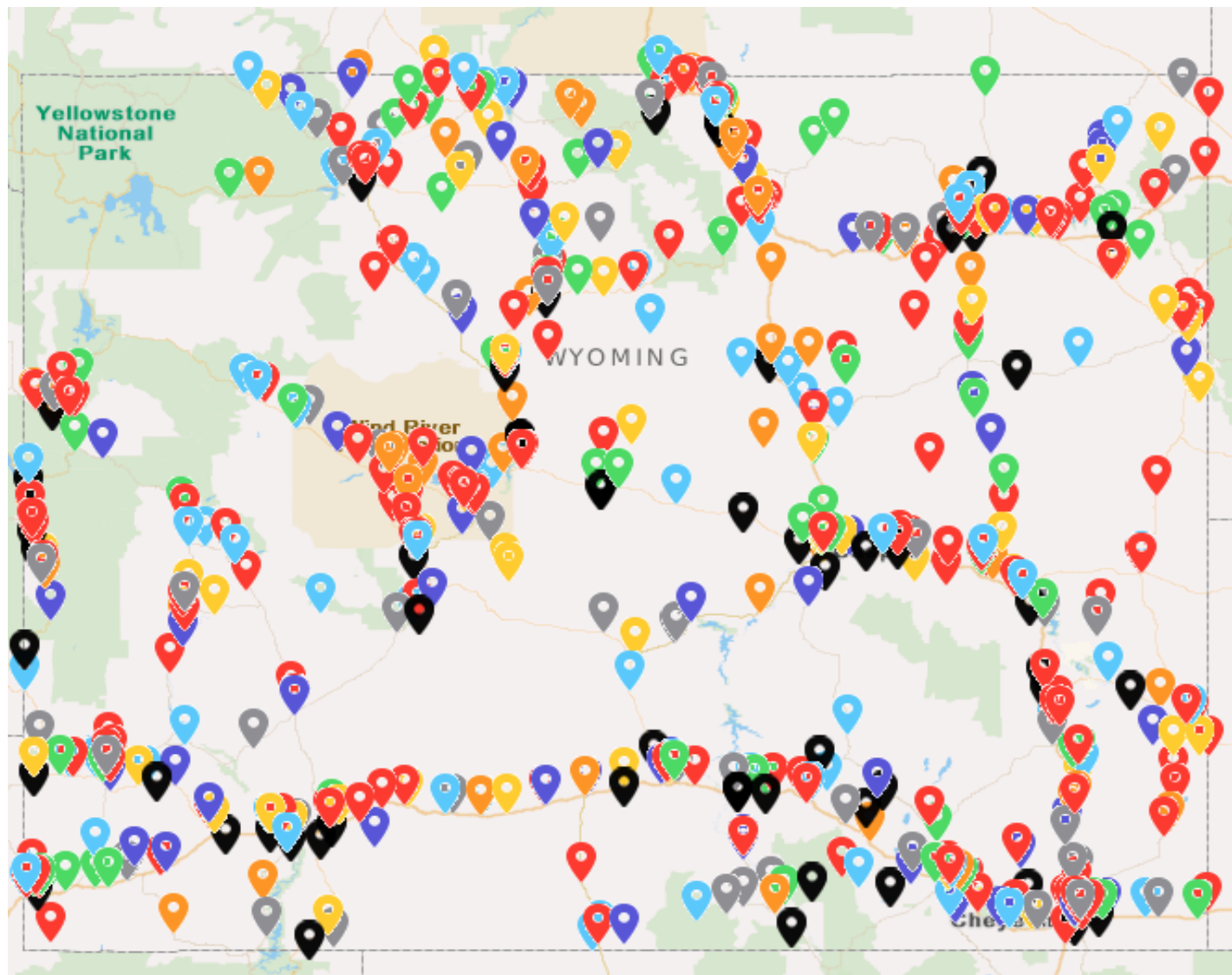
**Public Safety
Communication
s Commission
(PSCC) Projects
– 1 year plan**



**Capital
Improvement
Projects – 1 year
plan**



STIP Project Map



Legend

- 2024
- 2025
- 2026
- 2027
- 2028
- 2029
- 2030
- 2031



STIP - What is in the document?



Wyoming Department of Transportation
5300 Bishop Blvd
Cheyenne, WY 82009

STATE TRANSPORTATION IMPROVEMENT PROJECTS ENGINEERING & CONSTRUCTION

Platte County

Transportation Projects

Fiscal Year: 2026

Trans Comm Dist	Project		General Location Detail Location	Begin RM	End RM	Length	Character of Work	Cost \$1,000						
								PE FY	PE	CE & CON	TOTAL	FED	ST	OTH
7	HIP	B262007	TRANSPORTATION DISTRICT 2 STRUCTURE NO. CUI	3.29	3.29	0.00	BRIDGE REPLACEMENT	2021	118	2,753	2,870	2,597	273	0
7	NHPPI	I252172	WHEATLAND TO DOUGLAS GLENDOM MARGINAL/I-25 NORTHBOUND LANE/STRUCTURE NO. CHD, CZH, CZM	114.69	120.80	6.11	PAVEMENT REHABILITATION	2022	318	13,543	13,861	12,858	1,004	0
FY TOTAL:				6.11					\$436	\$16,296	\$16,731	\$15,455	\$1,277	\$0

Aeronautics Projects

Fiscal Year: 2026

Aero Comm Dist	Project		General Location		Character of Work	Cost \$1,000						
						PE FY	PE	CE & CON	TOTAL	FED	ST	OTH
1	AERO	AEA008C	WHEATLAND		ACQUIRE LAND/EASEMENT		0	333	333	300	20	13
1	AERO	AEA012A	WHEATLAND		PAVEMENT MAINTENANCE		0	170	170	0	153	17
1	AERO	AEA022A	WHEATLAND		BUILDINGS		0	660	660	594	40	26
FY TOTAL:							\$0	\$1,163	\$1,163	\$894	\$213	\$56
Grand Total: 2026, Platte County							\$436	\$17,459	\$17,894	\$16,349	\$1,490	\$56



STIP - What is in the document?

Platte County

Transportation Projects

Fiscal Year: 2027

Trans Comm Dist	Project		General Location Detail Location	Begin RM	End RM	Length	Character of Work	Cost \$1,000						
								PE FY	PE	CE & CON	TOTAL	FED	ST	OTH
1	STP-BR	B272003	TRANSPORTATION DISTRICT 2 STRUCTURE NO. ADA	26.90	26.90	0.00	BRIDGE REPLACEMENT	2022	427	5,327	5,754	5,207	547	0
1	NHPPI	I252170	WHEATLAND TO DOUGLAS GLENDO MARGINAL I-25 SOUTHBOUND LANE	114.69	120.82	6.13	PAVEMENT REHABILITATION	2023	959	14,432	15,391	14,267	1,124	0
FY TOTAL:						6.13			\$1,386	\$19,759	\$21,145	\$19,474	\$1,671	\$0
Grand Total: 2027, Platte County									\$1,386	\$19,759	\$21,145	\$19,474	\$1,671	\$0



STIP - What is in the document?

County		Transportation Projects	Transit Projects	Aeronautics Projects	Total
Platte	2024	\$26,901,000	\$116,000	\$889,000	\$27,906,000
	2025	\$0	\$0	\$133,000	\$133,000
	2026	\$16,731,000	\$0	\$1,163,000	\$17,894,000
	2027	\$21,145,000	\$0	\$0	\$21,145,000
	2028	\$23,866,000	\$0	\$1,444,000	\$25,310,000
	2029	\$35,834,000	\$0	\$167,000	\$36,001,000
	Future Year	\$11,121,000	\$0	\$0	\$11,121,000
	Total	\$135,598,000	\$116,000	\$3,796,000	\$139,510,000



District 2 STIP 2025-2030

Platte County

Includes ongoing projects



Platte County Projects

2024

- I-25: Acceleration lane, southbound at milepost 98.1
- U.S. 26: chip seal between mileposts 0.5 – 14.7
- WYO 320: Overlay between mileposts 0.0 – 12.3
- Wheatland: 16th Street reconstruction
- U.S. 26: Bridge rehabilitation at milepost 16.22 (BNSF separation)



Platte County Projects

2025

- I-25: Bridge replacement (x6) at mileposts 40.52, 50.66, 59.01. 68.45
- WYO 312: Bridge replacement

2026

- I-25: Crack and seat/overlay between mileposts 114 – 120 (NBL)
- I-25: Bridge replacement (x2) at milepost 64.04
- WYO 314: Bridge replacement at milepost 3.29 (Chugwater Creek)
- WYO 320: Bridge replacement at milepost 1.22 (Wheatland Creek)



Platte County Projects

2027

- I-25: Glendo marginal – Crack and seat and overlay between mileposts 114.78– 120.82 (SBL)
- I-25 Chugwater South Service Road: Non-NHS bridge rehabilitation at milepost 26.90 (Railroad structure)

2028

- I-25: Bridge rehabilitation at mileposts 65 and 66
- WYO 270: Shoulder work, overlay and chip seal between mileposts 511.47 – 517.30
- WYO 312: Overlay, chip seal and intersection drainage work at milepost 7.08
- WYO 319: Overlay, chip seal between mileposts 212 – 226 (Glendo north)



Platte County Projects

2029

- I-25: Overlay, wearing course and shouldering all lanes between mileposts 47.78 – 51.62
- I-25: Overlay and bridge rehabilitation between mileposts 81.5 – 91.5
- Town of Wheatland: 10th Street bridge replacement over canal
- Town of Wheatland: Cole Street bridge replacement over Wheatland Creek
- Platte County: North Road bridge replacement over Wheatland Creek

2030

- I-25: Bridge rehabilitation NBL at milepost 104 (Middle Bear Int.)
- U.S. 26: Bridge rehabilitation at milepost 4.1 (BNSF RR)
- U.S. 26: Bridge rehabilitation at milepost 14.74 (North Platte River)



Highway Project Process



Planning Phase

- STIP Development
- Reconnaissance
- Survey Phase
- Public Input



Design Phase

- Issuance of design plans
- Engineering Studies
- Final plans and specifications
- Public Meetings as appropriate



Contract Phase

- Advertisement
- Public Bidding
- Award
- Construction
- Public Meetings as appropriate



Transit Projects

The Federal Transit Administration (FTA) and the Wyoming Legislature annually apportion funds to WYDOT for public transit.

WYDOT funds public transportation in all 23 counties

- Public Transit is primarily provided by senior centers within the state
- Local match is between 15% - 50 % depending on the funding type
- Applications are available from March 1 - April 15th annually

Funds are available:

- For Operating, Administration and Preventive Maintenance of public transit operations
- To replace, rehabilitate and purchase buses and related equipment and to construct bus-related facilities
- Multimodal transportation planning
- Inter-city bus transportation



Infrastructure Investment & Jobs Act (IIJA)

FY 2025 Surface Transportation funding

\$362,470,085

Construction dollars only - does not include bridges or EV

State vs **Federal** Funding

National Average – 70% State / 30% Federal

Wyoming – 27% State / 73% Federal

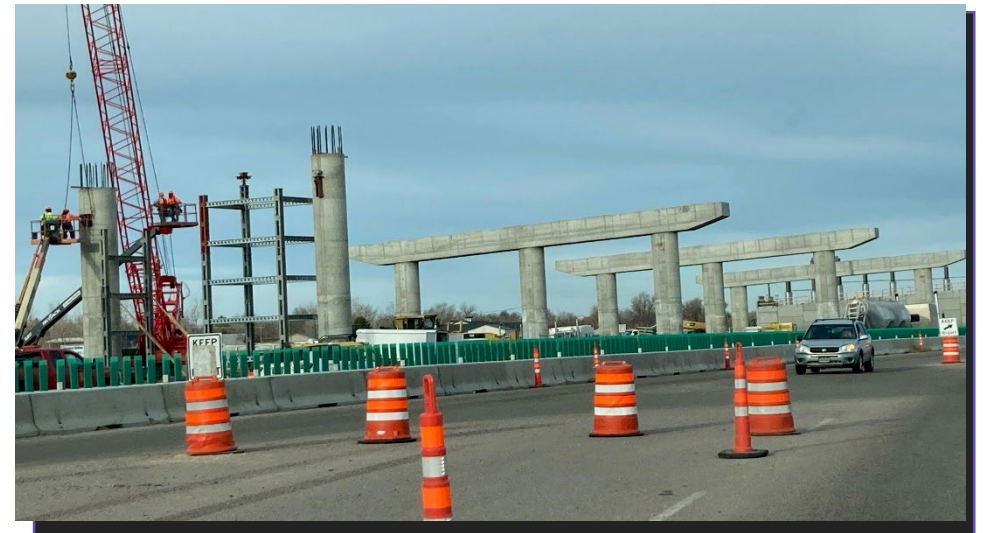


WYDOT Overview

- Highways: ~6,700 Miles of Roads and 2000 Bridges

District	1	2	3	4	5	Total
Interstate	247	241	187	237	0	912
US Hwys	209	388	550	394	690	2231
State Hwys	403	379	188	279	271	1520
Frontage/Other	272	589	466	341	400	2068
Total (Miles)	1131	1597	1391	1251	1361	6731

District	1	2	3	4	5	Total
On-system	367	469	349	515	261	1961
Off-system	139	195	149	161	200	844
Total (Bridges)	506	664	498	676	461	2805





WYDOT Delayed Construction Projects

Project Number	Description	Cost	Notes/FAQs
I806212	I-80 / I-25 Interchange	\$310,000,000	Reconstruction
N432057	Wright to Gillette / WY 59	\$20,834,031	Widen to 5-Lanes and overlay
U212019	Cheyenne / College Drive / S Greeley to Fox Farm	\$18,684,126	Widen to 5-Lanes and overlay
I252171	I-25 / Wheatland to Glendo	\$7,386,482	Reconstruction
P242015	Shirley Rim to Casper / WY 487	\$15,157,455	Reconstruction
N342047	Waltman to Shoshoni / US 20/26	\$7,523,112	Passing Lane
N342048	Shoshoni to Thermopolis / US20 / WY 789	\$3,632,196	Passing Lane
1708012	Sheridan /Coffeen Ave	\$18,702,499	Widen to 5-Lanes and overlay



Grant Opportunities



WYDOT web page – Transportation Grant opportunities



Contains information on grants that can be applied for by local governments

- Competitive federal grants
 - Includes guidance documentation
- Zero emission vehicles
- Highway safety behavioral
- Aeronautics
- Local government transportation programs



Links to additional resources and guidebook on the new infrastructure law.



Next Steps

Local Governments



Contact WYDOT to learn about opportunities for:

- Funding
- Construction partnerships
- Supply purchases



Visit on-line STIP page



Provide feedback

- Upcoming projects
- Developments

Mark Ayen, District Engineer
(307) 473-3200 | Mark.Ayen@wyo.gov

Mark Gillett, Chief Engineer
(307) 777-4484 | Mark.Gillett@wyo.gov

Keith Fulton, Assistant Chief Engineer – Engineering and Planning
(307) 777-4484 | Keith.Fulton@wyo.gov

Tom DeHoff, Assistant Chief Engineer – Operations
(307) 777-4484 | Tom.Dehoff@wyo.gov

Sara B. Janes Ellis, Local Government Coordinator
(307) 777-4438 | Sara.Ellis@wyo.gov

John Davis, Management Services Manager – Grant information
(307) 777-4158 | John.Davis@wyo.gov



Next Steps



Visit on-line STIP page



Provide feedback

- On current and upcoming projects
- What are we missing - Safety, mobility, congestion, etc.
- What would you like to see in the STIP document?
- What is the best way to present information?

WYDOT is hosting a online web page to provide information on the Statewide Transportation Improvement Program (STIP)

See meeting schedules and presentations

Use the Interactive map to see projects and provide comments

The online meeting can be accessed at
<https://www.dot.state.wy.us/STIP>